




### Anti-Myelin PLP antibody ab28486

★★★★★ [13 Abreviews](#) [78 References](#) [2 图像](#)

#### 概述

产品名称	Anti-Myelin PLP抗体
描述	兔多克隆抗体to Myelin PLP
宿主	Rabbit
特异性	ab28486 recognises PLP
经测试应用	适用于: IHC-P
种属反应性	与反应: Mouse 预测可用于: Cow, Dog, Pig, Macaque monkey 
免疫原	Synthetic peptide: CG KGLSATVTGG QKGRGSRG , corresponding to amino acids 109-128 of Mouse Myelin PLP  <a href="#">Run BLAST with</a>  <a href="#">Run BLAST with</a>
常规说明	<p>The Life Science industry has been in the grips of a reproducibility crisis for a number of years. Abcam is leading the way in addressing this with our range of recombinant monoclonal antibodies and knockout edited cell lines for gold-standard validation. Please check that this product meets your needs before purchasing.</p> <p>If you have any questions, special requirements or concerns, please send us an inquiry and/or contact our Support team ahead of purchase. Recommended alternatives for this product can be found below, along with publications, customer reviews and Q&amp;As</p>

#### 性能

形式	Liquid
存放说明	Shipped at 4°C. Upon delivery aliquot and store at -20°C. Avoid freeze / thaw cycles.
存储溶液	Preservative: 0.05% Sodium azide Constituent: Whole serum
纯度	Whole antiserum
克隆	多克隆
同种型	IgG

**The Abpromise guarantee**      **Abpromise™**承诺保证使用ab28486于以下的经测试应用

“应用说明”部分 下显示的仅为推荐的起始稀释度;实际最佳的稀释度/浓度应由使用者检定。

应用	Ab评论	说明
IHC-P	★★★★★ (2)	Use at an assay dependent concentration.

**靶标**

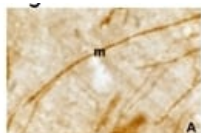
**功能**      This is the major myelin protein from the central nervous system. It plays an important role in the formation or maintenance of the multilamellar structure of myelin.

**疾病相关**      Defects in PLP1 are the cause of leukodystrophy hypomyelinating type 1 (HLD1) [MIM:312080]; also known as Pelizaeus-Merzbacher disease. HLD1 is an X-linked recessive dysmyelinating disorder of the central nervous system in which myelin is not formed properly. It is characterized clinically by nystagmus, spastic quadriplegia, ataxia, and developmental delay.  
Defects in PLP1 are the cause of spastic paraplegia X-linked type 2 (SPG2) [MIM:312920]. SPG2 is characterized by spastic gait and hyperreflexia. In some patients, complicating features include nystagmus, dysarthria, sensory disturbance, mental retardation, optic atrophy.

**序列相似性**      Belongs to the myelin proteolipid protein family.

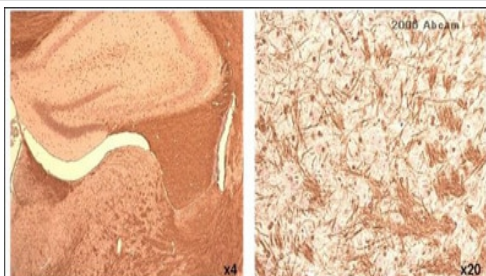
**细胞定位**      Membrane.

**图片**



Immunohistochemical staining of Myelin PLP in mouse brain thick section using ab28486 (1/1000 dilution). Staining (m) is limited to myelin tracts and oligodendrocytes.

Immunohistochemistry (Formalin/PFA-fixed paraffin-embedded sections) - Anti-Myelin PLP antibody (ab28486)



ab28486 at a 1/1000 dilution staining mouse brain (white matter) by IHC-P. The tissue was fixed in 10% formalin saline. Antigen retrieval was via hydrated autoclaving at 121°C for 15 minutes followed by 5 minutes in 98%formic acid. The antibody was incubated with the tissue for 16 hours and then bound antibody was detected using a biotinylated goat anti-rabbit IgG Fc.

Immunohistochemistry (Formalin/PFA-fixed paraffin-embedded sections) - Anti-Myelin PLP antibody (ab28486)

This image is courtesy of an anonymous Abreview

**Please note:** All products are "FOR RESEARCH USE ONLY. NOT FOR USE IN DIAGNOSTIC PROCEDURES"

### **Our Abpromise to you: Quality guaranteed and expert technical support**

---

- Replacement or refund for products not performing as stated on the datasheet
- Valid for 12 months from date of delivery
- Response to your inquiry within 24 hours
  
- We provide support in Chinese, English, French, German, Japanese and Spanish
- Extensive multi-media technical resources to help you
- We investigate all quality concerns to ensure our products perform to the highest standards

If the product does not perform as described on this datasheet, we will offer a refund or replacement. For full details of the Abpromise, please visit <https://www.abcam.cn/abpromise> or contact our technical team.

### **Terms and conditions**

---

- Guarantee only valid for products bought direct from Abcam or one of our authorized distributors