

### Anti-MX1 antibody [EPR19967] ab207414

**重组** RabMAb

#### 6 References 6 图像

#### 概述

产品名称	Anti-MX1抗体[EPR19967]
描述	兔单克隆抗体[EPR19967] to MX1
宿主	Rabbit
经测试应用	<b>适用于:</b> Flow Cyt (Intra), IP, ICC/IF, WB
种属反应性	<b>与反应:</b> Human
免疫原	Synthetic peptide. This information is proprietary to Abcam and/or its suppliers.
阳性对照	WB: Daudi treated with 20U/ml IFN alpha 1 for 24 hours whole cell lysate; Human spleen and tonsil lysates; Untreated Daudi (Human Burkitt's lymphoma lymphoblast) whole cell lysate ICC/IF: Daudi cells treated with 20U/ml IFN alpha 1 for 24 hours. IP: Daudi treated with 20 U/ml IFN alpha 1 for 24 hours whole cell lysate Flow Cyt (intra): Daudi cells
常规说明	<p>This product is a recombinant monoclonal antibody, which offers several advantages including:</p> <ul style="list-style-type: none"> <li>- High batch-to-batch consistency and reproducibility</li> <li>- Improved sensitivity and specificity</li> <li>- Long-term security of supply</li> <li>- Animal-free production</li> </ul> <p>For more information <a href="#">see here</a>.</p> <p>Our RabMAb<sup>®</sup> technology is a patented hybridoma-based technology for making rabbit monoclonal antibodies. For details on our patents, please refer to <a href="#">RabMAb<sup>®</sup> patents</a>.</p>

#### 性能

形式	Liquid
存放说明	Shipped at 4°C. Store at +4°C short term (1-2 weeks). Upon delivery aliquot. Store at -20°C long term. Avoid freeze / thaw cycle.
存储溶液	<p>pH: 7.2</p> <p>Preservative: 0.01% Sodium azide</p> <p>Constituents: 59% PBS, 40% Glycerol (glycerin, glycerine), 0.05% BSA</p>
纯度	Protein A purified
克隆	单克隆
克隆编号	EPR19967

同种型

lgG

应用

The Abpromise guarantee

Abpromise™承诺保证使用ab207414于以下的经测试应用

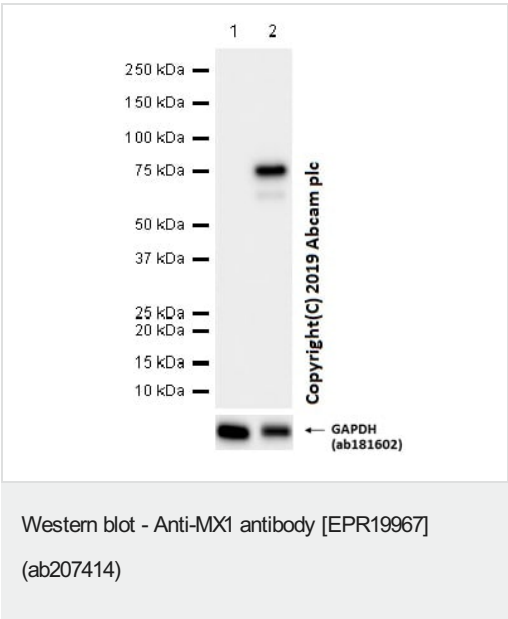
“应用说明”部分 下显示的仅为推荐的起始稀释度;实际最佳的稀释度/浓度应由使用者检定。

应用	Ab评论	说明
Flow Cyt (Intra)		1/500. <b>ab172730</b> - Rabbit monoclonal IgG, is suitable for use as an isotype control with this antibody.
IP		1/40 - 1/1000.
ICC/IF		1/250.
WB		1/1000 - 1/2000. Detects a band of approximately 76 kDa (predicted molecular weight: 76 kDa).

靶标

功能	May regulate the calcium channel activity of TRPCs. Shows activity against influenza virus and VSV, a rhabdovirus.
序列相似性	Belongs to the dynamin family. Contains 1 GED domain.
细胞定位	Cytoplasm.

图片



**All lanes** : Anti-MX1 antibody [EPR19967] (ab207414) at 1/2000 dilution

**Lane 1** : Untreated Daudi (Human Burkitt's lymphoma lymphoblast) whole cell lysate

**Lane 2** : Daudi (Human Burkitt's lymphoma lymphoblast) treated with 20 U/ml IFN alpha 1 for 24 hours whole cell lysate

Lysates/proteins at 20 µg per lane.

**Secondary**

**All lanes** : Goat Anti-Rabbit IgG H&L (HRP) (**ab97051**) at 1/100000 dilution (Goat Anti-Rabbit IgG, (H+L), Peroxidase conjugated)

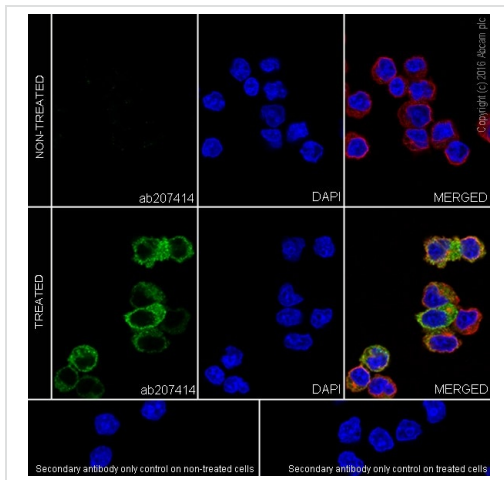
**Predicted band size:** 76 kDa

**Observed band size:** 76 kDa

Blocking buffer and concentration: 5% NFDM/TBST

Diluting buffer and concentration: 5% NFDM /TBST

Exposure time: 3.25 seconds

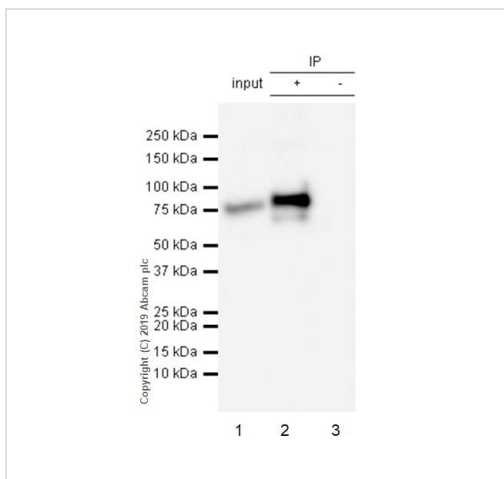


Immunocytochemistry/ Immunofluorescence - Anti-MX1 antibody [EPR19967] (ab207414)

Immunofluorescent analysis of 4% paraformaldehyde-fixed, 0.1% Triton X-100 permeabilized Daudi (Human Burkitt's lymphoma cell line) cells labeling MX1 with ab207414 at 1/250 dilution, followed by Goat Anti-Rabbit IgG H&L (Alexa Fluor® 488) ([ab150077](#)) secondary antibody at 1/1000 dilution (green). Confocal image showing negative staining on Daudi cell line. Expression was induced and showed cytoplasmic staining after cells were treated with IFN alpha 1 (20 U/ml) for 24h. The nuclear counterstain is DAPI (blue).

Tubulin is detected with Anti-alpha Tubulin antibody [DM1A] - Microtubule Marker (Alexa Fluor® 594) ([ab195889](#)) at 1/200 dilution (red).

Secondary antibody only control: Used PBS instead of primary antibody, secondary antibody is Goat Anti-Rabbit IgG H&L (Alexa Fluor® 488) ([ab150077](#)) secondary antibody at 1/1000 dilution.



Immunoprecipitation - Anti-MX1 antibody [EPR19967] (ab207414)

Blocking buffer and concentration: 5% NFDM/TBST

Diluting buffer and concentration: 5% NFDM/TBST

**All lanes :** Anti-MX1 antibody [EPR19967] (ab207414) at 1/1000 dilution

**Lanes 1-2 :** Daudi (Human Burkitt's lymphoma lymphoblast) treated with 20 U/ml IFN alpha 1 for 24 hours whole cell lysate

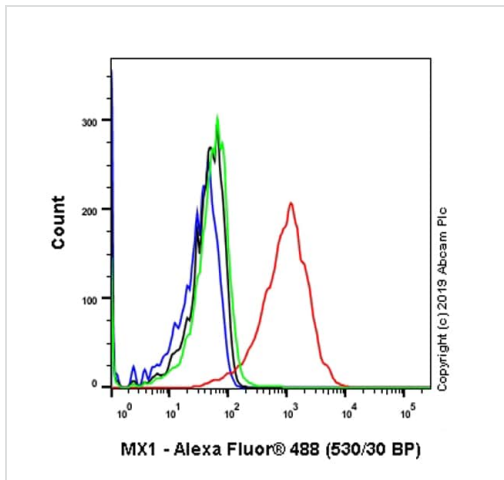
**Lane 3 :** Rabbit monoclonal IgG ([ab172730](#)) instead of ab207414 in Daudi treated with 20 U/ml IFN alpha 1 for 24 hours whole cell lysate

Lysates/proteins at 10 µg per lane.

### Secondary

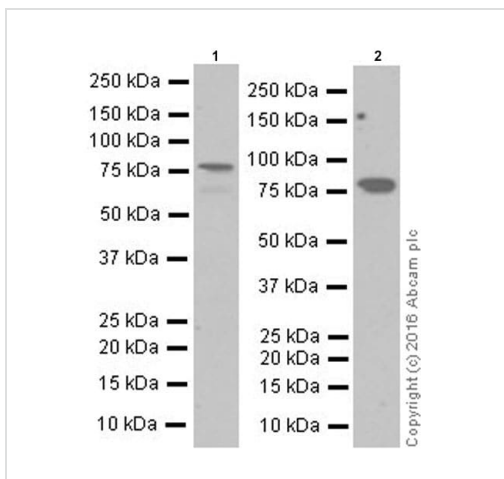
**All lanes :** VeriBlot for IP Detection Reagent (HRP) ([ab131366](#)) at 1/5000 dilution (VeriBlot for IP detection reagent (HRP))

**Observed band size:** 76 kDa



Flow Cytometry (Intracellular) - Anti-MX1 antibody  
[EPR19967] (ab207414)

Intracellular Flow Cytometry analysis of Daudi (Human Burkitt's lymphoma lymphoblast) treated with 20U/mL IFN alpha 1 for 24h cells labeling MX1 with purified ab207414 at 1/500 dilution (1µg/mL) (Red). Cells were fixed with 4% Paraformaldehyde and permeabilised with 90% Methanol. A Goat anti rabbit IgG (Alexa Fluor® 488, [ab150077](#)) secondary antibody was used at 1/2000. Isotype control - Rabbit monoclonal IgG (Black). Unlabeled control - Cells without incubation with primary antibody and secondary antibody (Blue). Untreated control (Green).



Western blot - Anti-MX1 antibody [EPR19967]  
(ab207414)

**All lanes :** Anti-MX1 antibody [EPR19967] (ab207414) at 1/1000 dilution

**Lane 1 :** Human spleen lysate

**Lane 2 :** Human tonsil lysate

Lysates/proteins at 10 µg per lane.

#### Secondary

**All lanes :** Goat Anti-Rabbit IgG Peroxidase Conjugate, specific to the non-reduced form of IgG at 1/1000 dilution

**Predicted band size:** 76 kDa

**Observed band size:** 76 kDa

Blocking/Dilution buffer: 5% NFDM/TBST.

Exposure time: Lane 1: 3 seconds; Lane 2: 1 minute.

### Why choose a recombinant antibody?



**Research with confidence**  
Consistent and reproducible results



**Long-term and scalable supply**  
Recombinant technology



**Success from the first experiment**  
Confirmed specificity



**Ethical standards compliant**  
Animal-free production

Anti-MX1 antibody [EPR19967] (ab207414)

**Please note:** All products are "FOR RESEARCH USE ONLY. NOT FOR USE IN DIAGNOSTIC PROCEDURES"

### Our Abpromise to you: Quality guaranteed and expert technical support

---

- Replacement or refund for products not performing as stated on the datasheet
- Valid for 12 months from date of delivery
- Response to your inquiry within 24 hours
- We provide support in Chinese, English, French, German, Japanese and Spanish
- Extensive multi-media technical resources to help you
- We investigate all quality concerns to ensure our products perform to the highest standards

If the product does not perform as described on this datasheet, we will offer a refund or replacement. For full details of the Abpromise, please visit <https://www.abcam.cn/abpromise> or contact our technical team.

### Terms and conditions

---

- Guarantee only valid for products bought direct from Abcam or one of our authorized distributors