

Anti-Mucin 5AC antibody [2-11M1] ab24071

24 References [1 图像](#)

概述

产品名称	Anti-Mucin 5AC抗体[2-11M1]
描述	小鼠单克隆抗体[2-11M1] to Mucin 5AC
宿主	Mouse
经测试应用	适用于: Flow Cyt
种属反应性	与反应: Human
免疫原	Mucin isolated from an ovarian cyst fluid (pure endocervical type according to the Fenoglio's classification) Human.

常规说明

This antibody reacts with peptide core of gastric mucin restricted to the surface gastric epithelium. It characterised the M1-b epitope, completely destroyed by b-mercapto-ethano. The M1-b epitope is found located on a 58 kD and 40 kD peptide after trypsin treatment of native M1 mucin. This M1-b epitope coprecipitates with the M1-f epitope encoded by Mucin 5AC gene. It is probably associated with the gastric mucin encoded by Mucin 5AC gene or with a gastric mucin encoded by another gastric MUC gene which polymerized with the M1/Mucin 5AC gastric mucin.

The Life Science industry has been in the grips of a reproducibility crisis for a number of years. Abcam is leading the way in addressing this with our range of recombinant monoclonal antibodies and knockout edited cell lines for gold-standard validation. Please check that this product meets your needs before purchasing.

If you have any questions, special requirements or concerns, please send us an inquiry and/or contact our Support team ahead of purchase. Recommended alternatives for this product can be found below, along with publications, customer reviews and Q&As

性能

形式	Liquid
存放说明	Shipped at 4°C. Store at +4°C short term (1-2 weeks). Upon delivery aliquot. Store at -20°C long term.
存储溶液	pH: 7.3 Preservative: 0.05% Sodium azide Constituent: PBS
纯度	Protein G purified

Primary antibody说明	This antibody reacts with peptide core of gastric mucin restricted to the surface gastric epithelium. It characterised the M1-b epitope, completely destroyed by b-mercapto-ethano. The M1-b epitope is found located on a 58 kD and 40 kD peptide after trypsin treatment of native M1 mucin. This M1-b epitope coprecipitates with the M1-f epitope encoded by Mucin 5AC gene. It is probably associated with the gastric mucin encoded by Mucin 5AC gene or with a gastric mucin encoded by another gastric MUC gene which polymerized with the M1/Mucin 5AC gastric mucin.
克隆	单克隆
克隆编号	2-11M1
骨髓瘤	Sp2/0
同种型	IgG1
轻链类型	kappa

应用

The Abpromise guarantee Abpromise™承诺保证使用ab24071于以下的经测试应用

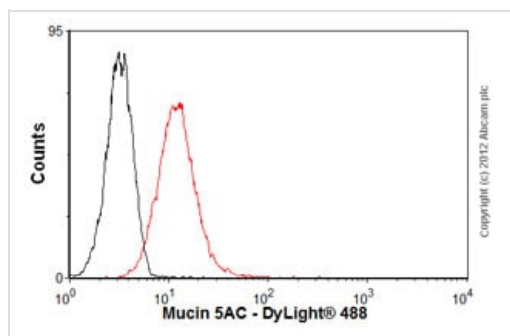
“应用说明”部分 下显示的仅为推荐的起始稀释度;实际最佳的稀释度/浓度应由使用者检定。

应用	Ab评论	说明
Flow Cyt		Use 2µg for 10 ⁶ cells. ab170190 - Mouse monoclonal IgG1, is suitable for use as an isotype control with this antibody.

靶标

功能	Gel-forming glycoprotein of gastric and respiratoy tract epithelia that protects the mucosa from infection and chemical damage by binding to inhaled microorganisms and particles that are subsequently removed by the mucociliary system.
组织特异性	Highly expressed in surface mucosal cells of respiratory tract and stomach epithelia. Overexpressed in a number of carcinomas. Also expressed in Barrett's esophagus epithelium and in the proximal duodenum.
序列相似性	Contains 1 CTCK (C-terminal cystine knot-like) domain. Contains 3 TIL (trypsin inhibitory-like) domains. Contains 4 VWFC domains. Contains 4 VWFD domains.
结构域	The cysteine residues in the Cys-rich subdomain repeats are not involved in disulfide bonding.
翻译后修饰	C-, O- and N-glycosylated. O-glycosylated on the Thr-/Ser-rich tandem repeats. C-mannosylation in the Cys-rich subdomains may be required for proper folding of these regions and for export from the endoplasmic reticulum during biosynthesis. Proteolytic cleavage in the C-terminal is initiated early in the secretory pathway and does not involve a serine protease. The extent of cleavage is increased in the acidic parts of the secretory pathway. Cleavage generates a reactive group which could link the protein to a primary amide.
细胞定位	Secreted.

图片



Flow Cytometry - Anti-Mucin 5AC antibody [2-11M1]
(ab24071)

Overlay histogram showing A549 cells stained with ab24071 (red line). The cells were fixed with 80% methanol (5 min) and then permeabilized with 0.1% PBS-Tween for 20 min. The cells were then incubated in 1x PBS / 10% normal goat serum / 0.3M glycine to block non-specific protein-protein interactions followed by the antibody (ab24071, 2µg/1x10⁶ cells) for 30 min at 22°C. The secondary antibody used was DyLight® 488 goat anti-mouse IgG (H+L) (**ab96879**) at 1/500 dilution for 30 min at 22°C. Isotype control antibody (black line) was mouse IgG1 [ICIGG1] (**ab91353**, 2µg/1x10⁶ cells) used under the same conditions. Acquisition of >5,000 events was performed.

Please note: All products are "FOR RESEARCH USE ONLY. NOT FOR USE IN DIAGNOSTIC PROCEDURES"

Our Abpromise to you: Quality guaranteed and expert technical support

- Replacement or refund for products not performing as stated on the datasheet
- Valid for 12 months from date of delivery
- Response to your inquiry within 24 hours
- We provide support in Chinese, English, French, German, Japanese and Spanish
- Extensive multi-media technical resources to help you
- We investigate all quality concerns to ensure our products perform to the highest standards

If the product does not perform as described on this datasheet, we will offer a refund or replacement. For full details of the Abpromise, please visit <https://www.abcam.cn/abpromise> or contact our technical team.

Terms and conditions

- Guarantee only valid for products bought direct from Abcam or one of our authorized distributors