

Anti-MTHFR antibody [EPR19781] ab203786

重组 RabMAb

5 References **9 图像**

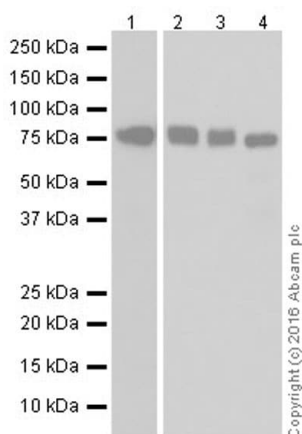
概述

产品名称	Anti-MTHFR抗体[EPR19781]
描述	兔单克隆抗体[EPR19781] to MTHFR
宿主	Rabbit
经测试应用	适用于: IHC-P, IP, ICC/IF, WB
种属反应性	与反应: Mouse, Human
免疫原	Recombinant fragment. This information is proprietary to Abcam and/or its suppliers.
阳性对照	WB: Human fetal brain, fetal heart, fetal kidney, spleen and fetal liver lysates; Jurkat, HT-29, HEK-293, RAW 264.7 and NIH/3T3 whole cell lysates; Mouse placenta and kidney lysates. ICC/IF: Jurkat and RAW 264.7 cells. IP: HT-29 whole cell lysate. IHC-P: Human thyroid carcinoma and kidney tissues.
常规说明	<p>This product is a recombinant monoclonal antibody, which offers several advantages including:</p> <ul style="list-style-type: none"> - High batch-to-batch consistency and reproducibility - Improved sensitivity and specificity - Long-term security of supply - Animal-free production <p>For more information see here.</p> <p>Our RabMAb[®] technology is a patented hybridoma-based technology for making rabbit monoclonal antibodies. For details on our patents, please refer to RabMAb[®] patents.</p>

性能

形式	Liquid
存放说明	Shipped at 4°C. Store at +4°C short term (1-2 weeks). Upon delivery aliquot. Store at -20°C long term. Avoid freeze / thaw cycle.
存储溶液	<p>pH: 7.2</p> <p>Preservative: 0.01% Sodium azide</p> <p>Constituents: 59% PBS, 40% Glycerol (glycerin, glycerine), 0.05% BSA</p>
纯度	Protein A purified
克隆	单克隆
克隆编号	EPR19781

同种型	IgG	
应用		
The Abpromise guarantee Abpromise™ 承诺保证使用ab203786于以下的经测试应用		
“应用说明”部分 下显示的仅为推荐的起始稀释度;实际最佳的稀释度/浓度应由使用者检定。		
应用	Ab评论	说明
IHC-P		Use at an assay dependent concentration. Perform heat mediated antigen retrieval with Tris/EDTA buffer pH 9.0 before commencing with IHC staining protocol.
IP		1/30. Note that mouse was not tested in IP but is predicted to react.
ICC/IF		1/100.
WB		1/1000. Detects a band of approximately 75 kDa (predicted molecular weight: 75 kDa).
靶标		
功能	Catalyzes the conversion of 5,10-methylenetetrahydrofolate to 5-methyltetrahydrofolate, a co-substrate for homocysteine remethylation to methionine.	
通路	One-carbon metabolism; tetrahydrofolate interconversion.	
疾病相关	<p>Defects in MTHFR are the cause of methylenetetrahydrofolate reductase deficiency (MTHFRD) [MIM:236250]. MTHFRD is autosomal recessive disorder with a wide range of features including homocysteinuria, homocysteinemia [MIM:603174], developmental delay, severe mental retardation, perinatal death, psychiatric disturbances, and later-onset neurodegenerative disorders.</p> <p>Defects in MTHFR may be a cause of susceptibility to ischemic stroke (ISCHSTR) [MIM:601367]; also known as cerebrovascular accident or cerebral infarction. A stroke is an acute neurologic event leading to death of neural tissue of the brain and resulting in loss of motor, sensory and/or cognitive function. Ischemic strokes, resulting from vascular occlusion, is considered to be a highly complex disease consisting of a group of heterogeneous disorders with multiple genetic and environmental risk factors.</p> <p>Defects in MTHFR may be a cause of susceptibility to folate-sensitive neural tube defects (folate-sensitive NTD) [MIM:601634]. The most common NTDs are open spina bifida (myelomeningocele) and anencephaly.</p>	
序列相似性	Belongs to the methylenetetrahydrofolate reductase family.	
图片		



Western blot - Anti-MTHFR antibody [EPR19781] (ab203786)

All lanes : Anti-MTHFR antibody [EPR19781] (ab203786) at 1/1000 dilution

Lane 1 : Human fetal brain lysate

Lane 2 : Human fetal heart lysate

Lane 3 : Human fetal kidney lysate

Lane 4 : Human spleen lysate

Lysates/proteins at 10 µg per lane.

Secondary

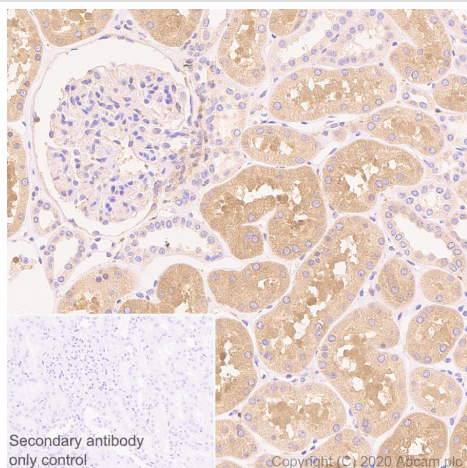
All lanes : Goat Anti-Rabbit IgG Peroxidase Conjugate, specific to the non-reduced form of IgG at 1/10000 dilution

Predicted band size: 75 kDa

Observed band size: 75 kDa

Blocking/Dilution buffer: 5% NFDm/TBST.

Exposure time: Lane 1: 3 minutes; Lane 2,3 and 4: 30 seconds.

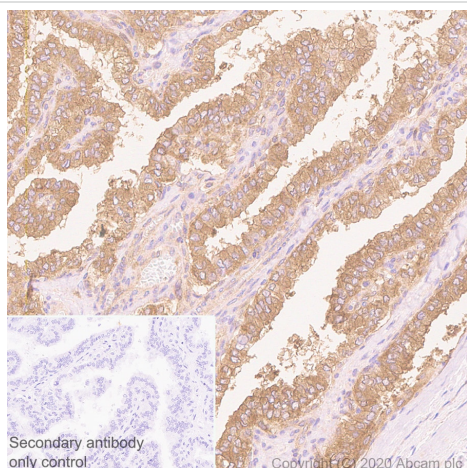


Immunohistochemistry (Formalin/PFA-fixed paraffin-embedded sections) - Anti-MTHFR antibody [EPR19781] (ab203786)

Immunohistochemical analysis of paraffin-embedded Human kidney tissue labeling MTHFR with ab203786 at 1/1000 (0.509 µg/mL) dilution followed by a ready to use Rabbit specific IHC polymer detection kit HRP/DAB (**ab209101**). Cytoplasmic staining on human kidney. The section was incubated with ab203786 for 30 minutes at room temperature. The immunostaining was performed on a Leica Biosystems BOND® RX instrument Counterstained with Hematoxylin.

Secondary antibody only control: Secondary antibody is a ready to use Rabbit specific IHC polymer detection kit HRP/DAB (**ab209101**).

Heat mediated antigen retrieval with Tris-EDTA buffer (pH 9.0, epitope retrieval solution) for 20 minutes.

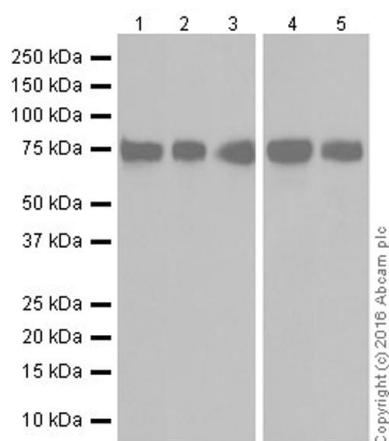


Immunohistochemistry (Formalin/PFA-fixed paraffin-embedded sections) - Anti-MTHFR antibody [EPR19781] (ab203786)

Immunohistochemical analysis of paraffin-embedded Human thyroid carcinoma tissue labeling MTHFR with ab203786 at 1/1000 (0.509 µg/mL) dilution followed by a ready to use Rabbit specific IHC polymer detection kit HRP/DAB (**ab209101**). Cytoplasmic staining on human thyroid carcinoma. The section was incubated with ab203786 for 30 minutes at room temperature. The immunostaining was performed on a Leica Biosystems BOND® RX instrument Counterstained with Hematoxylin.

Secondary antibody only control: Secondary antibody is a ready to use Rabbit specific IHC polymer detection kit HRP/DAB (**ab209101**).

Heat mediated antigen retrieval with Tris-EDTA buffer (pH 9.0, epitope retrieval solution) for 20 minutes.



Western blot - Anti-MTHFR antibody [EPR19781] (ab203786)

Lanes 1-3 : Anti-MTHFR antibody [EPR19781] (ab203786) at 1/1000 dilution

Lanes 4-5 : Anti-MTHFR antibody [EPR19781] (ab203786) at 1/5000 dilution

Lane 1 : Jurkat (Human T cell leukemia cell line from peripheral blood) whole cell lysate

Lane 2 : HT-29 (Human colorectal adenocarcinoma cell line) whole cell lysate

Lane 3 : Human fetal liver tissue lysate

Lane 4 : HEK-293 (Human epithelial cell line from embryonic kidney) whole cell lysate

Lane 5 : Mouse placenta tissue lysate

Lysates/proteins at 20 µg per lane.

Secondary

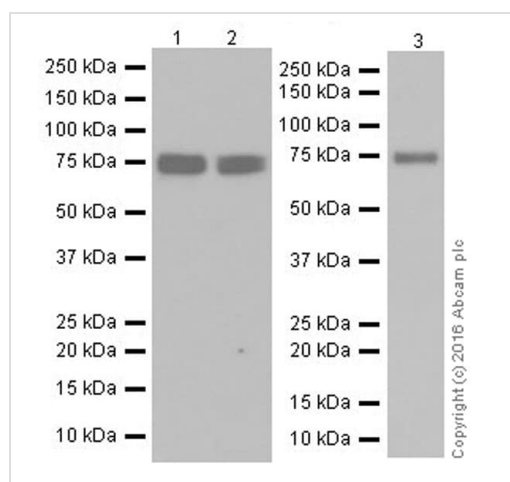
All lanes : Goat Anti-Rabbit IgG H&L (HRP) (**ab97051**) at 1/100000 dilution

Predicted band size: 75 kDa

Observed band size: 75 kDa

Exposure time: 3 minutes

Blocking/Dilution buffer: 5% NFDM/TBST.



Western blot - Anti-MTHFR antibody [EPR19781] (ab203786)

All lanes : Anti-MTHFR antibody [EPR19781] (ab203786) at 1/1000 dilution

Lane 1 : RAW 264.7 (Mouse macrophage cell line transformed with Abelson murine leukemia virus) whole cell lysate

Lane 2 : NIH/3T3 (Mouse embryonic fibroblast cell line) whole cell lysate

Lane 3 : Mouse kidney tissue lysate

Lysates/proteins at 20 µg per lane.

Secondary

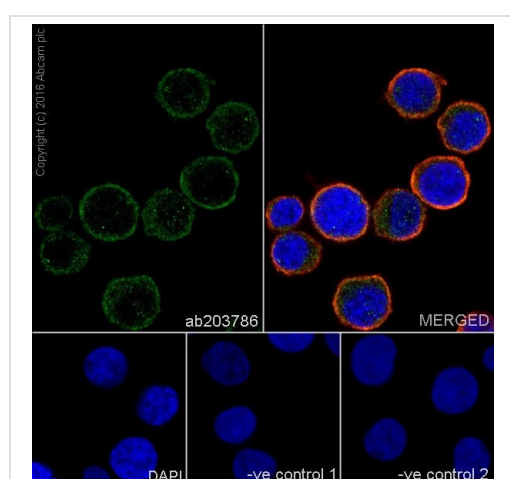
All lanes : Goat Anti-Rabbit IgG H&L (HRP) ([ab97051](#)) at 1/100000 dilution

Predicted band size: 75 kDa

Observed band size: 75 kDa

Exposure time: 3 minutes

Blocking/Dilution buffer: 5% NFDM/TBST.



Immunocytochemistry/ Immunofluorescence - Anti-MTHFR antibody [EPR19781] (ab203786)

Immunofluorescent analysis of 4% paraformaldehyde-fixed, 0.1% Triton X-100 permeabilized Jurkat (Human T cell leukemia cell line from peripheral blood) cells labeling MTHFR with ab203786 at 1/100 dilution, followed by Goat Anti-Rabbit IgG (Alexa Fluor® 488) ([ab150077](#)) secondary antibody at 1/1000 dilution (green).

Confocal image showing cytoplasmic staining on Jurkat cell line.

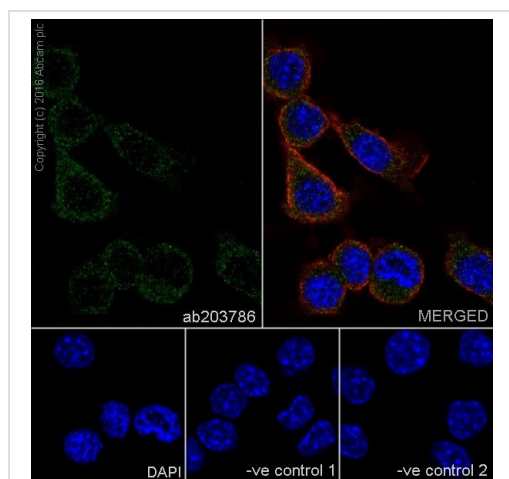
The nuclear counterstain is DAPI (blue).

Tubulin is detected with Anti-alpha Tubulin antibody [DM1A] - Loading Control ([ab7291](#)) at 1/1000 dilution and Goat Anti-Mouse IgG H&L (Alexa Fluor® 594) preadsorbed ([ab150120](#)) at 1/1000 dilution (red).

The negative controls are as follows:-

-ve control 1: ab203786 at 1/100 dilution followed by [ab150120](#) at 1/1000 dilution.

-ve control 2: **ab7291** at 1/1000 dilution followed by **ab150077** at 1/1000 dilution.



Immunocytochemistry/ Immunofluorescence - Anti-MTHFR antibody [EPR19781] (ab203786)

Immunofluorescent analysis of 4% paraformaldehyde-fixed, 0.1% Triton X-100 permeabilized RAW 264.7 (Mouse macrophage cell line transformed with Abelson murine leukemia virus) cells labeling MTHFR with ab203786 at 1/100 dilution, followed by Goat Anti-Rabbit IgG (Alexa Fluor® 488) (**ab150077**) secondary antibody at 1/1000 dilution (green).

Confocal image showing cytoplasmic staining on RAW 264.7 cell line.

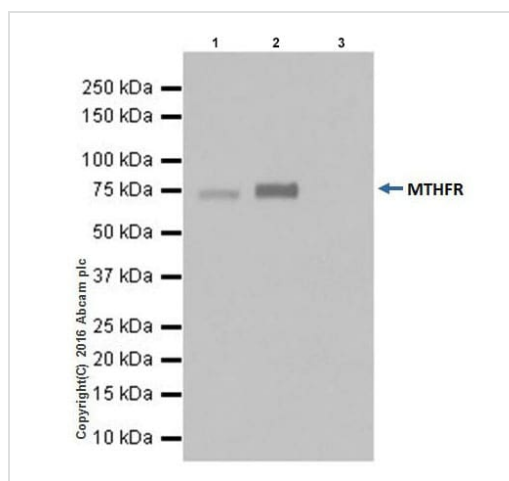
The nuclear counterstain is DAPI (blue).

Tubulin is detected with Anti-alpha Tubulin antibody [DM1A] - Loading Control (**ab7291**) at 1/1000 dilution and Goat Anti-Mouse IgG H&L (Alexa Fluor® 594) preadsorbed (**ab150120**) at 1/1000 dilution (red).

The negative controls are as follows:-

-ve control 1: ab203786 at 1/100 dilution followed by **ab150120** at 1/1000 dilution.

-ve control 2: **ab7291** at 1/1000 dilution followed by **ab150077** at 1/1000 dilution.



Immunoprecipitation - Anti-MTHFR antibody [EPR19781] (ab203786)

MTHFR was immunoprecipitated from 0.35mg of HT-29 (Human colorectal adenocarcinoma cell line) whole cell lysate with ab203786 at 1/30 dilution.

Western blot was performed from the immunoprecipitate using ab203786 at 1/500 dilution.

VeriBLOT for IP Detection Reagent (HRP) (**ab131366**), was used for detection at 1/1000 dilution.

Lane 1: HT-29 whole cell lysate, 10µg (Input).

Lane 2: ab203786 IP in HT-29 whole cell lysate.

Lane 3: Rabbit IgG, monoclonal [EPR25A] - Isotype Control (**ab172730**) instead of ab203786 in HT-29 whole cell lysate.

Blocking and dilution buffer and concentration: 5% NFDm/TBST.

Exposure time: 10 seconds.

Why choose a recombinant antibody?



Research with confidence
Consistent and reproducible results



Long-term and scalable supply
Recombinant technology



Success from the first experiment
Confirmed specificity



Ethical standards compliant
Animal-free production

Anti-MTHFR antibody [EPR19781] (ab203786)

Please note: All products are "FOR RESEARCH USE ONLY. NOT FOR USE IN DIAGNOSTIC PROCEDURES"

Our Abpromise to you: Quality guaranteed and expert technical support

- Replacement or refund for products not performing as stated on the datasheet
- Valid for 12 months from date of delivery
- Response to your inquiry within 24 hours
- We provide support in Chinese, English, French, German, Japanese and Spanish
- Extensive multi-media technical resources to help you
- We investigate all quality concerns to ensure our products perform to the highest standards

If the product does not perform as described on this datasheet, we will offer a refund or replacement. For full details of the Abpromise, please visit <https://www.abcam.cn/abpromise> or contact our technical team.

Terms and conditions

- Guarantee only valid for products bought direct from Abcam or one of our authorized distributors