

Anti-MTG16 antibody ab129444

[1 References](#) [2 图像](#)

概述

产品名称	Anti-MTG16抗体
描述	兔多克隆抗体to MTG16
宿主	Rabbit
经测试应用	适用于: WB, IP
种属反应性	与反应: Human 预测可用于: Chimpanzee, Gorilla, Orangutan 
免疫原	Synthetic peptide corresponding to Human MTG16 aa 603-653. Database link: NP_005178
阳性对照	Jurkat, 293T, HeLa whole cell lysate
常规说明	<p>The Life Science industry has been in the grips of a reproducibility crisis for a number of years. Abcam is leading the way in addressing this with our range of recombinant monoclonal antibodies and knockout edited cell lines for gold-standard validation. Please check that this product meets your needs before purchasing.</p> <p>If you have any questions, special requirements or concerns, please send us an inquiry and/or contact our Support team ahead of purchase. Recommended alternatives for this product can be found below, along with publications, customer reviews and Q&As</p>

性能

形式	Liquid
存放说明	Shipped at 4°C. Upon delivery aliquot and store at -20°C. Avoid freeze / thaw cycles.
存储溶液	pH: 7 Preservative: 0.09% Sodium azide Constituent: 99% Tris citrate/phosphate
纯度	pH: 7-8 Immunogen affinity purified
克隆	多克隆
同种型	IgG

应用

The Abpromise guarantee

Abpromise™ 承诺保证使用 ab129444 于以下的经测试应用

“应用说明”部分 下显示的仅为推荐的起始稀释度;实际最佳的稀释度/浓度应由使用者检定。

应用	Ab评论	说明
WB		1/2000 - 1/10000. Predicted molecular weight: 71 kDa.
IP		Use at 2-10 µg/mg of lysate.

靶标

功能

Functions as a transcriptional repressor. Regulates the proliferation and the differentiation of erythroid progenitors by repressing the expression of TAL1 target genes. Plays a role in granulocyte differentiation.

Isoform 2 functions as an A-kinase-anchoring protein.

组织特异性

Widely expressed with higher expression in heart, pancreas, skeletal muscle, spleen, thymus and peripheral blood leukocytes. Expressed in hematopoietic cells (at protein level).

疾病相关

Note=A chromosomal aberration involving CBFA2T3 is found in therapy-related myeloid malignancies. Translocation t(16;21)(q24;q22) that forms a RUNX1-CBFA2T3 fusion protein.

序列相似性

Belongs to the CBFA2T family.

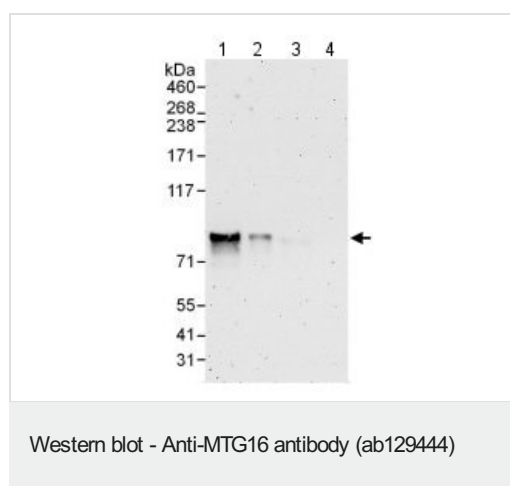
Contains 1 MYND-type zinc finger.

Contains 1 TAFH (NHR1) domain.

细胞定位

Nucleus > nucleolus. The RUNX1-CBFA2T3 fusion protein localizes to the nucleoplasm and Nucleus > nucleoplasm. Golgi apparatus membrane.

图片



All lanes : Anti-MTG16 antibody (ab129444) at 0.1 µg/ml

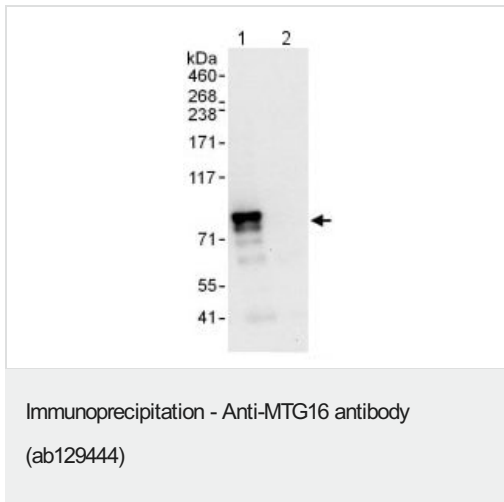
Lane 1 : Jurkat whole cell lysate at 50 µg

Lane 2 : Jurkat whole cell lysate at 15 µg

Lane 3 : 293T whole cell lysate at 50 µg

Lane 4 : HeLa whole cell lysate at 50 µg

Predicted band size: 71 kDa



Detection of MTG16 by Western Blot of Immunoprecipitate.

Lane 1: ab129444 at 1 μ g/ml staining MTG16 in HeLa whole cell lysate immunoprecipitated using ab129444 at 6 μ g/mg lysate (1 mg/IP; 20% of IP loaded/lane).

Lane 2: Control IgG

Detection: Chemiluminescence with exposure time of 10 seconds.

Please note: All products are "FOR RESEARCH USE ONLY. NOT FOR USE IN DIAGNOSTIC PROCEDURES"

Our Abpromise to you: Quality guaranteed and expert technical support

- Replacement or refund for products not performing as stated on the datasheet
- Valid for 12 months from date of delivery
- Response to your inquiry within 24 hours
- We provide support in Chinese, English, French, German, Japanese and Spanish
- Extensive multi-media technical resources to help you
- We investigate all quality concerns to ensure our products perform to the highest standards

If the product does not perform as described on this datasheet, we will offer a refund or replacement. For full details of the Abpromise, please visit <https://www.abcam.cn/abpromise> or contact our technical team.

Terms and conditions

- Guarantee only valid for products bought direct from Abcam or one of our authorized distributors