

Anti-MTA1 antibody ab226960

[1 References](#) [4 图像](#)

概述

产品名称	Anti-MTA1抗体
描述	兔多克隆抗体to MTA1
宿主	Rabbit
经测试应用	适用于: IHC-P, ICC/IF
种属反应性	与反应: Mouse, Rat, Human
阳性对照	IHC-P: Human breast carcinoma tissue; Mouse ovary tissue; Rat hind brain tissue. ICC/IF: A431 cells.
常规说明	<p>The Life Science industry has been in the grips of a reproducibility crisis for a number of years. Abcam is leading the way in addressing this with our range of recombinant monoclonal antibodies and knockout edited cell lines for gold-standard validation. Please check that this product meets your needs before purchasing.</p> <p>If you have any questions, special requirements or concerns, please send us an inquiry and/or contact our Support team ahead of purchase. Recommended alternatives for this product can be found below, along with publications, customer reviews and Q&As</p>

性能

形式	Liquid
存放说明	Shipped at 4°C. Store at +4°C short term (1-2 weeks). Upon delivery aliquot. Store at -20°C long term. Avoid freeze / thaw cycle.
存储溶液	pH: 7.00 Preservative: 0.01% Thimerosal (merthiolate) Constituents: 79.99% PBS, 20% Glycerol (glycerin, glycerine)
纯度	Immunogen affinity purified
克隆	多克隆

应用

The Abpromise guarantee **Abpromise™**承诺保证使用ab226960于以下的经测试应用

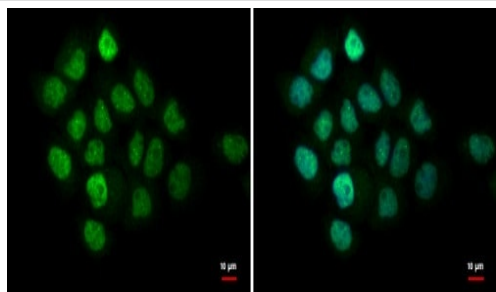
“应用说明”部分 下显示的仅为推荐的起始稀释度;实际最佳的稀释度/浓度应由使用者检定。

应用	Ab评论	说明
IHC-P		1/100 - 1/1000.
ICC/IF		1/100 - 1/1000.

靶标

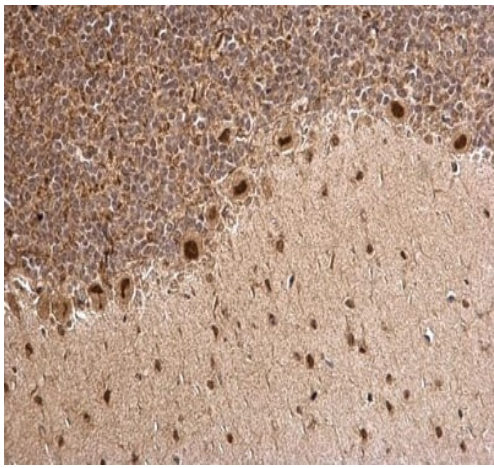
功能	May be involved in the regulation of gene expression by covalent modification of histone proteins. Isoform Long is a corepressor of estrogen receptor (ER). Isoform Short binds to ER and sequesters it in the cytoplasm and enhances non-genomic responses of ER.
组织特异性	Widely expressed. High expression in brain, ovaries, adrenal glands and virgin mammary glands. Higher in tumors than in adjacent normal tissue from the same individual.
序列相似性	Contains 1 BAH domain. Contains 1 ELM2 domain. Contains 1 GATA-type zinc finger. Contains 1 SANT domain.
发展阶段	Highly expressed in metastatic cells.
结构域	Isoform Short contains a Leu-Arg-Ile-Leu-Leu motif (ER binding motif).
细胞定位	Cytoplasm and Nucleus.

图片



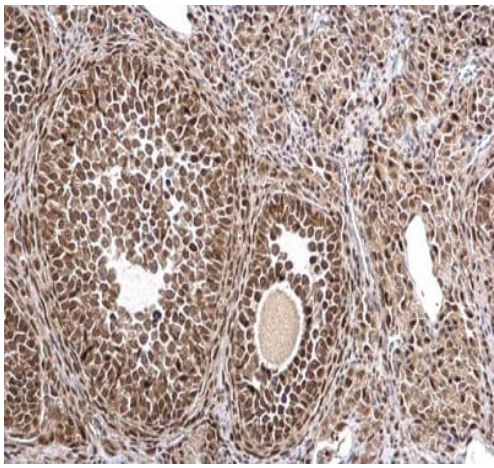
4% paraformaldehyde-fixed A431 (human epidermoid carcinoma cell line) cells stained for MTA1 (green) using ab226960 at 1/500 dilution in ICC/IF. Nuclear Counterstain: Hoechst 33342 (blue).

Immunocytochemistry/ Immunofluorescence - Anti-MTA1 antibody (ab226960)



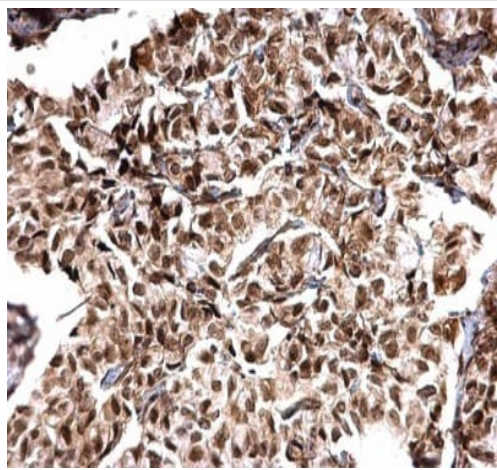
Paraffin-embedded rat hind brain tissue stained for MTA1 using ab226960 at 1/500 dilution in immunohistochemical analysis.

Immunohistochemistry (Formalin/PFA-fixed paraffin-embedded sections) - Anti-MTA1 antibody (ab226960)



Paraffin-embedded mouse ovary tissue stained for MTA1 using ab226960 at 1/500 dilution in immunohistochemical analysis.

Immunohistochemistry (Formalin/PFA-fixed paraffin-embedded sections) - Anti-MTA1 antibody (ab226960)



Paraffin-embedded human breast carcinoma tissue stained for MTA1 using ab226960 at 1/500 dilution in immunohistochemical analysis.

Immunohistochemistry (Formalin/PFA-fixed paraffin-embedded sections) - Anti-MTA1 antibody (ab226960)

Please note: All products are "FOR RESEARCH USE ONLY. NOT FOR USE IN DIAGNOSTIC PROCEDURES"

Our Abpromise to you: Quality guaranteed and expert technical support

- Replacement or refund for products not performing as stated on the datasheet
- Valid for 12 months from date of delivery
- Response to your inquiry within 24 hours
- We provide support in Chinese, English, French, German, Japanese and Spanish
- Extensive multi-media technical resources to help you
- We investigate all quality concerns to ensure our products perform to the highest standards

If the product does not perform as described on this datasheet, we will offer a refund or replacement. For full details of the Abpromise, please visit <https://www.abcam.cn/abpromise> or contact our technical team.

Terms and conditions

- Guarantee only valid for products bought direct from Abcam or one of our authorized distributors