

### Anti-MT-ND1 antibody [EPR13466(2)] ab181848

**重组** RabMAb

★★★★★ **3 Abreviews** **25 References** **3 图像**

#### 概述

产品名称	Anti-MT-ND1抗体[EPR13466(2)]
描述	兔单克隆抗体[EPR13466(2)] to MT-ND1
宿主	Rabbit
特异性	This antibody is unsuitable for detecting cell line samples.
经测试应用	<b>适用于:</b> WB
种属反应性	<b>与反应:</b> Mouse, Rat, Human
免疫原	Synthetic peptide. This information is proprietary to Abcam and/or its suppliers.
阳性对照	Human fetal heart and fetal muscle lysates.
常规说明	<p>This product is a recombinant monoclonal antibody, which offers several advantages including:</p> <ul style="list-style-type: none"> <li>- High batch-to-batch consistency and reproducibility</li> <li>- Improved sensitivity and specificity</li> <li>- Long-term security of supply</li> <li>- Animal-free production</li> </ul> <p>For more information <a href="#">see here</a>.</p> <p>Our RabMAb<sup>®</sup> technology is a patented hybridoma-based technology for making rabbit monoclonal antibodies. For details on our patents, please refer to <a href="#">RabMAb<sup>®</sup> patents</a>.</p>

#### 性能

形式	Liquid
存放说明	Shipped at 4°C. Store at +4°C short term (1-2 weeks). Upon delivery aliquot. Store at -20°C long term. Avoid freeze / thaw cycle.
存储溶液	<p>pH: 7.2</p> <p>Preservative: 0.01% Sodium azide</p> <p>Constituents: 40% Glycerol (glycerin, glycerine), 59% PBS, 0.21% BSA</p>
纯度	Protein A purified
克隆	单克隆
克隆编号	EPR13466(2)
同种型	IgG

## 应用

### The Abpromise guarantee

**Abpromise™**承诺保证使用ab181848于以下的经测试应用

“应用说明”部分 下显示的仅为推荐的起始稀释度;实际最佳的稀释度/浓度应由使用者检定。

应用	Ab评论	说明
WB	★★★★★ (3)	1/1000 - 1/20000. Detects a band of approximately 36 kDa (predicted molecular weight: 36 kDa). This antibody is unsuitable for detecting cell line samples.

## 靶标

### 功能

Core subunit of the mitochondrial membrane respiratory chain NADH dehydrogenase (Complex I) that is believed to belong to the minimal assembly required for catalysis. Complex I functions in the transfer of electrons from NADH to the respiratory chain. The immediate electron acceptor for the enzyme is believed to be ubiquinone.

### 疾病相关

Defects in MT-ND1 are a cause of Leber hereditary optic neuropathy (LHON) [MIM:535000]. LHON is a maternally inherited disease resulting in acute or subacute loss of central vision, due to optic nerve dysfunction. Cardiac conduction defects and neurological defects have also been described in some patients. LHON results from primary mitochondrial DNA mutations affecting the respiratory chain complexes.

Defects in MT-ND1 are a cause of mitochondrial encephalomyopathy with lactic acidosis and stroke-like episodes syndrome (MELAS) [MIM:540000]. MELAS is a genetically heterogenous disorder, characterized by episodic vomiting, seizures, and recurrent cerebral insults resembling strokes and causing hemiparesis, hemianopsia, or cortical blindness.

Defects in MT-ND1 may be associated with susceptibility to Alzheimer disease mitochondrial (AD-MT) [MIM:502500]. Alzheimer disease is a neurodegenerative disorder characterized by progressive dementia, loss of cognitive abilities, and deposition of fibrillar amyloid proteins as intraneuronal neurofibrillary tangles, extracellular amyloid plaques and vascular amyloid deposits. The major constituent of these plaques is the neurotoxic amyloid-beta-APP 40-42 peptide (s), derived proteolytically from the transmembrane precursor protein APP by sequential secretase processing. The cytotoxic C-terminal fragments (CTFs) and the caspase-cleaved products such as C31 derived from APP, are also implicated in neuronal death.

Defects in MT-ND1 may be associated with non-insulin-dependent diabetes mellitus (NIDDM).

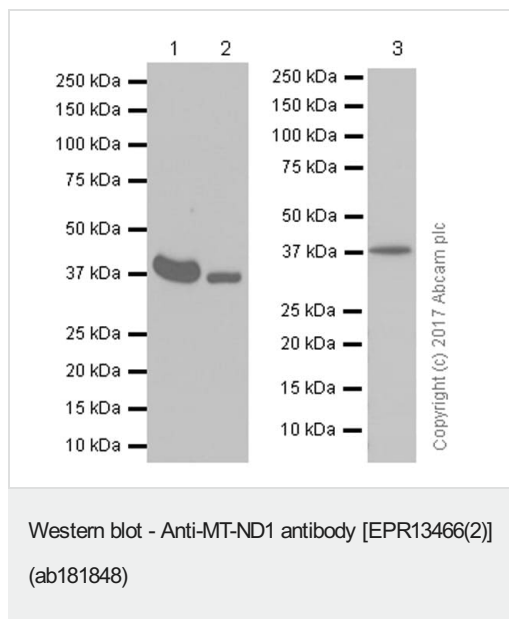
### 序列相似性

Belongs to the complex I subunit 1 family.

### 细胞定位

Mitochondrion inner membrane.

## 图片



**All lanes** : Anti-MT-ND1 antibody [EPR13466(2)] (ab181848) at 1/5000 dilution (purified)

**Lane 1** : Human heart lysates

**Lane 2** : Mouse heart lysates

**Lane 3** : Rat heart lysates

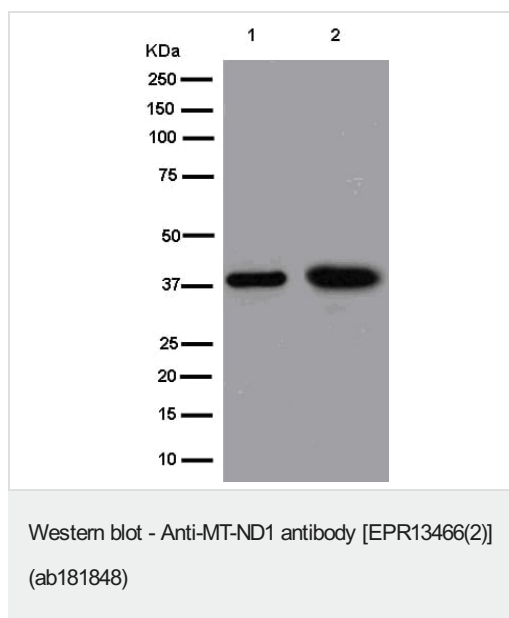
Lysates/proteins at 15 µg per lane.

### Secondary

**All lanes** : Goat Anti-Rabbit IgG H&L (HRP) ([ab97051](#)) at 1/20000 dilution

**Predicted band size:** 36 kDa

Blocking and diluting buffer: 5% NFDM/TBST



**All lanes** : Anti-MT-ND1 antibody [EPR13466(2)] (ab181848) at 1/20000 dilution (unpurified)

**Lane 1** : Human fetal heart lysate

**Lane 2** : Human fetal muscle lysate

Lysates/proteins at 20 µg per lane.

### Secondary

**All lanes** : Goat Anti-Rabbit IgG H&L (HRP) ([ab136636](#)) at 1/500 dilution

**Predicted band size:** 36 kDa

### Why choose a recombinant antibody?



**Research with confidence**  
Consistent and reproducible results



**Long-term and scalable supply**  
Recombinant technology



**Success from the first experiment**  
Confirmed specificity



**Ethical standards compliant**  
Animal-free production

Anti-MT-ND1 antibody [EPR13466(2)] (ab181848)

**Please note:** All products are "FOR RESEARCH USE ONLY. NOT FOR USE IN DIAGNOSTIC PROCEDURES"

### Our Abpromise to you: Quality guaranteed and expert technical support

---

- Replacement or refund for products not performing as stated on the datasheet
- Valid for 12 months from date of delivery
- Response to your inquiry within 24 hours
- We provide support in Chinese, English, French, German, Japanese and Spanish
- Extensive multi-media technical resources to help you
- We investigate all quality concerns to ensure our products perform to the highest standards

If the product does not perform as described on this datasheet, we will offer a refund or replacement. For full details of the Abpromise, please visit <https://www.abcam.cn/abpromise> or contact our technical team.

### Terms and conditions

---

- Guarantee only valid for products bought direct from Abcam or one of our authorized distributors