

### Anti-MRP2 antibody [EPR10998] ab172630

敲除验证
重组
RabMAb

[13 References](#)
[8 图像](#)

#### 概述

产品名称	Anti-MRP2抗体[EPR10998]
描述	兔单克隆抗体[EPR10998] to MRP2
宿主	Rabbit
经测试应用	<b>适用于:</b> WB, ICC/IF, Flow Cyt (Intra) <b>不适用于:</b> IHC-P or IP
种属反应性	<b>与反应:</b> Human
免疫原	Synthetic peptide. This information is proprietary to Abcam and/or its suppliers.
阳性对照	WB: Human fetal liver, HepG2 and A549 lysates. ICC/IF: HepG2 cells and A549 cells. Flow Cyt (intra): Permeabilized A549 cells.
常规说明	<p>This product is a recombinant monoclonal antibody, which offers several advantages including:</p> <ul style="list-style-type: none"> <li>- High batch-to-batch consistency and reproducibility</li> <li>- Improved sensitivity and specificity</li> <li>- Long-term security of supply</li> <li>- Animal-free production</li> </ul> <p>For more information <a href="#">see here</a>.</p> <p>Our RabMAb<sup>®</sup> technology is a patented hybridoma-based technology for making rabbit monoclonal antibodies. For details on our patents, please refer to <a href="#">RabMAb<sup>®</sup> patents</a>.</p> <p>Mouse, Rat: We have preliminary internal testing data to indicate this antibody may not react with these species. Please contact us for more information.</p>

#### 性能

形式	Liquid
存放说明	Shipped at 4°C. Store at +4°C short term (1-2 weeks). Upon delivery aliquot. Store at -20°C long term. Avoid freeze / thaw cycle.
存储溶液	Preservative: 0.01% Sodium azide Constituents: PBS, 0.05% BSA, 40% Glycerol
纯度	Protein A purified
克隆	单克隆

同种型 IgG

**Abpromise™** 承诺保证使用ab172630于以下的经测试应用

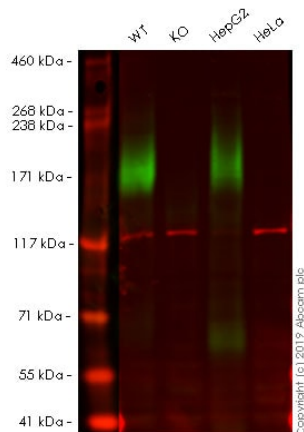
**“应用说明”部分 下显示的仅为推荐的起始稀释度;实际最佳的稀释度/浓度应由使用者检定。**

应用	Ab评论	说明
WB		1/1000 - 1/10000. Predicted molecular weight: 174 kDa.
ICC/IF		1/100. <b>For unpurified use at 1/250 - 1/500.</b>
Flow Cyt (Intra)		1/70. <b>ab172730</b> - Rabbit monoclonal IgG, is suitable for use as an isotype control with this antibody. For unpurified use at 1/100 - 1/500.

**应用说明** Is unsuitable for IHC-P or IP.

功能	Mediates hepatobiliary excretion of numerous organic anions. May function as a cellular cisplatin transporter.
组织特异性	Found on the apical membrane of polarized cells in liver, kidney and intestine. The highest expression is found in liver.
疾病相关	Defects in ABCC2 are the cause of Dubin-Johnson syndrome (DJS) [MIM:237500]. DJS is an autosomal recessive disorder characterized by conjugated hyperbilirubinemia, an increase in the urinary excretion of coproporphyrin isomer I, deposition of melanin-like pigment in hepatocytes, and prolonged retention of sulfobromophthalein, but otherwise normal liver function.
序列相似性	Belongs to the ABC transporter superfamily. ABCC family. Conjugate transporter (TC 3.A.1.208) subfamily. Contains 2 ABC transmembrane type-1 domains. Contains 2 ABC transporter domains.
细胞定位	Membrane.

## 2



Western blot - Anti-MRP2 antibody [EPR10998] (ab172630)

**All lanes :** Anti-MRP2 antibody [EPR10998] (ab172630) at 1/1000 dilution

**Lane 1 :** Wild-type A549 (Human lung carcinoma cell line) whole cell lysate

**Lane 2 :** ABCC2 knockout A549 (Human lung carcinoma cell line) whole cell lysate

**Lane 3 :** Hep G2 (Human liver hepatocellular carcinoma cell line) whole cell lysate

**Lane 4 :** HeLa (Human epithelial cell line from cervix adenocarcinoma) whole cell lysate

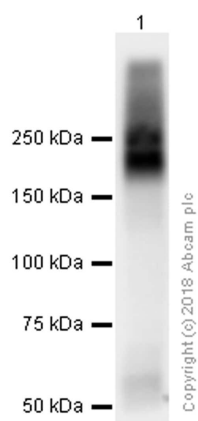
Lysates/proteins at 20 µg per lane.

Performed under reducing conditions.

**Predicted band size:** 174 kDa

**Lanes 1 -4:** Merged signal (red and green). Green - ab172630 observed at 210 kDa. Red - loading control, **ab130007**, observed at 130 kDa.

ab172630 was shown to recognize MRP2 in wild-type A549 cells as signal was lost at the expected MW in ABCC2 knockout cells. Additional cross-reactive bands were observed in the wild-type and knockout cells. Wild-type and ABCC2 knockout samples were subjected to SDS-PAGE. The membrane was blocked with 3% Milk. Ab172630 and **ab130007** (Mouse anti-Vinculin loading control) were incubated overnight at 4°C at 1/1000 dilution and 1/1000 dilution respectively. Blots were developed with Goat anti-Rabbit IgG H&L (IRDye® 800CW) preabsorbed **ab216773** and Goat anti-Mouse IgG H&L (IRDye® 680RD) preabsorbed **ab216776** secondary antibodies at 1/20000 dilution for 1 hour at room temperature before imaging.



Western blot - Anti-MRP2 antibody [EPR10998]  
(ab172630)

Anti-MRP2 antibody [EPR10998] (ab172630) at 1/2000 dilution  
(Purified) + HepG2 (Human hepatocellular carcinoma epithelial cell)  
whole cell lysate at 20 µg

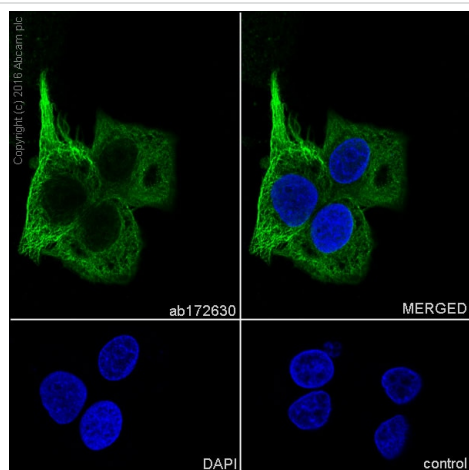
### Secondary

Goat Anti-Rabbit IgG H&L (HRP) ([ab97051](#)) at 1/20000 dilution

**Predicted band size:** 174 kDa

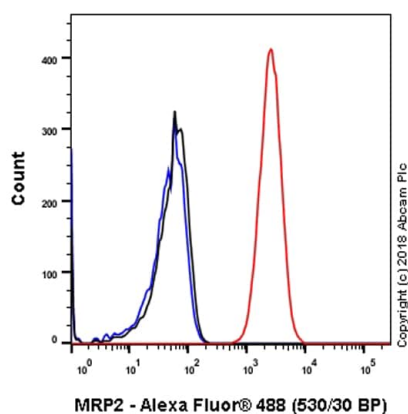
**Observed band size:** >190 kDa

The multiple bands are consistent with what has been described in  
PMID: 18832477



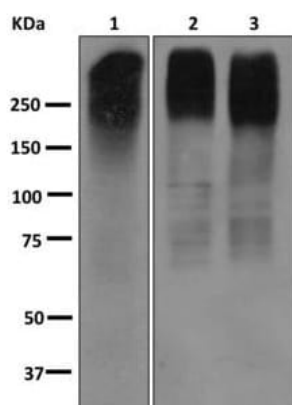
Immunocytochemistry/ Immunofluorescence - Anti-  
MRP2 antibody [EPR10998] (ab172630)

Immunocytochemistry/ Immunofluorescence analysis of HepG2  
(Human hepatocellular carcinoma epithelial cell) cells labeling  
MRP2 with purified ab172630 at 1:100 dilution (7.1 µg/ml). Cells  
were fixed in 4% Paraformaldehyde and permeabilized with 0.1%  
tritonX-100. Cells were counterstained with None. Goat anti rabbit  
IgG (Alexa Fluor® 488, [ab150077](#)) was used as the secondary  
antibody at 1:1000 (2 µg/ml) dilution. DAPI nuclear counterstain.  
PBS instead of the primary antibody was used as the secondary  
antibody only control.



Flow Cytometry (Intracellular) - Anti-MRP2 antibody  
[EPR10998] (ab172630)

Intracellular Flow Cytometry analysis of A549 (Human lung carcinoma epithelial cell) cells labeling MRP2 with purified ab172630 at 1/70 dilution (10 µg/ml) (red). Cells were fixed with 4% Paraformaldehyde. A Goat anti rabbit IgG (Alexa Fluor® 488, **ab150077**) secondary antibody was used at 1/2000. Isotype control - Rabbit monoclonal IgG (Black). Unlabeled control - Cell without incubation with primary antibody and secondary antibody (Blue).



Western blot - Anti-MRP2 antibody [EPR10998]  
(ab172630)

**All lanes** : Anti-MRP2 antibody [EPR10998] (ab172630) at 1/1000 dilution

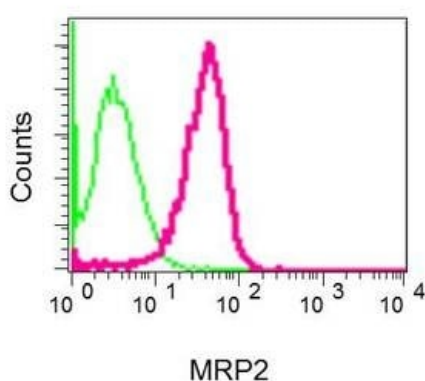
**Lane 1** : Human fetal liver lysate

**Lane 2** : HepG2 lysate

**Lane 3** : A549 lysate

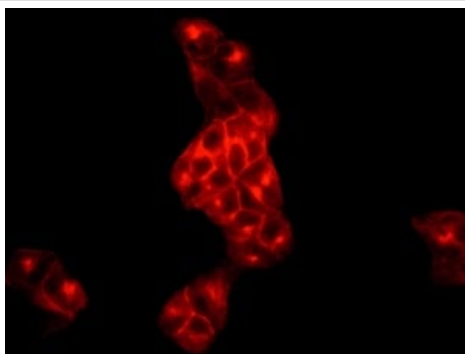
Lysates/proteins at 10 µg per lane.

**Predicted band size:** 174 kDa



Flow Cytometry (Intracellular) - Anti-MRP2 antibody  
[EPR10998] (ab172630)

Intracellular flow cytometric analysis of permeabilized A549 cells using ab172630 at a 1/100 dilution (red) or a rabbit IgG (negative) (green).



Immunocytochemistry/ Immunofluorescence analysis of A549 cells labeling MRP2 with ab172630 at a 1/250 dilution.

Immunocytochemistry/ Immunofluorescence - Anti-MRP2 antibody [EPR10998] (ab172630)

#### Why choose a recombinant antibody?



**Research with confidence**  
Consistent and reproducible results



**Long-term and scalable supply**  
Recombinant technology



**Success from the first experiment**  
Confirmed specificity



**Ethical standards compliant**  
Animal-free production

Anti-MRP2 antibody [EPR10998] (ab172630)

**Please note:** All products are "FOR RESEARCH USE ONLY. NOT FOR USE IN DIAGNOSTIC PROCEDURES"

#### Our Abpromise to you: Quality guaranteed and expert technical support

- Replacement or refund for products not performing as stated on the datasheet
- Valid for 12 months from date of delivery
- Response to your inquiry within 24 hours
- We provide support in Chinese, English, French, German, Japanese and Spanish
- Extensive multi-media technical resources to help you
- We investigate all quality concerns to ensure our products perform to the highest standards

If the product does not perform as described on this datasheet, we will offer a refund or replacement. For full details of the Abpromise, please visit <https://www.abcam.cn/abpromise> or contact our technical team.

#### Terms and conditions

- Guarantee only valid for products bought direct from Abcam or one of our authorized distributors