

Anti-MR1 antibody ab229987

[1 References](#) [4 图像](#)

概述

产品名称	Anti-MR1抗体
描述	兔多克隆抗体to MR1
宿主	Rabbit
经测试应用	适用于: IHC-P, WB, ICC/IF
种属反应性	与反应: Mouse, Human
免疫原	Recombinant fragment corresponding to Human MR1 aa 150-253. Database link: Q95460
阳性对照	WB: THP-1 and K562 whole cell lysates; Mouse brain lysate. IHC-P: Human liver and kidney tissues. ICC/IF: HepG2 cells.
常规说明	<p>The Life Science industry has been in the grips of a reproducibility crisis for a number of years. Abcam is leading the way in addressing this with our range of recombinant monoclonal antibodies and knockout edited cell lines for gold-standard validation. Please check that this product meets your needs before purchasing.</p> <p>If you have any questions, special requirements or concerns, please send us an inquiry and/or contact our Support team ahead of purchase. Recommended alternatives for this product can be found below, along with publications, customer reviews and Q&As</p>

性能

形式	Liquid
存放说明	Shipped at 4°C. Store at +4°C short term (1-2 weeks). Upon delivery aliquot. Store at -20°C long term. Avoid freeze / thaw cycle.
存储溶液	pH: 7.40 Preservative: 0.03% Proclin 300 Constituents: 50% Glycerol (glycerin, glycerine), PBS
纯度	Protein G purified
纯化说明	Purity >95%
克隆	多克隆
同种型	IgG

应用

The Abpromise guarantee **Abpromise™**承诺保证使用ab229987于以下的经测试应用

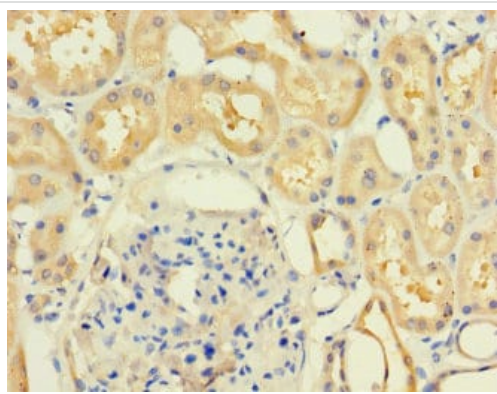
“应用说明”部分 下显示的仅为推荐的起始稀释度;实际最佳的稀释度/浓度应由使用者检定。

应用	Ab评论	说明
IHC-P		1/20 - 1/200.
WB		1/1000 - 1/5000. Predicted molecular weight: 39 kDa.
ICC/IF		1/50 - 1/200.

靶标

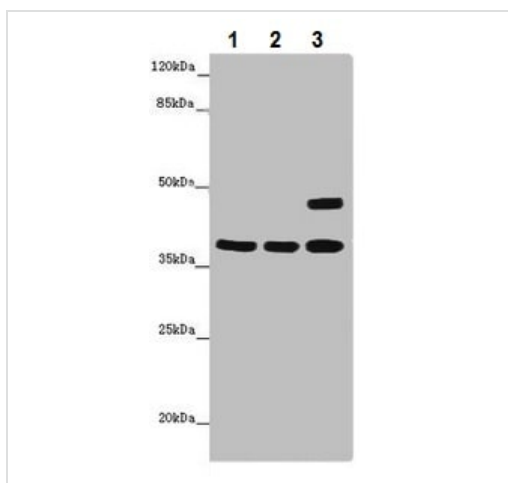
功能	Antigen-presenting molecule specialized in presenting microbial vitamin B metabolites. Involved in the development and expansion of a small population of T-cells expressing an invariant T-cell receptor alpha chain called mucosal-associated invariant T-cells (MAIT). MAIT lymphocytes are preferentially located in the gut lamina propria and therefore may be involved in monitoring commensal flora or serve as a distress signal. Expression and MAIT cell recognition seem to be ligand-dependent.
组织特异性	Ubiquitous.
序列相似性	Belongs to the MHC class I family. Contains 1 Ig-like C1-type (immunoglobulin-like) domain.
结构域	The alpha-3 region and to a lesser extent the transmembrane and cytosolic domains regulate surface expression. The alpha-3 region mediates interaction with B2M (PubMed:23051753). The ligand-binding groove is ideally suited to present small organic compounds that can originate from vitamins rather than antigenic peptides.
翻译后修饰	N-glycosylated.
细胞定位	Secreted; Cell membrane. Endoplasmic reticulum and Cell membrane. Endoplasmic reticulum membrane. The larger proportion remains in the ER in an immature state. The subset that reach cell surface does it through a B2M-independent pathway.

图片



Immunohistochemistry (Formalin/PFA-fixed paraffin-embedded sections) - Anti-MR1 antibody (ab229987)

Paraffin-embedded human kidney tissue stained for MR1 using ab229987 at 1/100 dilution in immunohistochemical analysis.



Western blot - Anti-MR1 antibody (ab229987)

All lanes : Anti-MR1 antibody (ab229987) at 1/1000 dilution

Lane 1 : THP-1 (Human monocytic leukemia cell line) whole cell lysate

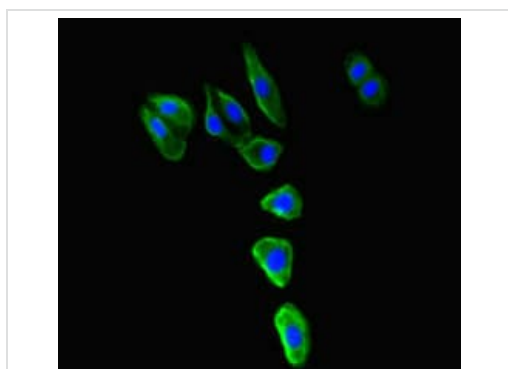
Lane 2 : K562 (Human chronic myelogenous leukemia cell line from bone marrow) whole cell lysate

Lane 3 : Mouse brain lysate

Secondary

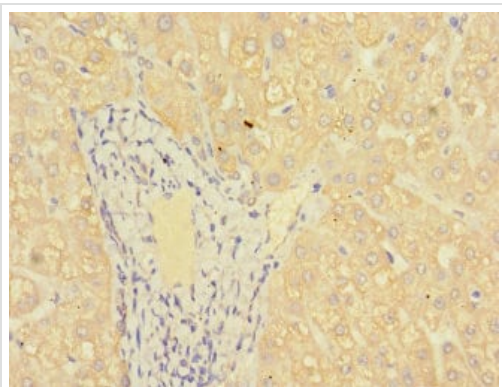
All lanes : Goat polyclonal to rabbit IgG at 1/10000 dilution

Predicted band size: 39 kDa



Immunocytochemistry/ Immunofluorescence - Anti-MR1 antibody (ab229987)

HepG2 (Human liver hepatocellular carcinoma cell line) cells stained for MR1 using ab229987 at 1/100 dilution in ICC/IF, followed by Alexa Fluor 488[®] conjugated Goat Anti-Rabbit IgG (H+L).



Paraffin-embedded human liver tissue stained for MR1 using ab229987 at 1/100 dilution in immunohistochemical analysis.

Immunohistochemistry (Formalin/PFA-fixed paraffin-embedded sections) - Anti-MR1 antibody (ab229987)

Please note: All products are "FOR RESEARCH USE ONLY. NOT FOR USE IN DIAGNOSTIC PROCEDURES"

Our Abpromise to you: Quality guaranteed and expert technical support

- Replacement or refund for products not performing as stated on the datasheet
- Valid for 12 months from date of delivery
- Response to your inquiry within 24 hours
- We provide support in Chinese, English, French, German, Japanese and Spanish
- Extensive multi-media technical resources to help you
- We investigate all quality concerns to ensure our products perform to the highest standards

If the product does not perform as described on this datasheet, we will offer a refund or replacement. For full details of the Abpromise, please visit <https://www.abcam.cn/abpromise> or contact our technical team.

Terms and conditions

- Guarantee only valid for products bought direct from Abcam or one of our authorized distributors