

### Anti-MLD antibody [EPR9680] ab185237

敲除验证
重组
RabMAb

★★★★☆
[3 Abreviews](#)
[3 References](#)
[4 图像](#)

#### 概述

产品名称	Anti-MLD抗体[EPR9680]
描述	兔单克隆抗体[EPR9680] to MLD
宿主	Rabbit
经测试应用	适用于: WB
种属反应性	与反应: Human
免疫原	Synthetic peptide. This information is proprietary to Abcam and/or its suppliers.
阳性对照	WB: HepG2, U87-MG, 293 and T47D cell lysates.
常规说明	<p>This product is a recombinant monoclonal antibody, which offers several advantages including:</p> <ul style="list-style-type: none"> <li>- High batch-to-batch consistency and reproducibility</li> <li>- Improved sensitivity and specificity</li> <li>- Long-term security of supply</li> <li>- Animal-free production</li> </ul> <p>For more information <a href="#">see here</a>.</p> <p>Our RabMAb<sup>®</sup> technology is a patented hybridoma-based technology for making rabbit monoclonal antibodies. For details on our patents, please refer to <a href="#">RabMAb<sup>®</sup> patents</a>.</p>

#### 性能

形式	Liquid
存放说明	Shipped at 4°C. Store at +4°C short term (1-2 weeks). Upon delivery aliquot. Store at -20°C long term. Avoid freeze / thaw cycle.
存储溶液	<p>pH: 7.2</p> <p>Preservative: 0.01% Sodium azide</p> <p>Constituents: 59% PBS, 40% Glycerol (glycerin, glycerine), 0.05% BSA</p>
纯度	Protein A purified
克隆	单克隆
克隆编号	EPR9680
同种型	IgG

应用

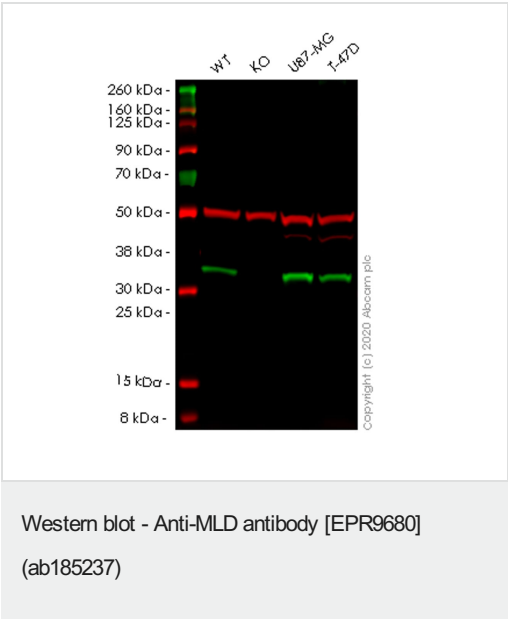
<b>The Abpromise guarantee</b> <b>Abpromise™</b> 承诺保证使用ab185237于以下的经测试应用		
“应用说明”部分 下显示的仅为推荐的起始稀释度;实际最佳的稀释度/浓度应由使用者检定。		
应用	Ab评论	说明
WB	★★★★★ (3)	1/1000 - 1/10000. Detects a band of approximately 34 kDa (predicted molecular weight: 38 kDa).

靶标

**相关性**      DEGS1 is a member of the membrane fatty acid desaturase family which is responsible for inserting double bonds into specific positions in fatty acids. It contains three His containing consensus motifs that are characteristic of a group of membrane fatty acid desaturases. It has sphingolipid-delta-4-desaturase activity and converts D-erythro-sphinganine to D-erythro-sphingosine (E-sphing-4-enine).

**细胞定位**      Endoplasmic reticulum and Mitochondrial

图片



**All lanes :** Anti-MLD antibody [EPR9680] (ab185237) at 1/1000 dilution

**Lane 1 :** Wild-type HEK-293T (Human epithelial cell line from embryonic kidney transformed with large T antigen) whole cell lysate

**Lane 2 :** DEGS1 knockout HEK-293T (Human epithelial cell line from embryonic kidney transformed with large T antigen) whole cell lysate

**Lane 3 :** U-87 MG (Human glioblastoma-astrocytoma epithelial cell line) whole cell lysate

**Lane 4 :** T-47D (Human ductal breast epithelial tumor cell line) whole cell lysate

Lysates/proteins at 20 µg per lane.

Secondary

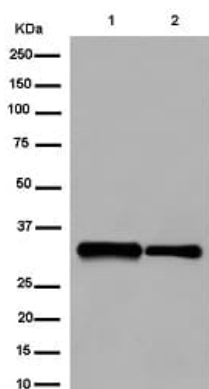
**All lanes :** Goat anti-Rabbit IgG H&L (IRDye® 800CW) preadsorbed (**ab216773**) at 1/10000 dilution

**Predicted band size:** 38 kDa

**Observed band size:** 38 kDa

**Lanes 1-4:** Merged signal (red and green). Green - ab185237 observed at 38 kDa. Red - loading control **ab8245** observed at 36 kDa.

ab185237 Anti-MLD antibody [EPR9680] was shown to specifically react with MLD in wild-type HEK-293T cells. Loss of signal was observed when knockout cell line **ab266481** (knockout cell lysate **ab257918**) was used. Wild-type and MLD knockout samples were subjected to SDS-PAGE. ab185237 and Anti-GAPDH antibody [6C5] - Loading Control (**ab8245**) were incubated overnight at 4°C at 1 in 1000 dilution and 1 in 20000 dilution respectively. Blots were developed with Goat anti-Rabbit IgG H&L (IRDye® 800CW) preadsorbed (**ab216773**) and Goat anti-Mouse IgG H&L (IRDye® 680RD) preadsorbed (**ab216776**) secondary antibodies at 1 in 20000 dilution for 1 hour at room temperature before imaging.



Western blot - Anti-MLD antibody [EPR9680]  
(ab185237)

**All lanes :** Anti-MLD antibody [EPR9680] (ab185237) at 1/10000 dilution

**Lane 1 :** U87-MG (Human glioblastoma-astrocytoma epithelial cell line) cell lysate

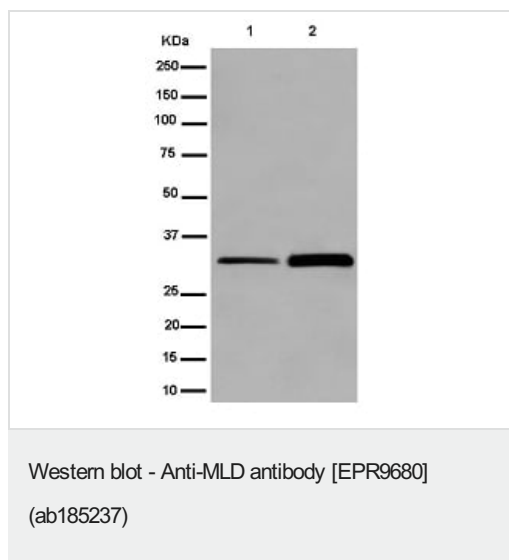
**Lane 2 :** HEK-293 (Human epithelial cell line from embryonic kidney) cell lysate

Lysates/proteins at 20 µg per lane.

### Secondary

**All lanes :** Goat Anti-Rabbit IgG, (H+L), Peroxidase conjugated at 1/1000 dilution

**Predicted band size:** 38 kDa



**All lanes :** Anti-MLD antibody [EPR9680] (ab185237) at 1/2000 dilution

**Lane 1 :** HepG2 cell lysate

**Lane 2 :** T47D cell lysate

Lysates/proteins at 20 µg per lane.

#### Secondary

**All lanes :** Goat Anti-Rabbit IgG, (H+L), Peroxidase conjugated at 1/1000 dilution

**Predicted band size:** 38 kDa

Why choose a recombinant antibody?

<p><b>Research with confidence</b> Consistent and reproducible results</p>	<p><b>Long-term and scalable supply</b> Recombinant technology</p>
<p><b>Success from the first experiment</b> Confirmed specificity</p>	<p><b>Ethical standards compliant</b> Animal-free production</p>

Anti-MLD antibody [EPR9680] (ab185237)

**Please note:** All products are "FOR RESEARCH USE ONLY. NOT FOR USE IN DIAGNOSTIC PROCEDURES"

#### Our Abpromise to you: Quality guaranteed and expert technical support

- Replacement or refund for products not performing as stated on the datasheet
- Valid for 12 months from date of delivery
- Response to your inquiry within 24 hours
- We provide support in Chinese, English, French, German, Japanese and Spanish
- Extensive multi-media technical resources to help you
- We investigate all quality concerns to ensure our products perform to the highest standards

If the product does not perform as described on this datasheet, we will offer a refund or replacement. For full details of the Abpromise, please visit <https://www.abcam.cn/abpromise> or contact our technical team.

## Terms and conditions

---

- Guarantee only valid for products bought direct from Abcam or one of our authorized distributors