


### Anti-MKK7 (phospho S271 + T275) antibody ab4762

★★★★★ [1 Abreviews](#) [2 References](#) [1 图像](#)

#### 概述

产品名称	Anti-MKK7 (phospho S271 + T275)抗体
描述	兔多克隆抗体to MKK7 (phospho S271 + T275)
宿主	Rabbit
特异性	This antibody does not react with other MEK isoforms.
经测试应用	适用于: WB
种属反应性	<p>预测可用于: Mouse </p>
免疫原	Synthetic peptide corresponding to Human MKK7 (phospho S271 + T275).
阳性对照	WB: Fusion protein expressing MEK 7.
常规说明	<p>The Life Science industry has been in the grips of a reproducibility crisis for a number of years. Abcam is leading the way in addressing this with our range of recombinant monoclonal antibodies and knockout edited cell lines for gold-standard validation. Please check that this product meets your needs before purchasing.</p> <p>If you have any questions, special requirements or concerns, please send us an inquiry and/or contact our Support team ahead of purchase. Recommended alternatives for this product can be found below, along with publications, customer reviews and Q&amp;As</p>

#### 性能

形式	Liquid
存放说明	Shipped at 4°C. Upon delivery aliquot and store at -20°C or -80°C. Avoid repeated freeze / thaw cycles.
存储溶液	<p>pH: 7.30</p> <p>Preservative: 0.05% Sodium azide</p> <p>Constituents: PBS, 0.1% BSA</p>
纯度	BSA is IgG and protease free
纯化说明	<p>Immunogen affinity purified</p> <p>Purified from rabbit serum by sequential epitope specific chromatography. The antibody has been negatively preadsorbed using a non-phosphopeptide corresponding to the site of phosphorylation to remove antibody that is reactive with non-phosphorylated MEK 7. The final product is</p>

generated by affinity chromatography using an MEK 7 derived peptide that is phosphorylated at serine 271 and threonine 275.

克隆 多克隆  
同种型 IgG

## 应用

**The Abpromise guarantee** **Abpromise™**承诺保证使用ab4762于以下的经测试应用

“应用说明”部分 下显示的仅为推荐的起始稀释度;实际最佳的稀释度/浓度应由使用者检定。

应用	Ab评论	说明
WB	★★★★★ (1)	Use a concentration of 0.1 - 1 µg/ml. Predicted molecular weight: 38 kDa.

## 靶标

**功能** Stress activated, dual specificity kinase that activates the JUN kinases MAPK8/JNK1, MAPK9/JNK2 and MAPK10/JNK3.

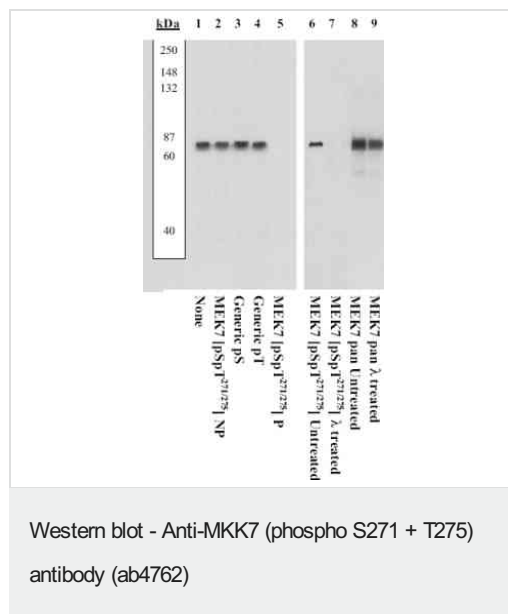
**组织特异性** Ubiquitous; with highest level of expression in skeletal muscle. Isoform 3 is found at low levels in placenta, fetal liver, and skeletal muscle.

**序列相似性** Belongs to the protein kinase superfamily. STE Ser/Thr protein kinase family. MAP kinase kinase subfamily.  
Contains 1 protein kinase domain.

**翻译后修饰** Activated by phosphorylation on Ser/Thr.

**细胞定位** Nucleus. Cytoplasm.

## 图片



Peptide Competition: Extracts prepared from background extracts with tagged fusion protein expressing MEK 7 added were resolved by SDS-PAGE on a 10% polyacrylamide gel and transferred to PVDF. Membranes were blocked with a 5% BSA-TBST buffer overnight at 4°C, then were incubated with 0.50 µg/mL ab4762 antibody for two hours at room temperature in a 3% BSA-TBST buffer, following prior incubation with: no peptide (1), the non-phosphopeptide corresponding to the

**Please note:** All products are "FOR RESEARCH USE ONLY. NOT FOR USE IN DIAGNOSTIC PROCEDURES"

### **Our Abpromise to you: Quality guaranteed and expert technical support**

---

- Replacement or refund for products not performing as stated on the datasheet
- Valid for 12 months from date of delivery
- Response to your inquiry within 24 hours
  
- We provide support in Chinese, English, French, German, Japanese and Spanish
- Extensive multi-media technical resources to help you
- We investigate all quality concerns to ensure our products perform to the highest standards

If the product does not perform as described on this datasheet, we will offer a refund or replacement. For full details of the Abpromise, please visit <https://www.abcam.cn/abpromise> or contact our technical team.

### **Terms and conditions**

---

- Guarantee only valid for products bought direct from Abcam or one of our authorized distributors