



Anti-Mitochondrial dicarboxylate carrier antibody ab32632

2 图像

概述

| | |
|-------|---|
| 产品名称 | Anti-Mitochondrial dicarboxylate carrier抗体 |
| 描述 | 兔多克隆抗体to Mitochondrial dicarboxylate carrier |
| 宿主 | Rabbit |
| 经测试应用 | 适用于: WB, ICC/IF |
| 种属反应性 | 与反应: Mouse |
| 免疫原 | Synthetic peptide: LRKHFGIKVP TT, corresponding to C terminal amino acids 276-287 of Mouse Mitochondrial dicarboxylate carrier, extracted from mouse fibroblast.  Run BLAST with ExPASy  Run BLAST with NCBI |
| 阳性对照 | WB: 3T3-L1 (Mouse embryonic fibroblast cell line) whole cell lysate differentiated to adipocytes ; Mouse white adipose ; Mouse Liver ; Mouse Kidney ICC/IF: C2C12 (Mouse myoblast cell line) whole cell lysate |
| 常规说明 | <p>The Life Science industry has been in the grips of a reproducibility crisis for a number of years. Abcam is leading the way in addressing this with our range of recombinant monoclonal antibodies and knockout edited cell lines for gold-standard validation. Please check that this product meets your needs before purchasing.</p> <p>If you have any questions, special requirements or concerns, please send us an inquiry and/or contact our Support team ahead of purchase. Recommended alternatives for this product can be found below, along with publications, customer reviews and Q&As</p> |

性能

| | |
|------|---|
| 形式 | Liquid |
| 存放说明 | Shipped at 4°C. Upon delivery aliquot and store at -20°C. Avoid freeze / thaw cycles. |
| 存储溶液 | Preservative: 0.05% Sodium azide Constituent: Whole serum |
| 纯度 | Whole antiserum |
| 克隆 | 多克隆 |
| 同种型 | IgG |

应用

The Abpromise guarantee **Abpromise™**承诺保证使用ab32632于以下的经测试应用

“应用说明”部分 下显示的仅为推荐的起始稀释度;实际最佳的稀释度/浓度应由使用者检定。

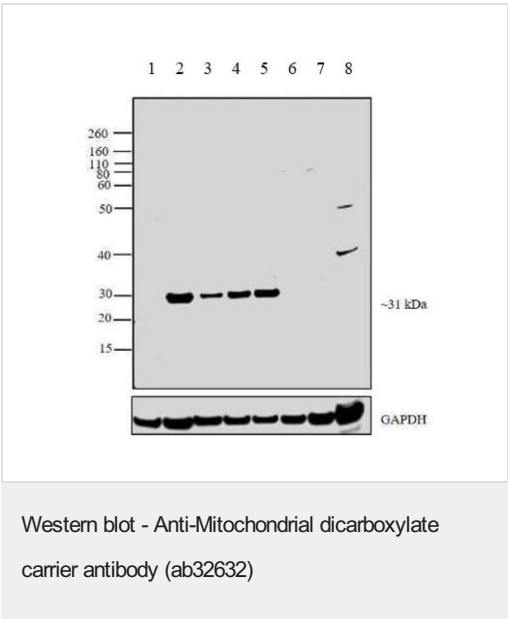
| 应用 | Ab评论 | 说明 |
|--------|------|--|
| WB | | 1/500. Predicted molecular weight: 31 kDa. |
| ICC/IF | | 1/50 - 1/500. |

靶标

相关性 The mitochondrial dicarboxylate carrier protein (mDIC) belongs to superfamily of mitochondrial transporters. It has been demonstrated that the expression of mDIC leads to hyperpolarization of the mitochondria, as well as succinate uptake by the mitochondria. It is highly expressed in adipose tissue, where its expression is downregulated by insulin and upregulated by free fatty acids. mDIC is also thought to play a role in glyceroneogenesis.

细胞定位 Mitochondrion; mitochondrial inner membrane; multi pass membrane protein.

图片



All lanes : Anti-Mitochondrial dicarboxylate carrier antibody (ab32632) at 1/500 dilution

Lane 1 : 3T3-L1 (Mouse embryonic fibroblast cell line) whole cell lysate

Lane 2 : 3T3-L1 (Mouse embryonic fibroblast cell line) whole cell lysate differentiated to adipocytes

Lane 3 : Mouse white adipose

Lane 4 : Mouse Liver

Lane 5 : Mouse Kidney

Lane 6 : Mouse Spleen

Lane 7 : Mouse Brain

Lane 8 : Mouse Skeletal Muscle

Lysates/proteins at 30 µg per lane.

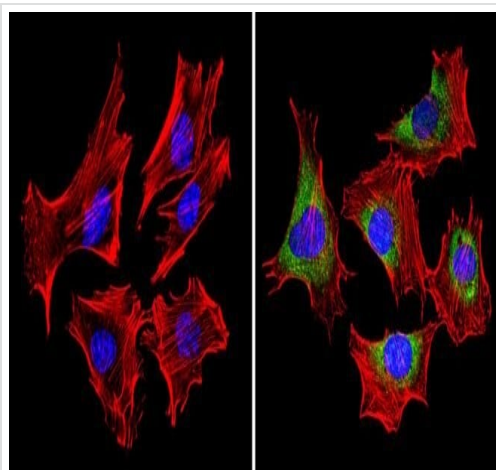
Secondary

All lanes : Goat anti-Rabbit IgG (H+L) Superclonal™ Secondary Antibody, HRP conjugate at 1/4000 dilution

Predicted band size: 31 kDa

Additional bands at: ~31 kDa. We are unsure as to the identity of these extra bands.

Antibody specificity demonstrated by detection of differential basal expression of the target across tissue models owing to their inherent genetic constitution. Mitochondrial dicarboxylate carrier was observed in Mouse White Adipose, Mouse Liver, Mouse Kidney compared to other tissue extracts tested and was also enhanced in 3T3-L1 (Mouse embryonic fibroblast cell line) whole cell lysate after differentiating it to adipocytes.



Immunocytochemistry/ Immunofluorescence - Anti-Mitochondrial dicarboxylate carrier antibody (ab32632)

Immunofluorescent analysis of Mitochondrial dicarboxylate carrier (Green) labeling C2C12 (Mouse myoblast cell line) whole cell lysate. The cells were formalin-fixed and permeabilized with 0.1% Triton™ X-100 in TBS for 5-10 minutes, and blocked with 3% BSA-PBS for 30 minutes at room temperature. The cells were labeled with ab32632 at a dilution of 1/100 in 3% BSA-PBS and incubated overnight at 4°C in a humidified chamber. Cells were washed with PBST and incubated with a DyLight-conjugated secondary antibody in PBS at room temperature in the dark. Nuclei (Blue) were stained with DAPI. F-actin (Red) was stained with Alexa Fluor® 554. Left image is a no primary antibody control. The images were captured at 60X magnification.

Please note: All products are "FOR RESEARCH USE ONLY. NOT FOR USE IN DIAGNOSTIC PROCEDURES"

Our Abpromise to you: Quality guaranteed and expert technical support

- Replacement or refund for products not performing as stated on the datasheet
- Valid for 12 months from date of delivery
- Response to your inquiry within 24 hours
- We provide support in Chinese, English, French, German, Japanese and Spanish
- Extensive multi-media technical resources to help you
- We investigate all quality concerns to ensure our products perform to the highest standards

If the product does not perform as described on this datasheet, we will offer a refund or replacement. For full details of the Abpromise, please visit <https://www.abcam.cn/abpromise> or contact our technical team.

Terms and conditions

- Guarantee only valid for products bought direct from Abcam or one of our authorized distributors