




Anti-Mitochondrial dicarboxylate carrier antibody ab214205

1 图像

概述

产品名称	Anti-Mitochondrial dicarboxylate carrier抗体
描述	兔多克隆抗体to Mitochondrial dicarboxylate carrier
宿主	Rabbit
经测试应用	适用于: IHC-P
种属反应性	与反应: Human 预测可用于: Mouse, Rat 
免疫原	Synthetic peptide within Human Mitochondrial dicarboxylate carrier aa 200 to the C-terminus conjugated to keyhole limpet haemocyanin. The exact immunogen sequence used to generate this antibody is proprietary information. If additional detail on the immunogen is needed to determine the suitability of the antibody for your needs, please <u>contact</u> our Scientific Support team to discuss your requirements. Database link: Q9UBX3
阳性对照	Human gastric carcinoma and kidney tissues.
常规说明	<div> <div>  Run BLAST with </div> <div>  Run BLAST with </div> </div> <p>The Life Science industry has been in the grips of a reproducibility crisis for a number of years. Abcam is leading the way in addressing this with our range of recombinant monoclonal antibodies and knockout edited cell lines for gold-standard validation. Please check that this product meets your needs before purchasing.</p> <p>If you have any questions, special requirements or concerns, please send us an inquiry and/or contact our Support team ahead of purchase. Recommended alternatives for this product can be found below, along with publications, customer reviews and Q&As</p>

性能

形式	Liquid
存放说明	Shipped at 4°C. Store at +4°C short term (1-2 weeks). Upon delivery aliquot. Store at -20°C long term. Avoid freeze / thaw cycle.
存储溶液	pH: 7.40 Preservative: 0.02% Proclin 300 Constituents: 50% Glycerol (glycerin, glycerine), 1% BSA, 48.98% TBS, 1X
纯度	Protein A purified

克隆

多克隆

同种型

IgG

应用

The Abpromise guarantee

Abpromise™承诺保证使用ab214205于以下的经测试应用

“应用说明”部分 下显示的仅为推荐的起始稀释度;实际最佳的稀释度/浓度应由使用者检定。

应用	Ab评论	说明
IHC-P		1/100 - 1/500. Perform heat mediated antigen retrieval with citrate buffer pH 6 before commencing with IHC staining protocol. When using a fluorescent probe the recommended dilution is 1/50 – 1/200.

靶标

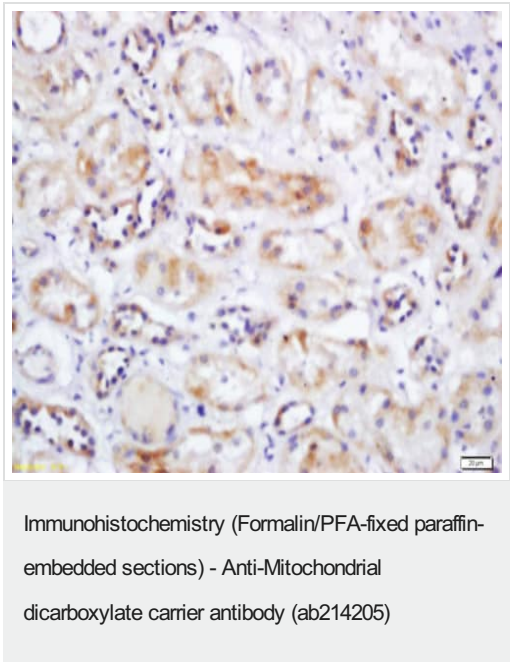
相关性

The mitochondrial dicarboxylate carrier protein (mDIC) belongs to superfamily of mitochondrial transporters. It has been demonstrated that the expression of mDIC leads to hyperpolarization of the mitochondria, as well as succinate uptake by the mitochondria. It is highly expressed in adipose tissue, where its expression is downregulated by insulin and upregulated by free fatty acids. mDIC is also thought to play a role in glyceroneogenesis.

细胞定位

Mitochondrion; mitochondrial inner membrane; multi pass membrane protein.

图片



Immunohistochemical analysis of formalin-fixed, paraffin-embedded Human kidney tissue labeling Mitochondrial dicarboxylate carrier with ab214205 at 1/200 dilution followed by conjugation to the secondary antibody and DAB staining.

Please note: All products are "FOR RESEARCH USE ONLY. NOT FOR USE IN DIAGNOSTIC PROCEDURES"

Our Abpromise to you: Quality guaranteed and expert technical support

- Replacement or refund for products not performing as stated on the datasheet
- Valid for 12 months from date of delivery
- Response to your inquiry within 24 hours

- We provide support in Chinese, English, French, German, Japanese and Spanish
- Extensive multi-media technical resources to help you
- We investigate all quality concerns to ensure our products perform to the highest standards

If the product does not perform as described on this datasheet, we will offer a refund or replacement. For full details of the Abpromise, please visit <https://www.abcam.cn/abpromise> or contact our technical team.

Terms and conditions

- Guarantee only valid for products bought direct from Abcam or one of our authorized distributors