


Anti-MIS12 antibody ab70843

★★★★★ [2 Abreviews](#) [7 References](#) [3 图像](#)

概述

产品名称	Anti-MIS12抗体
描述	兔多克隆抗体to MIS12
宿主	Rabbit
经测试应用	适用于: IP, IHC-P, WB
种属反应性	与反应: Human 预测可用于: Chimpanzee, Gorilla, Orangutan, Bat 
免疫原	Synthetic peptide corresponding to Human MIS12 (C terminal). Database link: Q9H081
常规说明	<p>The Life Science industry has been in the grips of a reproducibility crisis for a number of years. Abcam is leading the way in addressing this with our range of recombinant monoclonal antibodies and knockout edited cell lines for gold-standard validation. Please check that this product meets your needs before purchasing.</p> <p>If you have any questions, special requirements or concerns, please send us an inquiry and/or contact our Support team ahead of purchase. Recommended alternatives for this product can be found below, along with publications, customer reviews and Q&As</p>

性能

形式	Liquid
存放说明	Shipped at 4°C. Upon delivery aliquot and store at -20°C. Avoid freeze / thaw cycles.
存储溶液	pH: 7 Preservative: 0.09% Sodium azide Constituents: 1.815% Tris, 1.764% Sodium citrate, 0.021% PBS
纯度	Immunogen affinity purified
克隆	多克隆
同种型	IgG

应用

The Abpromise guarantee

Abpromise™ 承诺保证使用ab70843于以下的经测试应用

“应用说明”部分 下显示的仅为推荐的起始稀释度;实际最佳的稀释度/浓度应由使用者检定。

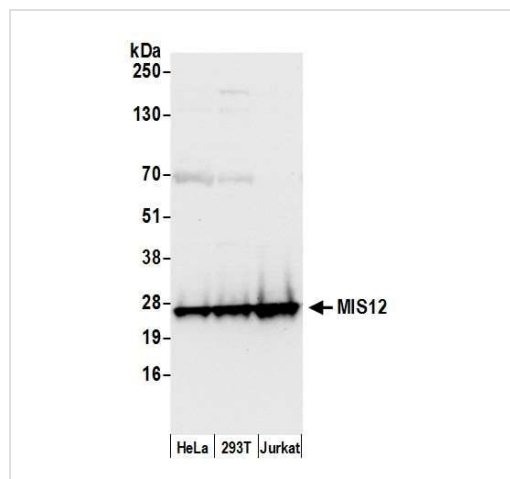
应用	Ab评论	说明
IP		Use at 2-5 - 5 µg/mg of lysate.
IHC-P		1/5000. Perform heat mediated antigen retrieval with Tris/EDTA buffer pH 9.0 before commencing with IHC staining protocol.
WB		Use a concentration of 0.1 µg/ml. Detects a band of approximately 34 kDa (predicted molecular weight: 24 kDa).

靶标

相关性 MIS12 is part of a complex that plays an essential role in chromosome segregation in vertebrates and contributes to mitotic kinetochore assembly.

细胞定位 Nucleus. Associated with the kinetochore.

图片



Western blot - Anti-MIS12 antibody (ab70843)

All lanes : Anti-MIS12 antibody (ab70843) at 0.1 µg/ml

Lane 1 : HeLa whole cell lysate

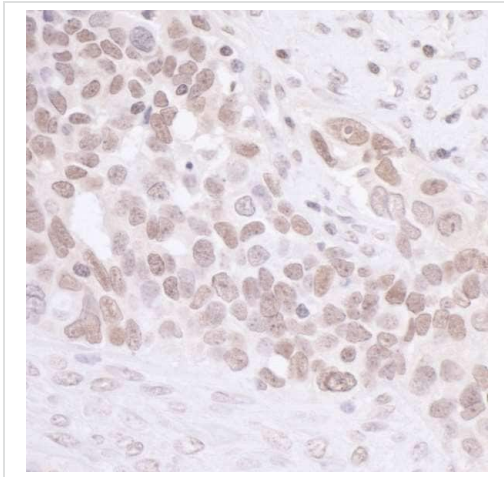
Lane 2 : HEK293T whole cell lysate

Lane 3 : Jurkat whole cell lysate

Lysates/proteins at 50 µg per lane.

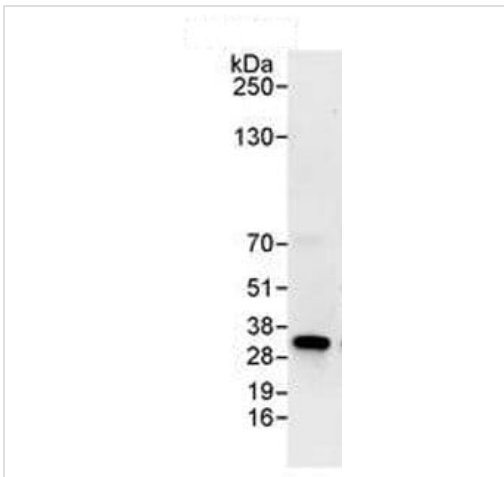
Predicted band size: 24 kDa

Detection: Chemiluminescence with an exposure time of 10 seconds



Immunohistochemistry (Formalin/PFA-fixed paraffin-embedded sections) analysis of human ovarian carcinoma tissue labelling MIS12 with ab70843 at 1/5000 (1 μ g/ml). Detection: DAB.

Immunohistochemistry (Formalin/PFA-fixed paraffin-embedded sections) - Anti-MIS12 antibody (ab70843)



HeLa whole cell lysate (at 1 mg for IP, 20% of IP loaded) with ab70843 at 1 μ g/ml for WB, subsequent to being used for IP at 3 μ g/mg lysate.
Detection: Chemiluminescence with an exposure time of 30 seconds.

Immunoprecipitation - Anti-MIS12 antibody (ab70843)

Please note: All products are "FOR RESEARCH USE ONLY. NOT FOR USE IN DIAGNOSTIC PROCEDURES"

Our Abpromise to you: Quality guaranteed and expert technical support

- Replacement or refund for products not performing as stated on the datasheet
- Valid for 12 months from date of delivery
- Response to your inquiry within 24 hours

- We provide support in Chinese, English, French, German, Japanese and Spanish
- Extensive multi-media technical resources to help you
- We investigate all quality concerns to ensure our products perform to the highest standards

If the product does not perform as described on this datasheet, we will offer a refund or replacement. For full details of the Abpromise, please visit <https://www.abcam.cn/abpromise> or contact our technical team.

Terms and conditions

- Guarantee only valid for products bought direct from Abcam or one of our authorized distributors