

# Anti-Milk Fat Globule 1 antibody [SPM291] ab17787

★★★★★ [1 Abreviews](#) [6 References](#) [4 图像](#)

### 概述

产品名称	Anti-Milk Fat Globule 1抗体[SPM291]
描述	小鼠单克隆抗体[SPM291] to Milk Fat Globule 1
宿主	Mouse
经测试应用	适用于: IHC-P
种属反应性	与反应: Human
免疫原	The details of the immunogen for this antibody are not available.
阳性对照	IHC: Human breast carcinoma, renal cell carcinoma, pancreas and lung carcinoma tissue
常规说明	<p>The Life Science industry has been in the grips of a reproducibility crisis for a number of years. Abcam is leading the way in addressing this with our range of recombinant monoclonal antibodies and knockout edited cell lines for gold-standard validation. Please check that this product meets your needs before purchasing.</p> <p>If you have any questions, special requirements or concerns, please send us an inquiry and/or contact our Support team ahead of purchase. Recommended alternatives for this product can be found below, along with publications, customer reviews and Q&amp;As</p>

### 性能

形式	Liquid
存放说明	Shipped at 4°C. Upon delivery aliquot and store at -20°C. Avoid freeze / thaw cycles.
存储溶液	<p>pH: 7.2</p> <p>Preservative: 0.09% Sodium azide</p> <p>Constituents: 0.0268% PBS, BSA</p>
纯度	Protein G purified
克隆	单克隆
克隆编号	SPM291
同种型	IgG1
轻链类型	kappa

### 应用

## The Abpromise guarantee

**Abpromise™** 承诺保证使用ab17787于以下的经测试应用

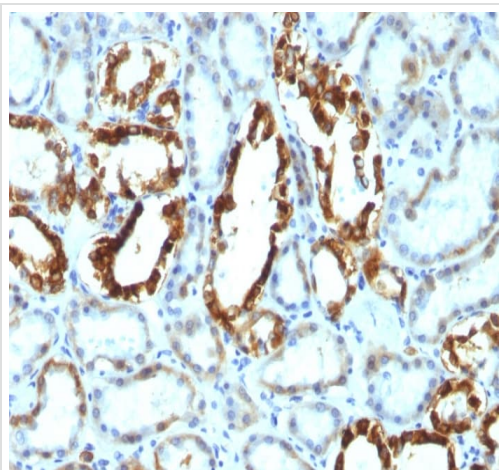
“应用说明”部分 下显示的仅为推荐的起始稀释度;实际最佳的稀释度/浓度应由使用者检定。

应用	Ab评论	说明
IHC-P		Use a concentration of 1 - 2 µg/ml. Perform heat mediated antigen retrieval with Tris/EDTA buffer pH 9.0 before commencing with IHC staining protocol.

## 靶标

功能	Plays an important role in the maintenance of intestinal epithelial homeostasis and the promotion of mucosal healing. Promotes VEGF-dependent neovascularization (By similarity). Contributes to phagocytic removal of apoptotic cells in many tissues. Specific ligand for the alpha-v/beta-3 and alpha-v/beta-5 receptors. Also binds to phosphatidylserine-enriched cell surfaces in a receptor-independent manner. Zona pellucida-binding protein which may play a role in gamete interaction. Binds specifically to rotavirus and inhibits its replication. Medin is the main constituent of aortic medial amyloid.
组织特异性	Mammary epithelial cell surfaces and aortic media. Overexpressed in several carcinomas.
序列相似性	Contains 1 EGF-like domain. Contains 2 F5/8 type C domains.
翻译后修饰	Medin has a ragged N-terminus with minor species starting at Pro-264 and Gly-273.
细胞定位	Membrane. Secreted.

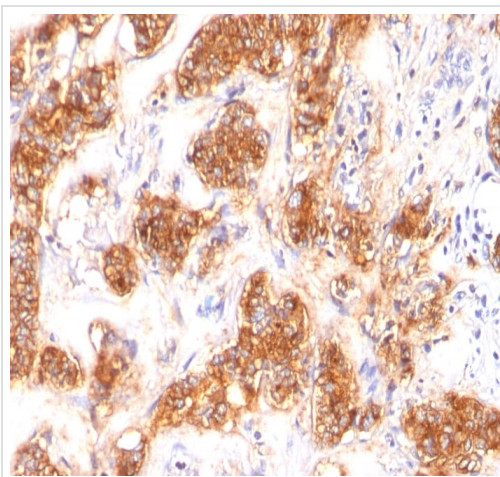
## 图片



Immunohistochemistry (Formalin/PFA-fixed paraffin-embedded sections) - Anti-Milk Fat Globule 1 antibody [SPM291] (ab17787)

IHC image of ab17787 staining in human carcinoma Renal Cell formalin fixed paraffin embedded tissue section, performed on a Leica Bond™ system using the standard protocol F. The section was pre-treated using heat mediated antigen retrieval with sodium citrate buffer (pH6, epitope retrieval solution 1) for 20 mins. The section was then incubated with ab17787, 1µg/ml, for 15 mins at room temperature and detected using an HRP conjugated compact polymer system. DAB was used as the chromogen. The section was then counterstained with haematoxylin and mounted with DPX.

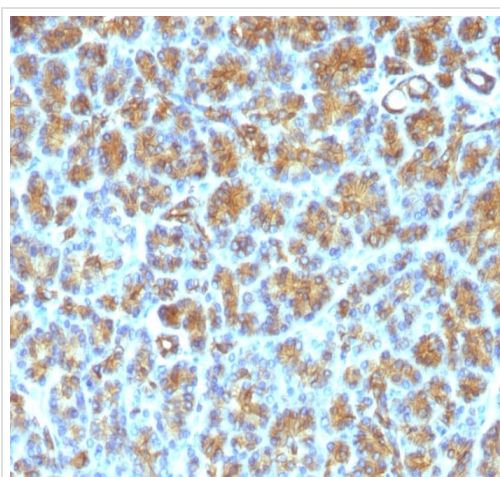
For other IHC staining systems (automated and non-automated) customers should optimize variable parameters such as antigen retrieval conditions, primary antibody concentration and antibody incubation times.



Immunohistochemistry (Formalin/PFA-fixed paraffin-embedded sections) - Anti-Milk Fat Globule 1 antibody [SPM291] (ab17787)

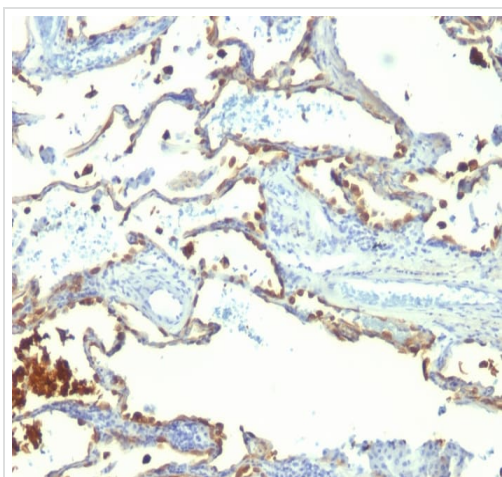
IHC image of ab17787 staining in human carcinoma breast formalin fixed paraffin embedded tissue section, performed on a Leica Bond™ system using the standard protocol F. The section was pre-treated using heat mediated antigen retrieval with sodium citrate buffer (pH6, epitope retrieval solution 1) for 20 mins. The section was then incubated with ab17787, 1µg/ml, for 15 mins at room temperature and detected using an HRP conjugated compact polymer system. DAB was used as the chromogen. The section was then counterstained with haematoxylin and mounted with DPX.

For other IHC staining systems (automated and non-automated) customers should optimize variable parameters such as antigen retrieval conditions, primary antibody concentration and antibody incubation times.



Immunohistochemistry (Formalin/PFA-fixed paraffin-embedded sections) - Anti-Milk Fat Globule 1 antibody [SPM291] (ab17787)

Immunohistochemical analysis of formalin-fixed, paraffin-embedded human pancreas tissue labeling Milk Fat Globule 1 with **ab18878** at 1 ug/ml.



Immunohistochemical analysis of formalin-fixed, paraffin-embedded human lung carcinoma tissue labeling Milk Fat Globule 1 with **ab18878** at 1 ug/ml.

Immunohistochemistry (Formalin/PFA-fixed paraffin-embedded sections) - Anti-Milk Fat Globule 1 antibody [SPM291] (ab17787)

**Please note:** All products are "FOR RESEARCH USE ONLY. NOT FOR USE IN DIAGNOSTIC PROCEDURES"

### Our Abpromise to you: Quality guaranteed and expert technical support

---

- Replacement or refund for products not performing as stated on the datasheet
- Valid for 12 months from date of delivery
- Response to your inquiry within 24 hours
- We provide support in Chinese, English, French, German, Japanese and Spanish
- Extensive multi-media technical resources to help you
- We investigate all quality concerns to ensure our products perform to the highest standards

If the product does not perform as described on this datasheet, we will offer a refund or replacement. For full details of the Abpromise, please visit <https://www.abcam.cn/abpromise> or contact our technical team.

### Terms and conditions

---

- Guarantee only valid for products bought direct from Abcam or one of our authorized distributors