


### Anti-MHC class I antibody [OX18] ab6405

★★★★☆ [1 Abreviews](#) [1 References](#) [2 图像](#)

#### 概述

产品名称	Anti-MHC class I抗体[OX18]
描述	小鼠单克隆抗体[OX18] to MHC class I
宿主	Mouse
经测试应用	适用于: IHC-Fr, Flow Cyt
种属反应性	与反应: Rat 预测可用于: Human 
免疫原	Full length protein. This information is proprietary to Abcam and/or its suppliers.
阳性对照	IHC-Fr: Normal rat placenta tissue. Flow Cyt: Lewis rat splenocytes.
常规说明	<p>This antibody clone is manufactured by Abcam. If you require a custom buffer formulation or conjugation for your experiments, please contact <a href="mailto:orders@abcam.com">orders@abcam.com</a>.</p> <p>The Life Science industry has been in the grips of a reproducibility crisis for a number of years. Abcam is leading the way in addressing this with our range of recombinant monoclonal antibodies and knockout edited cell lines for gold-standard validation. Please check that this product meets your needs before purchasing.</p> <p>If you have any questions, special requirements or concerns, please send us an inquiry and/or contact our Support team ahead of purchase. Recommended alternatives for this product can be found below, along with publications, customer reviews and Q&amp;As</p>

#### 性能

形式	Liquid
存放说明	Shipped at 4°C. Store at +4°C short term (1-2 weeks). Upon delivery aliquot. Store at -20°C long term. Avoid freeze / thaw cycle.
存储溶液	Preservative: 0.02% Sodium azide Constituents: PBS, 6.97% L-Arginine
纯度	Protein G purified
克隆	单克隆
克隆编号	OX18
同种型	IgG1

## 应用

## The Abpromise guarantee

Abpromise™承诺保证使用ab6405于以下的经测试应用

“应用说明”部分 下显示的仅为推荐的起始稀释度;实际最佳的稀释度/浓度应由使用者检定。

应用	Ab评论	说明
IHC-Fr	★★★★★ (1)	Use a concentration of 1 µg/ml.
Flow Cyt		Use at an assay dependent concentration.

## 靶标

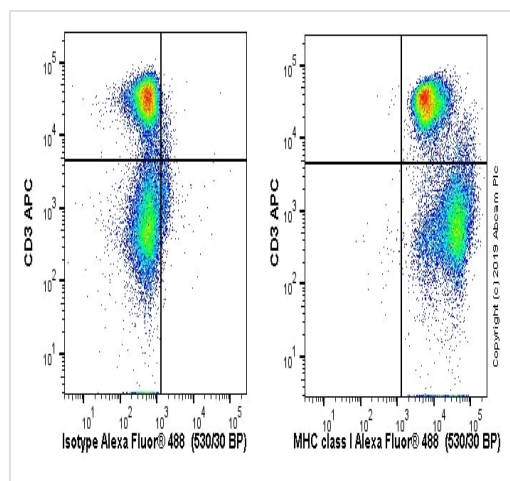
## 相关性

MHC Class I molecules play a central role in the immune system by presenting peptides derived from the endoplasmic reticulum lumen. MHC class I antigens are heterodimers consisting of one alpha chain (44kDa) with beta 2 microglobulin (11.5 kDa). The antigen is expressed by all somatic cells at varying levels. MHC Class I molecules are expressed on most nucleated cells where they present endogenously synthesized antigenic peptides to CD8+ T lymphocytes, which are usually cytotoxic T cells. Fibroblasts or neurons however only show a low level of antigen.

## 细胞定位

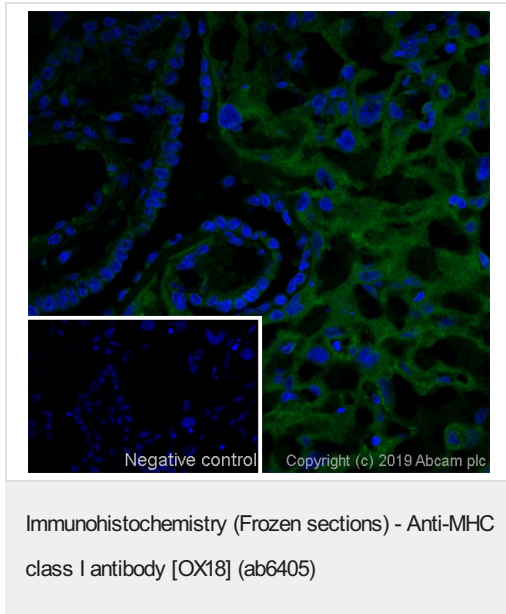
Cell Membrane; Type I membrane protein.

## 图片



Lewis rat splenocytes stained with ab6405 (right) or mouse IgG1 kappa; ([ab170190](#)) isotype (left). Cells were incubated for 30 min on ice in 1x PBS containing 10 % rat serum to block FC receptors and non-specific protein-protein interaction followed by the antibody (ab6405) or mouse IgG1 kappa; ([ab170190](#)) isotype ( $1 \times 10^6$  in 100 µL at 0.2 µg/mL) for 30 min on ice. The secondary antibody Goat anti-mouse IgG H&L (Alexa Fluor® 488, pre-adsorbed) ([ab150117](#)) was used at 1/2000 dilution for 30 min on ice. The cells were simultaneously stained with CD3. Acquisition of >30,000 events were collected using a 50 mW Blue laser (488nm) and 530/30 bandpass filter. Events were gated on live single cells.

Flow Cytometry - Anti-MHC class I antibody [OX18]  
(ab6405)



IHC image of MHC Class I staining in a section of frozen normal rat placenta\*.

The section was fixed using 10% formaldehyde in 1XPBS for 10 minutes. No antigen retrieval step was performed prior to staining. Non-specific protein-protein interactions were then blocked in TBS containing 0.025% (v/v) Triton X-100, 0.3M glycine and 1% (w/v) BSA for 1h at room temperature. The section was then incubated overnight at +4°C in TBS containing 0.025% (v/v) Triton X-100 and 1% (w/v) BSA with ab6405 (shown in green) at 1 µg/ml. The section was then incubated with **ab150117** (Goat polyclonal Secondary Antibody to Mouse IgG - H&L (Alexa Fluor® 488, 1/1000)) presaturated for 1 hour at room temperature. The secondary-only control image is taken from an identical assay without primary antibody. The section was then mounted using Fluoromount®.

Image was taken with a confocal microscope (Leica-Microsystems, TCS SP8).

For IHC staining systems (automated and non-automated), customers should optimize variable parameters such as antibody concentrations and incubation times.

\*Tissue obtained from Charles River.

**Please note:** All products are "FOR RESEARCH USE ONLY. NOT FOR USE IN DIAGNOSTIC PROCEDURES"

### Our Abpromise to you: Quality guaranteed and expert technical support

- Replacement or refund for products not performing as stated on the datasheet
- Valid for 12 months from date of delivery
- Response to your inquiry within 24 hours
- We provide support in Chinese, English, French, German, Japanese and Spanish
- Extensive multi-media technical resources to help you
- We investigate all quality concerns to ensure our products perform to the highest standards

If the product does not perform as described on this datasheet, we will offer a refund or replacement. For full details of the Abpromise, please visit <https://www.abcam.cn/abpromise> or contact our technical team.

### Terms and conditions

- Guarantee only valid for products bought direct from Abcam or one of our authorized distributors