

Anti-MHC class I + HLA A + HLA B antibody [EPR1394Y] ab134189

 **RabMAb**

★ ★ ★ ★ ★ **3 Abreviews** **17 References** **5 图像**

概述

| | |
|-------|--|
| 产品名称 | Anti-MHC class I + HLA A + HLA B抗体[EPR1394Y] |
| 描述 | 兔单克隆抗体[EPR1394Y] to MHC class I + HLA A + HLA B |
| 宿主 | Rabbit |
| 特异性 | In our hands this antibody did not work in WB with mouse samples, but customer data suggest that reactivity in ICC/IF and IHC. The target shows high sequence homology with HLA-C and HLA-E, and it is possible that this antibody will detect these proteins too. |
| 经测试应用 | 适用于: WB, IHC-P, Flow Cyt, ICC/IF |
| 种属反应性 | 与反应: Human |
| 免疫原 | Synthetic peptide within Human MHC class I. The exact sequence is proprietary. |
| 阳性对照 | WB: Raji, THP-1, and U-937 whole cell lysates. Human liver tissue lysate; ICC/IF: Raji cells; IHC-P: Human colon carcinoma tissue; Flow Cyt: Raji cells. |
| 常规说明 | <p>This product is a recombinant monoclonal antibody, which offers several advantages including:</p> <ul style="list-style-type: none"> - High batch-to-batch consistency and reproducibility - Improved sensitivity and specificity - Long-term security of supply - Animal-free production <p>For more information see here.</p> <p>Our RabMAb[®] technology is a patented hybridoma-based technology for making rabbit monoclonal antibodies. For details on our patents, please refer to RabMAb[®] patents.</p> <p>Rat: We have preliminary internal testing data to indicate this antibody may not react with this species. Please contact us for more information.</p> |

性能

| | |
|------|---|
| 形式 | Liquid |
| 存放说明 | Shipped at 4°C. Store at +4°C short term (1-2 weeks). Upon delivery aliquot. Store at -20°C long term. Avoid freeze / thaw cycle. |
| 存储溶液 | pH: 7.2 |

| | |
|------|---|
| | Preservative: 0.01% Sodium azide |
| | Constituents: 59% PBS, 40% Glycerol (glycerin, glycerine), 0.5% BSA |
| 纯度 | Protein A purified |
| 克隆 | 单克隆 |
| 克隆编号 | EPR1394Y |
| 同种型 | IgG |

应用

The Abpromise guarantee **Abpromise™**承诺保证使用ab134189于以下的经测试应用

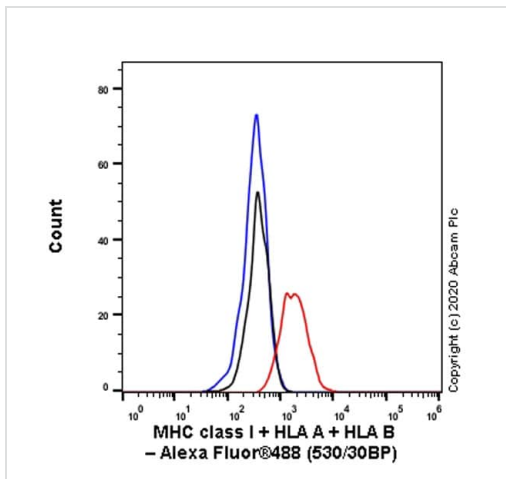
“应用说明”部分 下显示的仅为推荐的起始稀释度;实际最佳的稀释度/浓度应由使用者检定。

| 应用 | Ab评论 | 说明 |
|----------|-----------|---|
| WB | | 1/2000. Detects a band of approximately 41 kDa (predicted molecular weight: 41 kDa). For unpurified use at 1/1000 - 1/10000. |
| IHC-P | ★★★★☆ (2) | 1/4000. Perform heat mediated antigen retrieval with Tris/EDTA buffer pH 9.0 before commencing with IHC staining protocol. |
| Flow Cyt | | 1/100. For unpurified use at 1/20 - 1/1000. ab172730 - Rabbit monoclonal IgG, is suitable for use as an isotype control with this antibody. |
| ICC/IF | | 1/500. |

靶标

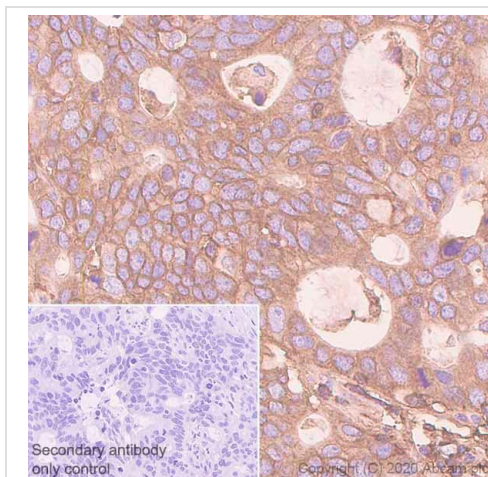
细胞定位 MHC class I: Cell Membrane; Type I membrane protein. HLA B: Membrane.

图片



Flow Cytometry - Anti-MHC class I + HLA A + HLA B antibody [EPR1394Y] (ab134189)

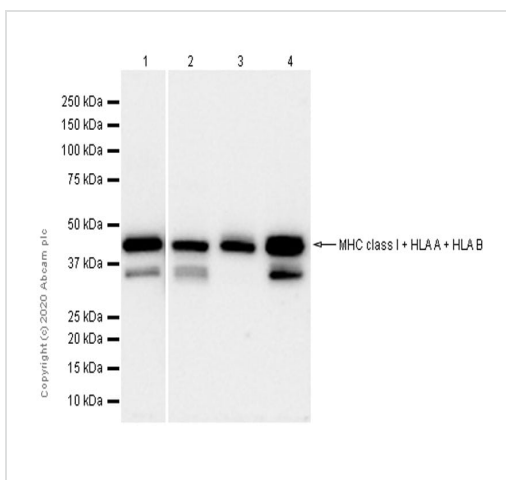
Flow Cytometry analysis of Raji (Human Burkitt's lymphoma B lymphocyte) cells, labeling MHC class I+HLA A+HLA B with Purified ab134189 at 1:100 dilution (10 µg/ml) (Red). Cells were fixed with / and permeabilised with /. A Goat anti rabbit IgG (Alexa Fluor® 488, **ab150077**) secondary antibody was used at 1:2000. Isotype control - Rabbit monoclonal IgG (Black). Unlabeled control - Cell without incubation with primary antibody and secondary antibody (Blue).



Immunohistochemistry (Formalin/PFA-fixed paraffin-embedded sections) - Anti-MHC class I + HLA A + HLA B antibody [EPR1394Y] (ab134189)

Immunohistochemistry (Formalin/PFA-fixed paraffin-embedded sections) analysis of human colon carcinoma tissue sections labeling MHC class I+HLA A+HLA B with purified ab134189 at 1/4000 dilution (0.26 µg/mL). Heat mediated antigen retrieval was performed using Bond™ Epitope Retrieval Solution 2 (pH 9.0). Rabbit specific IHC polymer detection kit HRP/DAB (**ab209101**) was used as the secondary antibody. Negative control: PBS instead of the primary antibody. Hematoxylin was used as a counterstain.

The immunostaining was performed on a Leica Biosystems BOND® RX instrument.



Western blot - Anti-MHC class I + HLA A + HLA B antibody [EPR1394Y] (ab134189)

All lanes : Anti-MHC class I + HLA A + HLA B antibody [EPR1394Y] (ab134189) at 1/2000 dilution (Purified)

Lane 1 : Raji (Human Burkitt's lymphoma B lymphocyte) whole cell lysate

Lane 2 : Human liver lysate

Lane 3 : THP-1 (Human monocytic leukemia monocyte) whole cell lysate

Lane 4 : U-937 (Human histiocytic lymphoma monocyte) whole cell lysate

Lysates/proteins at 20 µg per lane.

Secondary

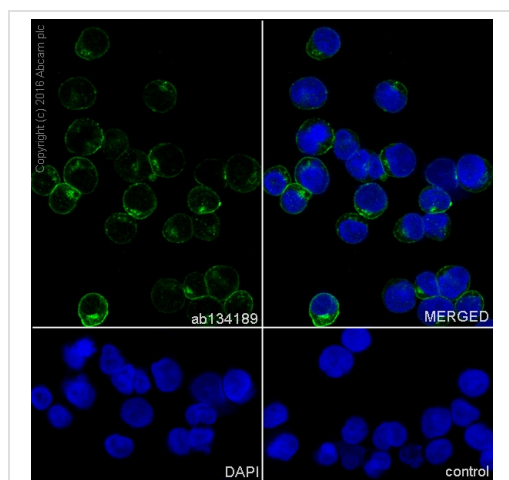
All lanes : Goat Anti-Rabbit IgG (HRP) with minimal cross-reactivity with human IgG at 1/2000 dilution

Predicted band size: 41 kDa

Observed band size: 44 kDa

Additional bands at: 35 kDa. We are unsure as to the identity of these extra bands.

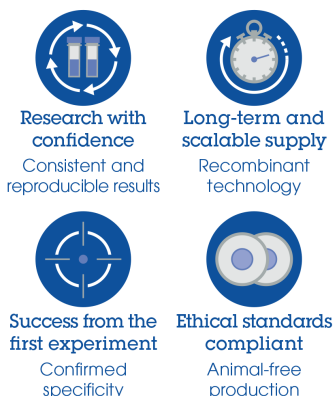
Blocking/Diluting buffer: 5% NFDM/TBST



Immunocytochemistry/ Immunofluorescence analysis of Raji (human Burkitt's lymphoma B lymphocyte) cells labeling MHC class I+HLA A+HLA B with purified ab134189 at 1/500 dilution (4.3 µg/mL). Cells were fixed in 100% Methanol. Goat anti rabbit IgG (Alexa Fluor® 488, **ab150077**) was used as the secondary antibody at 1/1000 (2 µg/mL) dilution. DAPI (blue) was used as nuclear counterstain.

Immunocytochemistry/ Immunofluorescence - Anti-MHC class I + HLA A + HLA B antibody
[EPR1394Y] (ab134189)

Why choose a recombinant antibody?



Anti-MHC class I + HLA A + HLA B antibody
[EPR1394Y] (ab134189)

Please note: All products are "FOR RESEARCH USE ONLY. NOT FOR USE IN DIAGNOSTIC PROCEDURES"

Our Abpromise to you: Quality guaranteed and expert technical support

- Replacement or refund for products not performing as stated on the datasheet
- Valid for 12 months from date of delivery
- Response to your inquiry within 24 hours

- We provide support in Chinese, English, French, German, Japanese and Spanish
- Extensive multi-media technical resources to help you
- We investigate all quality concerns to ensure our products perform to the highest standards

If the product does not perform as described on this datasheet, we will offer a refund or replacement. For full details of the Abpromise, please visit <https://www.abcam.cn/abpromise> or contact our technical team.

Terms and conditions

- Guarantee only valid for products bought direct from Abcam or one of our authorized distributors