

Anti-METTL3 antibody [EPR18810] ab195352

敲除验证
重组
RabMAb

★★★★★
[8 Abreviews](#)
[237 References](#)
[19 图像](#)

概述

| | |
|-------|---|
| 产品名称 | Anti-METTL3抗体[EPR18810] |
| 描述 | 兔单克隆抗体[EPR18810] to METTL3 |
| 宿主 | Rabbit |
| 经测试应用 | 适用于: WB, IHC-P, ICC/IF, IP, Flow Cyt (Intra) |
| 种属反应性 | 与反应: Mouse, Rat, Human 预测可用于: Sheep, Goat, Horse, Guinea pig, Cow, Cat, Dog, Pig, Non human primates  |
| 免疫原 | Recombinant fragment. This information is proprietary to Abcam and/or its suppliers. |
| 阳性对照 | WB: Raji, HeLa, HEK-293, Jurkat, NCCIT, F9, Neuro-2a, LLC1, C6, RAW 264.7, PC-12 and NIH/3T3 cell lysates; human thymus lysate, mouse brain, spleen and heart lysates; rat brain lysate. IHC-P: Human bladder cancer, mouse testis and rat testis tissues, mouse skin, rat skin. ICC/IF: HCT116 and HeLa, NIH/3T3 cells. IP: HeLa cell lysate. |
| 常规说明 | <p>This product is a recombinant monoclonal antibody, which offers several advantages including:</p> <ul style="list-style-type: none"> - High batch-to-batch consistency and reproducibility - Improved sensitivity and specificity - Long-term security of supply - Animal-free production <p>For more information see here.</p> <p>Our RabMAb[®] technology is a patented hybridoma-based technology for making rabbit monoclonal antibodies. For details on our patents, please refer to RabMAb[®] patents.</p> |

性能

| | |
|------|---|
| 形式 | Liquid |
| 存放说明 | Shipped at 4°C. Store at +4°C short term (1-2 weeks). Upon delivery aliquot. Store at -20°C long term. Avoid freeze / thaw cycle. |
| 存储溶液 | <p>pH: 7.2</p> <p>Preservative: 0.01% Sodium azide</p> <p>Constituents: PBS, 40% Glycerol, 0.05% BSA</p> |
| 纯度 | Protein A purified |
| 克隆 | 单克隆 |

克隆编号EPR18810

同种型IgG

应用

The Abpromise guarantee **Abpromise™**承诺保证使用ab195352于以下的经测试应用

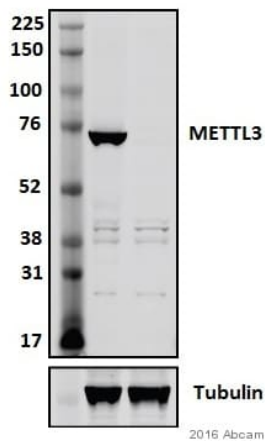
“应用说明”部分 下显示的仅为推荐的起始稀释度;实际最佳的稀释度/浓度应由使用者检定。

| 应用 | Ab评论 | 说明 |
|------------------|-----------|--|
| WB | ★★★★★ (4) | 1/1000. Detects a band of approximately 64 kDa (predicted molecular weight: 64 kDa). Milk recommended as blocking agent. |
| IHC-P | ★★★★☆ (1) | 1/500. Perform heat mediated antigen retrieval with Tris/EDTA buffer pH 9.0 before commencing with IHC staining protocol. |
| ICC/IF | ★★★★★ (2) | 1/1000. |
| IP | | 1/50. |
| Flow Cyt (Intra) | | Use at an assay dependent concentration. ab172730 - Rabbit monoclonal IgG, is suitable for use as an isotype control with this antibody. |

靶标

| | |
|-------|--|
| 功能 | N6-methyltransferase that methylates adenosine residues of some mRNAs. N6-methyladenosine (m6A), which is present at internal sites of some mRNAs, may play a role in the efficiency of mRNA splicing, transport or translation. |
| 组织特异性 | Widely expressed at low level. Expressed in spleen, thymus, prostate, testis, ovary, small intestine, colon and peripheral blood leukocytes. |
| 序列相似性 | Belongs to the MT-A70-like family. |
| 翻译后修饰 | Phosphorylated upon DNA damage, probably by ATM or ATR. |
| 细胞定位 | Nucleus speckle. Colocalizes with speckles in interphase nuclei. Suggesting that it may be associated with nuclear pre-mRNA splicing components. |

图片



Western blot - Anti-METTL3 antibody [EPR18810]
(ab195352)
This image is courtesy of an Abreview by Pedro Batista.

All lanes : Anti-METTL3 antibody [EPR18810] (ab195352) at 1/1000 dilution

Lane 1 : Mouse embryonic stem cells

Lane 2 : Mouse embryonic stem cells (METTL3 Knock-out)

Lysates/proteins at 15 µg per lane.

Secondary

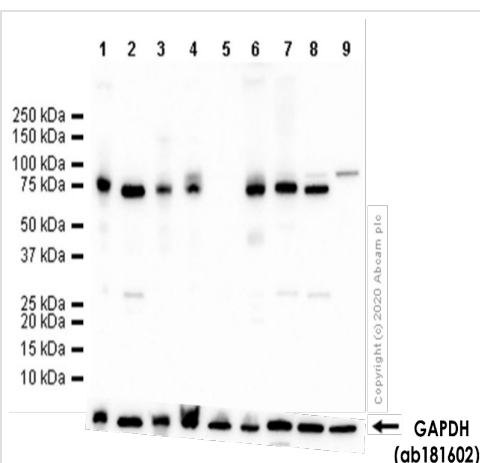
All lanes : Goat anti-Rabbit Polyclonal at 1/10000 dilution

Performed under reducing conditions.

Predicted band size: 64 kDa

Exposure time: 5 minutes

Blocking step: 5% Milk for 30 minutes at 25°C.



Western blot - Anti-METTL3 antibody [EPR18810]
(ab195352)

All lanes : Anti-METTL3 antibody [EPR18810] (ab195352) at 1/1000 dilution

Lane 1 : Mouse brain lysate prepared in 1%SDS Hot lysis method at 20 µg

Lane 2 : Mouse brain lysate prepared in RIPA lysis method at 20 mg/ml

Lane 3 : Mouse heart lysate prepared in 1%SDS Hot lysis method at 20 µg

Lane 4 : Mouse heart lysate prepared in RIPA lysis method at 20 mg/ml

Lane 5 : Mouse kidney lysate prepared in RIPA lysis method at 20 µg

Lanes 6-7 : Mouse spleen lysate prepared in spleen lysis method at 20 µg

Lane 8 : Rat brain lysate prepared in RIPA lysis method at 20 µg

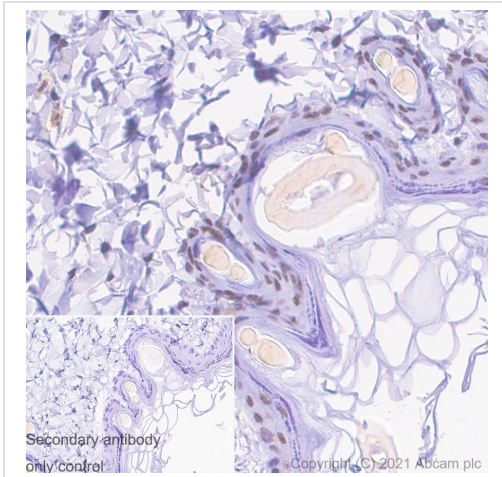
Lane 9 : Rat kidney lysate prepared in RIPA lysis method at 20 µg

Secondary

All lanes : Goat Anti-Rabbit IgG H&L (HRP) (**ab97051**) at 1/20000 dilution

Predicted band size: 64 kDa

Observed band size: 64 kDa

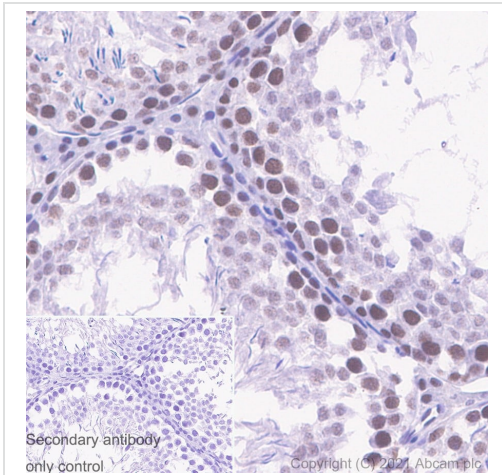


Immunohistochemistry (Formalin/PFA-fixed paraffin-embedded sections) - Anti-METTL3 antibody [EPR18810] (ab195352)

Immunohistochemical analysis of paraffin-embedded Rat skin tissue labeling METTL3 using ab195352 at 1/2000 dilution, followed by a Ready to use Rabbit specific IHC polymer detection kit HRP/DAB (**ab209101**). Counterstain: Hematoxylin. Nuclear staining on Rat skin. The section was incubated with ab195352 for 30 mins at room temperature. The immunostaining was performed on a Leica Biosystems BOND® RX instrument

Perform Heat mediated antigen retrieval using Bond™ Epitope Retrieval Solution 2 (pH 9.0) for 20 minutes.

Inset image: negative control - secondary antibody only.

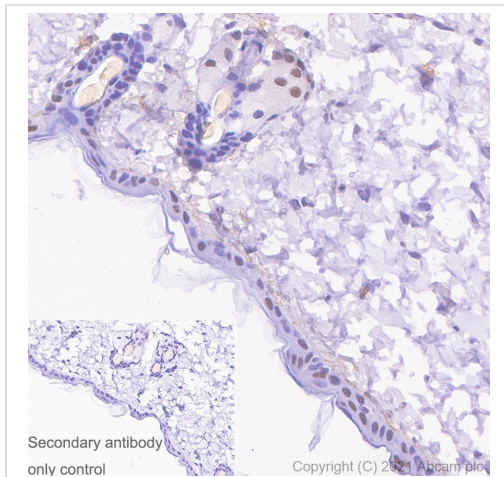


Immunohistochemistry (Formalin/PFA-fixed paraffin-embedded sections) - Anti-METTL3 antibody [EPR18810] (ab195352)

Immunohistochemical analysis of paraffin-embedded Rat testis tissue labeling METTL3 using ab195352 at 1/2000 dilution, followed by a Ready to use Rabbit specific IHC polymer detection kit HRP/DAB (**ab209101**). Counterstain: Hematoxylin. Nuclear staining on Rat testis. The section was incubated with ab195352 for 30 mins at room temperature. The immunostaining was performed on a Leica Biosystems BOND® RX instrument

Perform Heat mediated antigen retrieval using Bond™ Epitope Retrieval Solution 2 (pH 9.0) for 20 minutes.

Inset image: negative control - secondary antibody only.

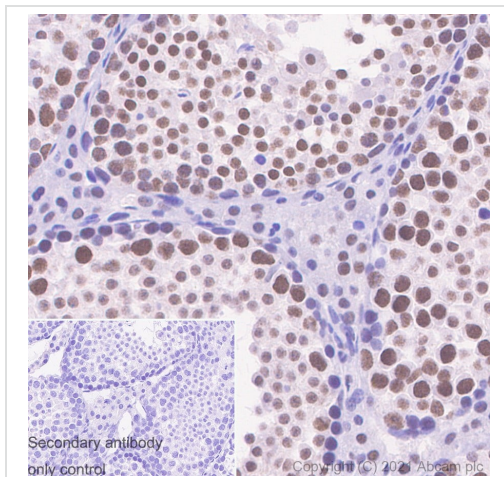


Immunohistochemistry (Formalin/PFA-fixed paraffin-embedded sections) - Anti-METTL3 antibody [EPR18810] (ab195352)

Immunohistochemical analysis of paraffin-embedded Mouse skin labeling METTL3 using ab195352 at 1/2000 dilution, followed by a Ready to use Rabbit specific IHC polymer detection kit HRP/DAB ([ab209101](#)). Counterstain: Hematoxylin. Nuclear staining on Mouse skin. The section was incubated with ab195352 for 30 mins at room temperature. The immunostaining was performed on a Leica Biosystems BOND® RX instrument

Perform Heat mediated antigen retrieval using Bond™ Epitope Retrieval Solution 2 (pH 9.0) for 20 minutes.

Inset image: negative control - secondary antibody only.

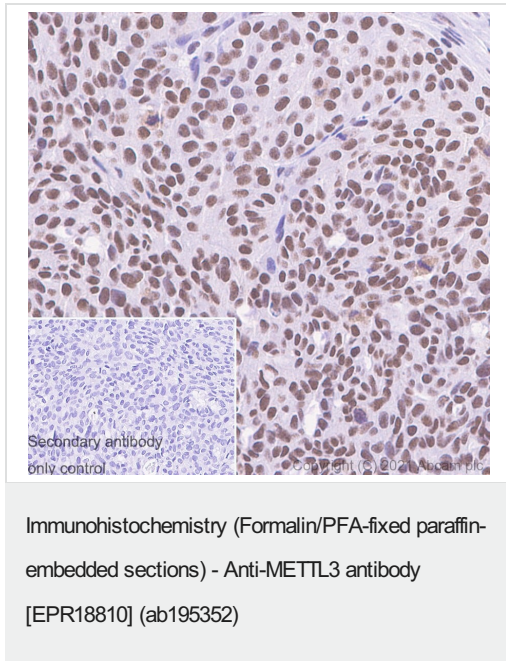


Immunohistochemistry (Formalin/PFA-fixed paraffin-embedded sections) - Anti-METTL3 antibody [EPR18810] (ab195352)

Immunohistochemical analysis of paraffin-embedded Mouse testis tissue labeling METTL3 using ab195352 at 1/2000 dilution, followed by a Ready to use Rabbit specific IHC polymer detection kit HRP/DAB ([ab209101](#)). Counterstain: Hematoxylin. Nuclear staining on Mouse testis. The section was incubated with ab195352 for 30 mins at room temperature. The immunostaining was performed on a Leica Biosystems BOND® RX instrument

Perform Heat mediated antigen retrieval using Bond™ Epitope Retrieval Solution 2 (pH 9.0) for 20 minutes.

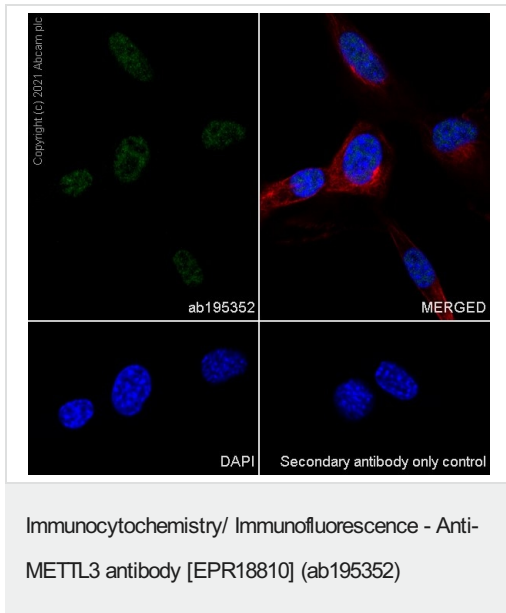
Inset image: negative control - secondary antibody only.



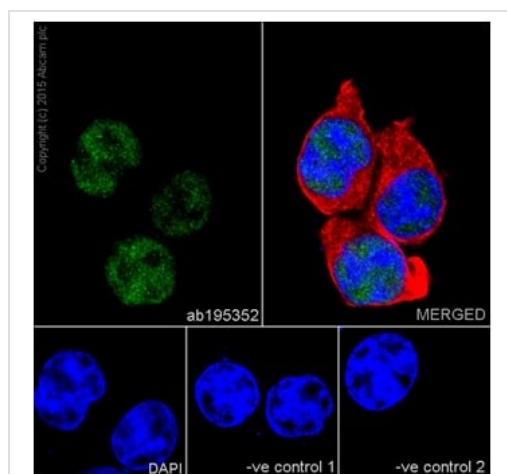
Immunohistochemical analysis of paraffin-embedded Human ovarian cancer tissue labeling METTL3 using ab195352 at 1/2000 dilution, followed by a Ready to use Rabbit specific IHC polymer detection kit HRP/DAB (**ab209101**). Counterstain: Hematoxylin. Nuclear staining on human ovarian cancer. The section was incubated with ab195352 for 30 mins at room temperature. The immunostaining was performed on a Leica Biosystems BOND® RX instrument

Perform Heat mediated antigen retrieval using Bond™ Epitope Retrieval Solution 2 (pH 9.0) for 20 minutes.

Inset image: negative control - secondary antibody only.



Immunofluorescent analysis of 4% paraformaldehyde-fixed, 0.1% Triton X-100 permeabilized NIH/3T3 (mouse embryonic fibroblast) cells labeling METTL3 with ab195352 at 1/200 dilution, followed by Goat Anti-Rabbit IgG H&L (Alexa Fluor® 488) (**ab150081**) secondary antibody at 1/1000 dilution (green). Confocal image showing nuclear staining in NIH/3T3 cells. The nuclear counter stain is DAPI (blue). Anti-alpha Tubulin mouse monoclonal antibody - Microtubule Marker (Alexa Fluor® 594) **ab195889** was used at 1/200 dilution as the counterstain.



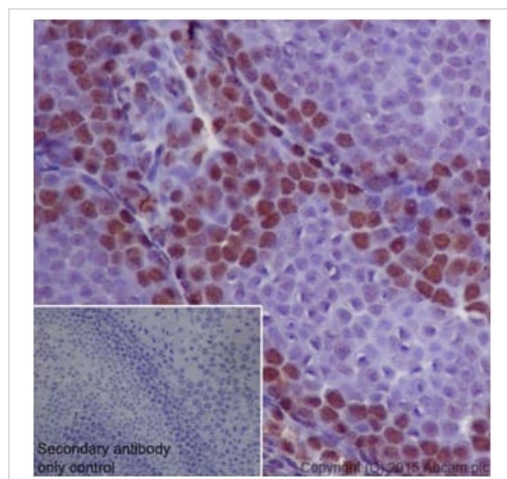
Immunocytochemistry/ Immunofluorescence - Anti-METTL3 antibody [EPR18810] (ab195352)

Immunofluorescent analysis of 4% paraformaldehyde-fixed, 0.1% Triton X-100 permeabilized HCT116 (Human colorectal carcinoma cell line) cells labeling METTL3 with ab195352 at 1/1000 dilution, followed by Goat Anti-Rabbit IgG H&L (Alexa Fluor® 488) (**ab150077**) secondary antibody at 1/1000 dilution (green). Confocal image showing nuclear staining on HCT116 cell line. The nuclear counter stain is DAPI (blue).

Tubulin is detected with anti-alpha Tubulin mouse mAb (**ab7291**) at 1/1000 dilution, followed by Goat Anti-Mouse IgG H&L (AlexaFluor®594) (**ab150120**) secondary antibody at 1/1000 dilution (red).

The negative controls are as follows:

1. ab195352 at 1/1000 dilution, followed by Goat Anti-Mouse IgG H&L (AlexaFluor®594) (**ab150120**) secondary antibody at 1/1000 dilution.
2. anti-alpha Tubulin mouse mAb (**ab7291**) at 1/1000 dilution, followed by Goat Anti-Rabbit IgG H&L (Alexa Fluor® 488) (**ab150077**) secondary antibody at 1/1000 dilution.

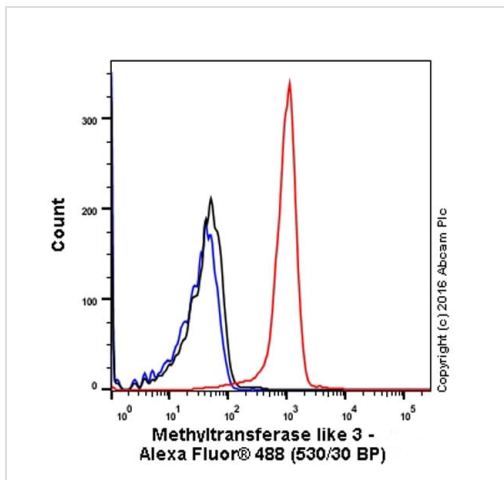


Immunohistochemistry (Formalin/PFA-fixed paraffin-embedded sections) - Anti-METTL3 antibody [EPR18810] (ab195352)

Immunohistochemical analysis of paraffin-embedded rat testis tissue labeling METTL3 using ab195352 at 1/500 dilution, followed by Goat Anti-Rabbit IgG H&L (HRP) (**ab97051**) secondary antibody at 1/500 dilution. Counterstain: Hematoxylin. Inset image: negative control obtained using PBS instead of ab195352, and secondary antibody only.

Note: Nuclear staining on rat testis was observed.

Perform heat mediated antigen retrieval with Tris/EDTA buffer pH 9.0 before commencing with IHC staining protocol.

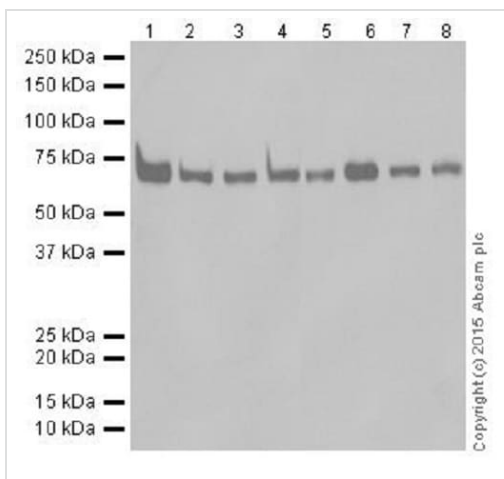


Flow Cytometry (Intracellular) - Anti-METTL3 antibody [EPR18810] (ab195352)

ab195352 staining METTL3 in the human cell line HEK-293 (Human epithelial cell line from embryonic kidney) by intracellular flow cytometry. Cells were fixed with 4% paraformaldehyde and the sample was incubated with the primary antibody at a 1/70 dilution, followed by Goat-Anti Rabbit IgG (Alexa Fluor® 488) secondary antibody at a 1/2000 dilution.

Isotype control: Rabbit monoclonal IgG (Black)

Unlabelled control: Cell without incubation with primary antibody and secondary antibody (Blue)



Western blot - Anti-METTL3 antibody [EPR18810] (ab195352)

All lanes : Anti-METTL3 antibody [EPR18810] (ab195352) at 1/5000 dilution

Lane 1 : Raji (Human Burkitt's lymphoma cell line) whole cell lysate

Lane 2 : HeLa (Human epithelial cells from cervix adenocarcinoma) whole cell lysate

Lane 3 : HEK-293 (Human epithelial cells from embryonic kidney) whole cell lysate

Lane 4 : Jurkat (Human T cell leukemia cells from peripheral blood) whole cell lysate

Lane 5 : NCCIT (human pluripotent embryonal carcinoma) whole cell lysate

Lane 6 : F9 (Mouse embryo testicular cancer cell line) whole cell lysate

Lane 7 : Neuro-2a (Mouse neuroblastoma cells) whole cell lysate

Lane 8 : LLC1 (Mouse lung carcinoma) whole cell lysate

Lysates/proteins at 20 µg per lane.

Secondary

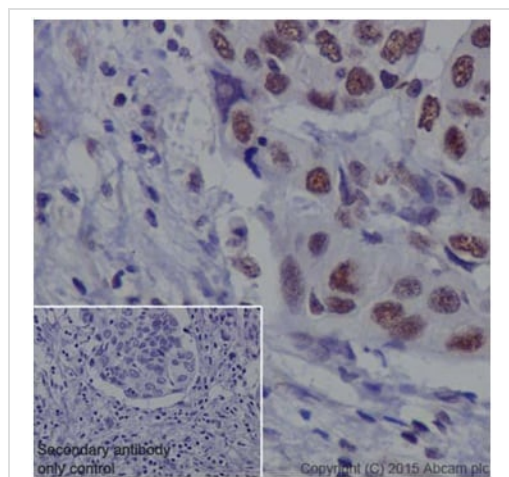
All lanes : Goat Anti-Rabbit IgG H&L (HRP) (**ab97051**) at 1/100000 dilution

Predicted band size: 64 kDa

Observed band size: 64 kDa

Exposure time: 10 seconds

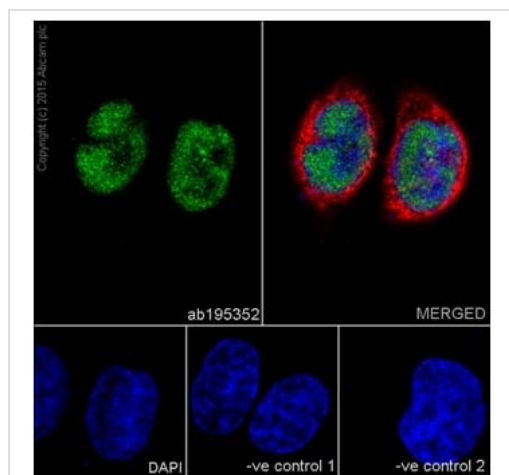
5% NFDM/TBST: Blocking and diluting buffer.



Immunohistochemical analysis of paraffin-embedded human bladder cancer tissue labeling METTL3 using ab195352 at 1/500 dilution, followed by Goat Anti-Rabbit IgG H&L (HRP) (**ab97051**) secondary antibody at 1/500 dilution. Counterstain: Hematoxylin. Inset image: negative control obtained using PBS instead of ab195352, and secondary antibody only.

Note: Nuclear staining on human bladder cancer was observed.

Perform heat mediated antigen retrieval with Tris/EDTA buffer pH 9.0 before commencing with IHC staining protocol.

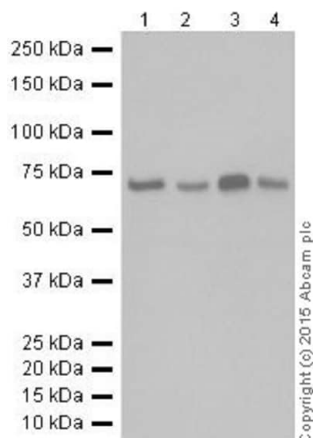


Immunofluorescent analysis of 4% paraformaldehyde-fixed, 0.1% Triton X-100 permeabilized HeLa (Human epithelial cells from cervix adenocarcinoma) cells labeling METTL3 with ab195352 at 1/1000 dilution, followed by Goat Anti-Rabbit IgG H&L (Alexa Fluor® 488) (**ab150077**) secondary antibody at 1/1000 dilution (green). Confocal image showing nuclear staining on HeLa cell line. The nuclear counter stain is DAPI (blue).

Tubulin is detected with Anti-alpha Tubulin mouse MAb (**ab7291**) at 1/1000 dilution and Goat Anti-Mouse IgG H&L (Alexa Fluor® 594) (**ab150120**) secondary antibody at 1/1000 dilution (red).

The negative controls are as follows:

1. ab195352 at 1/1000 dilution, followed by Goat Anti-Mouse IgG H&L (Alexa Fluor® 594) (**ab150120**) secondary antibody at 1/1000 dilution.
2. Anti-alpha Tubulin mouse MAb (**ab7291**) at 1/1000 dilution, followed by Goat Anti-Rabbit IgG H&L (Alexa Fluor® 488) (**ab150077**) secondary antibody at 1/1000 dilution.



Western blot - Anti-METTL3 antibody [EPR18810]
(ab195352)

All lanes : Anti-METTL3 antibody [EPR18810] (ab195352) at 1/1000 dilution

Lane 1 : C6 (Rat glial tumor cells) whole cell lysate

Lane 2 : RAW 264.7 (Mouse macrophage cells transformed with Abelson murine leukemia virus) whole cell lysate

Lane 3 : PC-12 (Rat adrenal gland pheochromocytoma) whole cell lysate

Lane 4 : NIH/3T3 (Mouse embryo fibroblast cells) whole cell lysate

Lysates/proteins at 10 µg per lane.

Secondary

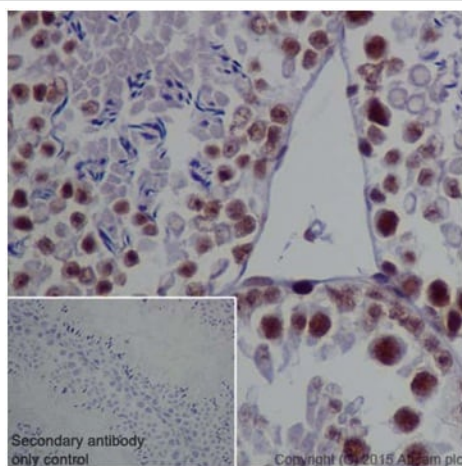
All lanes : Anti-Rabbit IgG (HRP), specific to the non-reduced form of IgG at 1/100000 dilution

Predicted band size: 64 kDa

Observed band size: 64 kDa

Exposure time: 2 seconds

5% NFDm/TBST: Blocking and diluting buffer.



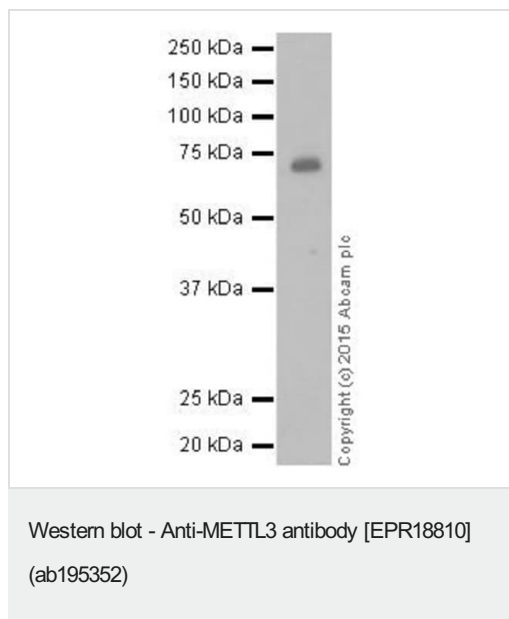
Immunohistochemistry (Formalin/PFA-fixed paraffin-embedded sections) - Anti-METTL3 antibody [EPR18810] (ab195352)

Immunohistochemical analysis of paraffin-embedded mouse testis tissue labeling METTL3 using ab195352 at 1/500 dilution, followed by Goat Anti-Rabbit IgG H&L (HRP) ([ab97051](#)) secondary antibody at 1/500 dilution. Counterstain: Hematoxylin.

Inset image: negative control obtained using PBS instead of ab195352, and secondary antibody only.

Note: Nuclear staining on mouse testis was observed.

Perform heat mediated antigen retrieval with Tris/EDTA buffer pH 9.0 before commencing with IHC staining protocol.



Anti-METTL3 antibody [EPR18810] (ab195352) at 1/5000 dilution
+ Human thymus lysate at 10 µg

Secondary

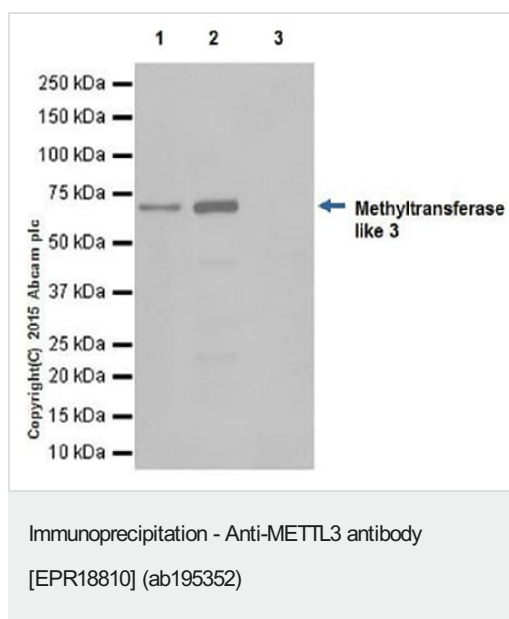
Anti-Rabbit IgG (HRP), specific to the non-reduced form of IgG at 1/10000 dilution

Predicted band size: 64 kDa

Observed band size: 64 kDa

Exposure time: 3 minutes

5% NFDM/TBST: Blocking and diluting buffer.



METTL3 was immunoprecipitated from 1mg of HeLa (Human epithelial cells from cervix adenocarcinoma) whole cell lysate with ab195352 at 1/50 dilution. Western blot was performed from the immunoprecipitate using ab195352 at 1/1000 dilution. VeriBlot for IP Detection Reagent (HRP) ([ab131366](#)), was used for detection at 1/10000 dilution.

Lane 1: Input: 10µg of HeLa whole cell lysate.

Lane 2: HeLa whole cell lysate following IP with ab195352.

Lane 3: Negative control: IP using Rabbit monoclonal IgG ([ab172730](#)) instead of ab195352 in HeLa whole cell lysates.

Blocking and dilution buffer and concentration: 5% NFDM/TBST. 1 second exposure.

Why choose a recombinant antibody?



Research with confidence
Consistent and reproducible results



Long-term and scalable supply
Recombinant technology



Success from the first experiment
Confirmed specificity



Ethical standards compliant
Animal-free production

Anti-METTL3 antibody [EPR18810] (ab195352)

Please note: All products are "FOR RESEARCH USE ONLY. NOT FOR USE IN DIAGNOSTIC PROCEDURES"

Our Abpromise to you: Quality guaranteed and expert technical support

- Replacement or refund for products not performing as stated on the datasheet
- Valid for 12 months from date of delivery
- Response to your inquiry within 24 hours
- We provide support in Chinese, English, French, German, Japanese and Spanish
- Extensive multi-media technical resources to help you
- We investigate all quality concerns to ensure our products perform to the highest standards

If the product does not perform as described on this datasheet, we will offer a refund or replacement. For full details of the Abpromise, please visit <https://www.abcam.cn/abpromise> or contact our technical team.

Terms and conditions

- Guarantee only valid for products bought direct from Abcam or one of our authorized distributors