




Anti-METTTL14 antibody [CL4252] ab220030

★★★★☆ **3 Abreviews** **25 References** **8 图像**

概述

产品名称	Anti-METTTL14抗体[CL4252]
描述	小鼠单克隆抗体[CL4252] to METTTL14
宿主	Mouse
经测试应用	适用于: ICC/IF, WB, IHC-P
种属反应性	与反应: Human 预测可用于: Mouse, Chicken, Cow, Orangutan 
免疫原	Recombinant fragment (proprietary-tag) corresponding to Human METTTL14 aa 1-100. Database link: Q9HCE5  Run BLAST with  Run BLAST with
阳性对照	Human testis, Human endometrium, Human prostate, Human cervix, Human cerebral cortex and Human duodenum tissues; A431 cell line lysate. ICC/IF: RH-30 cells.
常规说明	<p>The Life Science industry has been in the grips of a reproducibility crisis for a number of years. Abcam is leading the way in addressing this with our range of recombinant monoclonal antibodies and knockout edited cell lines for gold-standard validation. Please check that this product meets your needs before purchasing.</p> <p>If you have any questions, special requirements or concerns, please send us an inquiry and/or contact our Support team ahead of purchase. Recommended alternatives for this product can be found below, along with publications, customer reviews and Q&As</p>

性能

形式	Liquid
存放说明	Shipped at 4°C. Store at +4°C short term (1-2 weeks). Upon delivery aliquot. Store at -20°C long term. Avoid freeze / thaw cycle.
存储溶液	pH: 7.20 Preservative: 0.02% Sodium azide Constituents: 40% Glycerol (glycerin, glycerine), 59% PBS
纯度	Protein A purified
克隆	单克隆
克隆编号	CL4252

同种型

IgG2a

应用

The Abpromise guarantee

Abpromise™ 承诺保证使用 ab220030 于以下的经测试应用

“应用说明”部分 下显示的仅为推荐的起始稀释度;实际最佳的稀释度/浓度应由使用者检定。

应用	Ab评论	说明
ICC/IF		Use a concentration of 2 - 10 µg/ml.
WB		1/500 - 1/1000. Predicted molecular weight: 52 kDa.
IHC-P	★★★★☆ (2)	1/1000 - 1/2500. Perform heat mediated antigen retrieval with citrate buffer pH 6 before commencing with IHC staining protocol.

靶标

功能

N6-methyltransferase that methylates adenosine residues of some mRNAs and acts as a regulator of the circadian clock and differentiation of embryonic stem cells. N6-methyladenosine (m6A), which takes place at the 5'-[AG]GAC-3' consensus sites of some mRNAs, plays a role in the efficiency of mRNA splicing, processing and mRNA stability (PubMed:24316715, PubMed:24407421, PubMed:25719671). M6A regulates the length of the circadian clock: acts as a early pace-setter in the circadian loop. M6A also acts as a regulator of mRNA stability: in embryonic stem cells (ESCs), m6A methylation of mRNAs encoding key naive pluripotency-promoting transcripts results in transcript destabilization.

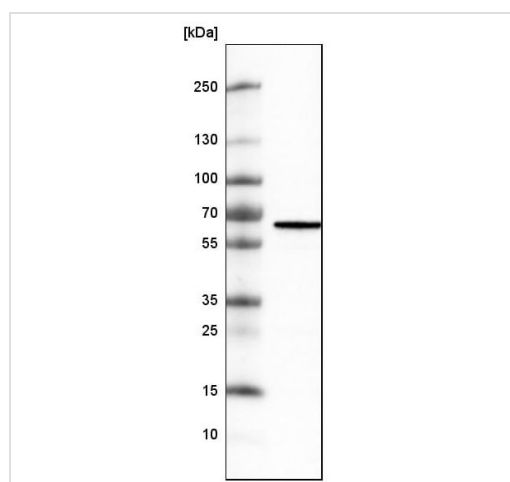
序列相似性

Belongs to the MT-A70-like family.

细胞定位

Nucleus.

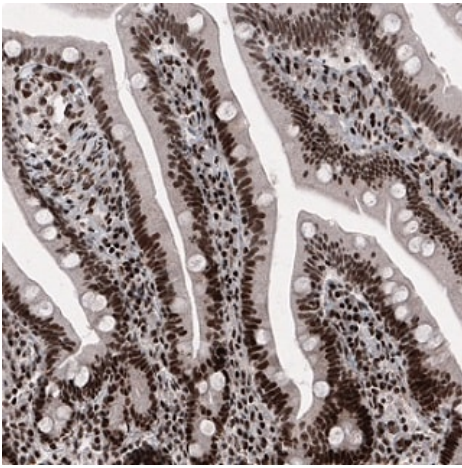
图片



Anti-METTL14 antibody [CL4252] (ab220030) at 1/500 dilution + A431 cell line lysate

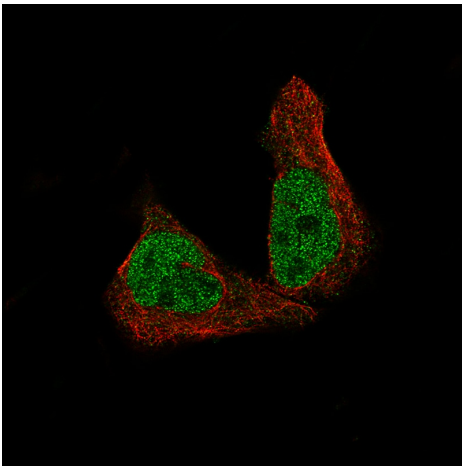
Predicted band size: 52 kDa

Western blot - Anti-METTL14 antibody [CL4252]
(ab220030)



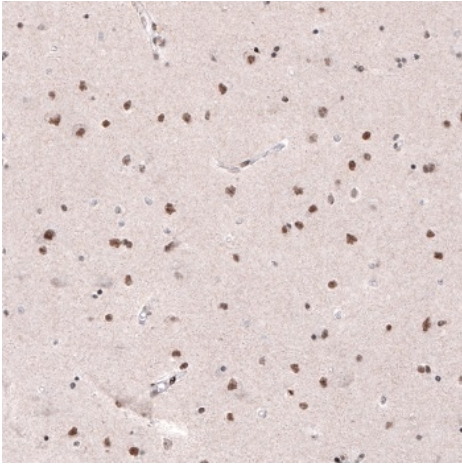
Immunohistochemistry (Formalin/PFA-fixed paraffin-embedded sections) - Anti-METTL14 antibody [CL4252] (ab220030)

Immunohistochemical analysis of formalin-fixed and paraffin-embedded Human duodenum tissue labeling METTL14 with ab220030 at 1/1000 dilution, showing strong nuclear positivity in glandular cells and in the connective tissue.



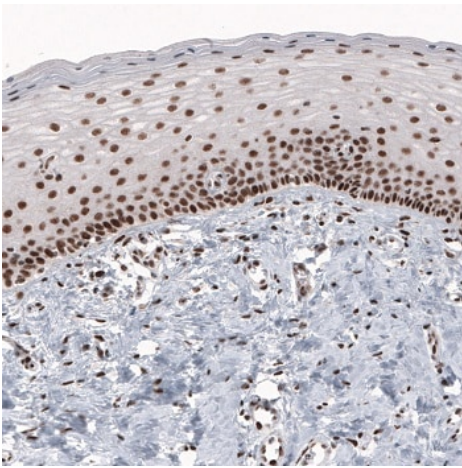
Immunocytochemistry/ Immunofluorescence - Anti-METTL14 antibody [CL4252] (ab220030)

Immunocytochemistry/ Immunofluorescence analysis of RH-30 cells labeling METTL14 with ab220030 at 2-10 $\mu\text{g}/\text{mL}$. Cells were fixed with PFA and permeabilised with Triton X-100. The data is showing specific staining in the nucleoplasm in green. Microtubule- and nuclear probes are visualized in red and blue, respectively (where available).



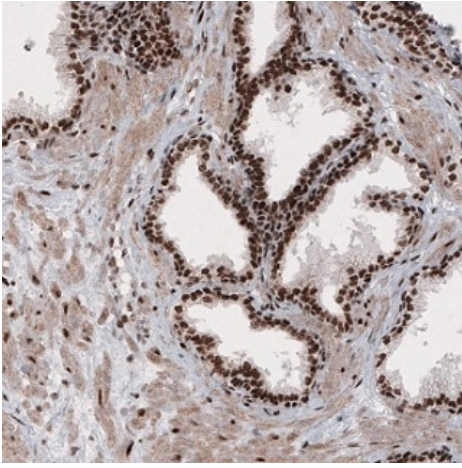
Immunohistochemistry (Formalin/PFA-fixed paraffin-embedded sections) - Anti-METTL14 antibody [CL4252] (ab220030)

Immunohistochemical analysis of formalin-fixed and paraffin-embedded Human cerebral cortex tissue labeling METTL14 with ab220030 at 1/1000 dilution, showing moderate nuclear positivity in neurons.



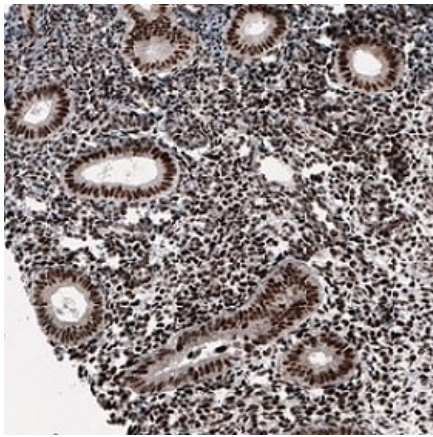
Immunohistochemistry (Formalin/PFA-fixed paraffin-embedded sections) - Anti-METTL14 antibody [CL4252] (ab220030)

Immunohistochemical analysis of formalin-fixed and paraffin-embedded Human cervix tissue labeling METTL14 with ab220030 at 1/1000 dilution, showing strong nuclear positivity in squamous epithelium and connective tissue cells.



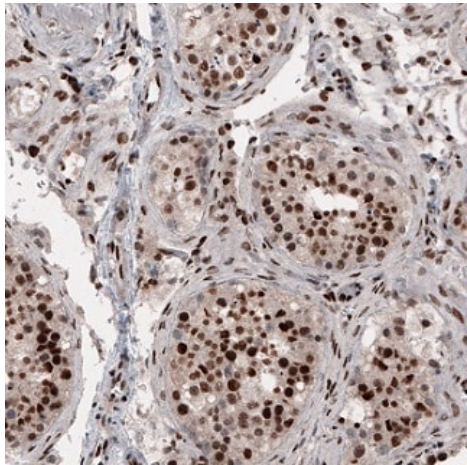
Immunohistochemical analysis of formalin-fixed and paraffin-embedded Human prostate tissue labeling METTL14 with ab220030 at 1/1000 dilution, showing strong nuclear positivity in glandular cells and in smooth muscle.

Immunohistochemistry (Formalin/PFA-fixed paraffin-embedded sections) - Anti-METTL14 antibody
[CL4252] (ab220030)



Immunohistochemical analysis of formalin-fixed and paraffin-embedded Human endometrium tissue labeling METTL14 with ab220030 at 1/1000 dilution, showing strong nuclear immunoreactivity in glandular cells and in stroma.

Immunohistochemistry (Formalin/PFA-fixed paraffin-embedded sections) - Anti-METTL14 antibody
[CL4252] (ab220030)



Immunohistochemical analysis of formalin-fixed and paraffin-embedded Human testis tissue labeling METTL14 with ab220030 at 1/1000 dilution, showing strong nuclear positivity in cells in seminiferous tubes.

Immunohistochemistry (Formalin/PFA-fixed paraffin-embedded sections) - Anti-METTL14 antibody [CL4252] (ab220030)

Please note: All products are "FOR RESEARCH USE ONLY. NOT FOR USE IN DIAGNOSTIC PROCEDURES"

Our Abpromise to you: Quality guaranteed and expert technical support

- Replacement or refund for products not performing as stated on the datasheet
- Valid for 12 months from date of delivery
- Response to your inquiry within 24 hours
- We provide support in Chinese, English, French, German, Japanese and Spanish
- Extensive multi-media technical resources to help you
- We investigate all quality concerns to ensure our products perform to the highest standards

If the product does not perform as described on this datasheet, we will offer a refund or replacement. For full details of the Abpromise, please visit <https://www.abcam.cn/abpromise> or contact our technical team.

Terms and conditions

- Guarantee only valid for products bought direct from Abcam or one of our authorized distributors