


Anti-Metabotropic Glutamate Receptor 5 antibody ab53090

★★★★★ [16 Abreviews](#) [16 References](#) [2 图像](#)

概述

产品名称	Anti-Metabotropic Glutamate Receptor 5抗体
描述	兔多克隆抗体to Metabotropic Glutamate Receptor 5
宿主	Rabbit
经测试应用	适用于: IHC-P, WB
种属反应性	与反应: Mouse, Human 预测可用于: Rat 
免疫原	N-terminal synthetic peptide derived from human Metabotropic Glutamate Receptor 5.
阳性对照	WB: Mouse brain extracts. IHC-P: Human brain tissue.
常规说明	<p>The Life Science industry has been in the grips of a reproducibility crisis for a number of years. Abcam is leading the way in addressing this with our range of recombinant monoclonal antibodies and knockout edited cell lines for gold-standard validation. Please check that this product meets your needs before purchasing.</p> <p>If you have any questions, special requirements or concerns, please send us an inquiry and/or contact our Support team ahead of purchase. Recommended alternatives for this product can be found below, along with publications, customer reviews and Q&As</p>

性能

形式	Liquid
存放说明	Shipped at 4°C. Store at -20°C. Stable for 12 months at -20°C.
存储溶液	pH: 7.40 Preservative: 0.02% Sodium azide Constituents: 50% Glycerol (glycerin, glycerine), 0.87% Sodium chloride, PBS
纯度	Immunogen affinity purified
纯化说明	ab53090 was affinity purified from rabbit antiserum by affinity chromatography using epitope specific immunogen.
克隆	多克隆
同种型	IgG

The Abpromise guarantee **Abpromise™**承诺保证使用ab53090于以下的经测试应用

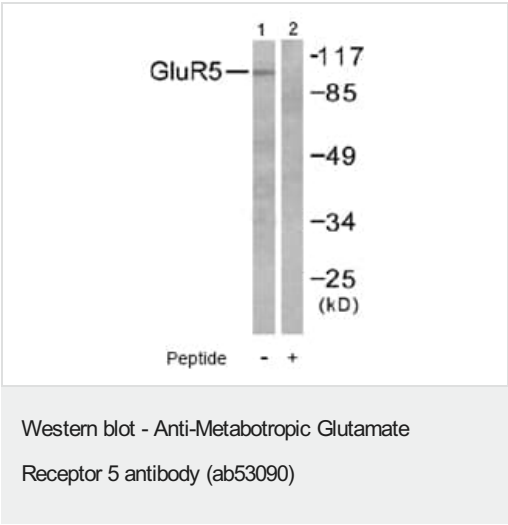
“应用说明”部分 下显示的仅为推荐的起始稀释度;实际最佳的稀释度/浓度应由使用者检定。

应用	Ab评论	说明
IHC-P	★★★★☆ (8)	1/50 - 1/100.
WB	★★★☆☆ (1)	1/500 - 1/1000. Predicted molecular weight: 132 kDa.

靶标

功能	G-protein coupled receptor for glutamate. Ligand binding causes a conformation change that triggers signaling via guanine nucleotide-binding proteins (G proteins) and modulates the activity of down-stream effectors. Signaling activates a phosphatidylinositol-calcium second messenger system and generates a calcium-activated chloride current. Plays an important role in the regulation of synaptic plasticity and the modulation of the neural network activity.
序列相似性	Belongs to the G-protein coupled receptor 3 family.
细胞定位	Cell membrane.

图片



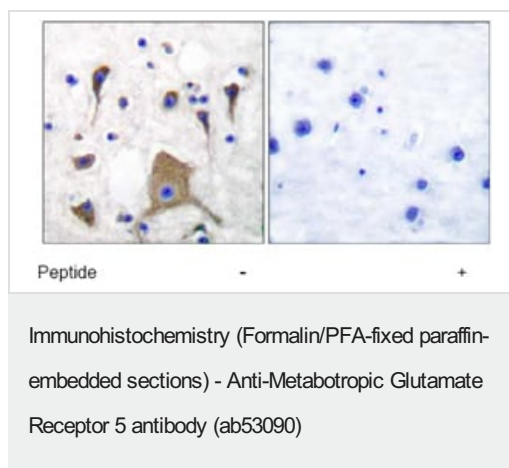
All lanes : Anti-Metabotropic Glutamate Receptor 5 antibody (ab53090) at 1/300 dilution

Lane 1 : Mouse brain extracts

Lane 2 : Mouse brain extracts with blocking peptide

Predicted band size: 132 kDa

Observed band size: 100 kDa



Immunohistochemical analysis of paraffin embedded human brain tissue using ab53090 at 1/50 dilution, in the presence (right) and absence (left) of blocking peptide.

Please note: All products are "FOR RESEARCH USE ONLY. NOT FOR USE IN DIAGNOSTIC PROCEDURES"

Our Abpromise to you: Quality guaranteed and expert technical support

- Replacement or refund for products not performing as stated on the datasheet
- Valid for 12 months from date of delivery
- Response to your inquiry within 24 hours
- We provide support in Chinese, English, French, German, Japanese and Spanish
- Extensive multi-media technical resources to help you
- We investigate all quality concerns to ensure our products perform to the highest standards

If the product does not perform as described on this datasheet, we will offer a refund or replacement. For full details of the Abpromise, please visit <https://www.abcam.cn/abpromise> or contact our technical team.

Terms and conditions

- Guarantee only valid for products bought direct from Abcam or one of our authorized distributors