

Anti-Met (c-Met) antibody ab137654

[4 References](#) [3 图像](#)

概述

产品名称	Anti-Met (c-Met)抗体
描述	兔多克隆抗体to Met (c-Met)
宿主	Rabbit
经测试应用	适用于: IHC-P, WB
种属反应性	与反应: Human
免疫原	Synthetic peptide, corresponding to a region witin C terminal amino acids 1329-1390 of Human Met (c-Met).
常规说明	<p>The Life Science industry has been in the grips of a reproducibility crisis for a number of years. Abcam is leading the way in addressing this with our range of recombinant monoclonal antibodies and knockout edited cell lines for gold-standard validation. Please check that this product meets your needs before purchasing.</p> <p>If you have any questions, special requirements or concerns, please send us an inquiry and/or contact our Support team ahead of purchase. Recommended alternatives for this product can be found below, along with publications, customer reviews and Q&As</p>

性能

形式	Liquid
存放说明	Shipped at 4°C. Upon delivery aliquot. Store at -20°C or -80°C. Avoid freeze / thaw cycle.
存储溶液	pH: 7.00 Preservative: 0.025% Proclin 300 Constituents: 79% PBS, 20% Glycerol (glycerin, glycerine)
纯度	Immunogen affinity purified
克隆	多克隆
同种型	IgG

应用

The Abpromise guarantee **Abpromise™**承诺保证使用ab137654于以下的经测试应用

“应用说明”部分 下显示的仅为推荐的起始稀释度;实际最佳的稀释度/浓度应由使用者检定。

应用	Ab评论	说明
IHC-P		1/100 - 1/1000. Perform heat mediated antigen retrieval before commencing with IHC staining protocol. Suggested antigen retrieval using heat mediated 10mM citrate buffer (pH6.0) or Tris-EDTA buffer (pH8.0).
WB		1/500 - 1/3000. Predicted molecular weight: 158 kDa.

靶标

功能

Receptor for hepatocyte growth factor and scatter factor. Has a tyrosine-protein kinase activity. Functions in cell proliferation, scattering, morphogenesis and survival.

疾病相关

Note=Activation of MET after rearrangement with the TPR gene produces an oncogenic protein.

Note=Defects in MET may be associated with gastric cancer.

Defects in MET are a cause of hepatocellular carcinoma (HCC) [MIM:114550].

Defects in MET are a cause of renal cell carcinoma papillary (RCCP) [MIM:605074]. It is a subtype of renal cell carcinoma tending to show a tubulo-papillary architecture formed by numerous, irregular, finger-like projections of connective tissue. Renal cell carcinoma is a heterogeneous group of sporadic or hereditary carcinoma derived from cells of the proximal renal tubular epithelium. It is subclassified into common renal cell carcinoma (clear cell, non-papillary carcinoma), papillary renal cell carcinoma, chromophobe renal cell carcinoma, collecting duct carcinoma with medullary carcinoma of the kidney, and unclassified renal cell carcinoma.

Note=A common allele in the promoter region of the MET shows genetic association with susceptibility to autism in some families. Functional assays indicate a decrease in MET promoter activity and altered binding of specific transcription factor complexes.

Note=MET activating mutations may be involved in the development of a highly malignant, metastatic syndrome known as cancer of unknown primary origin (CUP) or primary occult malignancy. Systemic neoplastic spread is generally a late event in cancer progression. However, in some instances, distant dissemination arises at a very early stage, so that metastases reach clinical relevance before primary lesions. Sometimes, the primary lesions cannot be identified in spite of the progresses in the diagnosis of malignancies.

序列相似性

Belongs to the protein kinase superfamily. Tyr protein kinase family.

Contains 3 IPT/TIG domains.

Contains 1 protein kinase domain.

Contains 1 Sema domain.

结构域

The kinase domain is involved in SPSB1 binding.

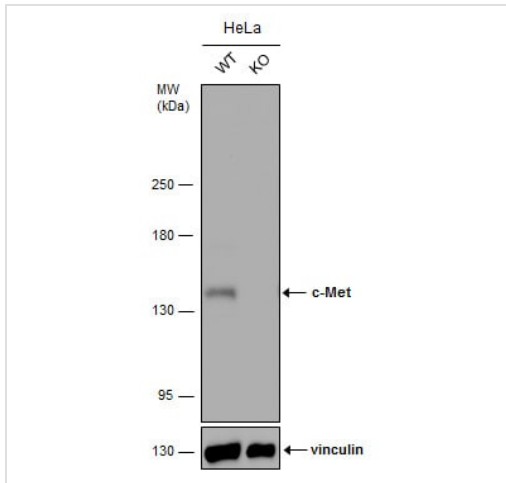
翻译后修饰

Dephosphorylated by PTPRJ at Tyr-1349 and Tyr-1365.

细胞定位

Membrane.

图片



Western blot - Anti-Met (c-Met) antibody - C-terminal (ab137654)

All lanes : Anti-Met (c-Met) antibody (ab137654) at 1/1000 dilution

Lane 1 : WT HeLa cell extract

Lane 2 : Met (c-Met) Knockout HeLa cell extracts

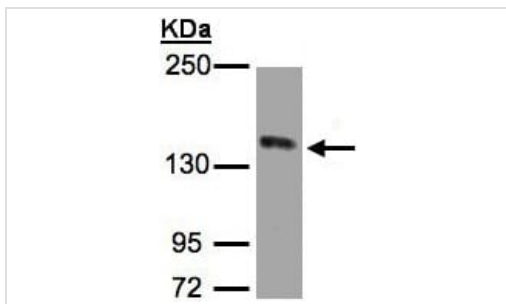
Lysates/proteins at 30 µg per lane.

Secondary

All lanes : HRP-conjugated anti-rabbit IgG

Predicted band size: 158 kDa

Observed band size: 70 kDa

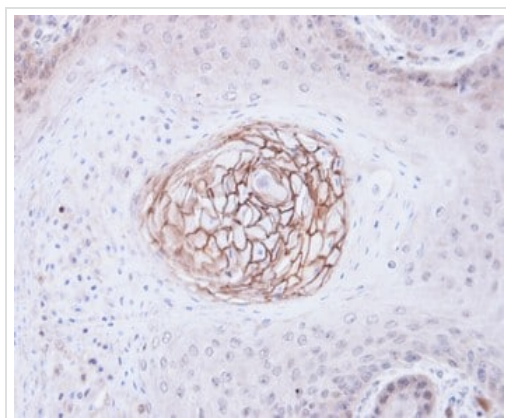


Western blot - Anti-Met (c-Met) antibody (ab137654)

Anti-Met (c-Met) antibody (ab137654) at 1/1000 dilution + HeLa S3 whole cell lysate at 30 µg

Predicted band size: 158 kDa

5% SDS PAGE



Immunohistochemistry (Formalin/PFA-fixed paraffin-embedded sections) - Anti-Met (c-Met) antibody (ab137654)

Immunohistochemical analysis of paraffin embedded Cal27 xenograft, labelling Met (c-Met) with ab137654 at 1/100 dilution.

Our Abpromise to you: Quality guaranteed and expert technical support

- Replacement or refund for products not performing as stated on the datasheet
- Valid for 12 months from date of delivery
- Response to your inquiry within 24 hours

- We provide support in Chinese, English, French, German, Japanese and Spanish
- Extensive multi-media technical resources to help you
- We investigate all quality concerns to ensure our products perform to the highest standards

If the product does not perform as described on this datasheet, we will offer a refund or replacement. For full details of the Abpromise, please visit <https://www.abcam.cn/abpromise> or contact our technical team.

Terms and conditions

- Guarantee only valid for products bought direct from Abcam or one of our authorized distributors