


Anti-Mesothelin antibody [SP74] ab93620

重组 RabMAb

★★★★★ [2 Abreviews](#) [3 References](#) [4 图像](#)

概述

产品名称	Anti-Mesothelin抗体[SP74]
描述	兔单克隆抗体[SP74] to Mesothelin
宿主	Rabbit
经测试应用	适用于: WB, IHC-P
种属反应性	与反应: Human 预测可用于: Pig 
免疫原	Synthetic peptide within Human Mesothelin aa 550 to the C-terminus (C terminal). The exact sequence is proprietary. Database link: Q13421
阳性对照	IHC-P: Human Mesothelioma tissue. WB: BxPC-3, HeLa, PC3 and A549 cell lysate.
常规说明	This product is FOR RESEARCH USE ONLY. For commercial use, please contact partnerships@abcam.com.

性能

形式	Liquid
存放说明	Shipped at 4°C. Upon delivery aliquot and store at -20°C. Avoid repeated freeze / thaw cycles.
存储溶液	pH: 7.60 Preservative: 0.1% Sodium azide Constituents: PBS, 1% BSA
纯度	Protein A/G purified
纯化说明	Purified from TCS by protein A/G.
克隆	单克隆
克隆编号	SP74
同种型	IgG

应用

The Abpromise guarantee**Abpromise™**承诺保证使用ab93620于以下的经测试应用

“应用说明”部分 下显示的仅为推荐的起始稀释度;实际最佳的稀释度/浓度应由使用者检定。

应用	Ab评论	说明
WB		Use a concentration of 0.322 µg/ml. Predicted molecular weight: 69 kDa.
IHC-P	★★★★★ (2)	1/100. Perform heat mediated antigen retrieval with citrate buffer pH 6 before commencing with IHC staining protocol.

靶标**功能**

Membrane-anchored forms may play a role in cellular adhesion.
 Megakaryocyte-potentiating factor (MPF) potentiates megakaryocyte colony formation in vitro.

组织特异性

Expressed in lung. Expressed at low levels in heart, placenta and kidney. Expressed in mesothelial cells. Highly expressed in mesotheliomas, ovarian cancers, and some squamous cell carcinomas (at protein level).

疾病相关

Note=Antibodies against MSLN are detected in patients with mesothelioma and ovarian cancer.

序列相似性

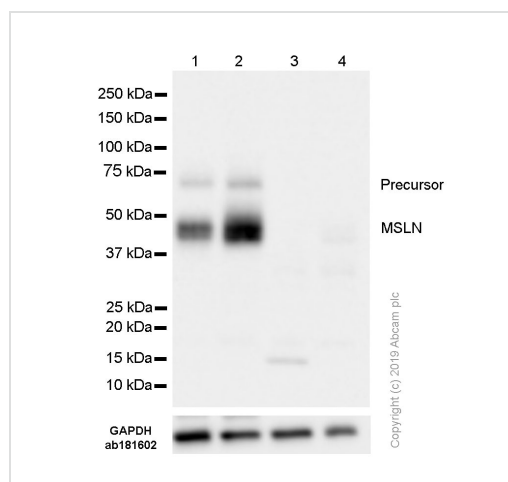
Belongs to the mesothelin family.

翻译后修饰

Both MPF and the cleaved form of mesothelin are N-glycosylated.
 Proteolytically cleaved by a furin-like convertase to generate megakaryocyte-potentiating factor (MPF), and the cleaved form of mesothelin.

细胞定位

Secreted and Cell membrane. Golgi apparatus.

图片

Western blot - Anti-Mesothelin antibody [SP74] (ab93620)

All lanes : Anti-Mesothelin antibody [SP74] (ab93620) at 0.322 µg/ml

Lane 1 : HeLa (Human cervix adenocarcinoma epithelial cell) cell lysate

Lane 2 : BxPC-3 (Human pancreas adenocarcinoma epithelial cell) cell lysate

Lane 3 : PC3 (Human prostate adenocarcinoma epithelial cell) cell lysate

Lane 4 : A549 (Human lung carcinoma epithelial cell) cell lysate

Lysates/proteins at 20 µg per lane.

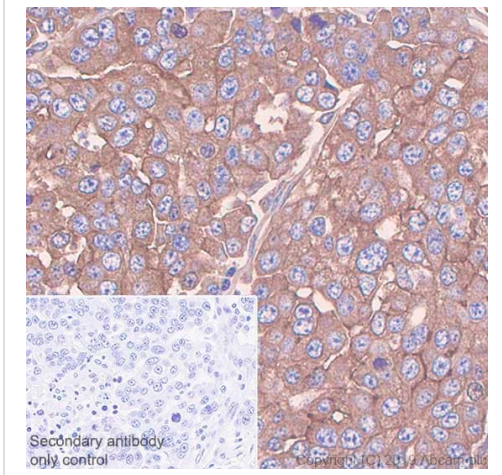
Secondary

All lanes : Goat Anti-Rabbit IgG H&L (HRP) (**ab97051**) at 0.05 µg/ml

Predicted band size: 69 kDa

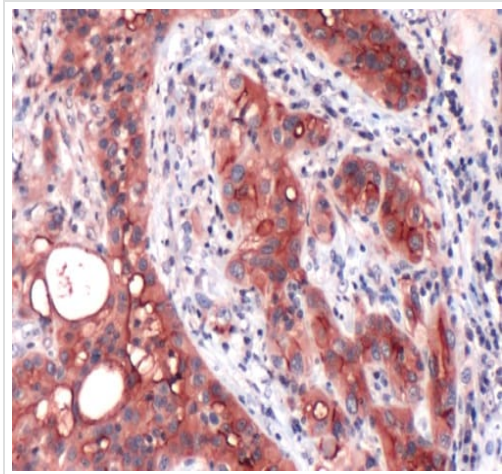
Observed band size: 49,69 kDa

Blocking/Diluting buffer and concentration: 5% NFDM /TBST



Immunohistochemistry (Formalin/PFA-fixed paraffin-embedded sections) analysis of Human mesothelioma tissue sections labeling Mesothelin with Purified ab93620 at 1/100 dilution (1.4 µg/ml). Heat mediated antigen retrieval was performed Heat mediated antigen retrieval with sodium citrate buffer (pH 6.0, epitope retrieval solution 1) for 20mins. Rabbit specific IHC polymer detection kit HRP/DAB (**ab209101**) was used as the secondary antibody. Negative control: PBS instead of the primary antibody. Hematoxylin was used as a counterstain.

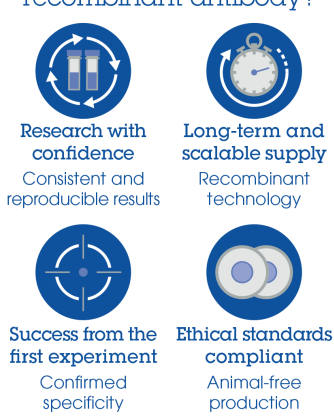
Immunohistochemistry (Formalin/PFA-fixed paraffin-embedded sections) - Anti-Mesothelin antibody [SP74] (ab93620)



Human Mesothelioma stained with Anti-Mesothelin antibody [SP74] (ab93620)

Immunohistochemistry (Formalin/PFA-fixed paraffin-embedded sections) - Anti-Mesothelin antibody [SP74] (ab93620)

Why choose a recombinant antibody?



Research with confidence
Consistent and reproducible results

Long-term and scalable supply
Recombinant technology

Success from the first experiment
Confirmed specificity

Ethical standards compliant
Animal-free production

Anti-Mesothelin antibody [SP74] (ab93620)

Please note: All products are "FOR RESEARCH USE ONLY. NOT FOR USE IN DIAGNOSTIC PROCEDURES"

Our Abpromise to you: Quality guaranteed and expert technical support

- Replacement or refund for products not performing as stated on the datasheet
- Valid for 12 months from date of delivery
- Response to your inquiry within 24 hours
- We provide support in Chinese, English, French, German, Japanese and Spanish
- Extensive multi-media technical resources to help you
- We investigate all quality concerns to ensure our products perform to the highest standards

If the product does not perform as described on this datasheet, we will offer a refund or replacement. For full details of the Abpromise, please visit <https://www.abcam.cn/abpromise> or contact our technical team.

Terms and conditions

- Guarantee only valid for products bought direct from Abcam or one of our authorized distributors