

# Anti-Mesothelin antibody ab96869

**2 References**   [2 图像](#)

### 概述

产品名称	Anti-Mesothelin抗体
描述	兔多克隆抗体to Mesothelin
宿主	Rabbit
经测试应用	适用于: WB, IHC-P
种属反应性	与反应: Human
免疫原	Recombinant protein fragment corresponding to a region within amino acids 44 and 438 of Human Mesothelin (NP_037536).
阳性对照	WB: 293T cell lysate IHC-P: serous OVCA
常规说明	<p>The Life Science industry has been in the grips of a reproducibility crisis for a number of years. Abcam is leading the way in addressing this with our range of recombinant monoclonal antibodies and knockout edited cell lines for gold-standard validation. Please check that this product meets your needs before purchasing.</p> <p>If you have any questions, special requirements or concerns, please send us an inquiry and/or contact our Support team ahead of purchase. Recommended alternatives for this product can be found below, along with publications, customer reviews and Q&amp;As</p>

### 性能

形式	Liquid
存放说明	Shipped at 4°C. Upon delivery aliquot. Store at -20°C or -80°C. Avoid freeze / thaw cycle.
存储溶液	<p>pH: 7.00</p> <p>Preservative: 0.01% Thimerosal (merthiolate)</p> <p>Constituents: 1.21% Tris, 0.75% Glycine, 10% Glycerol (glycerin, glycerine)</p>
纯度	Immunogen affinity purified
克隆	多克隆
同种型	IgG

### 应用

The Abpromise guarantee

**Abpromise™** 承诺保证使用ab96869于以下的经测试应用

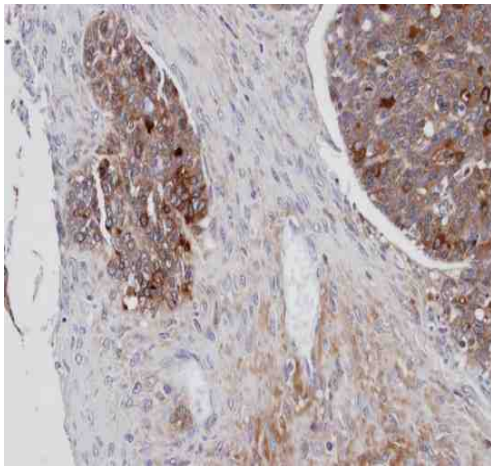
“应用说明”部分 下显示的仅为推荐的起始稀释度;实际最佳的稀释度/浓度应由使用者检定。

应用	Ab评论	说明
WB		1/500 - 1/3000. Predicted molecular weight: 69 kDa.
IHC-P		1/100.

## 靶标

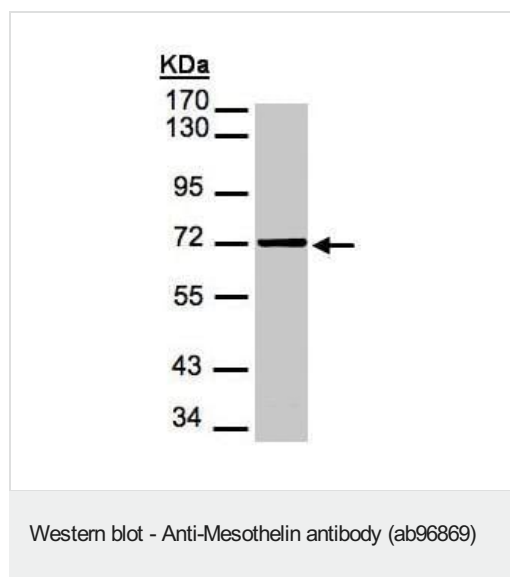
功能	Membrane-anchored forms may play a role in cellular adhesion. Megakaryocyte-potentiating factor (MPF) potentiates megakaryocyte colony formation in vitro.
组织特异性	Expressed in lung. Expressed at low levels in heart, placenta and kidney. Expressed in mesothelial cells. Highly expressed in mesotheliomas, ovarian cancers, and some squamous cell carcinomas (at protein level).
疾病相关	Note=Antibodies against MSLN are detected in patients with mesothelioma and ovarian cancer.
序列相似性	Belongs to the mesothelin family.
翻译后修饰	Both MPF and the cleaved form of mesothelin are N-glycosylated. Proteolytically cleaved by a furin-like convertase to generate megakaryocyte-potentiating factor (MPF), and the cleaved form of mesothelin.
细胞定位	Secreted and Cell membrane. Golgi apparatus.

## 图片



Immunohistochemical analysis of Mesothelin in paraffin embedded serous OVCA, using ab96869 at a 1/100 dilution.

Immunohistochemistry (Formalin/PFA-fixed paraffin-embedded sections) - Anti-Mesothelin antibody (ab96869)



Anti-Mesothelin antibody (ab96869) at 1/1000 dilution + 293T whole cell lysate at 30 µg

**Predicted band size:** 69 kDa

7.5% SDS PAGE

**Please note:** All products are "FOR RESEARCH USE ONLY. NOT FOR USE IN DIAGNOSTIC PROCEDURES"

### Our Abpromise to you: Quality guaranteed and expert technical support

---

- Replacement or refund for products not performing as stated on the datasheet
- Valid for 12 months from date of delivery
- Response to your inquiry within 24 hours
- We provide support in Chinese, English, French, German, Japanese and Spanish
- Extensive multi-media technical resources to help you
- We investigate all quality concerns to ensure our products perform to the highest standards

If the product does not perform as described on this datasheet, we will offer a refund or replacement. For full details of the Abpromise, please visit <https://www.abcam.cn/abpromise> or contact our technical team.

### Terms and conditions

---

- Guarantee only valid for products bought direct from Abcam or one of our authorized distributors