

# Anti-Melanoma gp100 antibody [EPR4864] ab137062

**重组** RabMAb

★★★★★ **1 Abreviews** **10 References** **9 图像**

### 概述

<b>产品名称</b>	Anti-Melanoma gp100抗体[EPR4864]
<b>描述</b>	兔单克隆抗体[EPR4864] to Melanoma gp100
<b>宿主</b>	Rabbit
<b>经测试应用</b>	<b>适用于:</b> WB, IHC-P <b>不适用于:</b> ICC/IF or IP
<b>种属反应性</b>	<b>与反应:</b> Human
<b>免疫原</b>	Synthetic peptide. This information is proprietary to Abcam and/or its suppliers.
<b>阳性对照</b>	Human melanoma tissue lysate; Human melanoma tissue ;Placenta tissue; Normal skin tissue;Normal kidney tissue.
<b>常规说明</b>	<p>This product is a recombinant monoclonal antibody, which offers several advantages including:</p> <ul style="list-style-type: none"> <li>- High batch-to-batch consistency and reproducibility</li> <li>- Improved sensitivity and specificity</li> <li>- Long-term security of supply</li> <li>- Animal-free production</li> </ul> <p>For more information <a href="#">see here</a>.</p> <p>Our RabMAb<sup>®</sup> technology is a patented hybridoma-based technology for making rabbit monoclonal antibodies. For details on our patents, please refer to <a href="#">RabMAb<sup>®</sup> patents</a>.</p> <p>Mouse, Rat: We have preliminary internal testing data to indicate this antibody may not react with these species. Please contact us for more information.</p>

### 性能

<b>形式</b>	Liquid
<b>存放说明</b>	Shipped at 4°C. Store at -20°C.
<b>存储溶液</b>	pH: 7.2 Preservative: 0.01% Sodium azide Constituents: 40% Glycerol, 0.05% BSA, 59% PBS
<b>纯度</b>	Protein A purified
<b>克隆</b>	单克隆

克隆编号                      EPR4864  
同种型                         IgG

## 应用

**The Abpromise guarantee**         **Abpromise™** 承诺保证使用 ab137062 于以下的经测试应用

“应用说明”部分 下显示的仅为推荐的起始稀释度；实际最佳的稀释度/浓度应由使用者检定。

应用	Ab 评论	说明
WB		1/1000 - 1/10000. Detects a band of approximately 100, 26 kDa (predicted molecular weight: 70 kDa). <b>For unpurified, use 1/1000 - 1/2000.</b>
IHC-P		1/400. Perform heat mediated antigen retrieval before commencing with IHC staining protocol. <b>For unpurified, use 1/50 - 1/100.</b> See <b>IHC antigen retrieval protocols</b> .

应用说明                               Is unsuitable for ICC/IF or IP.

## 靶标

**功能**                                       Plays a central role in the biogenesis of melanosomes. Involved in the maturation of melanosomes from stage I to II. The transition from stage I melanosomes to stage II melanosomes involves an elongation of the vesicle, and the appearance within of distinct fibrillar structures. Release of the soluble form, ME20-S, could protect tumor cells from antibody mediated immunity.

**组织特异性**                               Preferentially expressed in melanomas. Some expression was found in dysplastic nevi. Not found in normal tissues nor in carcinomas. Normally expressed at low levels in quiescent adult melanocytes but overexpressed by proliferating neonatal melanocytes and during tumor growth.

**序列相似性**                               Belongs to the PMEL/NMB family.  
Contains 1 PKD domain.

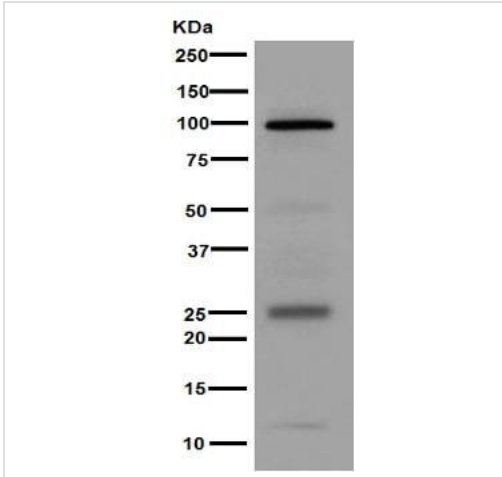
**结构域**                                       The RPT domain is essential for the generation of the fibrillar matrix of melanosomes. The luminal domain is necessary for correct processing and trafficking to melanosomes.

**翻译后修饰**                               A small amount of P1/P100 (major form) undergoes glycosylation to yield P2/P120 (minor form). P2 is cleaved by a furin-like proprotein convertase (PC) in a pH-dependent manner in a post-Golgi, prelysosomal compartment into two disulfide-linked subunits: a large luminal subunit, M-alpha/ME20-S, and an integral membrane subunit, M-beta. Despite cleavage, only a small fraction of M-alpha is secreted, whereas most M-alpha and M-beta remain associated with each other intracellularly. M-alpha is further processed to M-alpha N and M-alpha C. M-alpha C further undergoes processing to yield M-alpha C1 and M-alpha C3 (M-alpha C2 in the case of PMEL17-is or PMEL17-ls). Formation of intraluminal fibrils in the melanosomes requires the formation of M-alpha that becomes incorporated into the fibrils. Stage II melanosomes harbor only Golgi-modified Pmel17 fragments that are derived from M-alpha and that bear sialylated O-linked oligosaccharides.  
N-glycosylated. O-glycosylated; contains sialic acid.

**细胞定位**                                 Secreted and Endoplasmic reticulum membrane. Golgi apparatus. Melanosome. Endosome > multivesicular body. Identified by mass spectrometry in melanosome fractions from stage I to

stage IV. Localizes predominantly to intraluminal vesicles (ILVs) within multivesicular bodies. Associates with ILVs found within the lumen of premelanosomes and melanosomes and particularly in compartments that serve as precursors to the striated stage II premelanosomes.

## 图片



Western blot - Anti-Melanoma gp100 antibody [EPR4864] (ab137062)

Anti-Melanoma gp100 antibody [EPR4864] (ab137062) at 1/10000 dilution (purified) + Human melanoma tissue lysate at 10  $\mu$ g

### Secondary

HRP goat anti-rabbit (H+L) at 1/1000 dilution

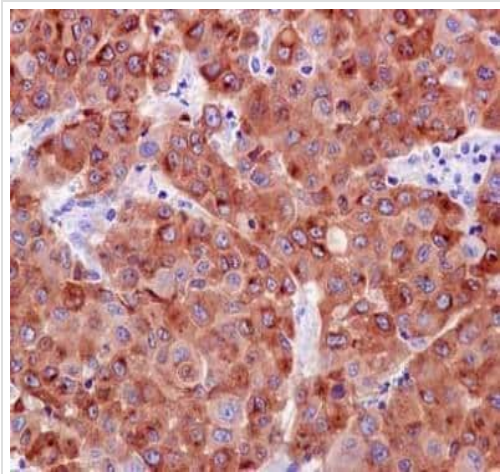
**Predicted band size:** 70 kDa

**Observed band size:** 100 kDa

**Additional bands at:** 26 kDa. We are unsure as to the identity of these extra bands.

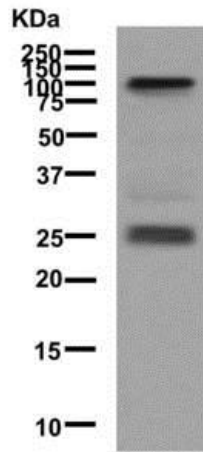
Blocking buffer: 5% NFDm/TBST

Dilution buffer: 5% NFDm/TBST



Immunohistochemistry (Formalin/PFA-fixed paraffin-embedded sections) - Anti-Melanoma gp100 antibody [EPR4864] (ab137062)

Immunohistochemical staining of paraffin embedded human melanoma with purified ab137062 at a working dilution of 1 in 400. The secondary antibody used is a HRP polymer for rabbit IgG. The sample is counter-stained with hematoxylin. Antigen retrieval was performed using Tris-EDTA buffer, pH 9.0.



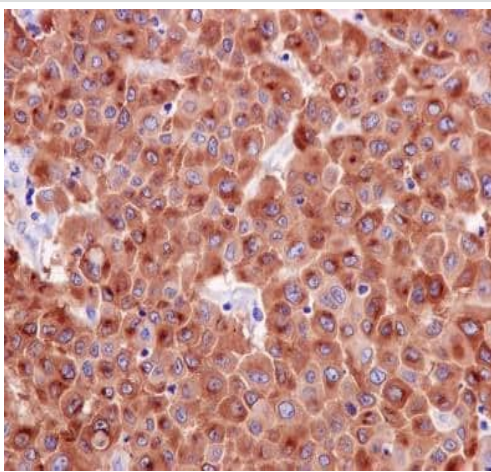
Western blot - Anti-Melanoma gp100 antibody  
[EPR4864] (ab137062)

Anti-Melanoma gp100 antibody [EPR4864] (ab137062) at 1/1000 dilution (unpurified) + Human melanoma tissue lysate at 10 µg

**Secondary**

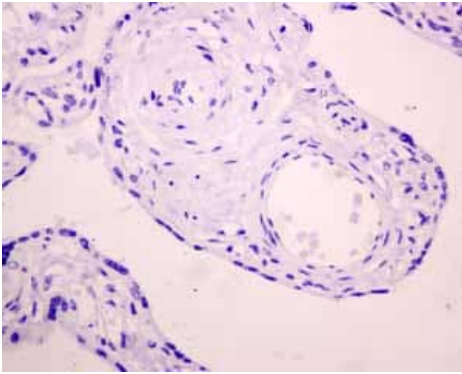
HRP labelled Goat anti-Rabbit IgG at 1/2000 dilution

**Predicted band size:** 70 kDa



Immunohistochemistry (Formalin/PFA-fixed paraffin-embedded sections) - Anti-Melanoma gp100 antibody [EPR4864] (ab137062)

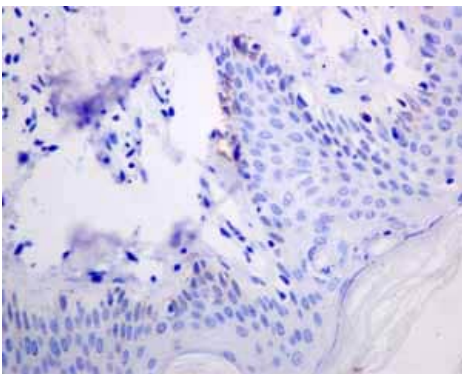
Immunohistochemical staining of paraffin embedded human melanoma with unpurified ab137062 at a working dilution of 1 in 50. The secondary antibody used is a HRP polymer for rabbit IgG. The sample is counter-stained with hematoxylin. Antigen retrieval was performed using Tris-EDTA buffer, pH 9.0.



Immunohistochemical analysis using unpurified ab137062 showing negative staining in placenta tissue.

Perform heat mediated antigen retrieval before commencing with IHC staining protocol.

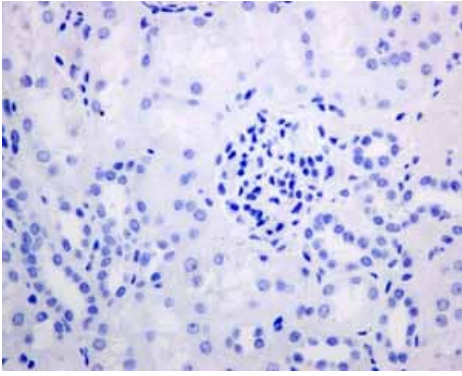
Immunohistochemistry (Formalin/PFA-fixed paraffin-embedded sections) - Anti-Melanoma gp100 antibody [EPR4864] (ab137062)



Immunohistochemical analysis using unpurified ab137062 showing negative staining in normal skin tissue.

Perform heat mediated antigen retrieval before commencing with IHC staining protocol.

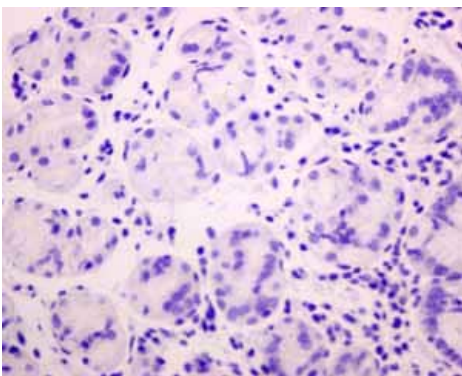
Immunohistochemistry (Formalin/PFA-fixed paraffin-embedded sections) - Anti-Melanoma gp100 antibody [EPR4864] (ab137062)



Immunohistochemistry (Formalin/PFA-fixed paraffin-embedded sections) - Anti-Melanoma gp100 antibody [EPR4864] (ab137062)

Immunohistochemical analysis using unpurified ab137062 showing negative staining in normal kidney tissue.

Perform heat mediated antigen retrieval before commencing with IHC staining protocol.




Immunohistochemistry (Formalin/PFA-fixed paraffin-embedded sections) - Anti-Melanoma gp100 antibody [EPR4864] (ab137062)

Immunohistochemical analysis using unpurified ab137062 showing negative staining in normal stomach tissue.

Perform heat mediated antigen retrieval before commencing with IHC staining protocol.

### Why choose a recombinant antibody?

-  **Research with confidence**  
Consistent and reproducible results
-  **Long-term and scalable supply**  
Recombinant technology
-  **Success from the first experiment**  
Confirmed specificity
-  **Ethical standards compliant**  
Animal-free production

Anti-Melanoma gp100 antibody [EPR4864] (ab137062)

**Please note:** All products are "FOR RESEARCH USE ONLY. NOT FOR USE IN DIAGNOSTIC PROCEDURES"

## **Our Abpromise to you: Quality guaranteed and expert technical support**

---

- Replacement or refund for products not performing as stated on the datasheet
- Valid for 12 months from date of delivery
- Response to your inquiry within 24 hours
  
- We provide support in Chinese, English, French, German, Japanese and Spanish
- Extensive multi-media technical resources to help you
- We investigate all quality concerns to ensure our products perform to the highest standards

If the product does not perform as described on this datasheet, we will offer a refund or replacement. For full details of the Abpromise, please visit <https://www.abcam.cn/abpromise> or contact our technical team.

## **Terms and conditions**

---

- Guarantee only valid for products bought direct from Abcam or one of our authorized distributors