

### Anti-MEK4/MKK4 antibody [EP615Y] ab33912

敲除验证
重组
RabMAb

★★★★☆
1 Abreviews
8 References
3 图像

#### 概述

产品名称	Anti-MEK4/MKK4抗体[EP615Y]
描述	兔单克隆抗体[EP615Y] to MEK4/MKK4
宿主	Rabbit
经测试应用	<b>适用于:</b> WB <b>不适用于:</b> ICC/IF
种属反应性	<b>与反应:</b> Mouse, Rat, Human
免疫原	Synthetic peptide within Human MEK4/MKK4 (C terminal). The exact sequence is proprietary. Database link: <a href="#">P45985</a>
阳性对照	WB: NIH/3T3 and HeLa whole cell lysates. Rat brain tissue lysate.
常规说明	<p>This product is a recombinant monoclonal antibody, which offers several advantages including:</p> <ul style="list-style-type: none"> <li>- High batch-to-batch consistency and reproducibility</li> <li>- Improved sensitivity and specificity</li> <li>- Long-term security of supply</li> <li>- Animal-free production</li> </ul> <p>For more information <a href="#">see here</a>.</p> <p>Our RabMAb<sup>®</sup> technology is a patented hybridoma-based technology for making rabbit monoclonal antibodies. For details on our patents, please refer to <a href="#">RabMAb<sup>®</sup> patents</a>.</p>

#### 性能

形式	Liquid
存放说明	Shipped at 4°C. Store at +4°C short term (1-2 weeks). Upon delivery aliquot. Store at -20°C long term. Avoid freeze / thaw cycle.
存储溶液	pH: 7.20 Preservative: 0.01% Sodium azide Constituents: 59% PBS, 40% Glycerol (glycerin, glycerine), 0.05% BSA
纯度	Protein A purified
纯化说明	ab33912 is a purified IgG.
克隆	单克隆

克隆编号EP615Y

同种型IgG

应用

The Abpromise guarantee

Abpromise™承诺保证使用ab33912于以下的经测试应用

“应用说明”部分 下显示的仅为推荐的起始稀释度;实际最佳的稀释度/浓度应由使用者检定。

应用	Ab评论	说明
WB	★★★★☆ (1)	1/1000. Predicted molecular weight: 44 kDa.

应用说明

Is unsuitable for ICC/IF.

靶标

功能

Dual specificity kinase that activates the JUN kinases MAPK8 (JNK1) and MAPK9 (JNK2) as well as MAPK14 (p38) but not MAPK1 (ERK2) or MAPK3 (ERK1).

组织特异性

Abundant expression is seen in the skeletal muscle. It is also widely expressed in other tissues.

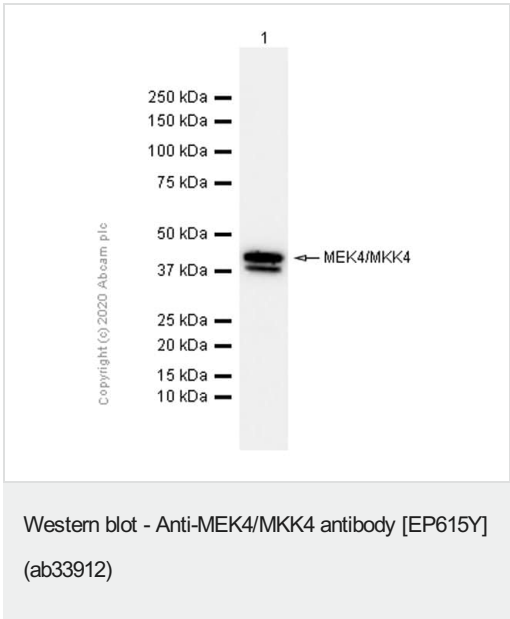
序列相似性

Belongs to the protein kinase superfamily. STE Ser/Thr protein kinase family. MAP kinase kinase subfamily.  
Contains 1 protein kinase domain.

翻译后修饰

Activated by phosphorylation on Ser/Thr by MAP kinase kinase kinases.

图片

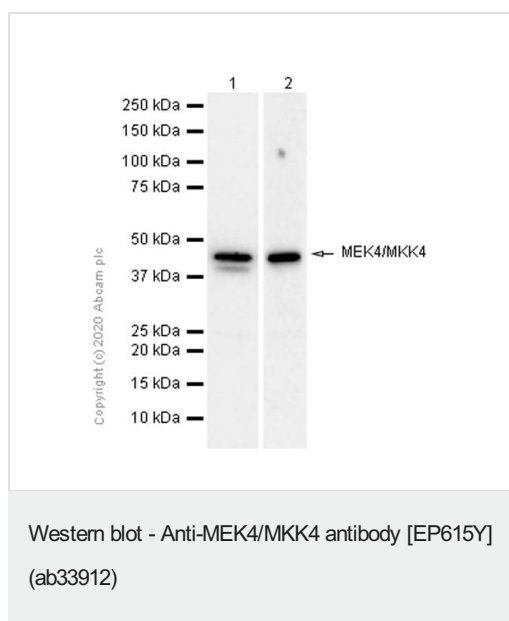


Anti-MEK4/MKK4 antibody [EP615Y] (ab33912) at 1/1000 dilution  
(Purified) + Rat brain lysate at 15 µg

**Secondary**  
Goat Anti-Rabbit IgG H&L (HRP) ([ab97051](#)) at 1/20000 dilution

**Predicted band size:** 44 kDa  
**Observed band size:** 44 kDa

Blocking buffer: 5% NFDM/TBST



**All lanes :** Anti-MEK4/MKK4 antibody [EP615Y] (ab33912) at 1/4000 dilution (Purified)

**Lane 1 :** NIH/3T3 (Mouse embryonic fibroblast) whole cell lysate

**Lane 2 :** HeLa (Human cervix adenocarcinoma epithelial cell) whole cell lysate

Lysates/proteins at 15 µg per lane.

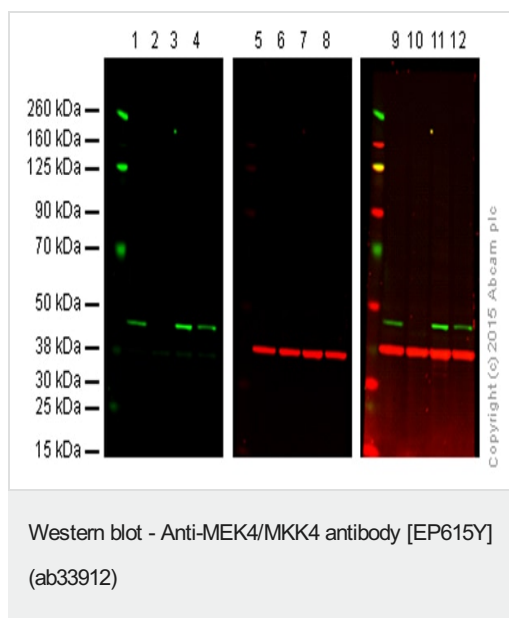
### Secondary

**All lanes :** Goat Anti-Rabbit IgG H&L (HRP) ([ab97051](#)) at 1/20000 dilution

**Predicted band size:** 44 kDa

**Observed band size:** 44 kDa

Blocking buffer: 5% NFDM/TBST



**Lanes 1, 5 and 9:** Wild-type HAP1 cell lysate (20 µg)

**Lanes 2, 6 and 10:** MEK4 knockout HAP1 cell lysate (20 µg)

**Lanes 3, 7 and 11:** HeLa cell lysate (20 µg)

**Lanes 4, 8 and 12:** A431 cell lysate (20 µg)

**Lanes 1, 2, 3 and 4:** Green signal from target - ab33912 observed at 44 kDa

**Lanes 5, 6, 7 and 8:** Red signal from loading control - [ab8245](#) observed at 37 kDa

**Lanes 9, 10, 11 and 12:** Merged (red and green) signal

ab33912 was shown to specifically react with MEK4 when MEK4 knockout samples were used. Wild-type and MEK4 knockout samples were subjected to SDS-PAGE. ab33912 and [ab8245](#) (loading control to GAPDH) were diluted 1/1000 and 1/2000 respectively and incubated overnight at 4°C. Blots were developed with Goat anti-Rabbit IgG H&L (IRDye® 800CW) preadsorbed ([ab216773](#)) and Goat anti-Mouse IgG H&L (IRDye® 680RD) preadsorbed ([ab216776](#)) secondary antibodies at 1/10 000 dilution for 1 h at room temperature before imaging.

### **Our Abpromise to you: Quality guaranteed and expert technical support**

---

- Replacement or refund for products not performing as stated on the datasheet
- Valid for 12 months from date of delivery
- Response to your inquiry within 24 hours
  
- We provide support in Chinese, English, French, German, Japanese and Spanish
- Extensive multi-media technical resources to help you
- We investigate all quality concerns to ensure our products perform to the highest standards

If the product does not perform as described on this datasheet, we will offer a refund or replacement. For full details of the Abpromise, please visit <https://www.abcam.cn/abpromise> or contact our technical team.

### **Terms and conditions**

---

- Guarantee only valid for products bought direct from Abcam or one of our authorized distributors