

Anti-MCT2 antibody - C-terminal ab198272

[2 References](#) [2 图像](#)

概述

产品名称	Anti-MCT2抗体- C-terminal
描述	兔多克隆抗体to MCT2 - C-terminal
宿主	Rabbit
经测试应用	适用于: WB, IHC-P
种属反应性	与反应: Human
免疫原	Synthetic peptide corresponding to Human MCT2 (C terminal). Database link: O60669
阳性对照	A549 cell lysate; Human ovarian cancer tissue.
常规说明	<p>The Life Science industry has been in the grips of a reproducibility crisis for a number of years. Abcam is leading the way in addressing this with our range of recombinant monoclonal antibodies and knockout edited cell lines for gold-standard validation. Please check that this product meets your needs before purchasing.</p> <p>If you have any questions, special requirements or concerns, please send us an inquiry and/or contact our Support team ahead of purchase. Recommended alternatives for this product can be found below, along with publications, customer reviews and Q&As</p>

性能

形式	Liquid
存放说明	Shipped at 4°C. Store at +4°C short term (1-2 weeks). Upon delivery aliquot. Store at -20°C long term. Avoid freeze / thaw cycle.
存储溶液	pH: 7.4 Preservative: 0.05% Sodium azide Constituents: 50% Glycerol (glycerin, glycerine), 49% PBS
纯度	Immunogen affinity purified
克隆	多克隆
同种型	IgG

应用

The Abpromise guarantee

Abpromise™ 承诺保证使用ab198272于以下的经测试应用

“应用说明”部分 下显示的仅为推荐的起始稀释度;实际最佳的稀释度/浓度应由使用者检定。

应用	Ab评论	说明
WB		1/1000 - 1/5000. Predicted molecular weight: 52 kDa.
IHC-P		1/50 - 1/200.

靶标

功能

Proton-linked monocarboxylate transporter. Catalyzes the rapid transport across the plasma membrane of many monocarboxylates such as lactate, pyruvate, branched-chain oxo acids derived from leucine, valine and isoleucine, and the ketone bodies acetoacetate, beta-hydroxybutyrate and acetate. MCT2 is a high affinity pyruvate transporter.

组织特异性

High expression in testis, moderate to low in spleen, heart, kidney, pancreas, skeletal muscle, brain and Leukocyte. Restricted expression in normal tissues, but widely expressed in cancer cells.

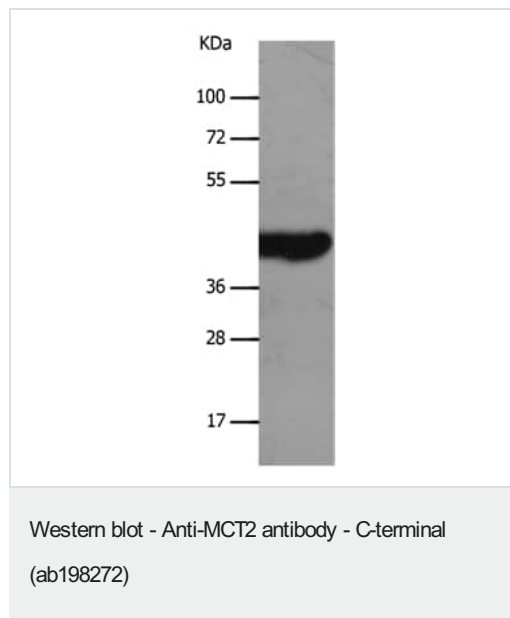
序列相似性

Belongs to the major facilitator superfamily. Monocarboxylate porter (TC 2.A.1.13) family.

细胞定位

Cell membrane.

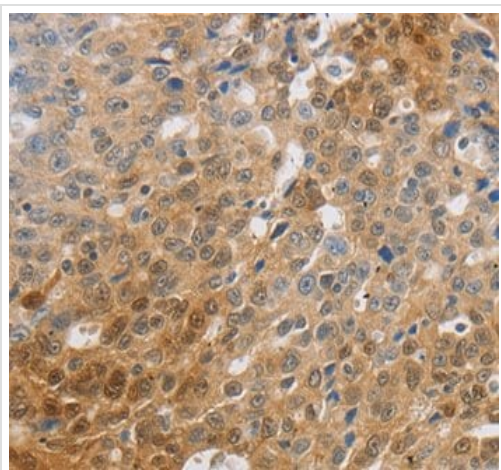
图片



Anti-MCT2 antibody - C-terminal (ab198272) at 1/1200 dilution + A549 cell lysate at 30 µg

Predicted band size: 52 kDa

Exposure time: 40 seconds



Immunohistochemistry (Formalin/PFA-fixed paraffin-embedded sections) - Anti-MCT2 antibody - C-terminal (ab198272)

Immunohistochemical analysis of paraffin-embedded Human ovarian cancer tissue labeling MCT2 with ab198272 at 1/70 dilution.

Please note: All products are "FOR RESEARCH USE ONLY. NOT FOR USE IN DIAGNOSTIC PROCEDURES"

Our Abpromise to you: Quality guaranteed and expert technical support

- Replacement or refund for products not performing as stated on the datasheet
- Valid for 12 months from date of delivery
- Response to your inquiry within 24 hours
- We provide support in Chinese, English, French, German, Japanese and Spanish
- Extensive multi-media technical resources to help you
- We investigate all quality concerns to ensure our products perform to the highest standards

If the product does not perform as described on this datasheet, we will offer a refund or replacement. For full details of the Abpromise, please visit <https://www.abcam.cn/abpromise> or contact our technical team.

Terms and conditions

- Guarantee only valid for products bought direct from Abcam or one of our authorized distributors