


Anti-MCT2 antibody ab129290

[3 References](#) [2 图像](#)

概述

产品名称	Anti-MCT2抗体
描述	山羊多克隆抗体to MCT2
宿主	Goat
经测试应用	适用于: WB, IHC-P
种属反应性	与反应: Human 预测可用于: Chimpanzee, Monkey, Gorilla, Common marmoset 
免疫原	Synthetic peptide: SNAQSVTSERETNI with a Cysteine residue linker, corresponding to C terminal amino acids 465-478 of Human MCT2 (NP_004722.2). Run BLAST with Run BLAST with
阳性对照	Human testis tissue; A549 lysate.
常规说明	<p>The Life Science industry has been in the grips of a reproducibility crisis for a number of years. Abcam is leading the way in addressing this with our range of recombinant monoclonal antibodies and knockout edited cell lines for gold-standard validation. Please check that this product meets your needs before purchasing.</p> <p>If you have any questions, special requirements or concerns, please send us an inquiry and/or contact our Support team ahead of purchase. Recommended alternatives for this product can be found below, along with publications, customer reviews and Q&As</p>

性能

形式	Liquid
存放说明	Shipped at 4°C. Upon delivery aliquot and store at -20°C. Avoid freeze / thaw cycles.
存储溶液	pH: 7.30 Preservative: 0.02% Sodium azide Constituents: 99% Tris buffered saline, 0.5% BSA
纯度	Immunogen affinity purified
克隆	多克隆
同种型	IgG

应用

The Abpromise guarantee

Abpromise™ 承诺保证使用 ab129290 于以下的经测试应用

“应用说明”部分 下显示的仅为推荐的起始稀释度;实际最佳的稀释度/浓度应由使用者检定。

应用	Ab评论	说明
WB		Use a concentration of 1 - 3 µg/ml. Predicted molecular weight: 52 kDa.
IHC-P		Use a concentration of 2.5 - 3.75 µg/ml. Perform heat mediated antigen retrieval with citrate buffer pH 6 before commencing with IHC staining protocol.

靶标

功能

Proton-linked monocarboxylate transporter. Catalyzes the rapid transport across the plasma membrane of many monocarboxylates such as lactate, pyruvate, branched-chain oxo acids derived from leucine, valine and isoleucine, and the ketone bodies acetoacetate, beta-hydroxybutyrate and acetate. MCT2 is a high affinity pyruvate transporter.

组织特异性

High expression in testis, moderate to low in spleen, heart, kidney, pancreas, skeletal muscle, brain and Leukocyte. Restricted expression in normal tissues, but widely expressed in cancer cells.

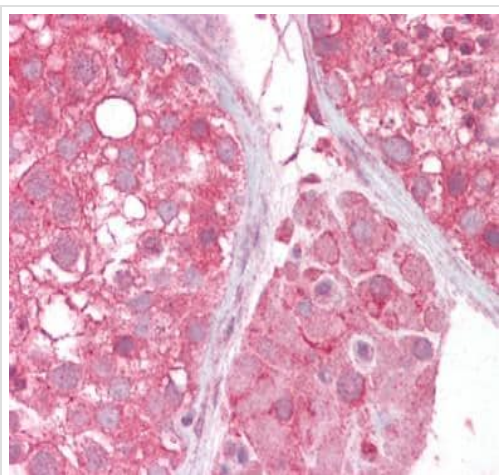
序列相似性

Belongs to the major facilitator superfamily. Monocarboxylate porter (TC 2.A.1.13) family.

细胞定位

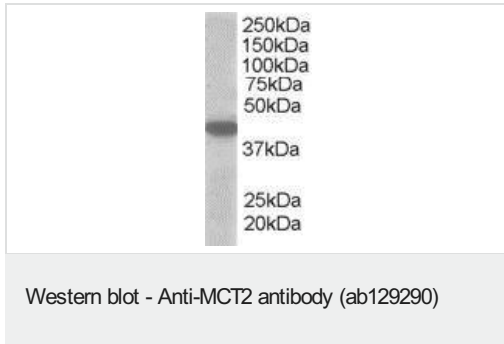
Cell membrane.

图片



ab129290, at 3.75µg/ml, staining MCT2 in Formalin-fixed, Paraffin-embedded Human testis tissue by Immunohistochemistry.

Immunohistochemistry (Formalin/PFA-fixed paraffin-embedded sections) - Anti-MCT2 antibody (ab129290)



Anti-MCT2 antibody (ab129290) at 1 µg/ml + A549 lysate in RIPA buffer at 35 µg

Developed using the ECL technique.

Predicted band size: 52 kDa

Please note: All products are "FOR RESEARCH USE ONLY. NOT FOR USE IN DIAGNOSTIC PROCEDURES"

Our Abpromise to you: Quality guaranteed and expert technical support

- Replacement or refund for products not performing as stated on the datasheet
- Valid for 12 months from date of delivery
- Response to your inquiry within 24 hours
- We provide support in Chinese, English, French, German, Japanese and Spanish
- Extensive multi-media technical resources to help you
- We investigate all quality concerns to ensure our products perform to the highest standards

If the product does not perform as described on this datasheet, we will offer a refund or replacement. For full details of the Abpromise, please visit <https://www.abcam.cn/abpromise> or contact our technical team.

Terms and conditions

- Guarantee only valid for products bought direct from Abcam or one of our authorized distributors