

Anti-MCP1 antibody [ECE.2] ab8101

★★★★★ [1 Abreviews](#) [28 References](#) [1 图像](#)

概述

产品名称	Anti-MCP1抗体[ECE.2]
描述	大鼠单克隆抗体[ECE.2] to MCP1
宿主	Rat
特异性	The antibody reacts with murine JE / MCP-1.
经测试应用	适用于: IHC-Fr
种属反应性	与反应: Mouse 不与反应: Human
免疫原	Synthetic peptide. This information is proprietary to Abcam and/or its suppliers.
阳性对照	Recombinant mouse MCP1 protein (ab9901) can be used as a positive control in WB.
常规说明	<p>The Life Science industry has been in the grips of a reproducibility crisis for a number of years. Abcam is leading the way in addressing this with our range of recombinant monoclonal antibodies and knockout edited cell lines for gold-standard validation. Please check that this product meets your needs before purchasing.</p> <p>If you have any questions, special requirements or concerns, please send us an inquiry and/or contact our Support team ahead of purchase. Recommended alternatives for this product can be found below, along with publications, customer reviews and Q&As</p>

性能

形式	Liquid
存放说明	Shipped at 4°C. Upon delivery aliquot and store at -20°C. Avoid freeze / thaw cycles.
存储溶液	Preservative: 0.02% Sodium azide Constituents: PBS, 0.1% BSA
纯度	Protein G purified
纯化说明	0.2 µm filtered antibody solution
克隆	单克隆
克隆编号	ECE.2
同种型	IgG1

应用

The Abpromise guarantee **Abpromise™**承诺保证使用ab8101于以下的经测试应用

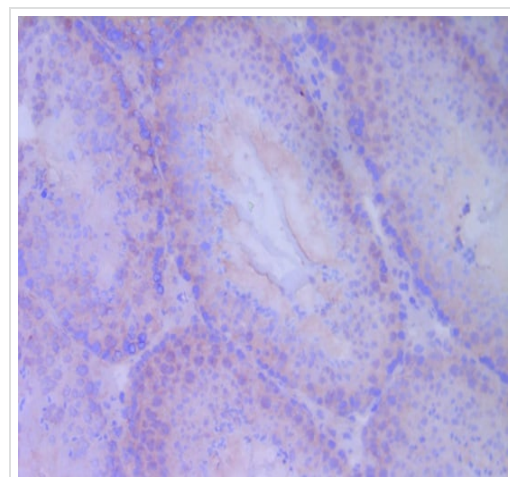
“应用说明”部分 下显示的仅为推荐的起始稀释度;实际最佳的稀释度/浓度应由使用者检定。

应用	Ab评论	说明
IHC-Fr		Use at an assay dependent concentration.

靶标

功能	Chemotactic factor that attracts monocytes and basophils but not neutrophils or eosinophils. Augments monocyte anti-tumor activity. Has been implicated in the pathogenesis of diseases characterized by monocytic infiltrates, like psoriasis, rheumatoid arthritis or atherosclerosis. May be involved in the recruitment of monocytes into the arterial wall during the disease process of atherosclerosis.
序列相似性	Belongs to the intercrine beta (chemokine CC) family.
翻译后修饰	Processing at the N-terminus can regulate receptor and target cell selectivity. Deletion of the N-terminal residue converts it from an activator of basophil to an eosinophil chemoattractant.
细胞定位	Secreted.

图片



Immunohistochemistry (Frozen sections) - Anti-MCP1 antibody [ECE.2] (ab8101)

Detection of MCP-1 in mouse testis. ab8101 has been used in a 10x dilution, the magnification was 200x.

Please note: All products are "FOR RESEARCH USE ONLY. NOT FOR USE IN DIAGNOSTIC PROCEDURES"

Our Abpromise to you: Quality guaranteed and expert technical support

- Replacement or refund for products not performing as stated on the datasheet
- Valid for 12 months from date of delivery

- Response to your inquiry within 24 hours
- We provide support in Chinese, English, French, German, Japanese and Spanish
- Extensive multi-media technical resources to help you
- We investigate all quality concerns to ensure our products perform to the highest standards

If the product does not perform as described on this datasheet, we will offer a refund or replacement. For full details of the Abpromise, please visit <https://www.abcam.cn/abpromise> or contact our technical team.

Terms and conditions

- Guarantee only valid for products bought direct from Abcam or one of our authorized distributors