

Anti-MCP1 antibody ab7202

★★★★★ [2 Abreviews](#) [99 References](#) [2 图像](#)

概述

产品名称	Anti-MCP1抗体
描述	兔多克隆抗体to MCP1
宿主	Rabbit
经测试应用	适用于: ICC/IF, IHC-P, IHC-Fr, WB, Neutralising
种属反应性	与反应: Mouse, Rat
免疫原	Recombinant full length protein corresponding to Rat MCP1. Database link: P14844
阳性对照	IHC-P: LPS-treated rat lung tissue.
常规说明	<p>The Life Science industry has been in the grips of a reproducibility crisis for a number of years. Abcam is leading the way in addressing this with our range of recombinant monoclonal antibodies and knockout edited cell lines for gold-standard validation. Please check that this product meets your needs before purchasing.</p> <p>If you have any questions, special requirements or concerns, please send us an inquiry and/or contact our Support team ahead of purchase. Recommended alternatives for this product can be found below, along with publications, customer reviews and Q&As</p>

性能

形式	Liquid
存放说明	Shipped at 4°C. Store at +4°C short term (1-2 weeks). Upon delivery aliquot. Store at -20°C or -80°C. Avoid freeze / thaw cycle.
存储溶液	pH: 6.50 Preservative: 0.1% Sodium azide Constituent: PBS
纯度	Protein A purified
克隆	多克隆
同种型	IgG

应用

The Abpromise guarantee **Abpromise™**承诺保证使用ab7202于以下的经测试应用

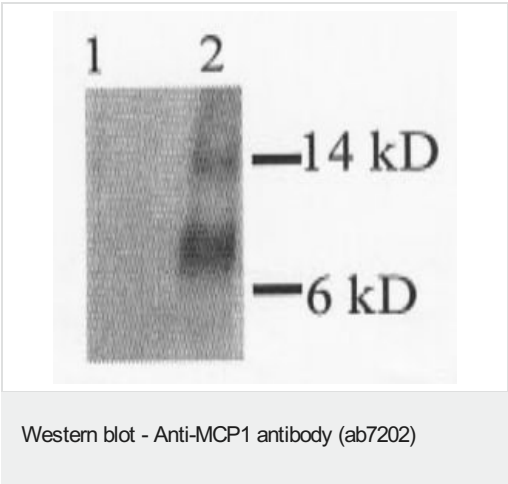
“应用说明”部分 下显示的仅为推荐的起始稀释度;实际最佳的稀释度/浓度应由使用者检定。

应用	Ab评论	说明
ICC/IF		Use at an assay dependent concentration.
IHC-P		1/300.
IHC-Fr	★★★★★ (1)	Use at an assay dependent concentration. PubMed: 21088249
WB	★★★★★ (1)	1/2000. Predicted molecular weight: 18 kDa.
Neutralising		Use at an assay dependent concentration.

靶标

功能	Chemotactic factor that attracts monocytes and basophils but not neutrophils or eosinophils. Augments monocyte anti-tumor activity. Has been implicated in the pathogenesis of diseases characterized by monocytic infiltrates, like psoriasis, rheumatoid arthritis or atherosclerosis. May be involved in the recruitment of monocytes into the arterial wall during the disease process of atherosclerosis.
序列相似性	Belongs to the intercrine beta (chemokine CC) family.
翻译后修饰	Processing at the N-terminus can regulate receptor and target cell selectivity. Deletion of the N-terminal residue converts it from an activator of basophil to an eosinophil chemoattractant.
细胞定位	Secreted.

图片



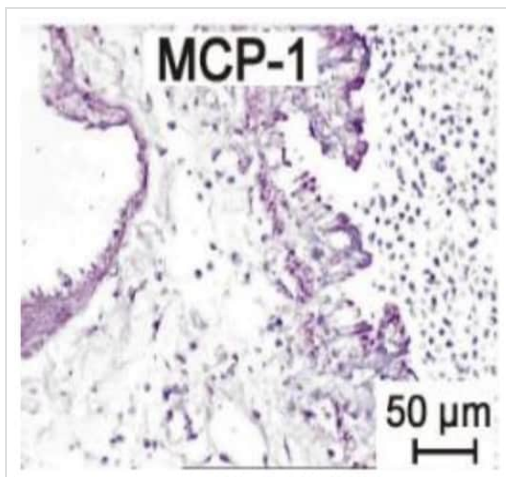
All lanes : Anti-MCP1 antibody (ab7202)

Lane 1 : LPS-stimulated RAW cell lysate

Lane 2 : Rat MCP1-transfected RAW cell lysate

Predicted band size: 18 kDa

Western blot analysis of RAW cell lysates labelling MCP1 with ab7202.



Immunohistochemical analysis of paraffin-embedded LPS-treated rat lung tissue stained for MCP1 using ab7202 at 1/300 dilution.

Immunohistochemistry (Formalin/PFA-fixed paraffin-embedded sections) - Anti-MCP1 antibody (ab7202)

Please note: All products are "FOR RESEARCH USE ONLY. NOT FOR USE IN DIAGNOSTIC PROCEDURES"

Our Abpromise to you: Quality guaranteed and expert technical support

- Replacement or refund for products not performing as stated on the datasheet
- Valid for 12 months from date of delivery
- Response to your inquiry within 24 hours
- We provide support in Chinese, English, French, German, Japanese and Spanish
- Extensive multi-media technical resources to help you
- We investigate all quality concerns to ensure our products perform to the highest standards

If the product does not perform as described on this datasheet, we will offer a refund or replacement. For full details of the Abpromise, please visit <https://www.abcam.cn/abpromise> or contact our technical team.

Terms and conditions

- Guarantee only valid for products bought direct from Abcam or one of our authorized distributors