

# Anti-MCP1 antibody [2.2-4H5-1A11] ab9858

[1 Abreviews](#) [4 References](#) [2 图像](#)

### 概述

产品名称	Anti-MCP1抗体[2.2-4H5-1A11]
描述	小鼠单克隆抗体[2.2-4H5-1A11] to MCP1
宿主	Mouse
经测试应用	适用于: WB, IHC-P, ELISA, Sandwich ELISA
种属反应性	与反应: Human, Recombinant fragment
免疫原	Recombinant full length protein corresponding to Human MCP1. Recombinant hMCAF/MCP-1 (human Macrophage/Monocyte chemotactic protein-1) Database link: <a href="#">P13500</a>
阳性对照	WB: Recombinant human MCP1 protein ( <a href="#">ab9670</a> ).
常规说明	<p>This product is no longer batch tested in IHC, for an IHC validated antibody please see <a href="#">ab73680</a></p> <p>The Life Science industry has been in the grips of a reproducibility crisis for a number of years. Abcam is leading the way in addressing this with our range of recombinant monoclonal antibodies and knockout edited cell lines for gold-standard validation. Please check that this product meets your needs before purchasing.</p> <p>If you have any questions, special requirements or concerns, please send us an inquiry and/or contact our Support team ahead of purchase. Recommended alternatives for this product can be found below, along with publications, customer reviews and Q&amp;As</p>

### 性能

形式	Lyophilized:Reconstitute with 500µl of sterile water. Please note that if you receive this product in liquid form it has already been reconstituted as described and no further reconstitution is necessary.
存放说明	Shipped at 4°C. Store at +4°C short term (1-2 weeks). Upon delivery aliquot. Store at -20°C long term.
纯度	Protein A purified
克隆	单克隆
克隆编号	2.2-4H5-1A11
骨髓瘤	unknown
同种型	IgG1

轻链类型

kappa

## 应用

**The Abpromise guarantee**      **Abpromise™**承诺保证使用ab9858于以下的经测试应用

“应用说明”部分 下显示的仅为推荐的起始稀释度;实际最佳的稀释度/浓度应由使用者检定。

应用	Ab评论	说明
WB		Use at an assay dependent concentration.
IHC-P		Use at an assay dependent concentration.
ELISA		Use at an assay dependent concentration.
Sandwich ELISA		Use a concentration of 1 µg/ml. Can be paired for Sandwich ELISA with <b>Rabbit polyclonal to MCP1 (ab9669)</b> . For sandwich ELISA, use this antibody as Capture at 1 µg/ml with <b>ab9669</b> as Detection.

## 靶标

### 功能

Chemotactic factor that attracts monocytes and basophils but not neutrophils or eosinophils. Augments monocyte anti-tumor activity. Has been implicated in the pathogenesis of diseases characterized by monocytic infiltrates, like psoriasis, rheumatoid arthritis or atherosclerosis. May be involved in the recruitment of monocytes into the arterial wall during the disease process of atherosclerosis.

### 序列相似性

Belongs to the intercrine beta (chemokine CC) family.

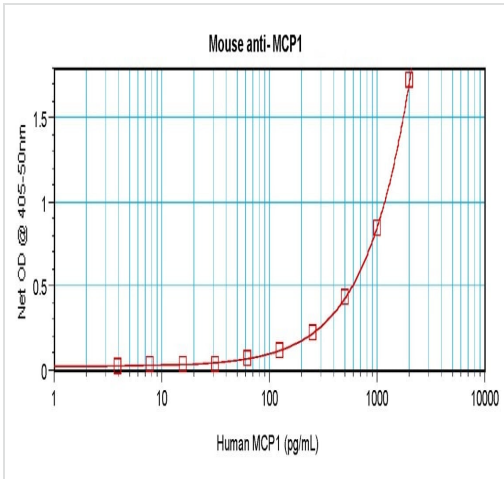
### 翻译后修饰

Processing at the N-terminus can regulate receptor and target cell selectivity. Deletion of the N-terminal residue converts it from an activator of basophil to an eosinophil chemoattractant.

### 细胞定位

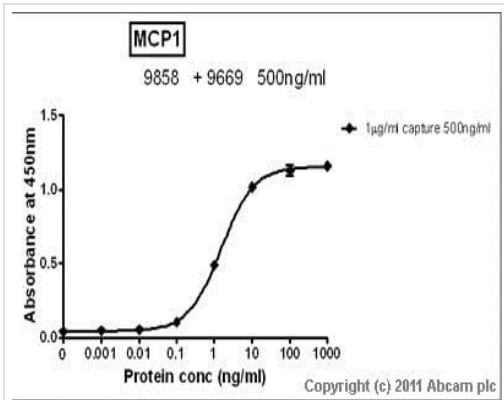
Secreted.

## 图片



Sandwich ELISA - Anti-MCP1 antibody [2.2-4H5-1A11] (ab9858)

In a sandwich ELISA (assuming 100  $\mu$ l/well), a concentration of 1.0-2.0  $\mu$ g/ml of this antibody will detect at least 100 pg/mL of Recombinant Human MCP-1 when used with Biotin Anti-MCP1 antibody (**ab271250**) as the detection antibody at a concentration of approximately 0.5-1.0  $\mu$ g/mL.



Sandwich ELISA - Anti-MCP1 antibody [2.2-4H5-1A11] (ab9858)

Standard curve for MCP1 (Analyte: **ab73866**); dilution range 1pg/ml to 1 $\mu$ g/ml using Capture Antibody Mouse monoclonal to MCP1 (ab9858) at 1 $\mu$ g/ml and Detector Antibody Rabbit polyclonal to MCP1 (**ab9669**) at 0.5 $\mu$ g/ml.

**Please note:** All products are "FOR RESEARCH USE ONLY. NOT FOR USE IN DIAGNOSTIC PROCEDURES"

### Our Abpromise to you: Quality guaranteed and expert technical support

- Replacement or refund for products not performing as stated on the datasheet
- Valid for 12 months from date of delivery
- Response to your inquiry within 24 hours
- We provide support in Chinese, English, French, German, Japanese and Spanish
- Extensive multi-media technical resources to help you
- We investigate all quality concerns to ensure our products perform to the highest standards

If the product does not perform as described on this datasheet, we will offer a refund or replacement. For full details of the Abpromise, please visit <https://www.abcam.cn/abpromise> or contact our technical team.

### Terms and conditions

- Guarantee only valid for products bought direct from Abcam or one of our authorized distributors