

Anti-MCM2 antibody [SP85] ab95361

重组 RabMAb

2 References 12 图像

概述

产品名称	Anti-MCM2抗体[SP85]
描述	兔单克隆抗体[SP85] to MCM2
宿主	Rabbit
经测试应用	适用于: WB, IHC-P, Flow Cyt (Intra), ICC/IF
种属反应性	与反应: Mouse, Rat, Human 预测可用于: Cow, Dog 
免疫原	Synthetic peptide within Human MCM2 aa 100-200. The exact sequence is proprietary. Database link: P49736
阳性对照	WB: HeLa cell lysate. IHC-P: Human rectal carcinoma, human pancreas adenocarcinoma and human prostate tissue. ICC/IF: HeLa, NIH/3T3 and C6 cells. Flow Cyt (Intra): HeLa, NIH/3T3 and C6 cells.
常规说明	This product is FOR RESEARCH USE ONLY. For commercial use, please contact partnerships@abcam.com.

性能

形式	Liquid
存放说明	Shipped at 4°C. Store at +4°C.
存储溶液	pH: 7.60 Preservative: 0.1% Sodium azide Constituents: PBS, 1% BSA
纯度	Protein A/G purified
纯化说明	Purified from TCS by protein A/G.
克隆	单克隆
克隆编号	SP85
同种型	IgG

应用

The Abpromise guarantee

Abpromise™ 承诺保证使用 ab95361 于以下的经测试应用

“应用说明”部分 下显示的仅为推荐的起始稀释度;实际最佳的稀释度/浓度应由使用者检定。

应用	Ab评论	说明
WB		Use at an assay dependent concentration.
IHC-P		1/100. Antigen retrieval is recommended by the following method: boil tissue section in 1mM EDTA, pH 8.0 for 10 min followed by cooling at RT for 20 min.
Flow Cyt (Intra)		1/200. ab172730 - Rabbit monoclonal IgG, is suitable for use as an isotype control with this antibody.
ICC/IF		1/50.

靶标

功能

Acts as component of the MCM2-7 complex (MCM complex) which is the putative replicative helicase essential for 'once per cell cycle' DNA replication initiation and elongation in eukaryotic cells. The active ATPase sites in the MCM2-7 ring are formed through the interaction surfaces of two neighboring subunits such that a critical structure of a conserved arginine finger motif is provided in trans relative to the ATP-binding site of the Walker A box of the adjacent subunit. The six ATPase active sites, however, are likely to contribute differentially to the complex helicase activity. Required for the entry in S phase and for cell division.

序列相似性

Belongs to the MCM family.
Contains 1 MCM domain.

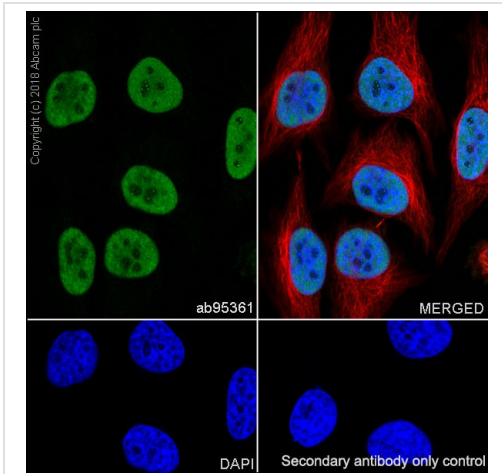
翻译后修饰

Phosphorylated on Ser-108 by ATR in proliferating cells. Ser-108 proliferation is increased by genotoxic agents. Ser-40 is mediated by the CDC7-DBF4 and CDC7-DBF4B complexes, while Ser-53 phosphorylation is only mediated by the CDC7-DBF4 complex. Phosphorylation by the CDC7-DBF4 complex during G1/S phase is required for the initiation of DNA replication.

细胞定位

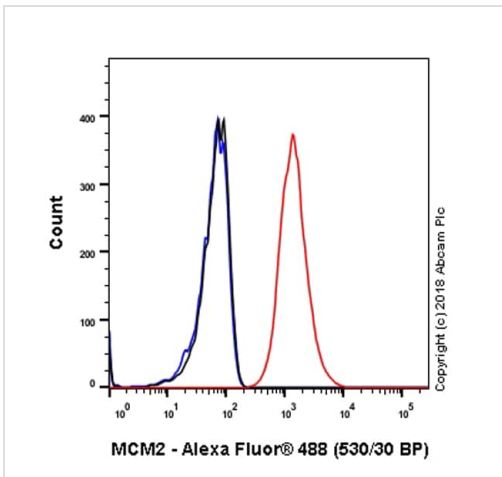
Nucleus.

图片



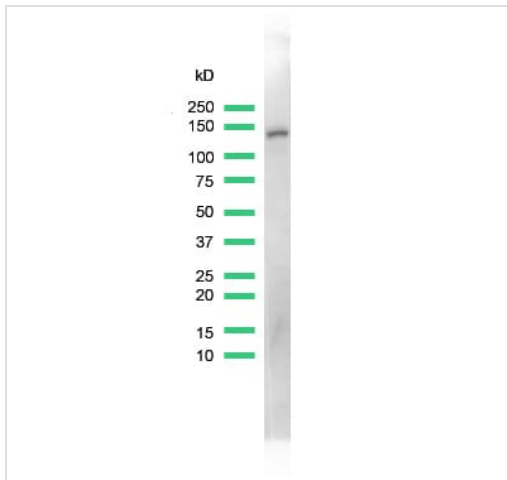
Immunocytochemistry/ Immunofluorescence - Anti-MCM2 antibody [SP85] (ab95361)

Immunocytochemistry/ Immunofluorescence analysis of HeLa (human cervix adenocarcinoma epithelial cell) cells labeling MCM2 with purified ab95361 at 1/50 (2.5 µg/ml). Cells were fixed in 4% paraformaldehyde and permeabilized with 0.1% Triton X-100. Cells were counterstained with **ab195889** Anti-alpha Tubulin antibody [DM1A] - Microtubule Marker (Alexa Fluor® 594) 1/200 (2.5 µg/ml). Goat anti rabbit IgG (Alexa Fluor® 488, **ab150077**) was used as the secondary antibody at 1/1000 (2 µg/ml) dilution. DAPI was used as nuclear counterstain. PBS instead of the primary antibody was used as the secondary antibody only control.



Flow Cytometry (Intracellular) - Anti-MCM2 antibody [SP85] (ab95361)

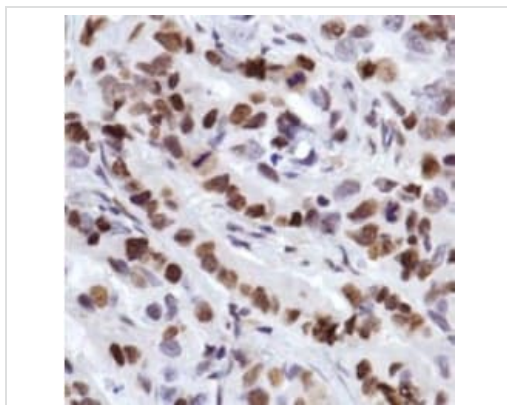
Flow cytometry analysis of HeLa (human cervix adenocarcinoma epithelial cell) labeling MCM2 with purified ab95361 at 1/200 dilution (0.615 µg/ml) (red). Cells were fixed with 4% paraformaldehyde and permeabilised with 90% methanol. Goat anti rabbit IgG (Alexa Fluor® 488, **ab150077**) at 1/2000 dilution was used as a secondary antibody. Isotype control - Rabbit monoclonal IgG (**ab172730**) (black). Unlabeled control - Unlabelled cells (blue).



Western blot - Anti-MCM2 antibody [SP85]
(ab95361)

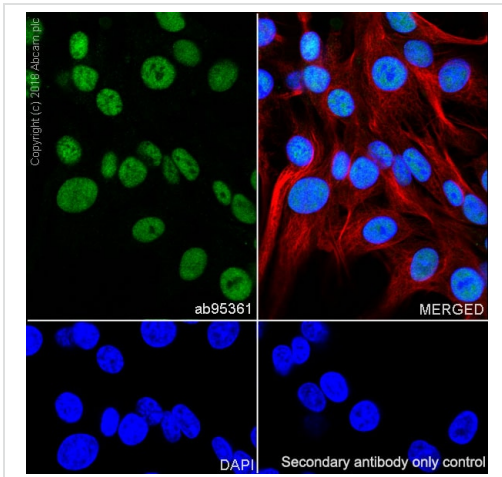
Anti-MCM2 antibody [SP85] (ab95361) at 1/100 dilution + lysate prepared from HeLa cells

Observed band size: 130 kDa



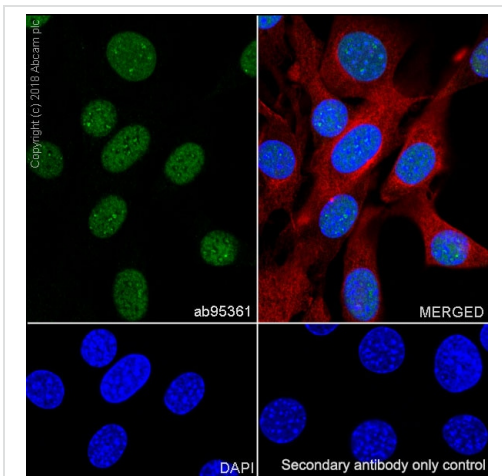
Immunohistochemistry (Formalin/PFA-fixed paraffin-embedded sections) - Anti-MCM2 antibody [SP85]
(ab95361)

ab95361, at 1/100 dilution, staining MCM2 in formalin-fixed, paraffin-embedded Human rectal carcinoma tissue by Immunohistochemistry.



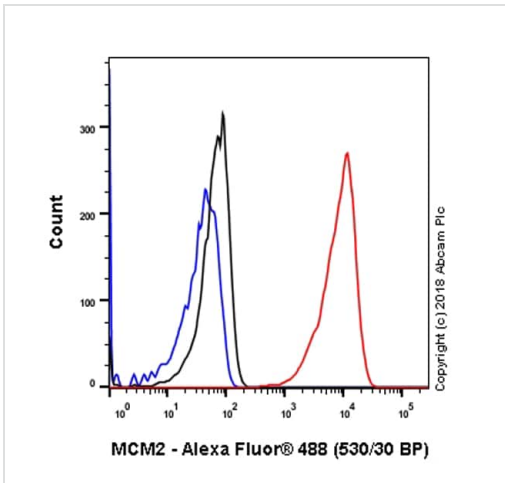
Immunocytochemistry/ Immunofluorescence - Anti-MCM2 antibody [SP85] (ab95361)

Immunocytochemistry/ Immunofluorescence analysis of C6 (rat glial tumor glial cell) cells labeling MCM2 with purified ab95361 at 1/50 (2.5 µg/ml). Cells were fixed in 4% paraformaldehyde and permeabilized with 0.1% Triton X-100. Cells were counterstained with **ab195889** Anti-alpha Tubulin antibody [DM1A] - Microtubule Marker (Alexa Fluor[®] 594) 1/200 (2.5 µg/ml). Goat anti rabbit IgG (Alexa Fluor[®] 488, **ab150077**) was used as the secondary antibody at 1/1000 (2 µg/ml) dilution. DAPI was used as nuclear counterstain. PBS instead of the primary antibody was used as the secondary antibody only control.



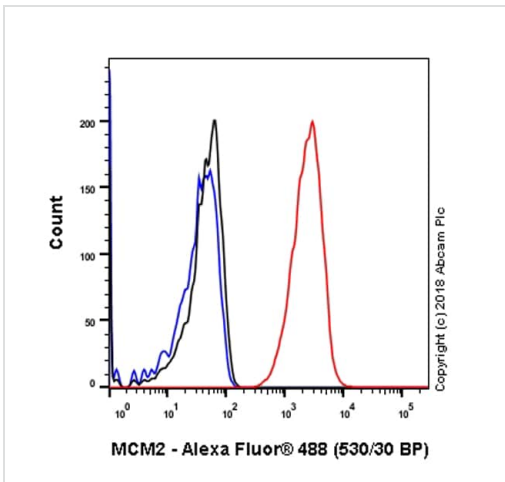
Immunocytochemistry/ Immunofluorescence - Anti-MCM2 antibody [SP85] (ab95361)

Immunocytochemistry/ Immunofluorescence analysis of NIH/3T3 (mouse embryonic fibroblast) cells labeling MCM2 with purified ab95361 at 1/50 (2.5 µg/ml). Cells were fixed in 4% paraformaldehyde and permeabilized with 0.1% Triton X-100. Cells were counterstained with **ab195889** Anti-alpha Tubulin antibody [DM1A] - Microtubule Marker (Alexa Fluor[®] 594) 1/200 (2.5 µg/ml). Goat anti rabbit IgG (Alexa Fluor[®] 488, **ab150077**) was used as the secondary antibody at 1/1000 (2 µg/ml) dilution. DAPI was used as nuclear counterstain. PBS instead of the primary antibody was used as the secondary antibody only control.



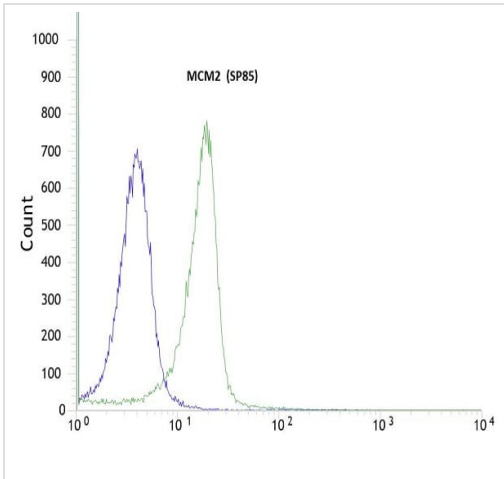
Flow cytometry analysis of C6 (rat glial tumor glial cell) labeling MCM2 with purified ab95361 at 1/200 dilution (0.615 µg/ml) (red). Cells were fixed with 4% paraformaldehyde and permeabilised with 90% methanol. Goat anti rabbit IgG (Alexa Fluor® 488, [ab150077](#)) at 1/2000 dilution was used as a secondary antibody. Isotype control - Rabbit monoclonal IgG ([ab172730](#)) (black). Unlabeled control - Unlabelled cells (blue).

Flow Cytometry (Intracellular) - Anti-MCM2 antibody [SP85] (ab95361)



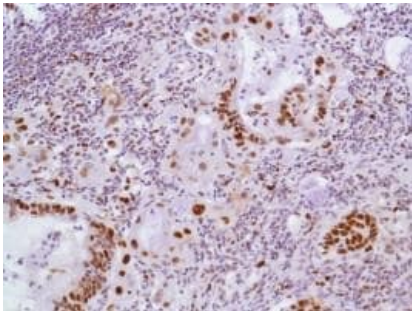
Flow cytometry analysis of NIH/3T3 (mouse embryonic fibroblast) labeling MCM2 with purified ab95361 at 1/200 dilution (0.615 µg/ml) (red). Cells were fixed with 4% paraformaldehyde and permeabilised with 90% methanol. Goat anti rabbit IgG (Alexa Fluor® 488, [ab150077](#)) at 1/2000 dilution was used as a secondary antibody. Isotype control - Rabbit monoclonal IgG ([ab172730](#)) (black). Unlabeled control - Unlabelled cells (blue).

Flow Cytometry (Intracellular) - Anti-MCM2 antibody [SP85] (ab95361)



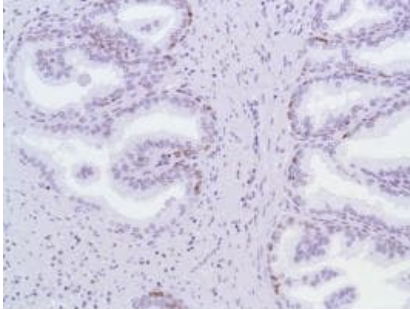
Flow cytometric analysis using rabbit anti-MCM2 (SP85) antibody ab95361(1/100) in HeLa cells (green) compared to negative control of rabbit IgG (blue).

Flow Cytometry (Intracellular) - Anti-MCM2 antibody [SP85] (ab95361)



ab95361, at 1/100 dilution, staining MCM2 in formalin-fixed, paraffin-embedded Human pancreas adenocarcinoma tissue by Immunohistochemistry.

Immunohistochemistry (Formalin/PFA-fixed paraffin-embedded sections) - Anti-MCM2 antibody [SP85] (ab95361)



ab95361, at 1/100 dilution, staining MCM2 in formalin-fixed, paraffin-embedded Human prostate tissue by Immunohistochemistry.

Immunohistochemistry (Formalin/PFA-fixed paraffin-embedded sections) - Anti-MCM2 antibody [SP85] (ab95361)

Why choose a recombinant antibody?



Research with confidence
Consistent and reproducible results



Long-term and scalable supply
Recombinant technology



Success from the first experiment
Confirmed specificity



Ethical standards compliant
Animal-free production

Anti-MCM2 antibody [SP85] (ab95361)

Please note: All products are "FOR RESEARCH USE ONLY. NOT FOR USE IN DIAGNOSTIC PROCEDURES"

Our Abpromise to you: Quality guaranteed and expert technical support

- Replacement or refund for products not performing as stated on the datasheet
- Valid for 12 months from date of delivery
- Response to your inquiry within 24 hours
- We provide support in Chinese, English, French, German, Japanese and Spanish
- Extensive multi-media technical resources to help you
- We investigate all quality concerns to ensure our products perform to the highest standards

If the product does not perform as described on this datasheet, we will offer a refund or replacement. For full details of the Abpromise, please visit <https://www.abcam.cn/abpromise> or contact our technical team.

Terms and conditions

- Guarantee only valid for products bought direct from Abcam or one of our authorized distributors