

Anti-mCherry antibody [EPR20579] ab213511

重组 RabMAb

★★★★★ **5 Abreviews** **21 References** **4 图像**

概述

产品名称	Anti-mCherry抗体[EPR20579]
描述	兔单克隆抗体[EPR20579] to mCherry
宿主	Rabbit
经测试应用	适用于: IP, WB 不适用于: Flow Cyt or ICC/IF
种属反应性	与反应: Species independent
免疫原	Recombinant fragment. This information is proprietary to Abcam and/or its suppliers.
阳性对照	WB: 293T cells transfected with a His-tagged mCherry whole cell lysate. IP: 293T cells transfected with a His-tagged mCherry whole cell lysate.
常规说明	This product is a recombinant monoclonal antibody, which offers several advantages including: <ul style="list-style-type: none"> - High batch-to-batch consistency and reproducibility - Improved sensitivity and specificity - Long-term security of supply - Animal-free production For more information see here . Our RabMAb [®] technology is a patented hybridoma-based technology for making rabbit monoclonal antibodies. For details on our patents, please refer to RabMAb[®] patents .

性能

形式	Liquid
存放说明	Shipped at 4°C. Store at +4°C short term (1-2 weeks). Upon delivery aliquot. Store at -20°C long term. Avoid freeze / thaw cycle.
存储溶液	pH: 7.2 Preservative: 0.01% Sodium azide Constituents: 0.05% BSA, 40% Glycerol, PBS
纯度	Protein A purified
克隆	单克隆
克隆编号	EPR20579

同种型

IgG

应用

The Abpromise guarantee

Abpromise™承诺保证使用ab213511于以下的经测试应用

“应用说明”部分 下显示的仅为推荐的起始稀释度;实际最佳的稀释度/浓度应由使用者检定。

应用	Ab评论	说明
IP	★★★★★ (2)	1/20.
WB	★★★★★ (2)	1/1000. Detects a band of approximately 29 kDa (predicted molecular weight: 26 kDa).

应用说明

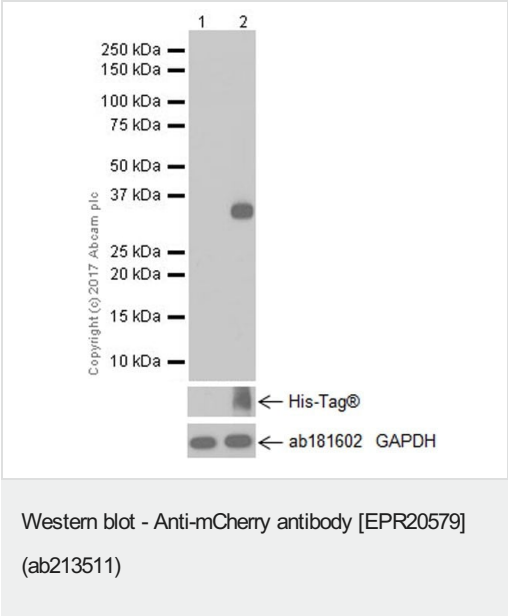
Is unsuitable for Flow Cyt or ICC/IF.

靶标

相关性

mCherry is derived from proteins originally isolated from *Cnidarians* (jelly fish, sea anemones and corals), and is used as a fluorescent tracer in trasfection and transgenic experiments. The prototype for these fluorescent proteins is Green Fluorescent Protein (GFP), which is a ~27kDa protein isolated originally from the jellyfish *Aequoria victoria*. The mCherry protein is derived from DsRed, a red fluorescent protein related to GFP isolated from so-called disc corals of the genus *Discosoma*.

图片



All lanes : Anti-mCherry antibody [EPR20579] (ab213511) at 1/1000 dilution

Lane 1 : 293T (human epithelial cell line from embryonic kidney transformed with large T antigen) transfected with an empty expression vector whole cell lysate

Lane 2 : 293T (human epithelial cell line from embryonic kidney transformed with large T antigen) transfected with a His-tagged mCherry whole cell lysate

Lysates/proteins at 10 µg per lane.

Secondary

All lanes : Goat Anti-Rabbit IgG H&L (HRP) (ab97051) at 1/100000 dilution

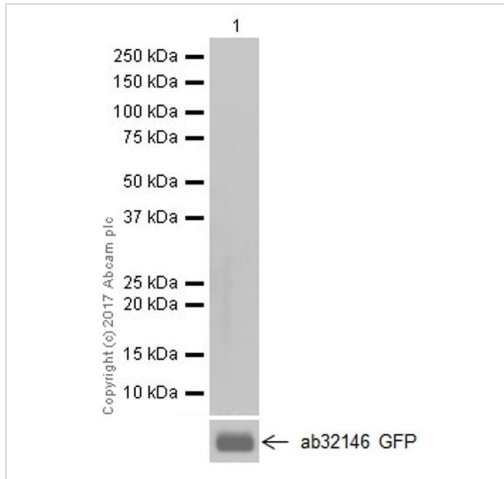
Developed using the ECL technique.

Predicted band size: 26 kDa

Observed band size: 29 kDa

Exposure time: 5 seconds

Blocking/Dilution buffer: 5% NFDM/TBST.



Western blot - Anti-mCherry antibody [EPR20579] (ab213511)

Anti-mCherry antibody [EPR20579] (ab213511) at 1/1000 dilution +
Green fluorescent protein (GFP) at 0.01 μ g

Secondary

Goat Anti-Rabbit IgG H&L (HRP) ([ab97051](#)) at 1/100000 dilution

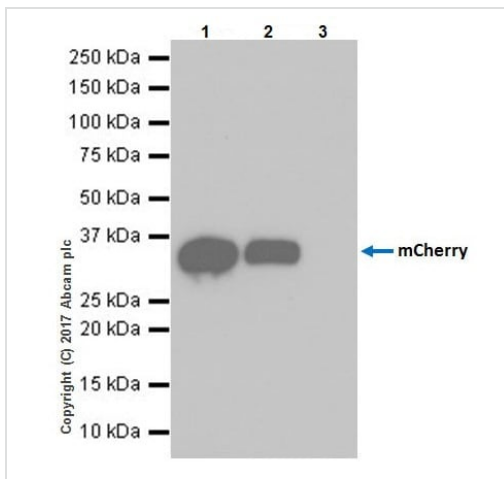
Developed using the ECL technique.

Predicted band size: 26 kDa

Exposure time: 3 minutes

Blocking/Dilution buffer: 5% NFDM/TBST.

Green fluorescent protein (GFP) contains aa1-238 with His-tag.



Immunoprecipitation - Anti-mCherry antibody [EPR20579] (ab213511)

mCherry was immunoprecipitated from 0.35 mg of 293T (human epithelial cell line from embryonic kidney transformed with large T antigen) transfected with a His-tagged mCherry whole cell lysate with ab213511 at 1/20 dilution. Western blot was performed from the immunoprecipitate using ab213511 at 1/1000 dilution. VeriBlot for IP Detection Reagent (HRP) ([ab131366](#)), was used for detection at 1/10,000 dilution.

Lane 1: 293T transfected with a His-tagged mCherry whole cell lysate 10 μ g (Input).

Lane 2: ab213511 IP in 293T transfected with a His-tagged mCherry whole cell lysate.

Lane 3: Rabbit monoclonal IgG ([ab172730](#)) instead of ab213511 in 293T transfected with a His-tagged mCherry whole cell lysate.

Blocking and dilution buffer and concentration: 5% NFDM/TBST.

Exposure time: 10 seconds.

Why choose a recombinant antibody?



Research with confidence
Consistent and reproducible results



Long-term and scalable supply
Recombinant technology



Success from the first experiment
Confirmed specificity



Ethical standards compliant
Animal-free production

Anti-mCherry antibody [EPR20579] (ab213511)

Please note: All products are "FOR RESEARCH USE ONLY. NOT FOR USE IN DIAGNOSTIC PROCEDURES"

Our Abpromise to you: Quality guaranteed and expert technical support

- Replacement or refund for products not performing as stated on the datasheet
- Valid for 12 months from date of delivery
- Response to your inquiry within 24 hours
- We provide support in Chinese, English, French, German, Japanese and Spanish
- Extensive multi-media technical resources to help you
- We investigate all quality concerns to ensure our products perform to the highest standards

If the product does not perform as described on this datasheet, we will offer a refund or replacement. For full details of the Abpromise, please visit <https://www.abcam.cn/abpromise> or contact our technical team.

Terms and conditions

- Guarantee only valid for products bought direct from Abcam or one of our authorized distributors