

### Anti-mCherry antibody ab183628

★★★★★ [6 Abreviews](#) [68 References](#) [7 图像](#)

#### 概述

产品名称	Anti-mCherry抗体
描述	兔多克隆抗体to mCherry
宿主	Rabbit
经测试应用	适用于: ICC/IF, IHC - Wholemount, IP, WB
种属反应性	与反应: Species independent
免疫原	Recombinant full length protein corresponding to mCherry.
阳性对照	IHC-Wm: 2 days-post-fertilization zebrafish embryos . WB: Full length recombinant mCherry. mCherry-tagged protein expressing HEK-293T cell lysate. ICC/IF: mCherry fusion protein-transfected HeLa cells IP: HEK-293T
常规说明	<p>The Life Science industry has been in the grips of a reproducibility crisis for a number of years. Abcam is leading the way in addressing this with our range of recombinant monoclonal antibodies and knockout edited cell lines for gold-standard validation. Please check that this product meets your needs before purchasing.</p> <p>If you have any questions, special requirements or concerns, please send us an inquiry and/or contact our Support team ahead of purchase. Recommended alternatives for this product can be found below, along with publications, customer reviews and Q&amp;As</p>

#### 性能

形式	Liquid
存放说明	Shipped at 4°C. Store at +4°C short term (1-2 weeks). Upon delivery aliquot. Store at -20°C long term. Avoid freeze / thaw cycle.
存储溶液	<p>pH: 7.00</p> <p>Preservative: 0.025% Proclin 300</p> <p>Constituents: 78% PBS, 1% BSA, 20% Glycerol (glycerin, glycerine)</p>
纯度	Immunogen affinity purified
克隆	多克隆
同种型	IgG

#### 应用

The Abpromise guarantee

Abpromise™承诺保证使用ab183628于以下的经测试应用

“应用说明”部分 下显示的仅为推荐的起始稀释度;实际最佳的稀释度/浓度应由使用者检定。

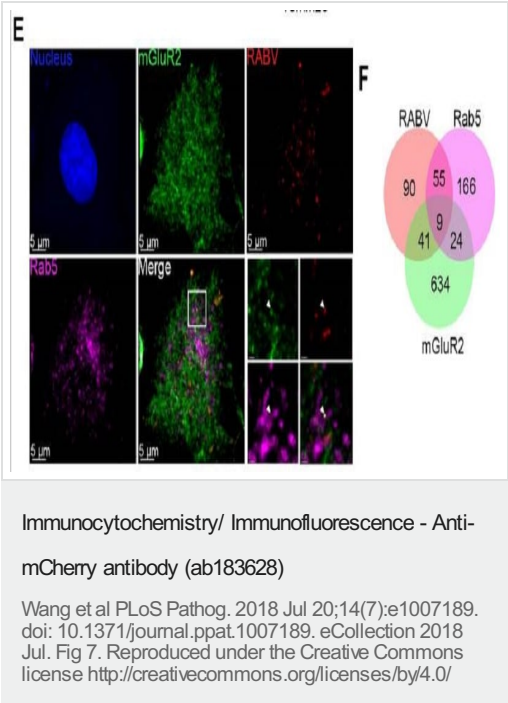
应用	Ab评论	说明
ICC/IF	★★★★☆ (1)	1/100 - 1/1000.
IHC - Wholemount		1/100 - 1/500.
IP	★★★★★ (2)	1/100 - 1/500.
WB	★★★★★ (2)	1/1000 - 1/10000. Predicted molecular weight: 27 kDa.

靶标

相关性

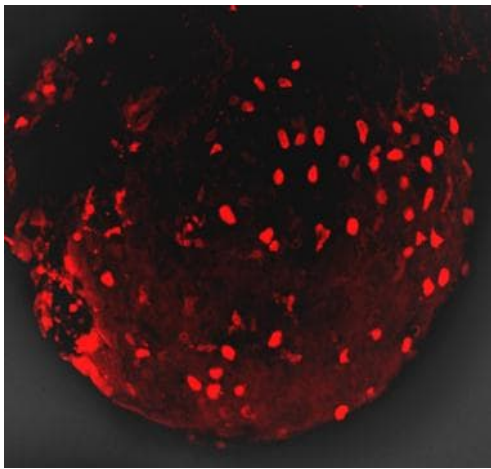
mCherry is derived from proteins originally isolated from *Cnidarians* (jelly fish, sea anemones and corals), and is used as a fluorescent tracer in trasfection and transgenic experiments. The prototype for these fluorescent proteins is Green Fluorescent Protein (GFP), which is a ~27kDa protein isolated originally from the jellyfish *Aequoria victoria*. The mCherry protein is derived from DsRed, a red fluorescent protein related to GFP isolated from so-called disc corals of the genus *Discosoma*.

图片



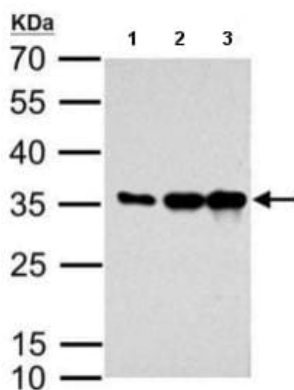
**RABV and mGluR2 are internalized into cells and transported together in early and late endosomes.**

N2a (Mouse neuroblastoma cells) cells were stained by using the Tyramide Signal Amplification immunofluorescent method. N2a cells infected with ERA-N-mCherry for 20 minutes at 37°C were used to perform immunofluorescence staining for RABV antigen (red), mGluR2 (green), Rab5 or Rab7 (purple), and the cell nuclei (blue). Co-localization of the RABV-mGluR2 complex with Rab5 (E, F).



IHC - Wholmount - Anti-mCherry antibody  
(ab183628)

Whole mount immunohistochemical analysis of 2 days-post-fertilization zebrafish embryos labeling mCherry-expressing cells with ab183628 at 1/100 dilution.



Western blot - Anti-mCherry antibody (ab183628)

**All lanes :** Anti-mCherry antibody (ab183628) at 1/2000 dilution

**Lane 1 :** Full length recombinant mCherry at 0.005  $\mu$ g

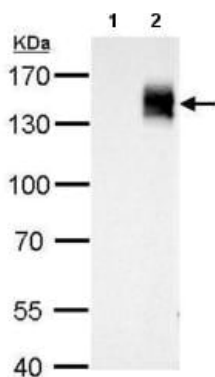
**Lane 2 :** Full length recombinant mCherry at 0.01  $\mu$ g

**Lane 3 :** Full length recombinant mCherry at 0.02  $\mu$ g

**Secondary**

**All lanes :** HRP-conjugated anti-rabbit IgG

**Predicted band size:** 27 kDa



Western blot - Anti-mCherry antibody (ab183628)

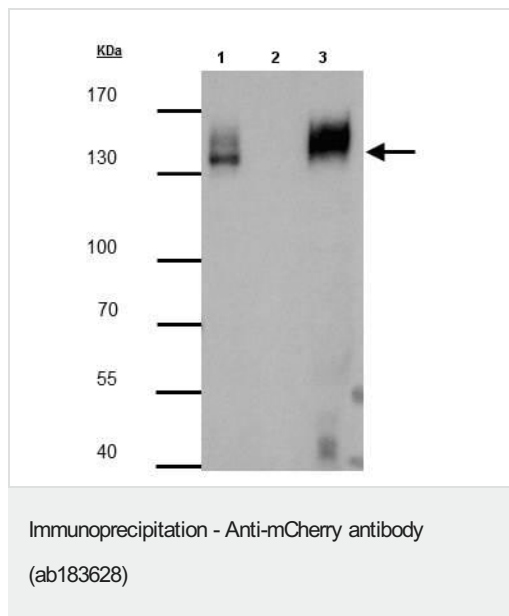
**All lanes :** Anti-mCherry antibody (ab183628) at 1/5000 dilution

**Lane 1 :** HEK-293T (Human epithelial cell line from embryonic kidney transformed with large T antigen) whole cell lysate/extract

**Lane 2 :** Whole cell lysate/extract of mCherry-tagged protein expressing HEK-293T cells

Lysates/proteins at 30  $\mu$ g per lane.

**Predicted band size:** 27 kDa



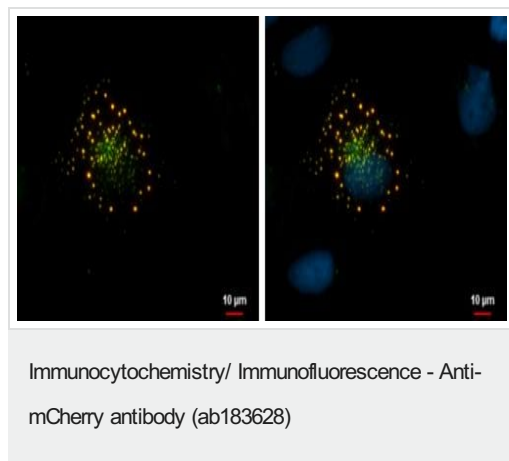
Immunoprecipitation analysis of HEK-293T (Human epithelial cell line from embryonic kidney transformed with large T antigen) whole cell lysate/extract using ab183628 at a 1/3000 dilution.

**Lane 1:** 20 µg whole cell lysate/extract of Cherry protein-expressing HEK-293T cells.

**Lane 2:** Control with 2.5 µg of pre-immune rabbit IgG.

**Lane 3:** Immunoprecipitation of mCherry protein with 2.5 µg of ab183628.

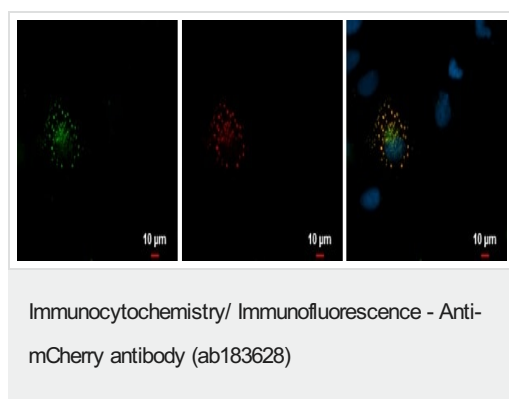
7.5% SDS-PAGE. An anti-rabbit IgG (HRP) was used as a secondary reagent.



Immunofluorescent analysis of mCherry fusion protein-transfected HeLa (Human epithelial cell line from cervix adenocarcinoma) cells. Cells were fixed with 4% paraformaldehyde for 30 minutes at room temperature and then permeabilized with 0.1% Triton X-100 for 1 minute. mCherry (green) was labeled using ab183628 at a dilution of 1/500.

**Red:** mCherry fusion protein is expressed in the transfected cell.

**Blue:** Hoechst 33342 staining.



Immunofluorescent analysis of mCherry fusion protein-transfected HeLa (Human epithelial cell line from cervix adenocarcinoma) cells. Cells were fixed with 4% paraformaldehyde for 30 minutes at room temperature and then permeabilized with 0.1% Triton X-100 for 1 minute. mCherry (green) was labeled using ab183628 at a dilution of 1/500.

**Red:** mCherry fusion protein is expressed in the transfected cell.

**Blue:** Hoechst 33342 staining.

**Please note:** All products are "FOR RESEARCH USE ONLY. NOT FOR USE IN DIAGNOSTIC PROCEDURES"

## Our Abpromise to you: Quality guaranteed and expert technical support

- Replacement or refund for products not performing as stated on the datasheet
- Valid for 12 months from date of delivery
- Response to your inquiry within 24 hours

- We provide support in Chinese, English, French, German, Japanese and Spanish
- Extensive multi-media technical resources to help you
- We investigate all quality concerns to ensure our products perform to the highest standards

If the product does not perform as described on this datasheet, we will offer a refund or replacement. For full details of the Abpromise, please visit <https://www.abcam.cn/abpromise> or contact our technical team.

#### **Terms and conditions**

---

- Guarantee only valid for products bought direct from Abcam or one of our authorized distributors