

Anti-MCEE antibody [OT11B5] ab236397

7 图像

概述

产品名称	Anti-MCEE抗体[OT11B5]
描述	小鼠单克隆抗体[OT11B5] to MCEE
宿主	Mouse
经测试应用	适用于: WB, IHC-P
种属反应性	与反应: Human
免疫原	Recombinant full length protein corresponding to Human MCEE. Produced in E.coli (NP_115990). Database link: Q96PE7
阳性对照	WB: pCMV6-ENTRY MCEE cDNA transfected HEK-293T cell lysate. IHC-P: Human colon adenocarcinoma, pancreas carcinoma, endometrium adenocarcinoma, prostate, prostate adenocarcinoma and bladder tissue.
常规说明	Clone OT11B5 (formerly 1B5). The Life Science industry has been in the grips of a reproducibility crisis for a number of years. Abcam is leading the way in addressing this with our range of recombinant monoclonal antibodies and knockout edited cell lines for gold-standard validation. Please check that this product meets your needs before purchasing. If you have any questions, special requirements or concerns, please send us an inquiry and/or contact our Support team ahead of purchase. Recommended alternatives for this product can be found below, along with publications, customer reviews and Q&As

性能

形式	Liquid
存放说明	Shipped at 4°C. Store at +4°C short term (1-2 weeks). Upon delivery aliquot. Store at -20°C long term. Avoid freeze / thaw cycle.
存储溶液	pH: 7.30 Preservative: 0.02% Sodium azide Constituents: PBS, 1% BSA, 50% Glycerol
纯度	Affinity purified
纯化说明	Purified from cell culture supernatant.
克隆	单克隆

克隆编号 OT11B5

同种型 IgG2b

应用

The Abpromise guarantee **Abpromise™** 承诺保证使用 ab236397 于以下的经测试应用

“应用说明”部分 下显示的仅为推荐的起始稀释度;实际最佳的稀释度/浓度应由使用者检定。

应用	Ab评论	说明
WB		1/2000. Predicted molecular weight: 19 kDa.
IHC-P		1/150. Heat-induced epitope retrieval by Tris-EDTA, pH 8.0.

靶标

疾病相关

Defects in MCEE are a cause of methylmalonyl-CoA epimerase deficiency (MCEE deficiency) [MIM:251120]; also known as methylmalonyl-CoA racemase deficiency or methylmalonic aciduria type 3. MCEE deficiency is an autosomal recessive inborn error of amino acid metabolism, involving valine, threonine, isoleucine and methionine. This organic aciduria may present in the neonatal period with life-threatening metabolic acidosis, hyperammonemia, feeding difficulties, pancytopenia and coma.

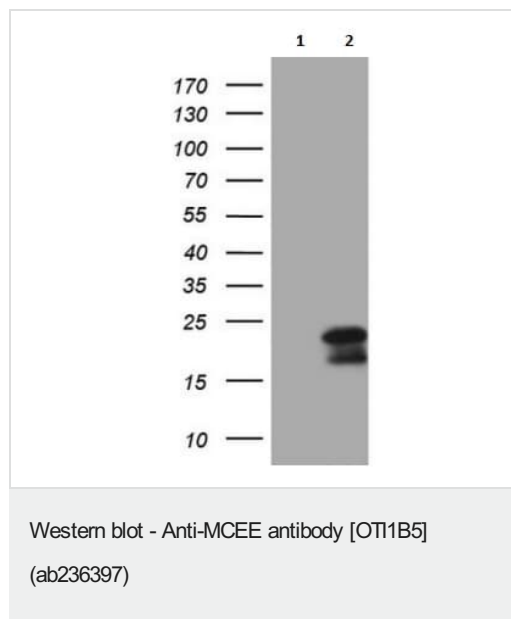
序列相似性

Belongs to the glyoxalase I family.

细胞定位

Mitochondrion.

图片



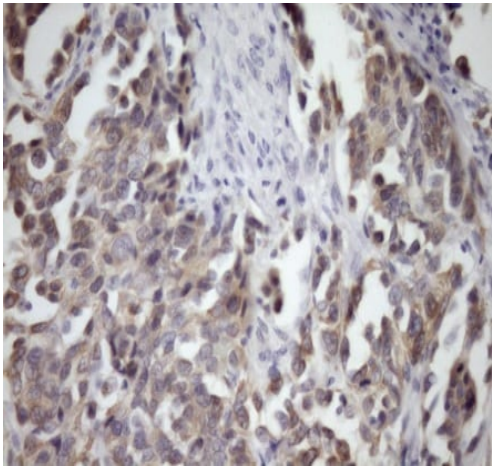
All lanes : Anti-MCEE antibody [OT11B5] (ab236397) at 1/2000 dilution

Lane 1 : pCMV6-ENTRY control cDNA transfected HEK-293T (human epithelial cell line from embryonic kidney transformed with large T antigen) cell lysate

Lane 2 : pCMV6-ENTRY MCEE cDNA transfected HEK-293T (human epithelial cell line from embryonic kidney transformed with large T antigen) cell lysate

Lysates/proteins at 5 µg per lane.

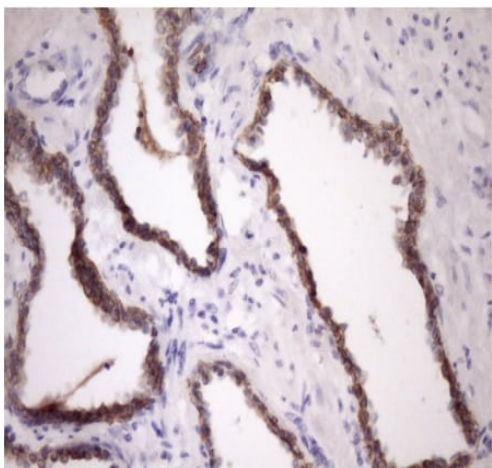
Predicted band size: 19 kDa



Immunohistochemistry (Formalin/PFA-fixed paraffin-embedded sections) - Anti-MCEE antibody [OT11B5] (ab236397)

Paraffin-embedded human bladder tissue stained for MCEE using ab236397 at 1/150 dilution in immunohistochemical analysis.

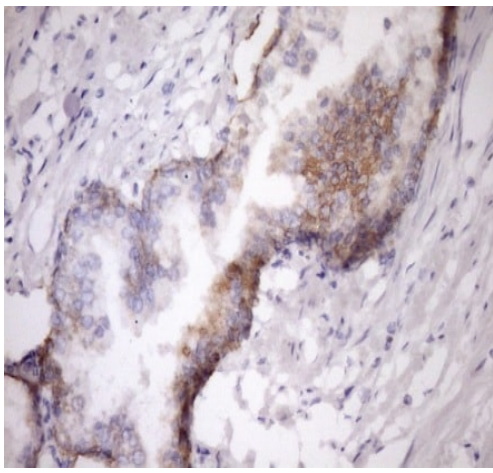
Heat-induced epitope retrieval was performed using Tris-EDTA, pH 8.0.



Immunohistochemistry (Formalin/PFA-fixed paraffin-embedded sections) - Anti-MCEE antibody [OT11B5] (ab236397)

Paraffin-embedded human prostate carcinoma tissue stained for MCEE using ab236397 at 1/150 dilution in immunohistochemical analysis.

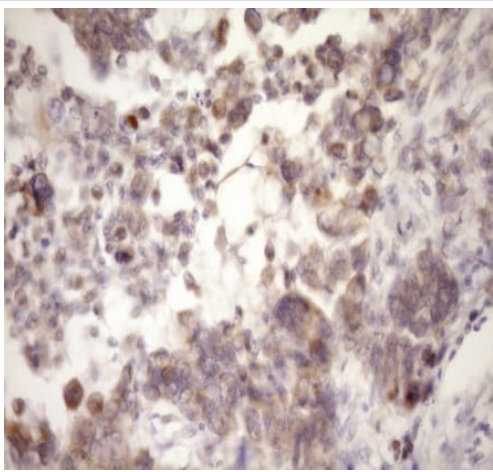
Heat-induced epitope retrieval was performed using Tris-EDTA, pH 8.0.



Immunohistochemistry (Formalin/PFA-fixed paraffin-embedded sections) - Anti-MCEE antibody [OT11B5] (ab236397)

Paraffin-embedded human prostate tissue stained for MCEE using ab236397 at 1/150 dilution in immunohistochemical analysis.

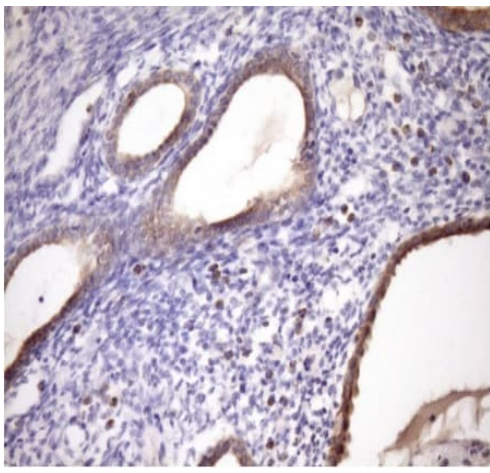
Heat-induced epitope retrieval was performed using Tris-EDTA, pH 8.0.



Immunohistochemistry (Formalin/PFA-fixed paraffin-embedded sections) - Anti-MCEE antibody [OT11B5] (ab236397)

Paraffin-embedded human endometrium adenocarcinoma tissue stained for MCEE using ab236397 at 1/150 dilution in immunohistochemical analysis.

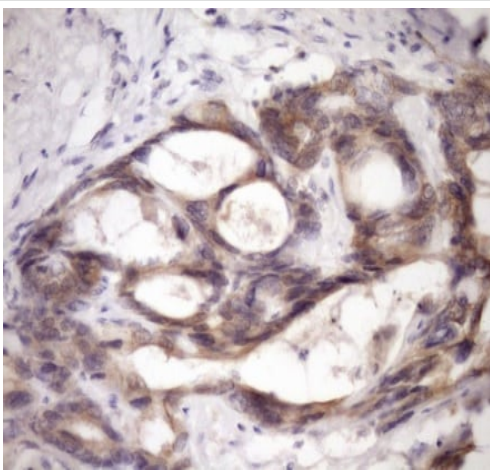
Heat-induced epitope retrieval was performed using Tris-EDTA, pH 8.0.



Immunohistochemistry (Formalin/PFA-fixed paraffin-embedded sections) - Anti-MCEE antibody [OT11B5] (ab236397)

Paraffin-embedded human pancreas carcinoma tissue stained for MCEE using ab236397 at 1/150 dilution in immunohistochemical analysis.

Heat-induced epitope retrieval was performed using Tris-EDTA, pH 8.0.



Immunohistochemistry (Formalin/PFA-fixed paraffin-embedded sections) - Anti-MCEE antibody [OT11B5] (ab236397)

Paraffin-embedded human colon adenocarcinoma tissue stained for MCEE using ab236397 at 1/150 dilution in immunohistochemical analysis.

Heat-induced epitope retrieval was performed using Tris-EDTA, pH 8.0.

Please note: All products are "FOR RESEARCH USE ONLY. NOT FOR USE IN DIAGNOSTIC PROCEDURES"

Our Abpromise to you: Quality guaranteed and expert technical support

- Replacement or refund for products not performing as stated on the datasheet
- Valid for 12 months from date of delivery
- Response to your inquiry within 24 hours
- We provide support in Chinese, English, French, German, Japanese and Spanish
- Extensive multi-media technical resources to help you
- We investigate all quality concerns to ensure our products perform to the highest standards

If the product does not perform as described on this datasheet, we will offer a refund or replacement. For full details of the Abpromise,

please visit <https://www.abcam.cn/abpromise> or contact our technical team.

Terms and conditions

- Guarantee only valid for products bought direct from Abcam or one of our authorized distributors