

Anti-MASH1/Achaete-scute homolog 1 antibody [EPR19840] ab211327

重组 RabMAb

★★★★★ **2 Abreviews** **17 References** **7 图像**

概述

产品名称	Anti-MASH1/Achaete-scute homolog 1 抗体[EPR19840]
描述	兔单克隆抗体[EPR19840] to MASH1/Achaete-scute homolog 1
宿主	Rabbit
经测试应用	适用于: IHC-P, WB, ICC/IF, IP
种属反应性	与反应: Mouse, Human
免疫原	Recombinant full length protein. This information is proprietary to Abcam and/or its suppliers.
阳性对照	WB: Mouse medullary thyroid cancer lysate; NCI-H69 whole cell lysate. IHC-P: Mouse small cell lung cancer section; Ascl1CreER/+; ROSA26mTmG/+ mouse thyroid tissue. ICC/IF: NCI-H69 cells. IP: Mouse medullary thyroid cancer lysate; NCI-H69 whole cell lysate.
常规说明	<p>This product is a recombinant monoclonal antibody, which offers several advantages including:</p> <ul style="list-style-type: none"> - High batch-to-batch consistency and reproducibility - Improved sensitivity and specificity - Long-term security of supply - Animal-free production <p>For more information see here.</p> <p>Our RabMAb[®] technology is a patented hybridoma-based technology for making rabbit monoclonal antibodies. For details on our patents, please refer to RabMAb[®] patents.</p>

性能

形式	Liquid
存放说明	Shipped at 4°C. Store at +4°C short term (1-2 weeks). Upon delivery aliquot. Store at -20°C long term. Avoid freeze / thaw cycle.
存储溶液	pH: 7.2 Preservative: 0.01% Sodium azide Constituents: 59% PBS, 40% Glycerol, 0.05% BSA
纯度	Protein A purified
克隆	单克隆

克隆编号 EPR19840

同种型 IgG

应用

The Abpromise guarantee **Abpromise™** 承诺保证使用 ab211327 于以下的经测试应用

“应用说明”部分 下显示的仅为推荐的起始稀释度；实际最佳的稀释度/浓度应由使用者检定。

应用	Ab评论	说明
IHC-P		1/100. Perform heat mediated antigen retrieval with citrate buffer pH 6 before commencing with IHC staining protocol.
WB		1/1000. Detects a band of approximately 30 kDa (predicted molecular weight: 25 kDa).
ICC/IF	★★★★★ (2)	1/100.
IP		1/30.

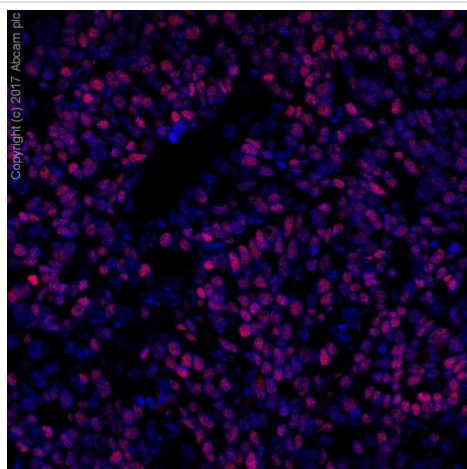
靶标

功能 May play a role at early stages of development of specific neural lineages in most regions of the CNS, and of several lineages in the PNS. Essential for the generation of olfactory and autonomic neurons. Activates transcription by binding to the E box (5'-CANNTG-3').

序列相似性 Contains 1 basic helix-loop-helix (bHLH) domain.

细胞定位 Nucleus.

图片



Immunohistochemistry (Formalin/PFA-fixed paraffin-embedded sections) - Anti-MASH1/Achaete-scute homolog 1 antibody [EPR19840] (ab211327)

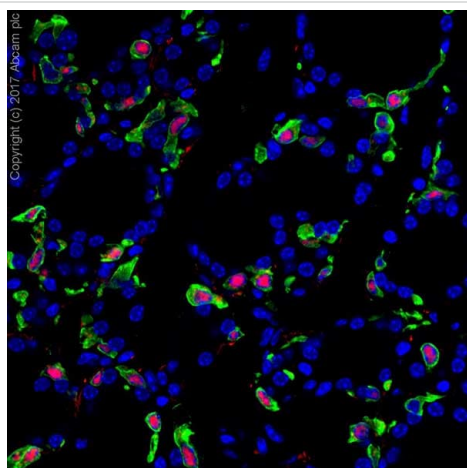
Immunohistochemical analysis of 4% paraformaldehyde-fixed mouse small cell lung cancer section labeling MASH1/Achaete-scute homolog 1 with ab211327 at 1/100 dilution, followed by Donkey anti Rabbit Alexa-594 at 1/500 dilution (red).

Nuclear counterstain: DAPI (blue).

Positive staining of MASH1/Achaete-scute homolog 1 on mouse small cell lung cancer.

The image was kindly provided by our collaborator Dr. Hai Song, Zhejiang University.

Perform heat mediated antigen retrieval with citrate buffer pH 6 before commencing with IHC staining protocol.



Immunohistochemistry (Formalin/PFA-fixed paraffin-embedded sections) - Anti-MASH1/Achaete-scute homolog 1 antibody [EPR19840] (ab211327)

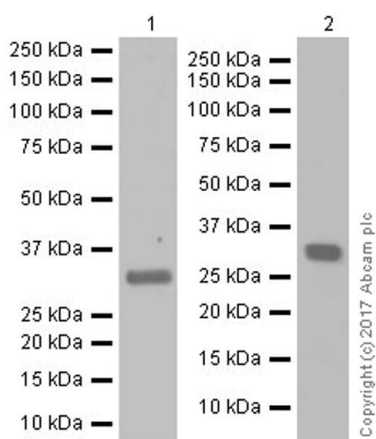
Immunohistochemical analysis of 4% paraformaldehyde-fixed *Ascl1*^{CreER/+}; *ROSA26*^{mTmG/+} mouse thyroid tissue labeling MASH1/Achaete-scute homolog 1 with ab211327 at 1/100 dilution, followed by Tyramide Signal Amplification (red).

Counterstain: DAPI (blue) and chick anti-GFP (green).

ROSA26^{mTmG/+} mice were bred with *Ascl1*^{CreER/+} mice, in which the *Ascl1* promoter drives the expression of Cre, to generate mice carrying the genotype of *Ascl1*^{CreER/+}; *ROSA26*^{mTmG/+}. Cre activation upon Tamoxifen administration resulted in eGFP expression from the *ROSA26*^{mTmG/+} allele. The thyroid tissue from *Ascl1*^{CreER/+}; *ROSA26*^{mTmG/+} mouse was fixed and embedded in paraffin. Paraffin section was stained with rabbit anti-MASH1/Achaete-scute homolog 1 (ab211327) antibody (Red color) and chick anti-GFP antibody (Green color). Tyramide signal amplification was used for high-resolution imaging of low-abundance targets.

The image was kindly provided by our collaborator Dr. Hai Song, Zhejiang University.

Perform heat mediated antigen retrieval with citrate buffer pH 6 before commencing with IHC staining protocol.



Western blot - Anti-MASH1/Achaete-scute homolog 1 antibody [EPR19840] (ab211327)

All lanes : Anti-MASH1/Achaete-scute homolog 1 antibody [EPR19840] (ab211327) at 1/1000 dilution

Lane 1 : Mouse medullary thyroid cancer lysate at 20 µg

Lane 2 : NCI-H69 (Human small cell lung cancer cell line) whole cell lysate at 10 µg

Secondary

All lanes : Goat Anti-Rabbit IgG H&L (HRP) ([ab97051](#)) at 1/100000 dilution

Predicted band size: 25 kDa

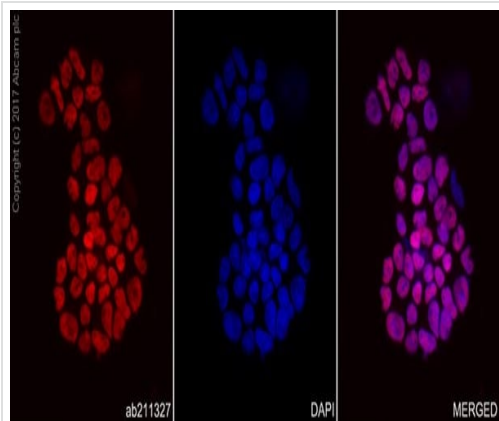
Observed band size: 30 kDa

Blocking/Dilution buffer: 5% NFDm/TBST.

Exposure time: Lane 1: 15 seconds; Lane 2: 10 seconds

Ascl1 is highly expressed in medullary thyroid cancer and small cell lung cancer (PMID: 17090547 and 25267614). Our results showed

specific band on mouse medullary thyroid cancer lysate and NCI-H69 (Human small cell lung cancer) lysate. The lysates were kindly provided by our collaborator Dr. Hai Song, Zhejiang University.



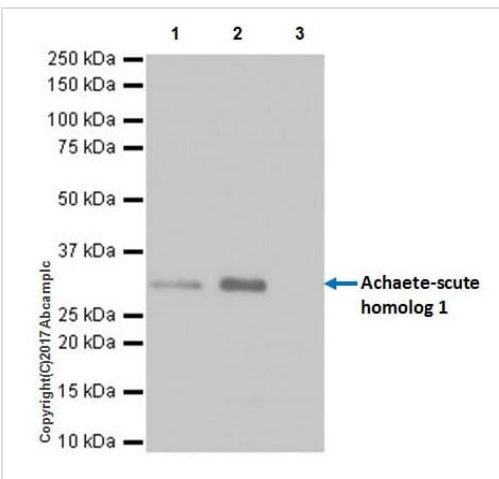
Immunocytochemistry/ Immunofluorescence - Anti-MASH1/Achaete-scute homolog 1 antibody [EPR19840] (ab211327)

Immunofluorescent analysis of 4% paraformaldehyde-fixed, 0.5% Triton X-100 permeabilized NCI-H69 Human small cell lung cancer cells labeling MASH1/Achaete-scute homolog 1 with ab211327 at 1/100 dilution (red).

The nuclear counterstain is DAPI (blue).

Nuclear MASH1/Achaete-scute homolog 1 staining on NCI-H69 cells.

The images were kindly provided by our collaborator Dr. Hai Song, Zhejiang University.



Immunoprecipitation - Anti-MASH1/Achaete-scute homolog 1 antibody [EPR19840] (ab211327)

MASH1/Achaete-scute homolog 1 was immunoprecipitated from 0.35 mg of mouse medullary thyroid cancer lysate with ab211327 at 1/30 dilution. Western blot was performed from the immunoprecipitate using ab211327 at 1/1000 dilution. VeriBlot for IP Detection Reagent (HRP) (**ab131366**), was used for detection at 1/10,000 dilution

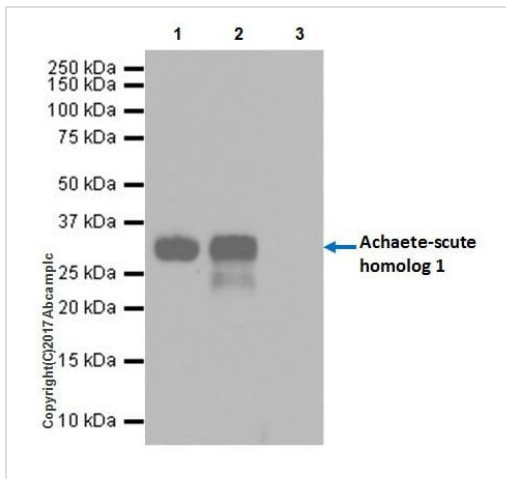
Lane 1: Mouse medullary thyroid cancer lysate 10 μ g (Input).

Lane 2: ab211327 IP in mouse medullary thyroid cancer lysate.

Lane 3: Rabbit monoclonal IgG (**ab172730**) instead of ab211327 in mouse medullary thyroid cancer lysate.

Blocking and dilution buffer and concentration: 5% NFDm/TBST.

Exposure time: 3 minutes.



Immunoprecipitation - Anti-MASH1/Achaete-scute homolog 1 antibody [EPR19840] (ab211327)

MASH1/Achaete-scute homolog 1 was immunoprecipitated from 0.35 mg of NCI-H69 (Human small cell lung cancer cell line) whole cell lysate with ab211327 at 1/30 dilution. Western blot was performed from the immunoprecipitate using ab211327 at 1/1000 dilution. VeriBlot for IP Detection Reagent (HRP) (**ab131366**), was used for detection at 1/10,000 dilution

Lane 1: NCI-H69 whole cell lysate 10 µg (Input).





Lane 2: ab211327 IP in NCI-H69 whole cell lysate.

Lane 3: Rabbit monoclonal IgG (**ab172730**) instead of ab211327 in NCI-H69 whole cell lysate.

Blocking and dilution buffer and concentration: 5% NFD/MTBST.

Exposure time: 3 minutes.

Why choose a recombinant antibody?

 <p>Research with confidence Consistent and reproducible results</p>	 <p>Long-term and scalable supply Recombinant technology</p>
 <p>Success from the first experiment Confirmed specificity</p>	 <p>Ethical standards compliant Animal-free production</p>

Anti-MASH1/Achaete-scute homolog 1 antibody [EPR19840] (ab211327)

Please note: All products are "FOR RESEARCH USE ONLY. NOT FOR USE IN DIAGNOSTIC PROCEDURES"

Our Abpromise to you: Quality guaranteed and expert technical support

- Replacement or refund for products not performing as stated on the datasheet
- Valid for 12 months from date of delivery
- Response to your inquiry within 24 hours
- We provide support in Chinese, English, French, German, Japanese and Spanish
- Extensive multi-media technical resources to help you
- We investigate all quality concerns to ensure our products perform to the highest standards

If the product does not perform as described on this datasheet, we will offer a refund or replacement. For full details of the Abpromise, please visit <https://www.abcam.cn/abpromise> or contact our technical team.

Terms and conditions

- Guarantee only valid for products bought direct from Abcam or one of our authorized distributors