


# Anti-MASH1/Achaete-scute homolog 1 antibody [EPR19592] ab213151

 **RabMAb**

## 2 References 7 图像

### 概述

产品名称	Anti-MASH1/Achaete-scute homolog 1 抗体[EPR19592]
描述	兔单克隆抗体[EPR19592] to MASH1/Achaete-scute homolog 1
宿主	Rabbit
经测试应用	适用于: IHC-P
种属反应性	与反应: Human 预测可用于: Mouse 
免疫原	Synthetic peptide. This information is proprietary to Abcam and/or its suppliers.
阳性对照	IHC-P: Human medullary thyroid carcinoma and lung small cell carcinoma tissues.
常规说明	This product is a recombinant monoclonal antibody, which offers several advantages including: <ul style="list-style-type: none"> <li>- High batch-to-batch consistency and reproducibility</li> <li>- Improved sensitivity and specificity</li> <li>- Long-term security of supply</li> <li>- Animal-free production</li> </ul> For more information <a href="#">see here</a> . Our RabMAb <sup>®</sup> technology is a patented hybridoma-based technology for making rabbit monoclonal antibodies. For details on our patents, please refer to <a href="#">RabMAb<sup>®</sup> patents</a> .

### 性能

形式	Liquid
存放说明	Shipped at 4°C. Store at +4°C short term (1-2 weeks). Upon delivery aliquot. Store at -20°C long term. Avoid freeze / thaw cycle.
存储溶液	pH: 7.2 Preservative: 0.01% Sodium azide Constituents: 59% PBS, 40% Glycerol, 0.05% BSA
纯度	Protein A purified
克隆	单克隆
克隆编号	EPR19592

同种型

lgG

应用

The Abpromise guarantee

Abpromise™承诺保证使用ab213151于以下的经测试应用

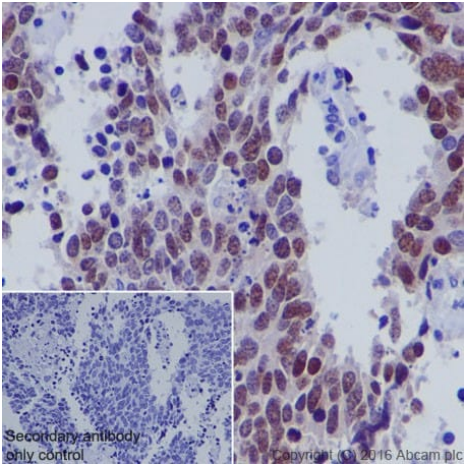
“应用说明”部分 下显示的仅为推荐的起始稀释度;实际最佳的稀释度/浓度应由使用者检定。

应用	Ab评论	说明
IHC-P		1/1000. Perform heat mediated antigen retrieval with Tris/EDTA buffer pH 9.0 before commencing with IHC staining protocol.

靶标

功能	May play a role at early stages of development of specific neural lineages in most regions of the CNS, and of several lineages in the PNS. Essential for the generation of olfactory and autonomic neurons. Activates transcription by binding to the E box (5'-CANNTG-3').
序列相似性	Contains 1 basic helix-loop-helix (bHLH) domain.
细胞定位	Nucleus.

图片

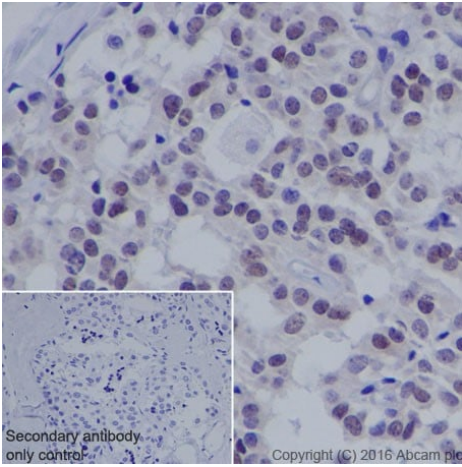


Immunohistochemistry (Formalin/PFA-fixed paraffin-embedded sections) - Anti-MASH1/Achaete-scute homolog 1 antibody [EPR19592] (ab213151)

Immunohistochemical analysis of paraffin-embedded human lung small cell carcinoma tissue labeling MASH1/Achaete-scute homolog 1 with ab213151 at 1/1000 dilution, followed by Goat Anti-Rabbit IgG H&L (HRP) at 1/500 dilution. Nuclear staining on human lung small cell carcinoma is observed. Counter stained with Hematoxylin.

Secondary antibody only control: Used PBS instead of primary antibody, secondary antibody is Goat Anti-Rabbit IgG H&L (HRP) at 1/500 dilution.

Perform heat mediated antigen retrieval with Tris/EDTA buffer pH 9.0 before commencing with IHC staining protocol.

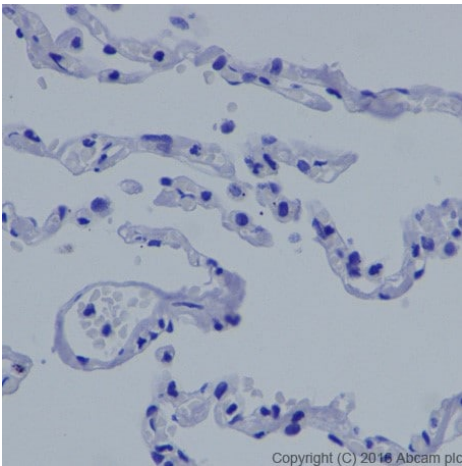


Immunohistochemistry (Formalin/PFA-fixed paraffin-embedded sections) - Anti-MASH1/Achaete-scute homolog 1 antibody [EPR19592] (ab213151)

Immunohistochemical analysis of paraffin-embedded human medullary thyroid carcinoma tissue labeling MASH1/Achaete-scute homolog 1 with ab213151 at 1/1000 dilution, followed by Goat Anti-Rabbit IgG H&L (HRP) at 1/500 dilution. Nuclear staining on human medullary thyroid carcinoma is observed. Counter stained with Hematoxylin.

Secondary antibody only control: Used PBS instead of primary antibody, secondary antibody is Goat Anti-Rabbit IgG H&L (HRP) at 1/500 dilution.

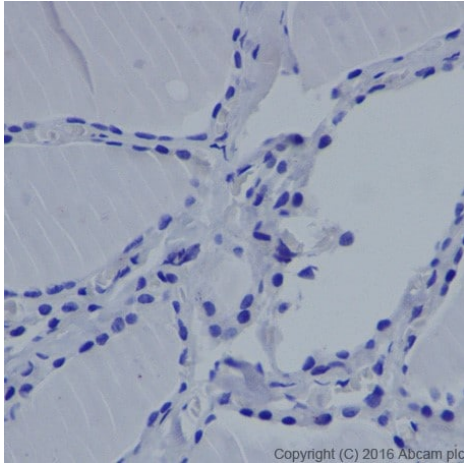
Perform heat mediated antigen retrieval with Tris/EDTA buffer pH 9.0 before commencing with IHC staining protocol.



Immunohistochemistry (Formalin/PFA-fixed paraffin-embedded sections) - Anti-MASH1/Achaete-scute homolog 1 antibody [EPR19592] (ab213151)

Immunohistochemical analysis of paraffin-embedded human lung tissue labeling MASH1/Achaete-scute homolog 1 with ab213151 at 1/1000 dilution, followed by Goat Anti-Rabbit IgG H&L (HRP) at 1/500 dilution. Negative staining on human lung. Counter stained with Hematoxylin.

Perform heat mediated antigen retrieval with Tris/EDTA buffer pH 9.0 before commencing with IHC staining protocol.

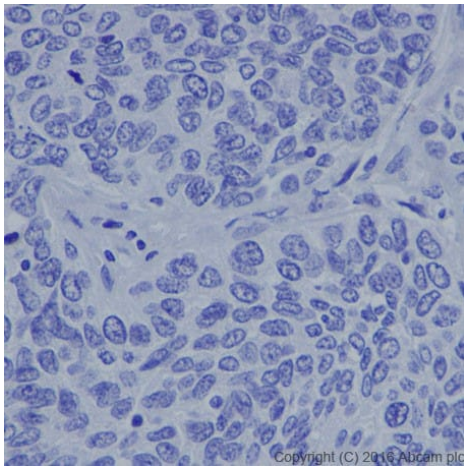


Copyright (C) 2016 Abcam plc

Immunohistochemistry (Formalin/PFA-fixed paraffin-embedded sections) - Anti-MASH1/Achaete-scute homolog 1 antibody [EPR19592] (ab213151)

Immunohistochemical analysis of paraffin-embedded human thyroid tissue labeling MASH1/Achaete-scute homolog 1 with ab213151 at 1/1000 dilution, followed by Goat Anti-Rabbit IgG H&L (HRP) at 1/500 dilution. Negative staining on human thyroid. Counter stained with Hematoxylin.

Perform heat mediated antigen retrieval with Tris/EDTA buffer pH 9.0 before commencing with IHC staining protocol.



Copyright (C) 2016 Abcam plc

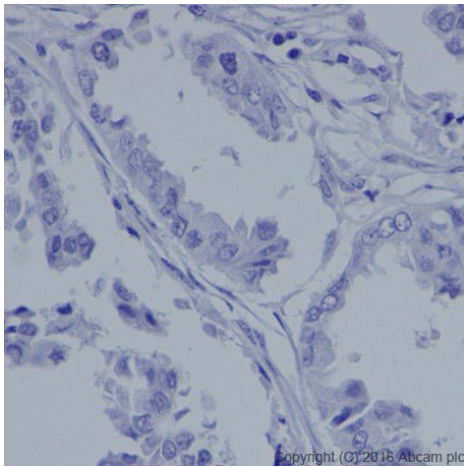
Immunohistochemistry (Formalin/PFA-fixed paraffin-embedded sections) - Anti-MASH1/Achaete-scute homolog 1 antibody [EPR19592] (ab213151)

Immunohistochemical analysis of paraffin-embedded human lung squamous cell carcinoma tissue labeling MASH1/Achaete-scute homolog 1 with ab213151 at 1/1000 dilution, followed by Goat Anti-Rabbit IgG H&L (HRP) at 1/500 dilution.

Negative staining on human lung squamous cell carcinoma.

Counter stained with Hematoxylin.

Perform heat mediated antigen retrieval with Tris/EDTA buffer pH 9.0 before commencing with IHC staining protocol.



Immunohistochemistry (Formalin/PFA-fixed paraffin-embedded sections) - Anti-MASH1/Achaete-scute homolog 1 antibody [EPR19592] (ab213151)

Immunohistochemical analysis of paraffin-embedded human lung adenocarcinoma tissue labeling MASH1/Achaete-scute homolog 1 with ab213151 at 1/1000 dilution, followed by Goat Anti-Rabbit IgG H&L (HRP) at 1/500 dilution. Negative staining on human lung adenocarcinoma.

Counter stained with Hematoxylin.

Perform heat mediated antigen retrieval with Tris/EDTA buffer pH 9.0 before commencing with IHC staining protocol.

#### Why choose a recombinant antibody?



**Research with confidence**  
Consistent and reproducible results



**Long-term and scalable supply**  
Recombinant technology



**Success from the first experiment**  
Confirmed specificity



**Ethical standards compliant**  
Animal-free production

Anti-MASH1/Achaete-scute homolog 1 antibody  
[EPR19592] (ab213151)

**Please note:** All products are "FOR RESEARCH USE ONLY. NOT FOR USE IN DIAGNOSTIC PROCEDURES"

#### Our Abpromise to you: Quality guaranteed and expert technical support

- Replacement or refund for products not performing as stated on the datasheet
- Valid for 12 months from date of delivery
- Response to your inquiry within 24 hours

- We provide support in Chinese, English, French, German, Japanese and Spanish
- Extensive multi-media technical resources to help you
- We investigate all quality concerns to ensure our products perform to the highest standards

If the product does not perform as described on this datasheet, we will offer a refund or replacement. For full details of the Abpromise, please visit <https://www.abcam.cn/abpromise> or contact our technical team.

#### **Terms and conditions**

---

- Guarantee only valid for products bought direct from Abcam or one of our authorized distributors