


### Anti-MARK2 antibody [EPR8553] ab133724

敲除验证
重组
RabMAb

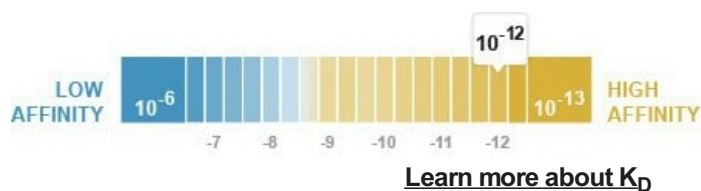
★★★★☆
[1 Abreviews](#)
[5 References](#)
[5 图像](#)

#### 概述

<b>产品名称</b>	Anti-MARK2抗体[EPR8553]
<b>描述</b>	兔单克隆抗体[EPR8553] to MARK2
<b>宿主</b>	Rabbit
<b>经测试应用</b>	<b>适用于:</b> Flow Cyt (Intra), WB <b>不适用于:</b> ICC/IF, IHC-P or IP
<b>种属反应性</b>	<b>与反应:</b> Mouse, Human <b>预测可用于:</b> Rat 
<b>免疫原</b>	Synthetic peptide. This information is proprietary to Abcam and/or its suppliers.
<b>阳性对照</b>	Raji cells; RAW 264.7, NIH/3T3, Neuro-2a, Jurkat, Raji and U-87 MG cell lysates.
<b>常规说明</b>	<p>This product is a recombinant monoclonal antibody, which offers several advantages including:</p> <ul style="list-style-type: none"> <li>- High batch-to-batch consistency and reproducibility</li> <li>- Improved sensitivity and specificity</li> <li>- Long-term security of supply</li> <li>- Animal-free production</li> </ul> <p>For more information <a href="#">see here</a>.</p> <p>Our RabMAb<sup>®</sup> technology is a patented hybridoma-based technology for making rabbit monoclonal antibodies. For details on our patents, please refer to <a href="#">RabMAb<sup>®</sup> patents</a>.</p>

#### 性能

<b>形式</b>	Liquid
<b>存放说明</b>	Shipped at 4°C. Store at -20°C. Stable for 12 months at -20°C.
<b>解离常数 (K<sub>D</sub>)</b>	K <sub>D</sub> = 1.70 x 10 <sup>-12</sup> M



<b>存储溶液</b>	pH: 7.20
-------------	----------

Preservative: 0.01% Sodium azide  
Constituents: 9% PBS, 40% Glycerol (glycerin, glycerine), 0.05% BSA, 50% Tissue culture supernatant

**纯度** Tissue culture supernatant  
**克隆** 单克隆  
**克隆编号** EPR8553  
**同种型** IgG

## 应用

**The Abpromise guarantee** **Abpromise™** 承诺保证使用ab133724于以下的经测试应用

“应用说明”部分 下显示的仅为推荐的起始稀释度;实际最佳的稀释度/浓度应由使用者检定。

应用	Ab评论	说明
Flow Cyt (Intra)		1/100 - 1/500. <b>ab172730</b> - Rabbit monoclonal IgG, is suitable for use as an isotype control with this antibody.
WB	★★★★★ (1)	1/1000 - 1/10000. Predicted molecular weight: 88 kDa.

**应用说明** Is unsuitable for ICC/IF, IHC-P or IP.

## 靶标

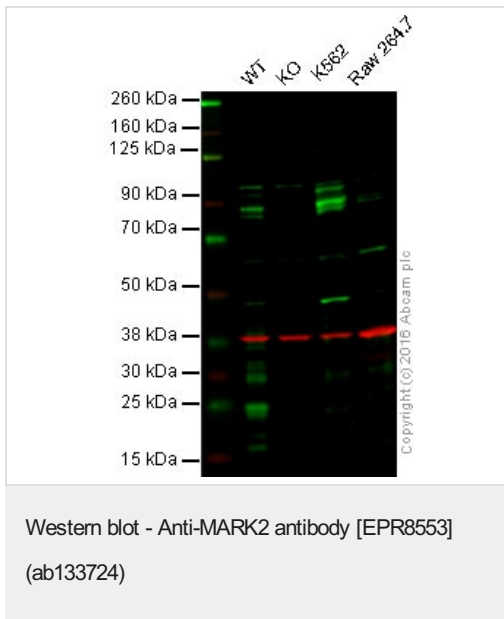
**功能** Role in epithelial morphogenesis. Modulates the developmental decision to build a columnar versus a hepatic epithelial cell apparently by promoting a switch from a direct to a transcytotic mode of apical protein delivery. Essential for the asymmetric development of membrane domains of polarized epithelial cells. One or more isoforms may play a role in graft rejection.

**组织特异性** High levels of expression in heart, brain, skeletal muscle and pancreas, lower levels observed in lung, liver and kidney.

**序列相似性** Belongs to the protein kinase superfamily. CAMK Ser/Thr protein kinase family. MARK subfamily. Contains 1 KA1 (kinase-associated) domain.  
Contains 1 protein kinase domain.  
Contains 1 UBA domain.

**细胞定位** Cell membrane. Phosphorylated by PRKCZ in polarized epithelial cells, resulting in an interaction with YWHAZ which promotes relocation from the lateral to the apical membrane.

## 图片



**Lane 1:** Wild-type HAP1 cell lysate (20 µg)

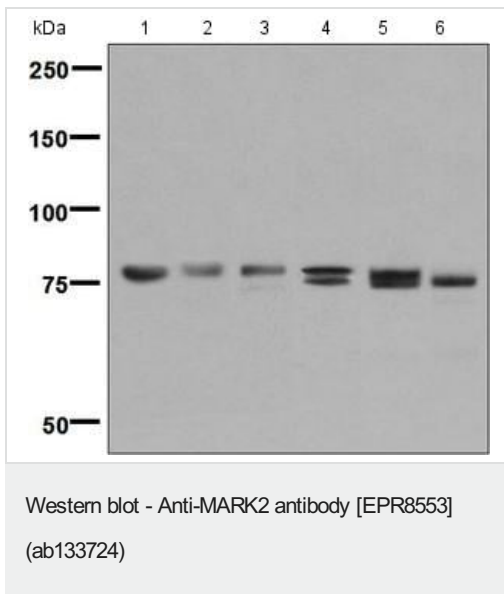
**Lane 2:** MARK2 knockout HAP1 cell lysate (20 µg)

**Lane 3:** K562 cell lysate (20 µg)

**Lane 4:** Raw264.7 cell lysate (20 µg)

**Lanes 1 - 4:** Merged signal (red and green). Green - ab133724 observed at 75 kDa. Red - loading control, **ab8245**, observed at 37 kDa.

ab133724 was shown to recognize MARK2 when MARK2 knockout samples were used, along with additional cross-reactive bands. Wild-type and MARK2 knockout samples were subjected to SDS-PAGE. ab133724 and **ab8245** (loading control to GAPDH) were diluted 1/1000 and 1/10000 respectively and incubated overnight at 4°C. Blots were developed with Goat anti-Rabbit IgG H&L (IRDye® 800CW) preadsorbed (**ab216773**) and Goat anti-Mouse IgG H&L (IRDye® 680RD) preadsorbed (**ab216776**) secondary antibodies at 1/10000 dilution for 1 hour at room temperature before imaging.



**All lanes :** Anti-MARK2 antibody [EPR8553] (ab133724) at 1/1000 dilution

**Lane 1 :** RAW 264.7 cell lysate

**Lane 2 :** NIH/3T3 cell lysate

**Lane 3 :** Neuro-2a cell lysate

**Lane 4 :** Jurkat cell lysate

**Lane 5 :** Raji cell lysate

**Lane 6 :** U-87 MG (Human glioblastoma-astrocytoma epithelial cell line) cell lysate

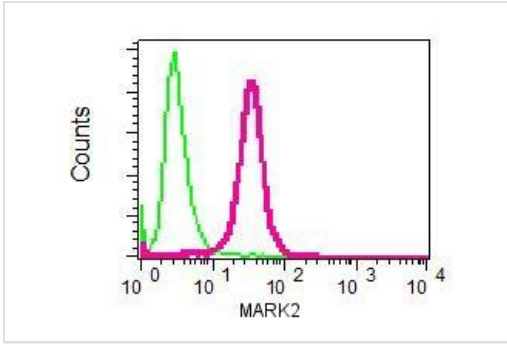
Lysates/proteins at 10 µg per lane.

### Secondary

**All lanes :** Standard HRP labelled goat anti-rabbit at 1/2000 dilution

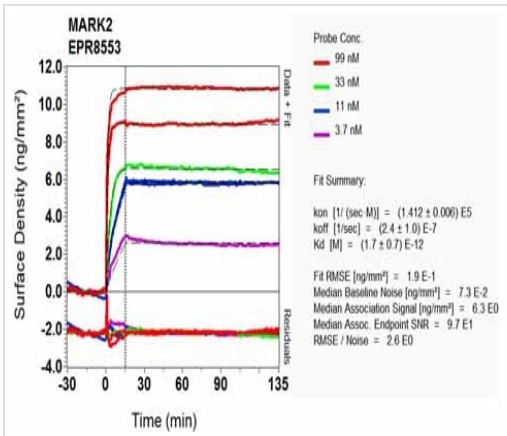
Developed using the ECL technique.

**Predicted band size:** 88 kDa



Intracellular Flow Cytometry analysis of permeabilized Raji cells staining MARK2, using ab133724 at a 1/100 dilution (red) or a control rabbit IgG antibody (green).

Flow Cytometry (Intracellular) - Anti-MARK2 antibody [EPR8553] (ab133724)



Equilibrium dissociation constant ( $K_D$ )

Learn more about  $K_D$

[Click here to learn more about  \$K\_D\$](#)

OIR-D Scanning - Anti-MARK2 antibody [EPR8553] (ab133724)

**Why choose a recombinant antibody?**

**Research with confidence**  
Consistent and reproducible results

**Long-term and scalable supply**  
Recombinant technology

**Success from the first experiment**  
Confirmed specificity

**Ethical standards compliant**  
Animal-free production

Anti-MARK2 antibody [EPR8553] (ab133724)

**Please note:** All products are "FOR RESEARCH USE ONLY. NOT FOR USE IN DIAGNOSTIC PROCEDURES"

**Our Abpromise to you: Quality guaranteed and expert technical support**

- Replacement or refund for products not performing as stated on the datasheet
- Valid for 12 months from date of delivery
- Response to your inquiry within 24 hours
  
- We provide support in Chinese, English, French, German, Japanese and Spanish
- Extensive multi-media technical resources to help you
- We investigate all quality concerns to ensure our products perform to the highest standards

If the product does not perform as described on this datasheet, we will offer a refund or replacement. For full details of the Abpromise, please visit <https://www.abcam.cn/abpromise> or contact our technical team.

### **Terms and conditions**

---

- Guarantee only valid for products bought direct from Abcam or one of our authorized distributors