

Anti-MAP4 antibody ab245578

[3 References](#) [3 图像](#)

概述

产品名称	Anti-MAP4抗体
描述	兔多克隆抗体to MAP4
宿主	Rabbit
经测试应用	适用于: WB, IHC-P, IP
种属反应性	与反应: Human 预测可用于: Mouse, Rat 
免疫原	Synthetic peptide within Human MAP4 aa 1102-1152. The exact sequence is proprietary. NP_002366.2 Database link: P27816
阳性对照	WB: HeLa whole cell lysate. IP: HeLa whole cell lysate. IHC-P: Human ovarian carcinoma tissue.
常规说明	<p>The Life Science industry has been in the grips of a reproducibility crisis for a number of years. Abcam is leading the way in addressing this with our range of recombinant monoclonal antibodies and knockout edited cell lines for gold-standard validation. Please check that this product meets your needs before purchasing.</p> <p>If you have any questions, special requirements or concerns, please send us an inquiry and/or contact our Support team ahead of purchase. Recommended alternatives for this product can be found below, along with publications, customer reviews and Q&As</p>

性能

形式	Liquid
存放说明	Shipped at 4°C. Store at +4°C short term (1-2 weeks). Upon delivery aliquot. Store at -20°C long term. Avoid freeze / thaw cycle.
存储溶液	pH: 6.8 Preservative: 0.09% Sodium azide Constituents: Tris buffered saline, 0.1% BSA
纯度	Immunogen affinity purified
纯化说明	ab245578 was affinity purified using an epitope specific to MAP4 immobilized on solid support.
克隆	多克隆
同种型	IgG

应用

The Abpromise guarantee

Abpromise™ 承诺保证使用 ab245578 于以下的经测试应用

“应用说明”部分 下显示的仅为推荐的起始稀释度;实际最佳的稀释度/浓度应由使用者检定。

应用	Ab评论	说明
WB		1/2000 - 1/10000. Predicted molecular weight: 121 kDa.
IHC-P		1/100 - 1/500. Perform heat mediated antigen retrieval with citrate buffer pH 6 before commencing with IHC staining protocol.
IP		Use at 2-5 µg/mg of lysate.

靶标

功能

Non-neuronal microtubule-associated protein. Promotes microtubule assembly.

序列相似性

Contains 4 Tau/MAP repeats.

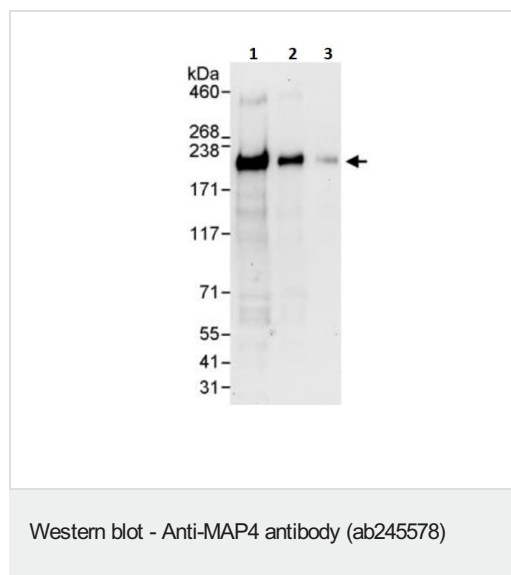
翻译后修饰

Phosphorylated upon DNA damage, probably by ATM or ATR (By similarity). Phosphorylation on Ser-787 negatively regulates MAP4 activity to promote microtubule assembly. Isoform 3 is phosphorylated on Ser-337 and Ser-338.

细胞定位

Cytoplasm > cytoskeleton.

图片



All lanes : Anti-MAP4 antibody (ab245578) at 0.04 µg/ml

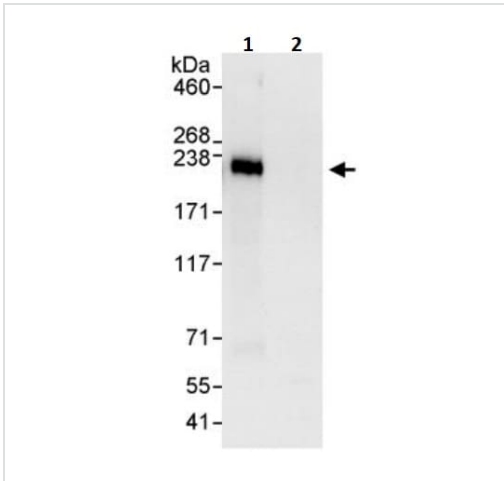
Lane 1 : HeLa (Human epithelial cell line from cervix adenocarcinoma) whole cell lysate at 50 µg

Lane 2 : HeLa whole cell lysate at 15 µg

Lane 3 : HeLa whole cell lysate at 5 µg

Predicted band size: 121 kDa

Exposure time: 30 seconds



Immunoprecipitation - Anti-MAP4 antibody
(ab245578)

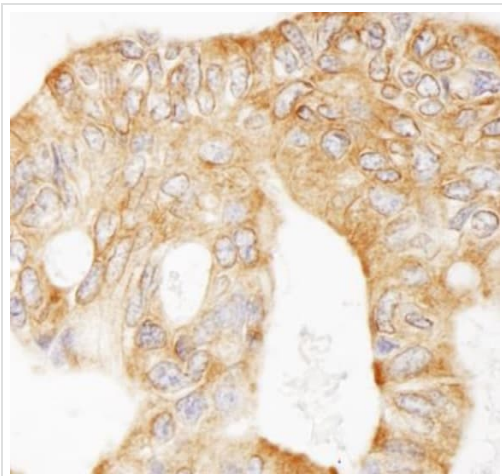
MAP4 was immunoprecipitated from HeLa (Human epithelial cell line from cervix adenocarcinoma) whole cell lysate (1 mg per IP reaction; 20% of IP loaded).

ab245578 used for IP at 3 µg/mg lysate. For WB 0.01 µg/ml.

Lane 1: ab245578 IP in HeLa whole cell lysate.

Lane 2: Control IgG in HeLa whole cell lysate.

Chemiluminescence detection: 30 seconds.



Immunohistochemistry (Formalin/PFA-fixed paraffin-embedded sections) - Anti-MAP4 antibody
(ab245578)

Formalin-fixed, paraffin-embedded human ovarian carcinoma tissue stained for MAP4 with ab245578 at a 1/200 dilution in immunohistochemical analysis. DAB staining.

Please note: All products are "FOR RESEARCH USE ONLY. NOT FOR USE IN DIAGNOSTIC PROCEDURES"

Our Abpromise to you: Quality guaranteed and expert technical support

- Replacement or refund for products not performing as stated on the datasheet
- Valid for 12 months from date of delivery
- Response to your inquiry within 24 hours

- We provide support in Chinese, English, French, German, Japanese and Spanish
- Extensive multi-media technical resources to help you
- We investigate all quality concerns to ensure our products perform to the highest standards

If the product does not perform as described on this datasheet, we will offer a refund or replacement. For full details of the Abpromise, please visit <https://www.abcam.cn/abpromise> or contact our technical team.

Terms and conditions

- Guarantee only valid for products bought direct from Abcam or one of our authorized distributors