

### Anti-MAP2 antibody ab5392

★★★★★ [63 Abreviews](#) [682 References](#) [7 图像](#)

#### 概述

产品名称	Anti-MAP2抗体
描述	鸡多克隆抗体to MAP2
宿主	Chicken
经测试应用	适用于: ICC, IHC-P, WB
种属反应性	与反应: Mouse, Rat
免疫原	Recombinant fragment corresponding to Human MAP2. Mix of recombinant human constructs of projection domain sequences, amino acids 235-1588.
阳性对照	IHC-P: Rat cerebellum tissue. ICC: Rat E20 cultured cortical neuron-glia cells, rat cortical neurons, rat cortical neurons and glia in mixed tissue culture and mouse neurons. WB: Adult rat brain, Embryonic E20 rat brain and Adult mouse brain lysates.
常规说明	<p>The Life Science industry has been in the grips of a reproducibility crisis for a number of years. Abcam is leading the way in addressing this with our range of recombinant monoclonal antibodies and knockout edited cell lines for gold-standard validation. Please check that this product meets your needs before purchasing.</p> <p>If you have any questions, special requirements or concerns, please send us an inquiry and/or contact our Support team ahead of purchase. Recommended alternatives for this product can be found below, along with publications, customer reviews and Q&amp;As</p>

#### 性能

形式	Liquid
存放说明	Shipped at 4°C. Store at +4°C. Do Not Freeze.
存储溶液	Preservative: 0.032% Sodium azide Constituent: PBS
纯化说明	Lipid extraction from egg yolk, followed by ammonium sulphate precipitation.
克隆	多克隆
同种型	IgY

#### 应用

## The Abpromise guarantee

**Abpromise™** 承诺保证使用ab5392于以下的经测试应用

“应用说明”部分 下显示的仅为推荐的起始稀释度;实际最佳的稀释度/浓度应由使用者检定。

应用	Ab评论	说明
ICC	★★★★★ (4)	1/5000 - 1/10000.
IHC-P	★★★★★ (13)	1/10000.
WB	★★★★★ (6)	1/20000 - 1/100000. This 280kDa band corresponds to the high molecular weight MAP2a and MAP2b isoforms. Also detects 2 bands at approximately 70 kDa, corresponding to MAPc, since the 70kDa bands are transcripts from the same gene and correspond to the C-terminus of the 280kDa bands.

## 靶标

### 功能

The exact function of MAP2 is unknown but MAPs may stabilize the microtubules against depolymerization. They also seem to have a stiffening effect on microtubules.

### 序列相似性

Contains 3 Tau/MAP repeats.

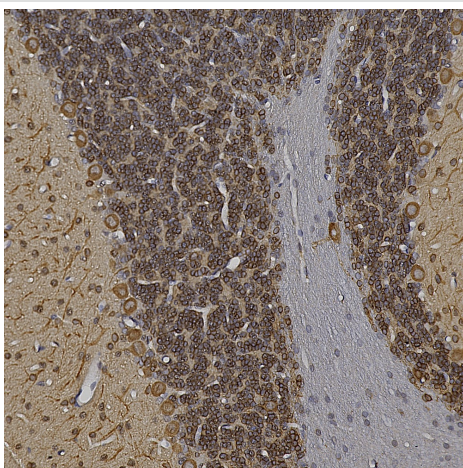
### 翻译后修饰

Phosphorylated at serine residues in K-X-G-S motifs by MAP/microtubule affinity-regulating kinase (MARK1 or MARK2), causing detachment from microtubules, and their disassembly (By similarity). Isoform 2 is probably phosphorylated by PKA at Ser-323, Ser-354 and Ser-386 and by FYN at Tyr-67.

### 细胞定位

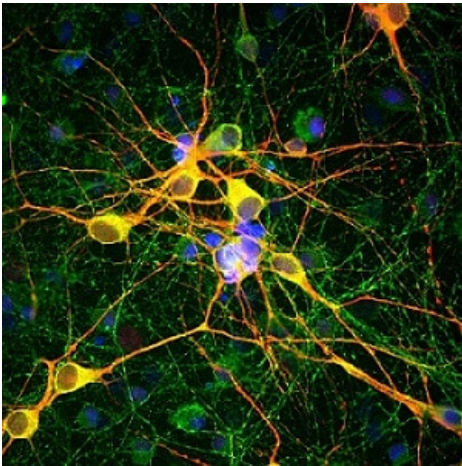
Cytoplasm, cytoskeleton.

## 图片



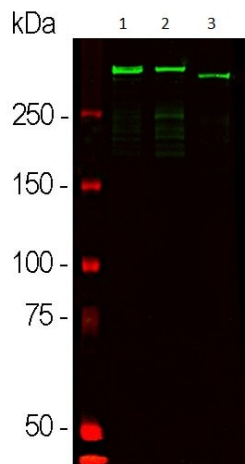
Chromogenic Immunostaining of a formalin fixed paraffin embedded rat cerebellum section with chicken pAb to MAP2A/B dilution 1/10000, detected in DAB (brown) following the ABC method. Hematoxylin (blue) was used as the counterstain. ab5392 detects neuronal cells, specifically their perikarya and dendrites. Note the prominent staining of Purkinje cells and their dendrites in the molecular layer and staining of the much smaller granule neurons in the granular layer.

Immunohistochemistry (Formalin/PFA-fixed paraffin-embedded sections) - Anti-MAP2 antibody (ab5392)



Immunocytochemistry - Anti-MAP2 antibody  
(ab5392)

Rat E20 cultured cortical neuron-glial cells stained for MAP2 (red) using ab5392 at 1/10000 dilution for ICC/IF. Tau is detected with a mouse monoclonal anti-Tau antibody (green). The nuclear counter stain is DAPI (blue). Overlap of MAP2 and Tau staining results in an orange-yellow color.



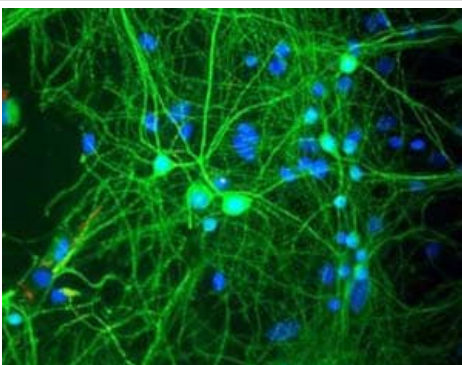
Western blot - Anti-MAP2 antibody (ab5392)

**All lanes :** Anti-MAP2 antibody (ab5392) at 1/50000 dilution

**Lane 1 :** Adult rat brain lysate

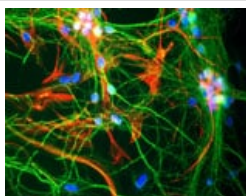
**Lane 2 :** Embryonic E20 rat brain lysate

**Lane 3 :** Adult mouse brain lysate



Immunocytochemistry - Anti-MAP2 antibody  
(ab5392)

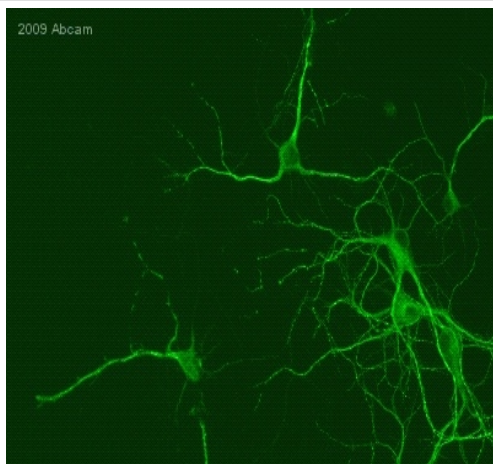
ab5392 at a dilution of 1/10000, staining MAP 2 (green) in tissue cultured rat cortical neurons by immunofluorescence. Nuclei are stained blue with Dapi.



Immunocytochemistry - Anti-MAP2 antibody  
(ab5392)

Rat cortical neurons and glia in mixed tissue culture stained with ab5392 (Chicken antibody to MAP2) (green)(1:30 000), a mouse monoclonal antibody to GFAP (red) and nuclei of all cells stained with Hoechst dye (blue).

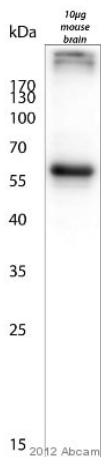
2009 Abcam



Immunocytochemistry - Anti-MAP2 antibody  
(ab5392)

This image is courtesy of an anonymous Abreview

ab5392 staining MAP2 in mouse neurons by immunocytochemistry/immunofluorescence. Cells were PFA fixed and permeabilized in 0.4% Triton X-100 prior to blocking in 5% serum for 1 hour at 25°C. The primary antibody was diluted 1/10000 and incubated with the sample for 20 hours at 21°C. Alexa fluor® 488 goat polyclonal to chicken IgY, diluted 1/400, was used as the secondary antibody.



Western blot - Anti-MAP2 antibody (ab5392)

This image is courtesy of an anonymous Abreview

Anti-MAP2 antibody (ab5392) at 1/10000 dilution + Mouse brain lysate - post nuclear supernatant at 10 µg

### Secondary

HRP-conjugated rabbit anti-chicken IgY at 1/10000 dilution

Developed using the ECL technique.

Performed under reducing conditions.

**Observed band size:** 280,70 kDa

**Exposure time:** 1 minute

**Please note:** All products are "FOR RESEARCH USE ONLY. NOT FOR USE IN DIAGNOSTIC PROCEDURES"

### **Our Abpromise to you: Quality guaranteed and expert technical support**

---

- Replacement or refund for products not performing as stated on the datasheet
- Valid for 12 months from date of delivery
- Response to your inquiry within 24 hours
- We provide support in Chinese, English, French, German, Japanese and Spanish
- Extensive multi-media technical resources to help you
- We investigate all quality concerns to ensure our products perform to the highest standards

If the product does not perform as described on this datasheet, we will offer a refund or replacement. For full details of the Abpromise, please visit <https://www.abcam.cn/abpromise> or contact our technical team.

### **Terms and conditions**

---

- Guarantee only valid for products bought direct from Abcam or one of our authorized distributors