


Anti-MAP1LC3A antibody [EP1528Y] ab52628

重组 RabMAb

★★★★★ **8 Abreviews** **14 References** **4 图像**

概述

产品名称	Anti-MAP1LC3A抗体[EP1528Y]
描述	兔单克隆抗体[EP1528Y] to MAP1LC3A
宿主	Rabbit
经测试应用	适用于: ICC/IF, WB, IHC-P 不适用于: Flow Cyt
种属反应性	与反应: Human 预测可用于: Mouse, Rat 
免疫原	Synthetic peptide within Human MAP1LC3A aa 1-100 (N terminal). The exact sequence is proprietary. Database link: Q9H492
阳性对照	WB: Fetal brain cell lysate. IHC-P: Human hippocampus. ICC/IF: SH-SY5Y cells.
常规说明	This product is a recombinant monoclonal antibody, which offers several advantages including: <ul style="list-style-type: none"> - High batch-to-batch consistency and reproducibility - Improved sensitivity and specificity - Long-term security of supply - Animal-free production For more information see here . Our RabMAb [®] technology is a patented hybridoma-based technology for making rabbit monoclonal antibodies. For details on our patents, please refer to RabMAb[®] patents .

性能

形式	Liquid
存放说明	Shipped at 4°C. Store at -20°C. Stable for 12 months at -20°C.
存储溶液	pH: 7.20 Preservative: 0.01% Sodium azide Constituents: 9% PBS, 40% Glycerol (glycerin, glycerine), 0.05% BSA, 50% Tissue culture supernatant
纯度	Protein A purified
克隆	单克隆

克隆编号 EP1528Y

同种型 IgG

应用

The Abpromise guarantee **Abpromise™**承诺保证使用ab52628于以下的经测试应用

“应用说明”部分 下显示的仅为推荐的起始稀释度;实际最佳的稀释度/浓度应由使用者检定。

应用	Ab评论	说明
ICC/IF		1/100.
WB	★★★★★ (8)	1/50000. Detects a band of approximately 16 kDa (predicted molecular weight: 14 kDa).
IHC-P		Use at an assay dependent concentration. Perform heat mediated antigen retrieval with citrate buffer pH 6 before commencing with IHC staining protocol.

应用说明 Is unsuitable for Flow Cyt.

靶标

功能 Probably involved in formation of autophagosomal vacuoles (autophagosomes).

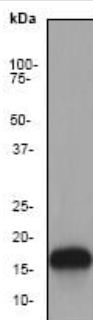
组织特异性 Most abundant in heart, brain, liver, skeletal muscle and testis but absent in thymus and peripheral blood leukocytes.

序列相似性 Belongs to the MAP1 LC3 family.

翻译后修饰 The precursor molecule is cleaved by APG4B/ATG4B to form the cytosolic form, LC3-I. This is activated by APG7L/ATG7, transferred to ATG3 and conjugated to phospholipid to form the membrane-bound form, LC3-II.

细胞定位 Cytoplasm > cytoskeleton. Endomembrane system. Cytoplasmic vesicle > autophagosome membrane. LC3-II binds to the autophagic membranes.

图片



Western blot - Anti-MAP1LC3A antibody [EP1528Y] (ab52628)

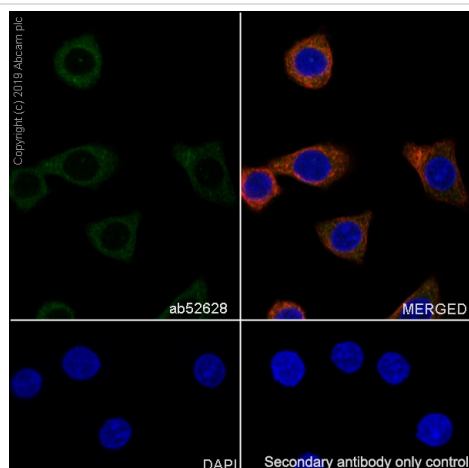
Anti-MAP1LC3A antibody [EP1528Y] (ab52628) at 1/50000 dilution + Fetal brain lysate at 10 µg

Secondary

goat anti-rabbit HRP labelled at 1/2000 dilution

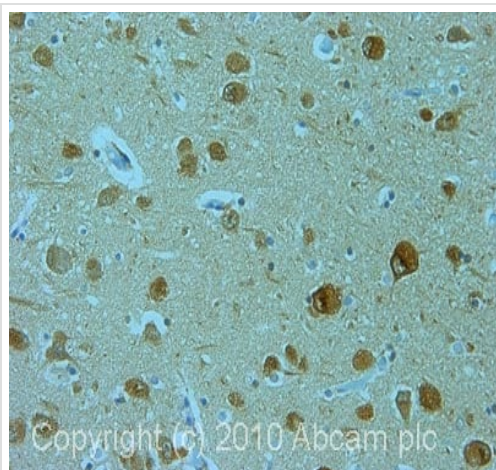
Predicted band size: 14 kDa

Observed band size: 16 kDa



Immunocytochemistry/ Immunofluorescence - Anti-MAP1LC3A antibody [EP1528Y] (ab52628)

Immunocytochemistry/ Immunofluorescence analysis of SH-SY5Y (human neuroblastoma epithelial cell) cells labeling MAP1LC3A with purified ab52628 at 1/100 dilution (10 µg/mL). Cells were fixed in 100% Methanol. Cells were counterstained with **ab195889** Anti-alpha Tubulin antibody [DM1A] - Microtubule Marker (Alexa Fluor® 594) 1/200 (2.5 µg/mL). Goat anti rabbit IgG (Alexa Fluor® 488, **ab150077**) was used as the secondary antibody at 1/1000 (2 µg/mL) dilution. DAPI (blue) was used as nuclear counterstain. **ab195889** Anti-alpha Tubulin antibody [DM1A] - Microtubule Marker (Alexa Fluor® 594) 1/200 (2.5 µg/mL) was used as the secondary antibody only control.



Immunohistochemistry (Formalin/PFA-fixed paraffin-embedded sections) - Anti-MAP1LC3A antibody [EP1528Y] (ab52628)

IHC image of ab52628 staining in human hippocampus formalin fixed paraffin embedded tissue section, performed on a Leica Bond™ system using the standard protocol F. The section was pre-treated using heat mediated antigen retrieval with sodium citrate buffer (pH6, epitope retrieval solution 1) for 20 mins. The section was then incubated with ab52628, 1 µg/ml, for 15 mins at room temperature and detected using an HRP conjugated compact polymer system. DAB was used as the chromogen. The section was then counterstained with haematoxylin and mounted with DPX.

For other IHC staining systems (automated and non-automated) customers should optimize variable parameters such as antigen retrieval conditions, primary antibody concentration and antibody incubation times.

Why choose a recombinant antibody?



Research with confidence
Consistent and reproducible results



Long-term and scalable supply
Recombinant technology



Success from the first experiment
Confirmed specificity



Ethical standards compliant
Animal-free production

Anti-MAP1LC3A antibody [EP1528Y] (ab52628)

Please note: All products are "FOR RESEARCH USE ONLY. NOT FOR USE IN DIAGNOSTIC PROCEDURES"

Our Abpromise to you: Quality guaranteed and expert technical support

- Replacement or refund for products not performing as stated on the datasheet
- Valid for 12 months from date of delivery
- Response to your inquiry within 24 hours
- We provide support in Chinese, English, French, German, Japanese and Spanish
- Extensive multi-media technical resources to help you
- We investigate all quality concerns to ensure our products perform to the highest standards

If the product does not perform as described on this datasheet, we will offer a refund or replacement. For full details of the Abpromise, please visit <https://www.abcam.cn/abpromise> or contact our technical team.

Terms and conditions

- Guarantee only valid for products bought direct from Abcam or one of our authorized distributors