


# Anti-Mad2L2/REV7 antibody [EPR13657] - BSA and Azide free ab232620

 **RabMAb**

## 5 图像

### 概述

产品名称	Anti-Mad2L2/REV7抗体[EPR13657] - BSA and Azide free
描述	兔单克隆抗体[EPR13657] to Mad2L2/REV7 - BSA and Azide free
宿主	Rabbit
经测试应用	<b>适用于:</b> Flow Cyt (Intra), WB, IHC-P, ICC/IF, IP
种属反应性	<b>与反应:</b> Human <b>预测可用于:</b> Mouse, Rat 
免疫原	Synthetic peptide. This information is proprietary to Abcam and/or its suppliers.
阳性对照	IHC-P: Human ovarian carcinoma tissue.
常规说明	<p>ab232620 is the carrier-free version of <a href="#">ab180579</a>.</p> <p>Our <b>carrier-free</b> antibodies are typically supplied in a PBS-only formulation, purified and free of BSA, sodium azide and glycerol. The carrier-free buffer and high concentration allow for increased conjugation efficiency.</p> <p>This conjugation-ready format is designed for use with fluorochromes, metal isotopes, oligonucleotides, and enzymes, which makes them ideal for antibody labelling, functional and cell-based assays, flow-based assays (e.g. mass cytometry) and Multiplex Imaging applications.</p> <p>Use our <b>conjugation kits</b> for antibody conjugates that are ready-to-use in as little as 20 minutes with &lt;1 minute hands-on-time and 100% antibody recovery: available for fluorescent dyes, HRP, biotin and gold.</p> <p>This product is compatible with the Maxpar<sup>®</sup> Antibody Labeling Kit from Fluidigm, without the need for antibody preparation. Maxpar<sup>®</sup> is a trademark of Fluidigm Canada Inc.</p> <p>This product is a recombinant monoclonal antibody, which offers several advantages including:</p> <ul style="list-style-type: none"> <li>- High batch-to-batch consistency and reproducibility</li> <li>- Improved sensitivity and specificity</li> <li>- Long-term security of supply</li> <li>- Animal-free production</li> </ul> <p>For more information <a href="#">see here</a>.</p> <p>Our RabMAb<sup>®</sup> technology is a patented hybridoma-based technology for making rabbit monoclonal antibodies. For details on our patents, please refer to <a href="#">RabMAb<sup>®</sup> patents</a>.</p>

## 性能

形式	Liquid
存放说明	Shipped at 4°C. Store at +4°C. Do Not Freeze.
存储溶液	pH: 7.2 Constituent: PBS
无载体	是
纯度	Protein A purified
克隆	单克隆
克隆编号	EPR13657
同种型	IgG

## 应用

**The Abpromise guarantee**      **Abpromise™** 承诺保证使用ab232620于以下的经测试应用

“应用说明”部分 下显示的仅为推荐的起始稀释度;实际最佳的稀释度/浓度应由使用者检定。

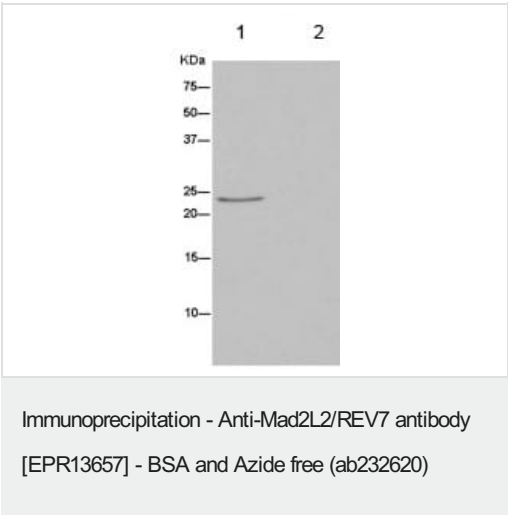
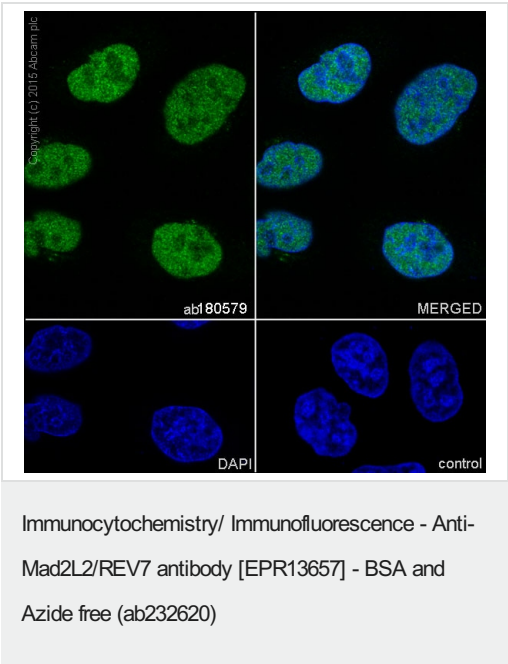
应用	Ab评论	说明
Flow Cyt (Intra)		Use at an assay dependent concentration.
WB		Use at an assay dependent concentration. Predicted molecular weight: 24 kDa.
IHC-P		Use at an assay dependent concentration. Perform heat mediated antigen retrieval with Tris/EDTA buffer pH 9.0 before commencing with IHC staining protocol.
ICC/IF		Use at an assay dependent concentration.
IP		Use at an assay dependent concentration.

## 靶标

功能	Adapter protein able to interact with different proteins and involved in different biological processes. Mediates the interaction between the error-prone DNA polymerase zeta catalytic subunit REV3L and the inserter polymerase REV1, thereby mediating the second polymerase switching in translesion DNA synthesis. Translesion DNA synthesis releases the replication blockade of replicative polymerases, stalled in presence of DNA lesions. May also regulate another aspect of cellular response to DNA damage through regulation of the JNK-mediated phosphorylation and activation of the transcriptional activator ELK1. Inhibits the FZR1- and probably CDC20-mediated activation of the anaphase promoting complex APC thereby regulating progression through the cell cycle. Regulates TCF7L2-mediated gene transcription and may play a role in epithelial-mesenchymal transdifferentiation.
组织特异性	Ubiquitously expressed.

序列相似性	Contains 1 HORMA domain.
细胞定位	Nucleus. Cytoplasm > cytoskeleton > spindle. Cytoplasm.

图片



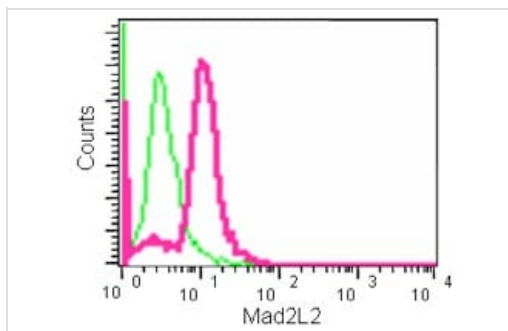
Immunocytochemistry/Immunofluorescence analysis of HeLa cells labelling Mad2L2/REV7 with **ab129199** at 1/500. Cells were fixed with 4% Paraformaldehyde. **ab150077**, an Alexa Fluor® 488-conjugated goat anti-rabbit IgG (1/1000) was used as the secondary antibody.

**Control:** PBS only.  
**Nuclear counter stain:** DAPI.

This data was developed using the same antibody clone in a different buffer formulation containing PBS, BSA, glycerol, and sodium azide (**ab180579**).

Immunoprecipitation of Hela cells labeling Mad2L2/REV7 using **ab180579** at 1/40 dilution (lane 1) or negative control (lane 2) followed by anti-Rabbit IgG (HRP), specific to the non-reduced form of IgG at 1/1500.

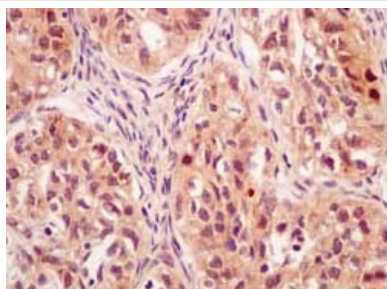
This data was developed using the same antibody clone in a different buffer formulation containing PBS, BSA, glycerol, and sodium azide (**ab180579**).



Flow Cytometry (Intracellular) - Anti-Mad2L2/REV7 antibody [EPR13657] - BSA and Azide free (ab232620)

Intracellular flow cytometric analysis of paraformaldehyde fixed K562 cells labeling Mad2L2/REV7 with **ab180579** at 1/70 dilution and Goat anti rabbit IgG (FITC) at 1/50.

This data was developed using the same antibody clone in a different buffer formulation containing PBS, BSA, glycerol, and sodium azide (**ab180579**).



Immunohistochemistry (Formalin/PFA-fixed paraffin-embedded sections) - Anti-Mad2L2/REV7 antibody [EPR13657] - BSA and Azide free (ab232620)

Immunohistochemical staining of paraffin-embedded human ovarian carcinoma tissue labeling Mad2L2/REV7 using **ab180579** at a 1/50 dilution and ImmunoHistoprobe HRP Polymer for Rabbit IgG. Counterstained with hematoxylin.

This data was developed using the same antibody clone in a different buffer formulation containing PBS, BSA, glycerol, and sodium azide (**ab180579**).

Perform heat mediated antigen retrieval with EDTA buffer pH 9 before commencing with IHC staining protocol.

### Why choose a recombinant antibody?



**Research with confidence**  
Consistent and reproducible results



**Long-term and scalable supply**  
Recombinant technology



**Success from the first experiment**  
Confirmed specificity



**Ethical standards compliant**  
Animal-free production

Anti-Mad2L2/REV7 antibody [EPR13657] - BSA and Azide free (ab232620)

**Please note:** All products are "FOR RESEARCH USE ONLY. NOT FOR USE IN DIAGNOSTIC PROCEDURES"

**Our Abpromise to you: Quality guaranteed and expert technical support**

- Replacement or refund for products not performing as stated on the datasheet
- Valid for 12 months from date of delivery
- Response to your inquiry within 24 hours
- We provide support in Chinese, English, French, German, Japanese and Spanish
- Extensive multi-media technical resources to help you
- We investigate all quality concerns to ensure our products perform to the highest standards

If the product does not perform as described on this datasheet, we will offer a refund or replacement. For full details of the Abpromise, please visit <https://www.abcam.cn/abpromise> or contact our technical team.

#### **Terms and conditions**

---

- Guarantee only valid for products bought direct from Abcam or one of our authorized distributors