


Anti-Mad2L1 antibody ab97777

★★★★★ [1 Abreviews](#) [9 References](#) [3 图像](#)

概述

产品名称	Anti-Mad2L1抗体
描述	兔多克隆抗体to Mad2L1
宿主	Rabbit
经测试应用	适用于: WB, IHC-P, ICC/IF
种属反应性	与反应: Human 预测可用于: Rat 
免疫原	Synthetic peptide corresponding to a region within amino acids 192 and 205 of Human Mad2L1 (NP_002349).
阳性对照	NCIN87, U2OS, HepG2, MOLT4 and Raji cell lines; DLD-1 xenograft
常规说明	<p>The Life Science industry has been in the grips of a reproducibility crisis for a number of years. Abcam is leading the way in addressing this with our range of recombinant monoclonal antibodies and knockout edited cell lines for gold-standard validation. Please check that this product meets your needs before purchasing.</p> <p>If you have any questions, special requirements or concerns, please send us an inquiry and/or contact our Support team ahead of purchase. Recommended alternatives for this product can be found below, along with publications, customer reviews and Q&As</p>

性能

形式	Liquid
存放说明	Shipped at 4°C. Upon delivery aliquot and store at -20°C or -80°C. Avoid repeated freeze / thaw cycles.
存储溶液	pH: 7.00 Preservative: 0.01% Thimerosal (merthiolate) Constituents: 59.99% PBS, 40% Glycerol (glycerin, glycerine)
纯度	Immunogen affinity purified
克隆	多克隆
同种型	IgG

应用

The Abpromise guarantee

Abpromise™承诺保证使用ab97777于以下的经测试应用

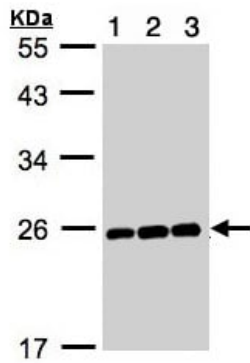
“应用说明”部分下显示的仅为推荐的起始稀释度;实际最佳的稀释度/浓度应由使用者检定。

应用	Ab评论	说明
WB		1/500 - 1/1000. Predicted molecular weight: 24 kDa.
IHC-P	★★★★★ (1)	1/100 - 1/500.
ICC/IF		1/100 - 1/200.

靶标

功能	Component of the spindle-assembly checkpoint that prevents the onset of anaphase until all chromosomes are properly aligned at the metaphase plate. Required for the execution of the mitotic checkpoint which monitors the process of kinetochore-spindle attachment and inhibits the activity of the anaphase promoting complex by sequestering CDC20 until all chromosomes are aligned at the metaphase plate.
序列相似性	Belongs to the MAD2 family. Contains 1 HORMA domain.
结构域	The protein has two highly different native conformations, an inactive open conformation that cannot bind CDC20 and that predominates in cytosolic monomers, and an active closed conformation. The protein in the closed conformation preferentially dimerizes with another molecule in the open conformation, but can also form a dimer with a molecule in the closed conformation. Formation of a heterotetrameric core complex containing two molecules of MAD1L1 and of MAD2L1 in the closed conformation promotes binding of another molecule of MAD2L1 in the open conformation and the conversion of the open to the closed form, and thereby promotes interaction with CDC20.
翻译后修饰	Phosphorylated on multiple serine residues. The level of phosphorylation varies during the cell cycle and is highest during mitosis. Phosphorylation abolishes interaction with MAD1L1 and reduces interaction with CDC20.
细胞定位	Nucleus. Chromosome > centromere > kinetochore. Cytoplasm. Recruited by MAD1L1 to unattached kinetochores (Probable). Recruited to the nuclear pore complex by TPR during interphase. Recruited to kinetochores in late prometaphase after BUB1, CENPF, BUB1B and CENPE. Kinetochore association requires the presence of NEK2. Kinetochore association is repressed by UBD.

图片



Western blot - Anti-Mad2L1 antibody (ab97777)

All lanes : Anti-Mad2L1 antibody (ab97777) at 1/1000 dilution

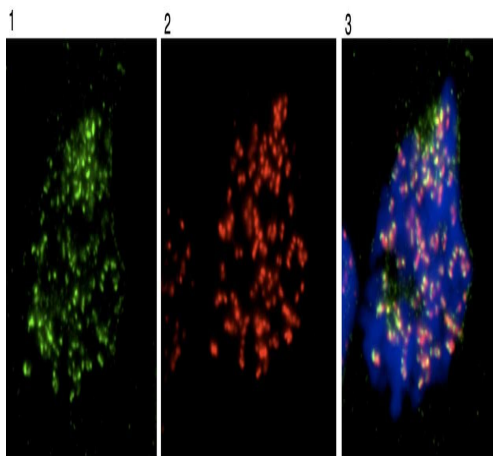
Lane 1 : HepG2 whole cell lysate

Lane 2 : MOLT4 whole cell lysate

Lane 3 : Raji whole cell lysate

Lysates/proteins at 30 µg per lane.

Predicted band size: 24 kDa



Immunocytochemistry/ Immunofluorescence - Anti-Mad2L1 antibody (ab97777)

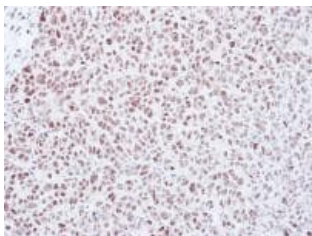
Immunofluorescence analysis of Mad2L1 in Human osteosarcoma cell line U2OS, using ab97777 at 1/1000 dilution.

1: Mad2L1

2: ACA

3: merged with DAPI

Cells were fixed with 4% PFA/PBS for 15min, RT and blocked with 2.5% BSA/PBS.



Immunohistochemistry (Formalin/PFA-fixed paraffin-embedded sections) - Anti-Mad2L1 antibody (ab97777)

Immunohistochemical analysis of Mad2L1 in paraffin embedded DLD-1 xenograft, using ab97777 at a 1/500 dilution.

Please note: All products are "FOR RESEARCH USE ONLY. NOT FOR USE IN DIAGNOSTIC PROCEDURES"

Our Abpromise to you: Quality guaranteed and expert technical support

- Replacement or refund for products not performing as stated on the datasheet
- Valid for 12 months from date of delivery
- Response to your inquiry within 24 hours

- We provide support in Chinese, English, French, German, Japanese and Spanish
- Extensive multi-media technical resources to help you
- We investigate all quality concerns to ensure our products perform to the highest standards

If the product does not perform as described on this datasheet, we will offer a refund or replacement. For full details of the Abpromise, please visit <https://www.abcam.cn/abpromise> or contact our technical team.

Terms and conditions

- Guarantee only valid for products bought direct from Abcam or one of our authorized distributors