


Anti-LZTS1/FEZ1 antibody ab226335

1 [References](#) **2** [图像](#)

概述

产品名称	Anti-LZTS1/FEZ1抗体
描述	兔多克隆抗体to LZTS1/FEZ1
宿主	Rabbit
经测试应用	适用于: WB, IP
种属反应性	与反应: Human 预测可用于: Mouse, Rat, Sheep, Cow, Cat, Dog, Pig, Cynomolgus monkey, Rhesus monkey, Gorilla, Giant Panda 
免疫原	Synthetic peptide within Human LZTS1/FEZ1 aa 500-550. The exact sequence is proprietary. Database link: Q9Y250
阳性对照	WB: HEK-293T and Jurkat whole cell lysates. IP: Jurkat whole cell lysate.
常规说明	<p>The Life Science industry has been in the grips of a reproducibility crisis for a number of years. Abcam is leading the way in addressing this with our range of recombinant monoclonal antibodies and knockout edited cell lines for gold-standard validation. Please check that this product meets your needs before purchasing.</p> <p>If you have any questions, special requirements or concerns, please send us an inquiry and/or contact our Support team ahead of purchase. Recommended alternatives for this product can be found below, along with publications, customer reviews and Q&As</p>

性能

形式	Liquid
存放说明	Shipped at 4°C. Store at +4°C short term (1-2 weeks). Upon delivery aliquot. Store at -20°C long term. Avoid freeze / thaw cycle.
存储溶液	pH: 7 Preservative: 0.09% Sodium azide Constituent: Tris citrate/phosphate
纯度	pH 7 to 8 Immunogen affinity purified
纯化说明	ab226335 was affinity purified using an epitope specific to LZTS1/FEZ1 immobilized on solid support.

克隆

多克隆

同种型

IgG

应用

The Abpromise guarantee

Abpromise™承诺保证使用ab226335于以下的经测试应用

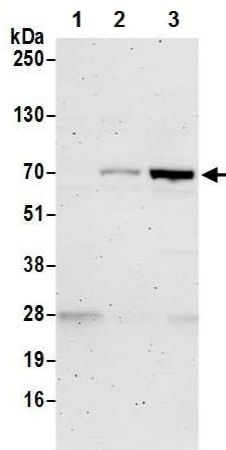
“应用说明”部分 下显示的仅为推荐的起始稀释度;实际最佳的稀释度/浓度应由使用者检定。

应用	Ab评论	说明
WB		1/2000 - 1/10000. Predicted molecular weight: 67 kDa.
IP		Use at 2-10 µg/mg of lysate.

靶标

功能	Involved in the regulation of cell growth. May stabilize the active CDC2-cyclin B1 complex and thereby contribute to the regulation of the cell cycle and the prevention of uncontrolled cell proliferation. May act as a tumor suppressor.
组织特异性	Highly expressed in testis, prostate, spleen, thymus, ovary and brain. Detected at lower levels in heart, placenta, small intestine, colon, liver, kidney, skeletal muscle and pancreas. Not detectable in primary tumors from breast and prostate and in many cancer cell lines.
序列相似性	Belongs to the LZTS family.
翻译后修饰	Phosphorylated on serine residues. Hyperphosphorylated by the cAMP-dependent kinase PKA during cell-cycle progression.
细胞定位	Cytoplasm. Cell membrane. Cell projection > dendritic spine. Cell junction > synapse > postsynaptic cell membrane > postsynaptic density. Cell junction > synapse. Associated with the plasma membrane and with microtubules. Detected in dendritic spines, especially in the postsynaptic density.

图片



Western blot - Anti-LZTS1/FEZ1 antibody
(ab226335)

All lanes : Anti-LZTS1/FEZ1 antibody (ab226335) at 0.1 µg/ml

Lane 1 : HeLa (human epithelial cell line from cervix adenocarcinoma) whole cell lysate

Lane 2 : HEK-293T (human epithelial cell line from embryonic kidney transformed with large T antigen) whole cell lysate

Lane 3 : Jurkat (human T cell leukemia cell line from peripheral blood) whole cell lysate

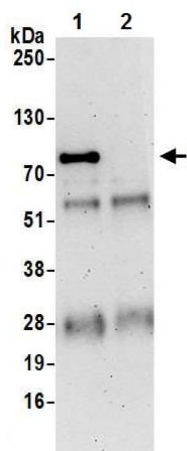
Lysates/proteins at 50 µg per lane.

Developed using the ECL technique.

Predicted band size: 67 kDa

Exposure time: 3 minutes

Cell lysates were prepared using NETN lysis buffer.



Immunoprecipitation - Anti-LZTS1/FEZ1 antibody
(ab226335)

LZTS1/FEZ1 was immunoprecipitated from Jurkat (human T cell leukemia cell line from peripheral blood) whole cell lysate (prepared using NETN lysis buffer; 20% of IP loaded) with ab226335 at 6 µg per reaction. Western blot was performed from the immunoprecipitate using ab226335 at 0.4 µg/ml.

Lane 1: ab226335 IP in Jurkat whole cell lysate.

Lane 2: Control IgG IP in Jurkat whole cell lysate.

Detection: Chemiluminescence with exposure time of 3 minutes.

Please note: All products are "FOR RESEARCH USE ONLY. NOT FOR USE IN DIAGNOSTIC PROCEDURES"

Our Abpromise to you: Quality guaranteed and expert technical support

- Replacement or refund for products not performing as stated on the datasheet
- Valid for 12 months from date of delivery
- Response to your inquiry within 24 hours

- We provide support in Chinese, English, French, German, Japanese and Spanish
- Extensive multi-media technical resources to help you
- We investigate all quality concerns to ensure our products perform to the highest standards

If the product does not perform as described on this datasheet, we will offer a refund or replacement. For full details of the Abpromise, please visit <https://www.abcam.cn/abpromise> or contact our technical team.

Terms and conditions

- Guarantee only valid for products bought direct from Abcam or one of our authorized distributors