


Anti-LZTS1/FEZ1 antibody ab127035

2 图像

概述	
产品名称	Anti-LZTS1/FEZ1抗体
描述	兔多克隆抗体to LZTS1/FEZ1
宿主	Rabbit
经测试应用	适用于: WB, IHC-P
种属反应性	与反应: Human 预测可用于: Mouse, Rat, Cow 
免疫原	Recombinant fragment corresponding to Human LZTS1/FEZ1 aa 315-585. Database link: Q9Y250
阳性对照	U87-MG cell lysate; breast cancer tissue
常规说明	<p>The Life Science industry has been in the grips of a reproducibility crisis for a number of years. Abcam is leading the way in addressing this with our range of recombinant monoclonal antibodies and knockout edited cell lines for gold-standard validation. Please check that this product meets your needs before purchasing.</p> <p>If you have any questions, special requirements or concerns, please send us an inquiry and/or contact our Support team ahead of purchase. Recommended alternatives for this product can be found below, along with publications, customer reviews and Q&As</p>
性能	
形式	Liquid
存放说明	Shipped at 4°C. Upon delivery aliquot and store at -20°C or -80°C. Avoid repeated freeze / thaw cycles.
存储溶液	pH: 7.00 Preservative: 0.01% Thimerosal (merthiolate) Constituents: 1.21% Tris, 0.75% Glycine, 20% Glycerol (glycerin, glycerine)
纯度	Immunogen affinity purified
克隆	多克隆
同种型	IgG
应用	

The Abpromise guarantee

Abpromise™承诺保证使用ab127035于以下的经测试应用

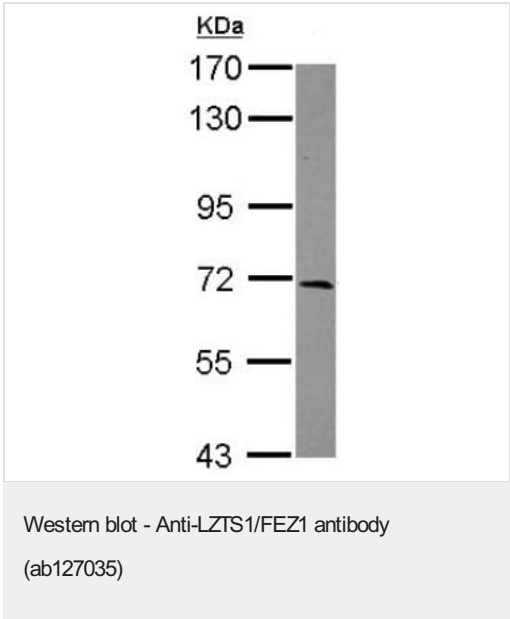
“应用说明”部分 下显示的仅为推荐的起始稀释度;实际最佳的稀释度/浓度应由使用者检定。

应用	Ab评论	说明
WB		1/500 - 1/3000. Predicted molecular weight: 67 kDa.
IHC-P		1/100 - 1/500. Perform heat mediated antigen retrieval with citrate buffer pH 6 before commencing with IHC staining protocol.

靶标

功能	Involved in the regulation of cell growth. May stabilize the active CDC2-cyclin B1 complex and thereby contribute to the regulation of the cell cycle and the prevention of uncontrolled cell proliferation. May act as a tumor suppressor.
组织特异性	Highly expressed in testis, prostate, spleen, thymus, ovary and brain. Detected at lower levels in heart, placenta, small intestine, colon, liver, kidney, skeletal muscle and pancreas. Not detectable in primary tumors from breast and prostate and in many cancer cell lines.
序列相似性	Belongs to the LZTS family.
翻译后修饰	Phosphorylated on serine residues. Hyperphosphorylated by the cAMP-dependent kinase PKA during cell-cycle progression.
细胞定位	Cytoplasm. Cell membrane. Cell projection > dendritic spine. Cell junction > synapse > postsynaptic cell membrane > postsynaptic density. Cell junction > synapse. Associated with the plasma membrane and with microtubules. Detected in dendritic spines, especially in the postsynaptic density.

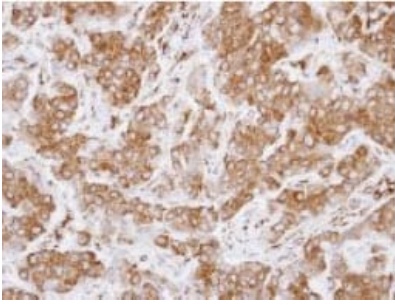
图片



Anti-LZTS1/FEZ1 antibody (ab127035) at 1/1000 dilution + U87-MG whole cell lysate at 30 µg

Predicted band size: 67 kDa

7.5% SDS PAGE



Immunohistochemistry (Formalin/PFA-fixed paraffin-embedded sections) - Anti-LZTS1/FEZ1 antibody (ab127035)

ab127035, at 1/250 dilution, staining LZTS1/FEZ1 in paraffin embedded Human breast cancer tissue.

Please note: All products are "FOR RESEARCH USE ONLY. NOT FOR USE IN DIAGNOSTIC PROCEDURES"

Our Abpromise to you: Quality guaranteed and expert technical support

- Replacement or refund for products not performing as stated on the datasheet
- Valid for 12 months from date of delivery
- Response to your inquiry within 24 hours
- We provide support in Chinese, English, French, German, Japanese and Spanish
- Extensive multi-media technical resources to help you
- We investigate all quality concerns to ensure our products perform to the highest standards

If the product does not perform as described on this datasheet, we will offer a refund or replacement. For full details of the Abpromise, please visit <https://www.abcam.cn/abpromise> or contact our technical team.

Terms and conditions

- Guarantee only valid for products bought direct from Abcam or one of our authorized distributors