


Anti-Lysozyme antibody [SP329] ab223503

敲除验证
重组
RabMAb

12 图像

概述

产品名称	Anti-Lysozyme抗体[SP329]
描述	兔单克隆抗体[SP329] to Lysozyme
宿主	Rabbit
经测试应用	适用于: WB, IHC-P, Flow Cyt (Intra)
种属反应性	与反应: Human 预测可用于: Rabbit 
免疫原	Recombinant full length protein corresponding to Human Lysozyme. Database link: P61626
阳性对照	IHC-P: Human tonsil, thymus, liver, spleen, lung, pancreatic carcinoma, and stomach carcinoma tissue; WB: THP-1, HepG2 and HL-60 cell lysate; Flow Cyt: HL-60 cells.
常规说明	<p>This product is FOR RESEARCH USE ONLY. For commercial use, please contact partnerships@abcam.com.</p> <p>The Life Science industry has been in the grips of a reproducibility crisis for a number of years. Abcam is leading the way in addressing this with our range of recombinant monoclonal antibodies and knockout edited cell lines for gold-standard validation. Please check that this product meets your needs before purchasing.</p> <p>If you have any questions, special requirements or concerns, please send us an inquiry and/or contact our Support team ahead of purchase. Recommended alternatives for this product can be found below, along with publications, customer reviews and Q&As</p>

性能

形式	Liquid
存放说明	Shipped at 4°C. Store at +4°C short term (1-2 weeks). Upon delivery aliquot. Store at -20°C long term. Avoid freeze / thaw cycle.
存储溶液	<p>pH: 7.60</p> <p>Preservative: 0.1% Sodium azide</p> <p>Constituents: PBS, 1% BSA</p>
纯度	Protein A/G purified

克隆	单克隆
克隆编号	SP329
同种型	IgG

应用

The Abpromise guarantee **Abpromise™**承诺保证使用ab223503于以下的经测试应用

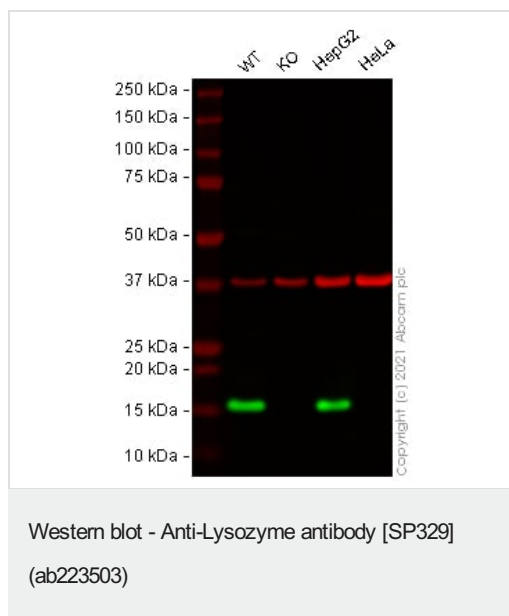
“应用说明”部分 下显示的仅为推荐的起始稀释度;实际最佳的稀释度/浓度应由使用者检定。

应用	Ab评论	说明
WB		1/400. Predicted molecular weight: 16 kDa. Primary antibody incubation for 1 hour at room temperature.
IHC-P		1/100. Perform heat mediated antigen retrieval with Tris/EDTA buffer pH 9.0 before commencing with IHC staining protocol. Perform heat mediated antigen retrieval with EDTA buffer pH 8.0 before commencing with IHC staining protocol. Primary antibody incubation for 30 minutes at room temperature.
Flow Cyt (Intra)		1/400. Primary antibody incubation for 30 minutes at 4°C.

靶标

功能	Lysozymes have primarily a bacteriolytic function; those in tissues and body fluids are associated with the monocyte-macrophage system and enhance the activity of immunoagents.
疾病相关	Amyloidosis 8
序列相似性	Belongs to the glycosyl hydrolase 22 family.
细胞定位	Secreted.

图片



All lanes : Anti-Lysozyme antibody [SP329] (ab223503) at 1/400 dilution

Lane 1 : Wild-type THP1 cell lysate

Lane 2 : LYZ knockout THP1 cell lysate

Lane 3 : HepG2 cell lysate

Lane 4 : HeLa cell lysate

Lysates/proteins at 20 µg per lane.

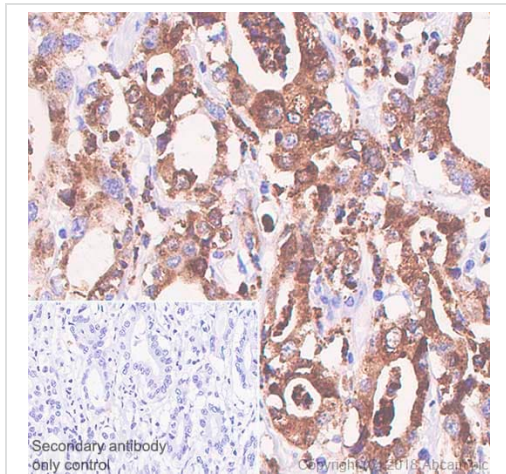
Performed under reducing conditions.

Predicted band size: 16 kDa

Observed band size: 16 kDa

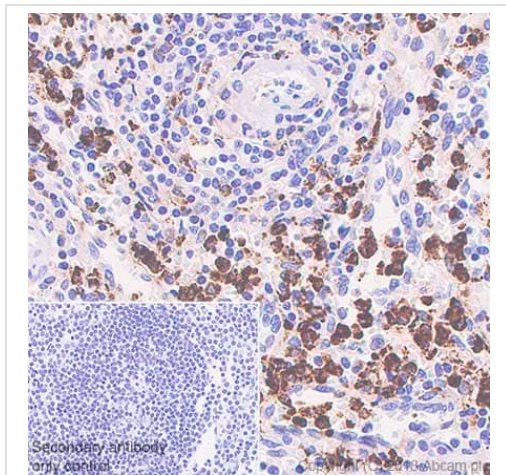
Lanes 1 - 4: Merged signal (red and green). Green - ab223503 observed at 16 kDa. Red - loading control **ab8245** (Mouse anti-GAPDH antibody [6C5]) observed at 37 kDa.

ab223503 was shown to react with Lysozyme in wild-type THP1 cells in Western blot with loss of signal observed in LYZ knockout sample. Wild-type THP1 and LYZ knockout cell lysates were subjected to SDS-PAGE. Membranes were blocked in 3 % milk in TBS-T (0.1 % Tween®) before incubation with ab223503 and **ab8245** (Mouse anti-GAPDH antibody [6C5]) overnight at 4°C at a 1 in 400 dilution and a 1 in 20000 dilution respectively. Blots were incubated with Goat anti-Rabbit IgG H&L (IRDye® 800CW) preabsorbed (**ab216773**) and Goat anti-Mouse IgG H&L (IRDye® 680RD) preabsorbed (**ab216776**) secondary antibodies at 1 in 20000 dilution for 1 h at room temperature before imaging.



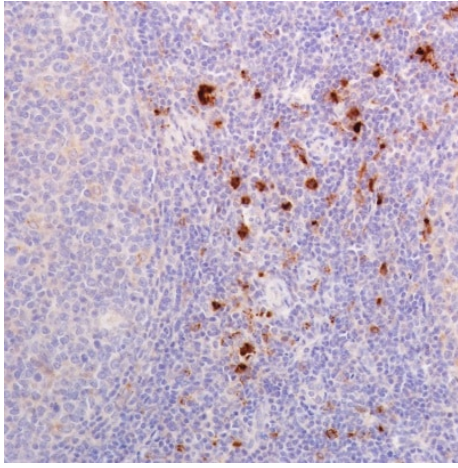
Immunohistochemistry (Formalin/PFA-fixed paraffin-embedded sections) - Anti-Lysozyme antibody [SP329] (ab223503)

Immunohistochemistry (Formalin/PFA-fixed paraffin-embedded sections) analysis of Human stomach carcinoma tissue sections labeling Lysozyme with ab223503 at 1/100 dilution (2.62 µg/ml). Cytoplasmic staining on the human stomach carcinoma and the stromal cells, performed on a Leica Biosystems BOND® RX instrument. The section was incubated with ab223503 for 10 mins at room temperature. Heat mediated antigen retrieval was performed with Tris-EDTA buffer (pH 9.0, epitope retrieval solution 2) for 10mins. Rabbit specific IHC polymer detection kit HRP/DAB (**ab209101**) was used as the secondary antibody. Negative control: PBS instead of the primary antibody. Hematoxylin was used as a counterstain.



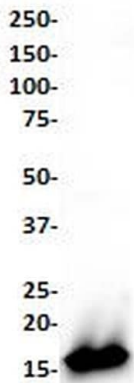
Immunohistochemistry (Formalin/PFA-fixed paraffin-embedded sections) - Anti-Lysozyme antibody [SP329] (ab223503)

Immunohistochemistry (Formalin/PFA-fixed paraffin-embedded sections) analysis of Human spleen tissue sections labeling Lysozyme with ab223503 at 1/100 dilution (2.62 µg/ml). Cytoplasmic staining on the human spleen, performed on a Leica Biosystems BOND® RX instrument. The section was incubated with ab223503 for 10 mins at room temperature. Heat mediated antigen retrieval was performed with Tris-EDTA buffer (pH 9.0, epitope retrieval solution 2) for 10mins. Rabbit specific IHC polymer detection kit HRP/DAB (**ab209101**) was used as the secondary antibody. Negative control: PBS instead of the primary antibody. Hematoxylin was used as a counterstain.



Immunohistochemistry (Formalin/PFA-fixed paraffin-embedded sections) - Anti-Lysozyme antibody [SP329] (ab223503)

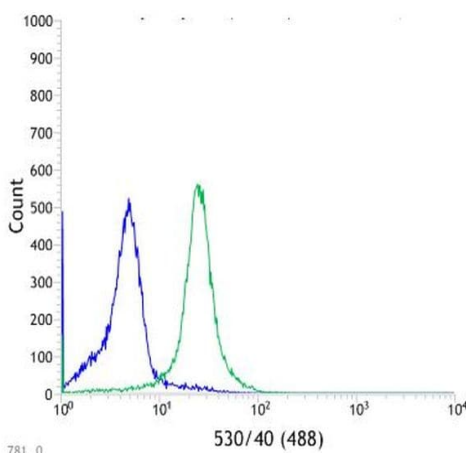
Formalin-fixed, paraffin-embedded human tonsil tissue stained for Lysozyme using ab223503 at 1/100 dilution in immunohistochemical analysis.



Western blot - Anti-Lysozyme antibody [SP329] (ab223503)

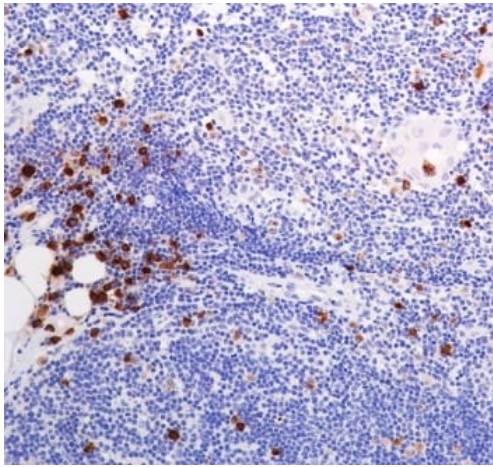
Anti-Lysozyme antibody [SP329] (ab223503) at 1/400 dilution + HL-60 (human promyelocytic leukemia cell line) cell lysate

Predicted band size: 16 kDa



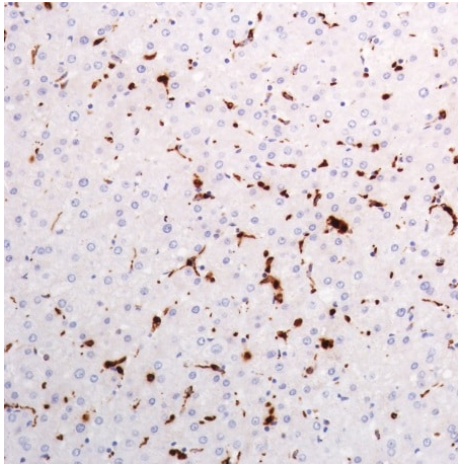
Flow Cytometry (Intracellular) - Anti-Lysozyme antibody [SP329] (ab223503)

Flow cytometric analysis of HL-60 (human promyelocytic leukemia cell line) cell line labeling Lysozyme with ab223503 at 1/100 dilution (green) compared with a negative control of rabbit IgG (blue).



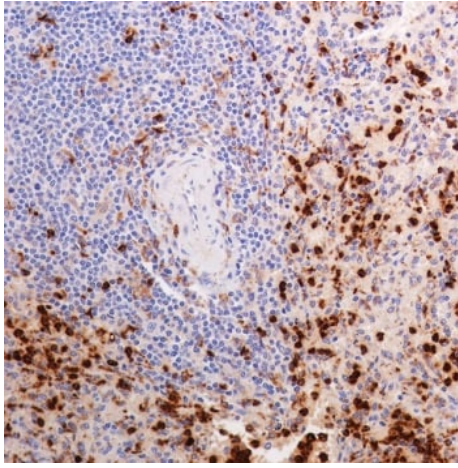
Immunohistochemistry (Formalin/PFA-fixed paraffin-embedded sections) - Anti-Lysozyme antibody [SP329] (ab223503)

Formalin-fixed, paraffin-embedded human thymus tissue stained for Lysozyme using ab223503 at 1/100 dilution in immunohistochemical analysis.



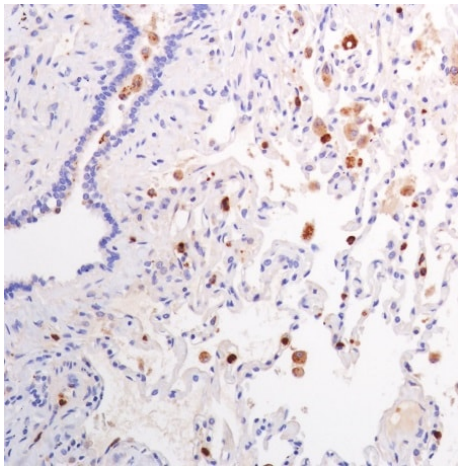
Immunohistochemistry (Formalin/PFA-fixed paraffin-embedded sections) - Anti-Lysozyme antibody [SP329] (ab223503)

Formalin-fixed, paraffin-embedded human liver tissue stained for Lysozyme using ab223503 at 1/100 dilution in immunohistochemical analysis.



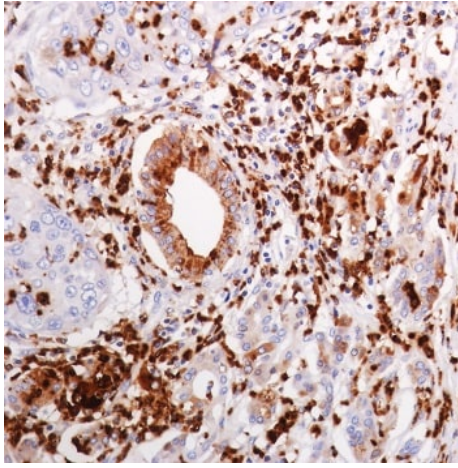
Immunohistochemistry (Formalin/PFA-fixed paraffin-embedded sections) - Anti-Lysozyme antibody [SP329] (ab223503)

Formalin-fixed, paraffin-embedded human spleen tissue stained for Lysozyme using ab223503 at 1/100 dilution in immunohistochemical analysis.



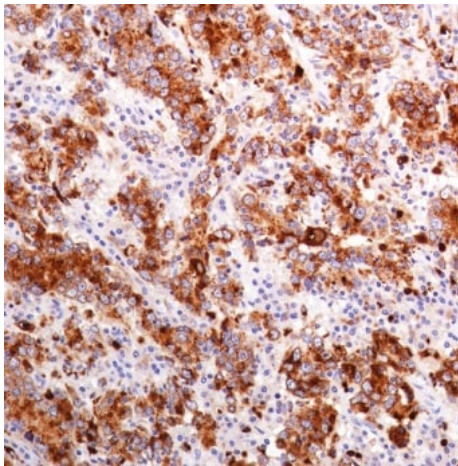
Immunohistochemistry (Formalin/PFA-fixed paraffin-embedded sections) - Anti-Lysozyme antibody [SP329] (ab223503)

Formalin-fixed, paraffin-embedded human lung tissue stained for Lysozyme using ab223503 at 1/100 dilution in immunohistochemical analysis.



Formalin-fixed, paraffin-embedded human pancreatic adenocarcinoma tissue stained for Lysozyme using ab223503 at 1/100 dilution in immunohistochemical analysis.

Immunohistochemistry (Formalin/PFA-fixed paraffin-embedded sections) - Anti-Lysozyme antibody [SP329] (ab223503)



Formalin-fixed, paraffin-embedded human stomach adenocarcinoma tissue stained for Lysozyme using ab223503 at 1/100 dilution in immunohistochemical analysis.

Immunohistochemistry (Formalin/PFA-fixed paraffin-embedded sections) - Anti-Lysozyme antibody [SP329] (ab223503)

Please note: All products are "FOR RESEARCH USE ONLY. NOT FOR USE IN DIAGNOSTIC PROCEDURES"

Our Abpromise to you: Quality guaranteed and expert technical support

- Replacement or refund for products not performing as stated on the datasheet
- Valid for 12 months from date of delivery
- Response to your inquiry within 24 hours
- We provide support in Chinese, English, French, German, Japanese and Spanish
- Extensive multi-media technical resources to help you
- We investigate all quality concerns to ensure our products perform to the highest standards

If the product does not perform as described on this datasheet, we will offer a refund or replacement. For full details of the Abpromise,

please visit <https://www.abcam.cn/abpromise> or contact our technical team.

Terms and conditions

- Guarantee only valid for products bought direct from Abcam or one of our authorized distributors