




Anti-LXR alpha antibody ab3585

★★★★★ [3 Abreviews](#) [19 References](#) [2 图像](#)

概述

产品名称	Anti-LXR alpha抗体
描述	兔多克隆抗体to LXR alpha
宿主	Rabbit
特异性	Detects recombinant Human LXR alpha. This antibody does not detect recombinant Human LXR beta.
经测试应用	适用于: ICC, IHC-FoFr, ICC/IF 不适用于: WB
种属反应性	与反应: Mouse, Rat, Human, Chinese hamster 预测可用于: Cow 
免疫原	Synthetic peptide corresponding to Human LXR alpha aa 318-329. Sequence: DFSYNREDFAKA (Peptide available as ab5021) <div>  Run BLAST with  Run BLAST with </div>
阳性对照	ICC: MCF7, HeLa cells.
常规说明	<p>The Life Science industry has been in the grips of a reproducibility crisis for a number of years. Abcam is leading the way in addressing this with our range of recombinant monoclonal antibodies and knockout edited cell lines for gold-standard validation. Please check that this product meets your needs before purchasing.</p> <p>If you have any questions, special requirements or concerns, please send us an inquiry and/or contact our Support team ahead of purchase. Recommended alternatives for this product can be found below, along with publications, customer reviews and Q&As</p>

性能

形式	Liquid
存放说明	Shipped at 4°C. Store at +4°C short term (1-2 weeks). Upon delivery aliquot. Store at -20°C or -80°C. Avoid freeze / thaw cycle.
存储溶液	Preservative: 0.05% Sodium azide Constituents: 99% PBS, 0.1% BSA

纯度	Immunogen affinity purified
Primary antibody说明	Liver X Receptors (LXRs) are oxysterol activated nuclear receptors which are involved in the regulation of genesis and metabolism of cholesterol and bile acids. LXRs form heterodimeric complexes with the retinoic acid receptors (RARs) once activated by their respective oxysterol ligands. Two known isoforms, alpha and beta, are differentially expressed; the alpha isoform predominantly expressed in liver, whereas beta isoform expression has been shown to be ubiquitous.
克隆	多克隆
同种型	IgG

应用

The Abpromise guarantee **Abpromise™**承诺保证使用ab3585于以下的经测试应用

“应用说明”部分 下显示的仅为推荐的起始稀释度;实际最佳的稀释度/浓度应由使用者检定。

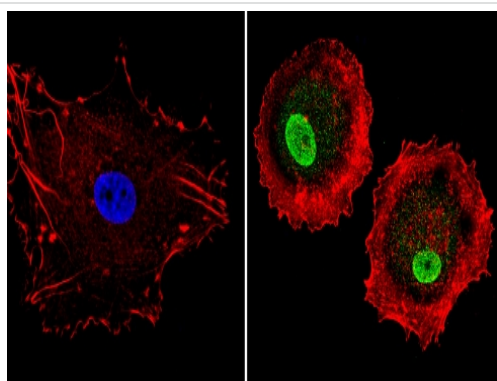
应用	Ab评论	说明
ICC		1/50 - 1/500.
EMSA		Use at an assay dependent concentration.
Gel Shift Assay		Use at an assay dependent concentration.
IHC-FoFr		Use at an assay dependent concentration. PubMed: 22836489
ICC/IF	★★★★☆ (2)	Use at an assay dependent concentration.

应用说明 Is unsuitable for WB.

靶标

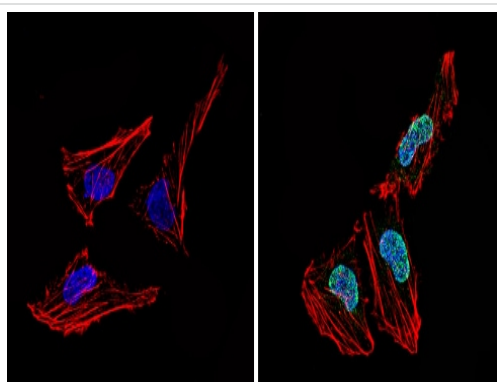
功能	Orphan receptor. Interaction with RXR shifts RXR from its role as a silent DNA-binding partner to an active ligand-binding subunit in mediating retinoid responses through target genes defined by LXRES. LXRES are DR4-type response elements characterized by direct repeats of two similar hexanucleotide half-sites spaced by four nucleotides. Plays an important role in the regulation of cholesterol homeostasis, regulating cholesterol uptake through MYLIP-dependent ubiquitination of LDLR, VLDLR and LRP8.
组织特异性	Visceral organs specific expression. Strong expression was found in liver, kidney and intestine followed by spleen and to a lesser extent the adrenals.
序列相似性	Belongs to the nuclear hormone receptor family. NR1 subfamily. Contains 1 nuclear receptor DNA-binding domain.
细胞定位	Nucleus.

图片



Immunocytochemistry - Anti-LXR alpha antibody
(ab3585)

Immunocytochemistry/Immunofluorescence analysis of MCF-7 cells labeling LXR alpha (green) with ab3585 at 1/300. F-Actin staining with Phalloidin (red) and nuclei with DAPI or Hoechst (blue). Cells were fixed with formalin, permeabilized with 0.1% Triton X-100 in TBS for 5-10 minutes and blocked with 3% BSA in PBS for 30 minutes at room temperature. Cells were incubated with the primary antibody overnight at 4°C. A DyLight-conjugated secondary antibody was used. 60X magnification. Left - negative control.



Immunocytochemistry - Anti-LXR alpha antibody
(ab3585)

Immunocytochemistry/Immunofluorescence analysis of HeLa cells labeling LXR alpha (green) with ab3585 at 1/300. F-Actin staining with Phalloidin (red) and nuclei with DAPI or Hoechst (blue). Cells were fixed with formalin, permeabilized with 0.1% Triton X-100 in TBS for 5-10 minutes and blocked with 3% BSA in PBS for 30 minutes at room temperature. Cells were incubated with the primary antibody overnight at 4°C. A DyLight-conjugated secondary antibody was used. 60X magnification. Left - negative control.

Please note: All products are "FOR RESEARCH USE ONLY. NOT FOR USE IN DIAGNOSTIC PROCEDURES"

Our Abpromise to you: Quality guaranteed and expert technical support

- Replacement or refund for products not performing as stated on the datasheet
- Valid for 12 months from date of delivery
- Response to your inquiry within 24 hours
- We provide support in Chinese, English, French, German, Japanese and Spanish
- Extensive multi-media technical resources to help you
- We investigate all quality concerns to ensure our products perform to the highest standards

If the product does not perform as described on this datasheet, we will offer a refund or replacement. For full details of the Abpromise, please visit <https://www.abcam.cn/abpromise> or contact our technical team.

Terms and conditions

- Guarantee only valid for products bought direct from Abcam or one of our authorized distributors