

Anti-Luteinizing Hormone beta antibody ab189339

1 图像

概述

产品名称	Anti-Luteinizing Hormone beta 抗体
描述	羊多克隆抗体 to Luteinizing Hormone beta
宿主	Sheep
特异性	TSH 20%; hCG6%; FSH6%; Prolactin hPL.
经测试应用	适用于: IHC-P
种属反应性	与反应: Human
免疫原	Full length native protein (purified) corresponding to Human Luteinizing Hormone beta. Highly purified human pituitary luteinizing hormone. Database link: P01229
	Run BLAST with Run BLAST with
阳性对照	Human placenta tissue.
常规说明	<p>The Life Science industry has been in the grips of a reproducibility crisis for a number of years. Abcam is leading the way in addressing this with our range of recombinant monoclonal antibodies and knockout edited cell lines for gold-standard validation. Please check that this product meets your needs before purchasing.</p> <p>If you have any questions, special requirements or concerns, please send us an inquiry and/or contact our Support team ahead of purchase. Recommended alternatives for this product can be found below, along with publications, customer reviews and Q&As</p>

性能

形式	Liquid
存放说明	Shipped at 4°C. Store at +4°C short term (1-2 weeks). Upon delivery aliquot. Store at -20°C long term. Avoid freeze / thaw cycle.
存储溶液	Preservative: 0.09% Sodium azide Constituent: 99% PBS
纯度	Protein G purified
克隆	多克隆
同种型	IgG

应用

The Abpromise guarantee

Abpromise™ 承诺保证使用 ab189339 于以下的经测试应用

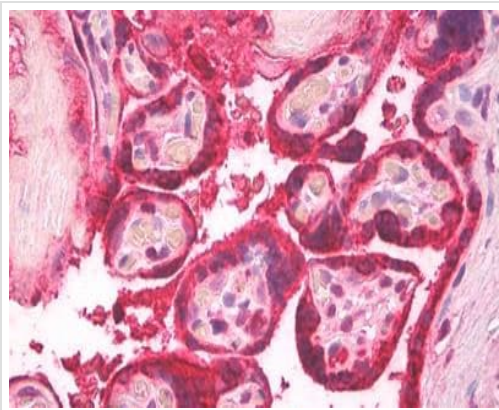
“应用说明”部分 下显示的仅为推荐的起始稀释度;实际最佳的稀释度/浓度应由使用者检定。

应用	Ab评论	说明
IHC-P		Use a concentration of 2.5 µg/ml. Perform heat mediated antigen retrieval before commencing with IHC staining protocol.

靶标

功能	Promotes spermatogenesis and ovulation by stimulating the testes and ovaries to synthesize steroids.
组织特异性	Pituitary gland.
疾病相关	Defects in LHB are a cause of hypogonadism LHB-related (HGON-LHB) [MIM:152780]. Hypogonadism is characterized by infertility and pseudohermaphroditism.
序列相似性	Belongs to the glycoprotein hormones subunit beta family.
细胞定位	Secreted.

图片



Immunohistochemical analysis of formalin fixed paraffin embedded human placenta labeling Luteinizing Hormone beta with ab189339 at 2.5 µg/ml

Immunohistochemistry (Formalin/PFA-fixed paraffin-embedded sections) - Anti-Luteinizing Hormone beta antibody (ab189339)

Please note: All products are "FOR RESEARCH USE ONLY. NOT FOR USE IN DIAGNOSTIC PROCEDURES"

Our Abpromise to you: Quality guaranteed and expert technical support

- Replacement or refund for products not performing as stated on the datasheet
- Valid for 12 months from date of delivery
- Response to your inquiry within 24 hours

- We provide support in Chinese, English, French, German, Japanese and Spanish
- Extensive multi-media technical resources to help you
- We investigate all quality concerns to ensure our products perform to the highest standards

If the product does not perform as described on this datasheet, we will offer a refund or replacement. For full details of the Abpromise, please visit <https://www.abcam.cn/abpromise> or contact our technical team.

Terms and conditions

- Guarantee only valid for products bought direct from Abcam or one of our authorized distributors