

### Anti-Lumican antibody [EPR8898(2)] ab168348

**重组** RabMAb

★★★★★ **14 Abreviews** **30 References** **6 图像**

#### 概述

产品名称	Anti-Lumican抗体[EPR8898(2)]
描述	兔单克隆抗体[EPR8898(2)] to Lumican
宿主	Rabbit
经测试应用	<b>适用于:</b> Flow Cyt (Intra), WB, IHC-P, ICC/IF <b>不适用于:</b> IP
种属反应性	<b>与反应:</b> Human <b>预测可用于:</b> Mouse, Rat 
免疫原	Synthetic peptide within Human Lumican aa 250-350. The exact sequence is proprietary. Database link: <b>P51884</b>
阳性对照	WB: Saos-2, fetal skin, fetal heart, Jurkat, Y79 and HEK-293T lysates. IHC-P: Human kidney and Human skin tissues. ICC/IF: Saos-2 cells. Flow Cyt (intra): HEK-293T cells
常规说明	This product is a recombinant monoclonal antibody, which offers several advantages including: <ul style="list-style-type: none"> <li>- High batch-to-batch consistency and reproducibility</li> <li>- Improved sensitivity and specificity</li> <li>- Long-term security of supply</li> <li>- Animal-free production</li> </ul> For more information <b><a href="#">see here</a></b> . Our RabMAb <sup>®</sup> technology is a patented hybridoma-based technology for making rabbit monoclonal antibodies. For details on our patents, please refer to <b><a href="#">RabMAb<sup>®</sup> patents</a></b> .

#### 性能

形式	Liquid
存放说明	Shipped at 4°C. Store at +4°C short term (1-2 weeks). Upon delivery aliquot. Store at -20°C long term. Avoid freeze / thaw cycle.
存储溶液	pH: 7.2 Preservative: 0.01% Sodium azide Constituents: 59% PBS, 40% Glycerol (glycerin, glycerine), 0.5% BSA
纯度	Protein A purified
克隆	单克隆

克隆编号	EPR8898(2)
同种型	IgG

## 应用

**The Abpromise guarantee**      **Abpromise™承诺保证使用ab168348于以下的经测试应用**

“应用说明”部分下显示的仅为推荐的起始稀释度；实际最佳的稀释度/浓度应由使用者检定。

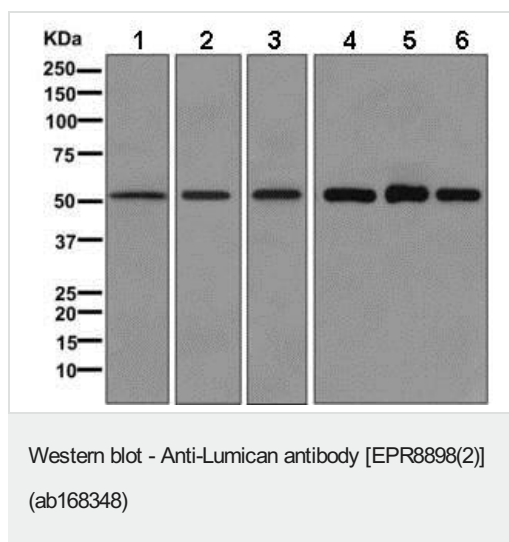
应用	Ab评论	说明
Flow Cyt (Intra)		1/100 - 1/500. <b>ab172730</b> - Rabbit monoclonal IgG, is suitable for use as an isotype control with this antibody.
WB		1/1000 - 1/5000. Detects a band of approximately 50 kDa (predicted molecular weight: 38 kDa).
IHC-P	★★★★★ (6)	1/50 - 1/100. Perform heat mediated antigen retrieval with citrate buffer pH 6 before commencing with IHC staining protocol.
ICC/IF	★★★★★ (3)	1/250 - 1/500.

**应用说明** Is unsuitable for IP.

靶标

组织特异性	Cornea and other tissues.
序列相似性	Belongs to the small leucine-rich proteoglycan (SLRP) family. SLRP class II subfamily. Contains 11 LRR (leucine-rich) repeats. Contains 1 LRRNT domain.
发展阶段	Present in the extracellular matrix of human articular cartilage at all ages, although its abundance is far greater in the adult. In the adult cartilage lumican exists predominantly in a glycoprotein form lacking keratan sulfate, whereas the juvenile form of the molecule is a proteoglycan.
翻译后修饰	Sulfated on tyrosine residue(s).
细胞定位	Secreted > extracellular space > extracellular matrix.

图片



**All lanes :** Anti-Lumican antibody [EPR8898(2)] (ab168348) at 1/1000 dilution

**Lane 1 :** Saos-2 lysate

**Lane 2 :** Fetal skin lysate

**Lane 3 :** Fetal heart lysate

**Lane 4 :** Jurkat lysate

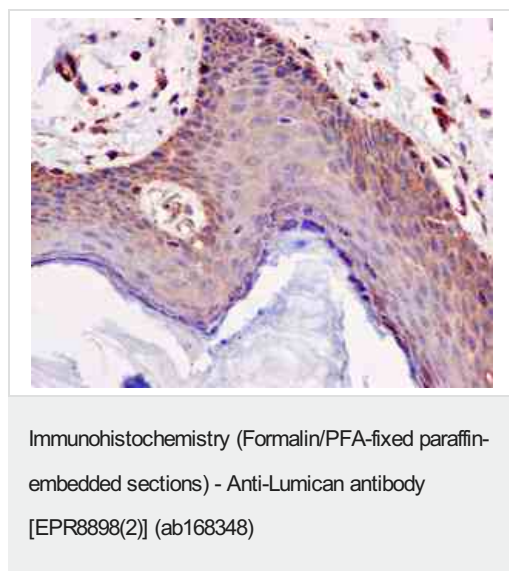
**Lane 5 :** Y79 lysate

**Lane 6 :** 293T lysate

Lysates/proteins at 10 µg per lane.

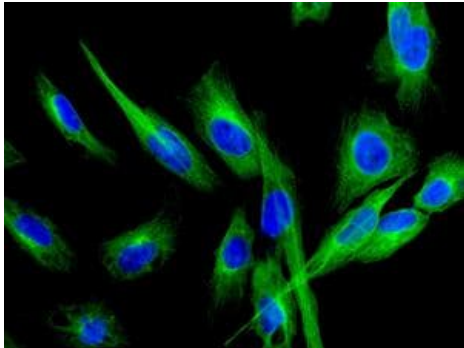
**Predicted band size:** 38 kDa

**Additional bands at:** 50 kDa. We are unsure as to the identity of these extra bands.



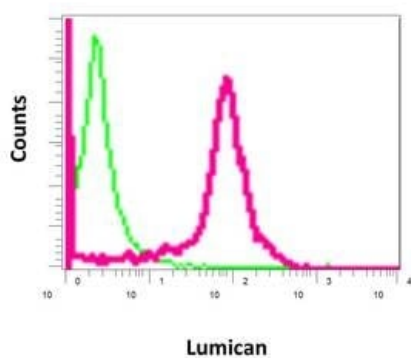
Immunohistochemical analysis of paraffin embedded Human skin tissue labeling Lumican with ab168348 at 1/50.

Perform heat mediated antigen retrieval with citrate buffer pH 6 before commencing with IHC staining protocol.



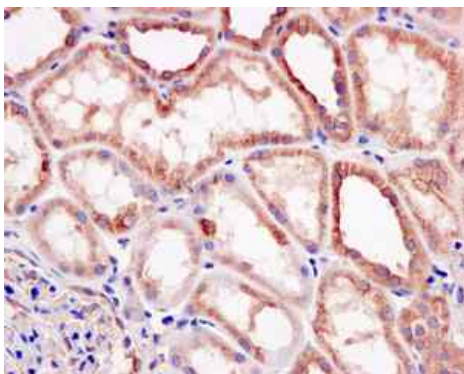
Immunofluorescent analysis of Saos-2 cells labeling Lumican with ab168348 at 1/250.

Immunocytochemistry/ Immunofluorescence - Anti-Lumican antibody [EPR8898(2)] (ab168348)



Intracellular flow cytometrical analysis of permeabilized 293T cells with ab168348 antibody at a dilution of 1/100 (red) or a rabbit IgG (negative) (green).

Flow Cytometry (Intracellular) - Anti-Lumican antibody [EPR8898(2)] (ab168348)



Immunohistochemical analysis of paraffin embedded Human kidney tissue labeling Lumican with ab168348 at 1/50.

Perform heat mediated antigen retrieval with citrate buffer pH 6 before commencing with IHC staining protocol.

Immunohistochemistry (Formalin/PFA-fixed paraffin-embedded sections) - Anti-Lumican antibody [EPR8898(2)] (ab168348)

### Why choose a recombinant antibody?



**Research with confidence**  
Consistent and reproducible results



**Long-term and scalable supply**  
Recombinant technology



**Success from the first experiment**  
Confirmed specificity



**Ethical standards compliant**  
Animal-free production

Anti-Lumican antibody [EPR8898(2)] (ab168348)

**Please note:** All products are "FOR RESEARCH USE ONLY. NOT FOR USE IN DIAGNOSTIC PROCEDURES"

### Our Abpromise to you: Quality guaranteed and expert technical support

---

- Replacement or refund for products not performing as stated on the datasheet
- Valid for 12 months from date of delivery
- Response to your inquiry within 24 hours
- We provide support in Chinese, English, French, German, Japanese and Spanish
- Extensive multi-media technical resources to help you
- We investigate all quality concerns to ensure our products perform to the highest standards

If the product does not perform as described on this datasheet, we will offer a refund or replacement. For full details of the Abpromise, please visit <https://www.abcam.cn/abpromise> or contact our technical team.

### Terms and conditions

---

- Guarantee only valid for products bought direct from Abcam or one of our authorized distributors