

Anti-LTBP4 antibody ab222844

[1 References](#) [2 图像](#)

概述

产品名称	Anti-LTBP4抗体
描述	兔多克隆抗体to LTBP4
宿主	Rabbit
经测试应用	适用于: ICC/IF, IHC-P
种属反应性	与反应: Human
免疫原	Recombinant fragment corresponding to Human LTBP4 aa 977-1180. Database link: Q8N2S1
阳性对照	IHC-P: Human kidney tissue. ICC/IF: HepG2 cells.
常规说明	<p>The Life Science industry has been in the grips of a reproducibility crisis for a number of years. Abcam is leading the way in addressing this with our range of recombinant monoclonal antibodies and knockout edited cell lines for gold-standard validation. Please check that this product meets your needs before purchasing.</p> <p>If you have any questions, special requirements or concerns, please send us an inquiry and/or contact our Support team ahead of purchase. Recommended alternatives for this product can be found below, along with publications, customer reviews and Q&As</p>

性能

形式	Liquid
存放说明	Shipped at 4°C. Store at +4°C short term (1-2 weeks). Upon delivery aliquot. Store at -20°C long term. Avoid freeze / thaw cycle.
存储溶液	pH: 7.40 Preservative: 0.03% Proclin 300 Constituents: 50% Glycerol (glycerin, glycerine), PBS
纯度	Protein G purified
纯化说明	Purity >95%
克隆	多克隆
同种型	IgG

应用

The Abpromise guarantee **Abpromise™**承诺保证使用ab222844于以下的经测试应用

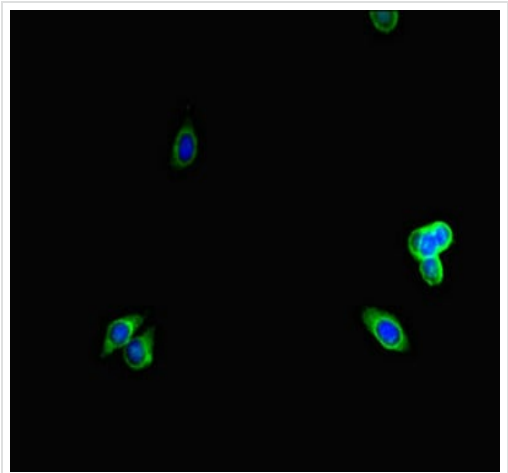
“应用说明”部分 下显示的仅为推荐的起始稀释度;实际最佳的稀释度/浓度应由使用者检定。

应用	Ab评论	说明
ICC/IF		1/50 - 1/200.
IHC-P		1/20 - 1/200.

靶标

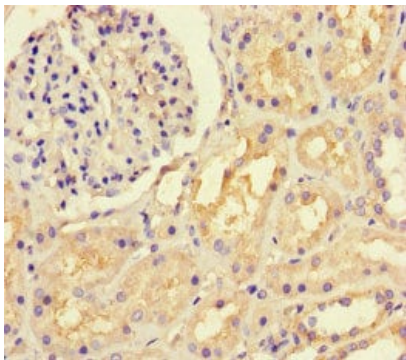
功能	May be involved in the assembly, secretion and targeting of TGFB1 to sites at which it is stored and/or activated. May play critical roles in controlling and directing the activity of TGFB1. May have a structural role in the extra cellular matrix (ECM).
组织特异性	Highly expressed in heart, skeletal muscle, pancreas, uterus, and small intestine. Weakly expressed in placenta and lung.
疾病相关	Urban-Rifkin-Davis syndrome
序列相似性	Belongs to the LTBP family. Contains 16 EGF-like domains. Contains 4 TB (TGF-beta binding) domains.
发展阶段	Very low expression in fetal brain, liver, heart, spleen and thymus.
翻译后修饰	Contains hydroxylated asparagine residues.
细胞定位	Secreted, extracellular space, extracellular matrix.

图片



Immunocytochemistry/ Immunofluorescence - Anti-LTBP4 antibody (ab222844)

HepG2 (human liver hepatocellular carcinoma cell line) cells stained for LTBP4 (green) using ab222844 at 1/100 dilution in ICC/IF. Alexa Fluor 488-conjugated Goat Anti-Rabbit IgG (H+L) was used as secondary antibody.



Paraffin-embedded human kidney tissue stained for LTBP4 using ab222844 at 1/100 dilution in immunohistochemical analysis.

Immunohistochemistry (Formalin/PFA-fixed paraffin-embedded sections) - Anti-LTBP4 antibody (ab222844)

Please note: All products are "FOR RESEARCH USE ONLY. NOT FOR USE IN DIAGNOSTIC PROCEDURES"

Our Abpromise to you: Quality guaranteed and expert technical support

- Replacement or refund for products not performing as stated on the datasheet
- Valid for 12 months from date of delivery
- Response to your inquiry within 24 hours
- We provide support in Chinese, English, French, German, Japanese and Spanish
- Extensive multi-media technical resources to help you
- We investigate all quality concerns to ensure our products perform to the highest standards

If the product does not perform as described on this datasheet, we will offer a refund or replacement. For full details of the Abpromise, please visit <https://www.abcam.cn/abpromise> or contact our technical team.

Terms and conditions

- Guarantee only valid for products bought direct from Abcam or one of our authorized distributors