

Anti-LSS antibody [EPR6703] ab140124

重组 RabMAb

1 References 4 图像

概述	
产品名称	Anti-LSS抗体[EPR6703]
描述	兔单克隆抗体[EPR6703] to LSS
宿主	Rabbit
经测试应用	适用于: WB, IHC-P 不适用于: ICC/IF or IP
种属反应性	与反应: Human
免疫原	Synthetic peptide within Human LSS (N terminal). The exact sequence is proprietary.
阳性对照	HeLa and Human fetal liver lysates; Human kidney and placenta tissues.
常规说明	<p>This product is a recombinant monoclonal antibody, which offers several advantages including:</p> <ul style="list-style-type: none"><li>- High batch-to-batch consistency and reproducibility</li><li>- Improved sensitivity and specificity</li><li>- Long-term security of supply</li><li>- Animal-free production</li></ul> <p>For more information <a href="#">see here</a>.</p> <p>Our RabMAb<sup>®</sup> technology is a patented hybridoma-based technology for making rabbit monoclonal antibodies. For details on our patents, please refer to <a href="#">RabMAb<sup>®</sup> patents</a>.</p> <p>Mouse, Rat: We have preliminary internal testing data to indicate this antibody may not react with these species. Please contact us for more information.</p>
性能	
形式	Liquid
存放说明	Shipped at 4°C. Store at -20°C.
存储溶液	pH: 7.2 Preservative: 0.01% Sodium azide Constituents: 9% PBS, 40% Glycerol (glycerin, glycerine), 0.05% BSA, 50% Tissue culture supernatant
纯度	Protein A purified
克隆	单克隆

克隆编号EPR6703

同种型IgG

应用

The Abpromise guarantee **Abpromise™**承诺保证使用ab140124于以下的经测试应用

“应用说明”部分 下显示的仅为推荐的起始稀释度;实际最佳的稀释度/浓度应由使用者检定。

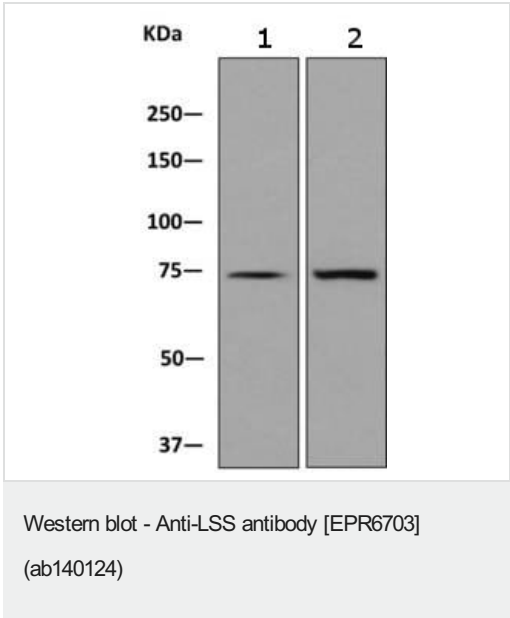
应用	Ab评论	说明
WB		1/1000 - 1/10000. Detects a band of approximately 83 kDa.
IHC-P		1/100 - 1/250. Perform heat mediated antigen retrieval before commencing with IHC staining protocol.

应用说明Is unsuitable for ICC/IF or IP.

靶标

相关性Catalyzes the cyclization of (S)-2,3 oxidosqualene to lanosterol, a reaction that forms the sterol nucleus.

图片

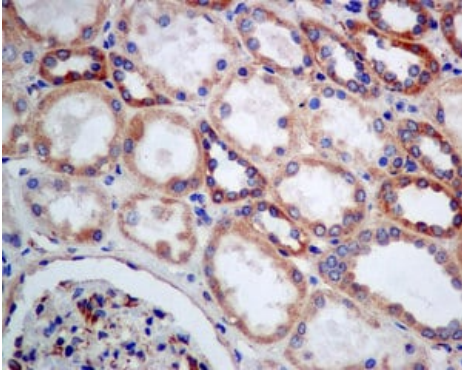


**All lanes :** Anti-LSS antibody [EPR6703] (ab140124) at 1/1000 dilution

**Lane 1 :** HeLa cell lysate  
**Lane 2 :** Human fetal liver lysate

Lysates/proteins at 10 µg per lane.

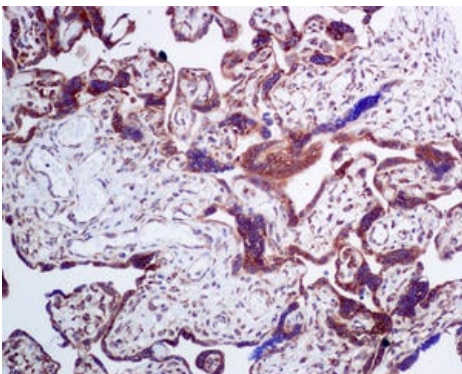
**Secondary**  
**All lanes :** goat anti-rabbit HRP at 1/2000 dilution



Immunohistochemistry (Formalin/PFA-fixed paraffin-embedded sections) - Anti-LSS antibody [EPR6703] (ab140124)

Immunohistochemical analysis of paraffin-embedded Human kidney tissue labelling LSS with ab140124 at 1/100 dilution.

Perform heat mediated antigen retrieval before commencing with IHC staining protocol.



Immunohistochemistry (Formalin/PFA-fixed paraffin-embedded sections) - Anti-LSS antibody [EPR6703] (ab140124)

Immunohistochemical analysis of paraffin-embedded Human placenta tissue labelling LSS with ab140124 at 1/100 dilution.

Perform heat mediated antigen retrieval before commencing with IHC staining protocol.

### Why choose a recombinant antibody?



**Research with confidence**  
Consistent and reproducible results



**Long-term and scalable supply**  
Recombinant technology



**Success from the first experiment**  
Confirmed specificity



**Ethical standards compliant**  
Animal-free production

Anti-LSS antibody [EPR6703] (ab140124)

**Please note:** All products are "FOR RESEARCH USE ONLY. NOT FOR USE IN DIAGNOSTIC PROCEDURES"

### Our Abpromise to you: Quality guaranteed and expert technical support

---

- Replacement or refund for products not performing as stated on the datasheet
- Valid for 12 months from date of delivery
- Response to your inquiry within 24 hours
- We provide support in Chinese, English, French, German, Japanese and Spanish
- Extensive multi-media technical resources to help you
- We investigate all quality concerns to ensure our products perform to the highest standards

If the product does not perform as described on this datasheet, we will offer a refund or replacement. For full details of the Abpromise, please visit <https://www.abcam.cn/abpromise> or contact our technical team.

### Terms and conditions

---

- Guarantee only valid for products bought direct from Abcam or one of our authorized distributors